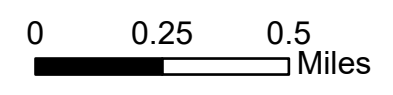


125°21.5'W 125°21.01'W 125°20.5'W 125°20'W 125°19.5'W 125°19'W 125°18.5'W 125°18'W 125°17.5'W 125°17'W 125°16.5'W 125°16'W 125°15.5'W 125°15'W

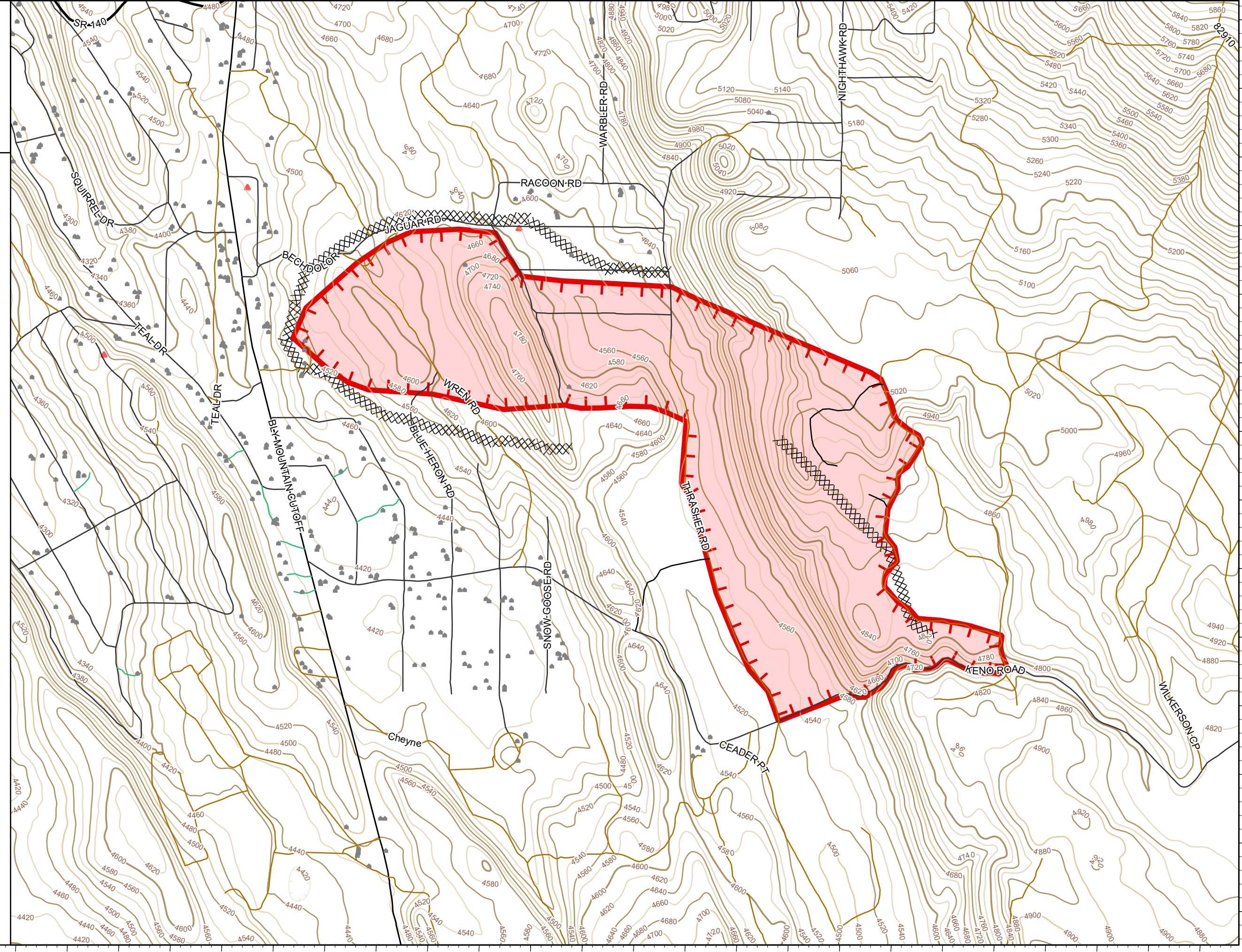
41°40'N
41°39.5'N
41°38.99'N
41°38.5'N
41°38'N
41°37.5'N
41°37'N

41°40.5'N
41°40'N
41°39.5'N
41°38.99'N
41°38.5'N
41°38'N
41°37.5'N
41°37'N

IAP
Cutoff
OR981S210215
06/20/2021 In Brief
approx. 1259 acres at 6/20/2021



- Structures
- Oregon Roads**
 - Federal or State highway
 - Paved
 - All weather
 - Dirt
 - 4wd trail
 - Stub/driveway, less than 200ft
 - Contour 200
 - Contour 100
 - Contour 40
 - Contour 20
 - Depression 20
 - Completed Dozer Line
 - Fire Edge
 - Wildfire Daily Fire Perimeter



06/20/2021 1100
Acres from IR and GPS
North American 1983 Datum.



125°21.5'W 125°21.01'W 125°20.5'W 125°20'W 125°19.5'W 125°19'W 125°18.5'W 125°18'W 125°17.5'W 125°17'W 125°16.5'W 125°16'W 125°15.5'W 125°15'W