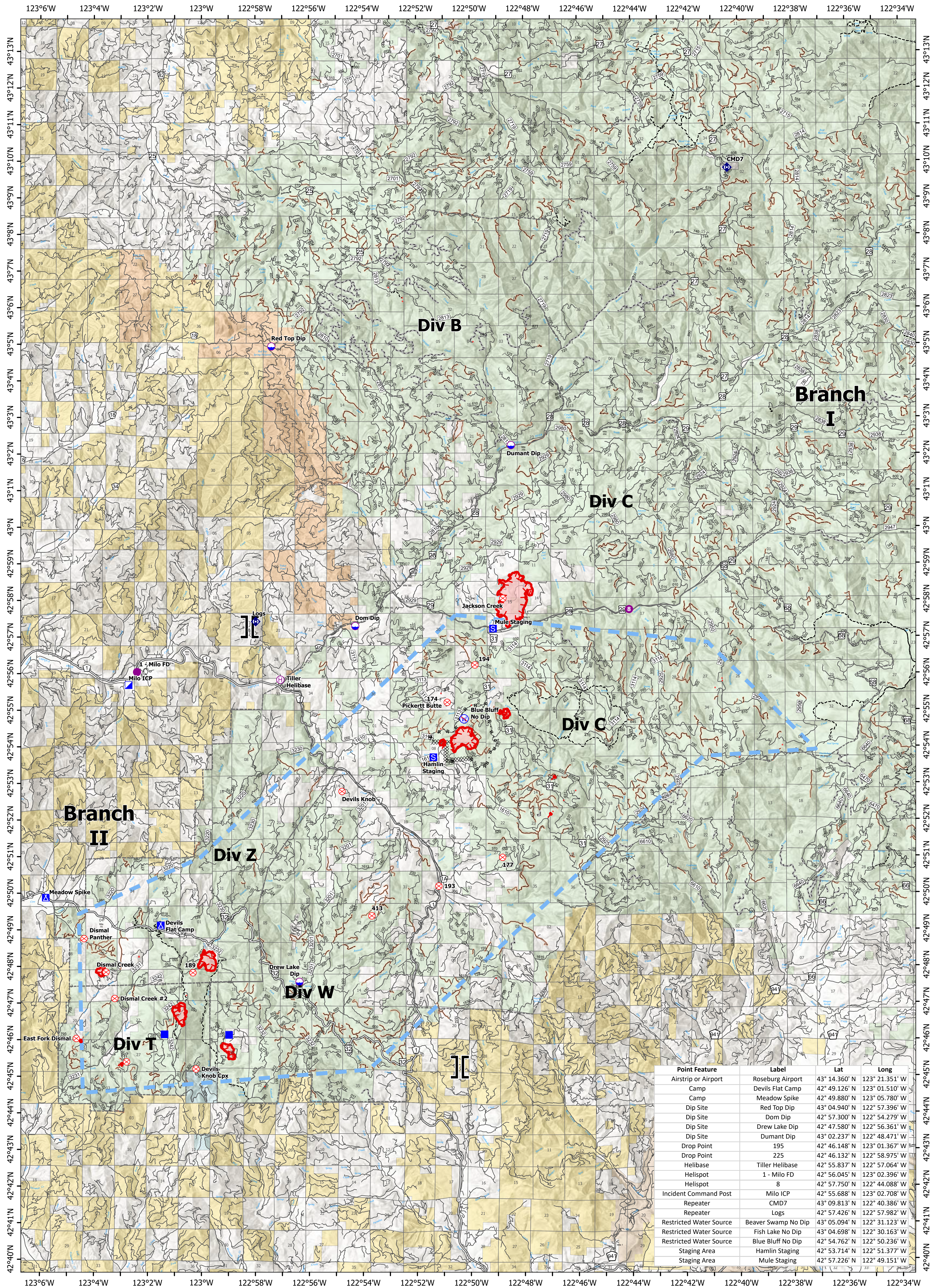


Commo



Devil's Knob Complex

OR-UPF-000450

1,414 ac. as of 08-05-21 @ 2041

- Dip Site
- Drop Point
- ⊗ Restricted Water Source
- ▬ Fire Edge
- ▬ Decom_FS_Roads
- Bureau of Indian Affairs
- Helispot
- ⊠ Camp
- ⊠ Completed Dozer Line
- ▬ Major_Roads
- ▬ BLM_Roads
- Helibase
- ⊠ Staging Area
- ▬ Open FS Roads
- ▬ Trails
- Branch Break
- ⊠ Fire Origin
- ▬ Closed FS Roads
- ▬ Bureau of Land Management
- ▬ State
- Incident Command Post
- ⊠ Repeater
- ▬ Other
- ▬ Private/Unknown
- ▬ Temporary Flight Restriction
- ▬ Other Roads
- ▬ U.S. Forest Service
- ▬ Tiller Ranger District



Map Updated: 8/7/2021 @ 0000



0 1 2 4 Miles