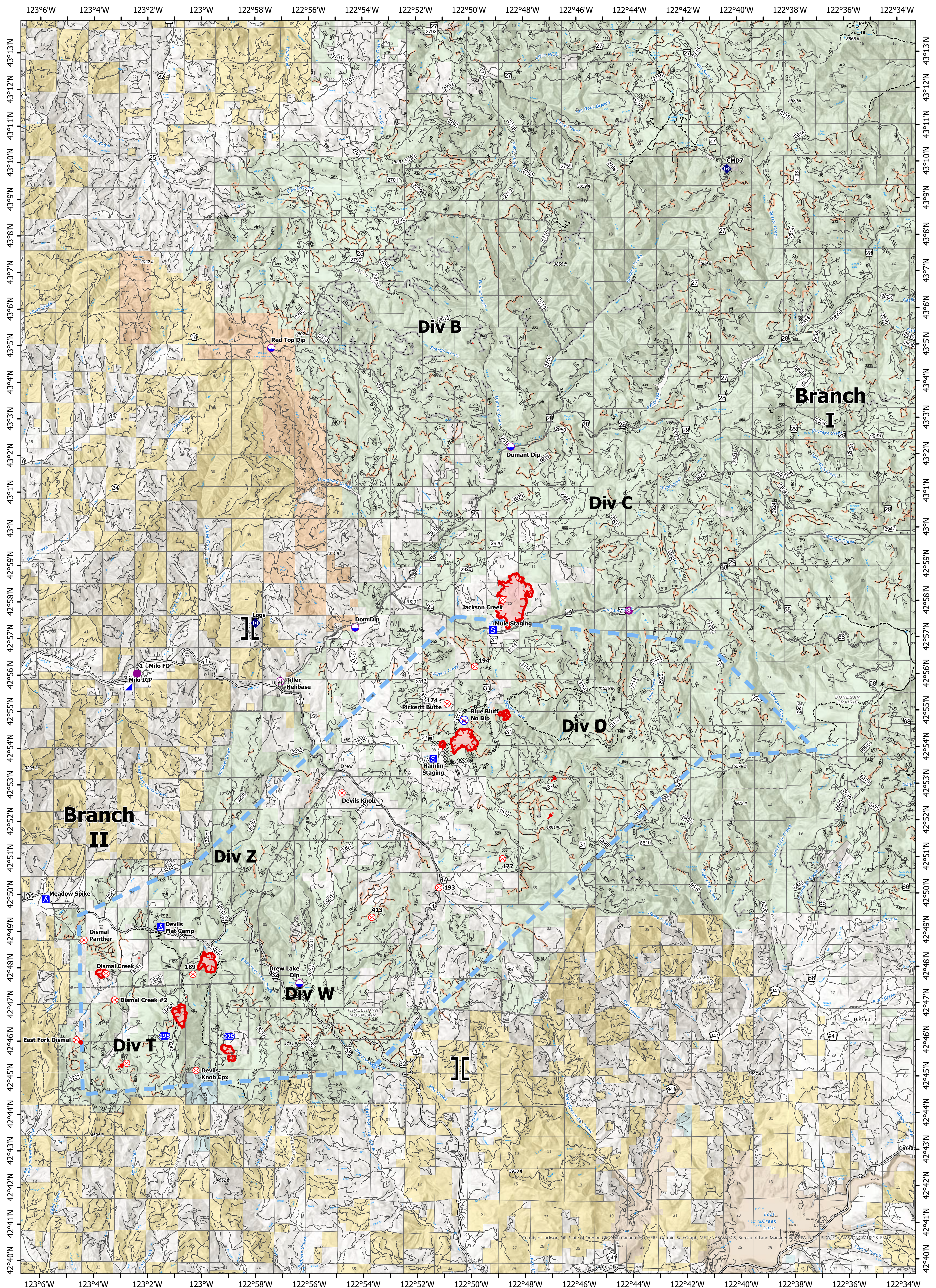


Operations



Devil's Knob Complex

OR-UPF-000450

1,414 ac. as of 08-05-21 @ 2041

- | | | | | | |
|-------------------------|----------------|--------------------------------|-------------------|-----------------------------|----------------------------|
| ● Dip Site | ■ Drop Point | ⊗ Restricted Water Source | ▬ Fire Edge | ▬ Decom_FS_Roads | ■ Bureau of Indian Affairs |
| ● Helispot | ⊠ Camp | ⊗ Completed Dozer Line | ▬ Major_Roads | ▬ BLM_Roads | ■ Other Federal |
| ● Helibase | ⊠ Staging Area | ▬ Completed Road as Line | ▬ Open FS Roads | ▬ Trails | ■ State |
| II Branch Break | ⊠ Fire Origin | ▬ Other | ▬ Closed FS Roads | ▬ Bureau of Land Management | ■ Private/Unknown |
| ⊠ Incident Command Post | ⊠ Repeater | ▬ Temporary Flight Restriction | ▬ Other Roads | ▬ U.S. Forest Service | ■ Tiller Ranger District |



Map Updated: 8/7/2021 @ 0005

