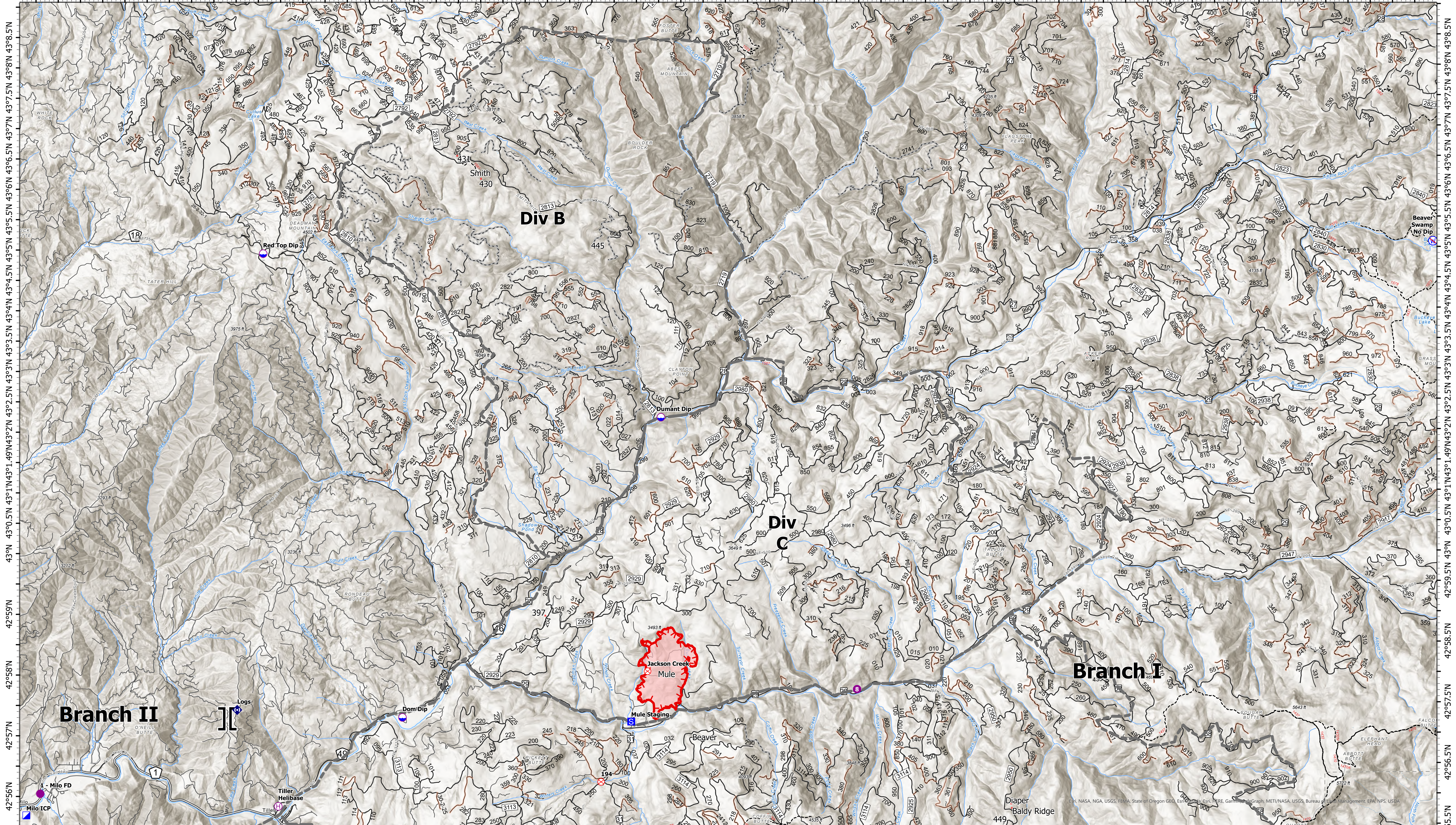


# Transportation, North

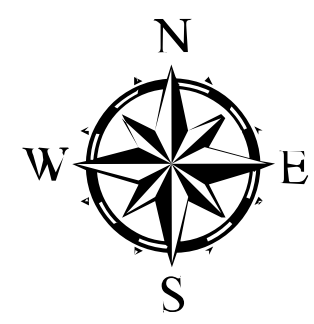
123°2.5'W 123°1.5'W 123°0.5'W 122°59.5'W 122°58.5'W 122°57.5'W 122°56.5'W 122°55.5'W 122°54.5'W 122°53.5'W 122°52.5'W 122°51.5'W 122°50.5'W 122°49.5'W 122°48.5'W 122°47.5'W 122°46.5'W 122°45.5'W 122°44.5'W 122°43.5'W 122°42.5'W 122°41.5'W 122°40.5'W 122°39.5'W 122°38.5'W 122°37.5'W 122°36.5'W 122°35.5'W 122°34.5'W 122°33.5'W 122°32.5'W 122°31.5'W



## Devil's Knob Complex

OR-UPF-000450  
 Fire Perimeter Acres as of 2021-08-05 @ 2041  
 Total Acres: 1,414

Map Updated: 8/6/2021 @ 2303



- Dip Site
- Helispot
- ⊕ Helibase
- ⊓ Branch Break
- Incident Command Post
- Staging Area
- ⊗ Fire Origin
- ◆ Repeater
- ⊕ Restricted Water Source
- Major Roads
- BLM Roads
- Open FS Roads
- Closed FS Roads
- Other Roads
- Decommissioned FS Roads
- Trails
- Streams



0 0.5 1 2 Miles