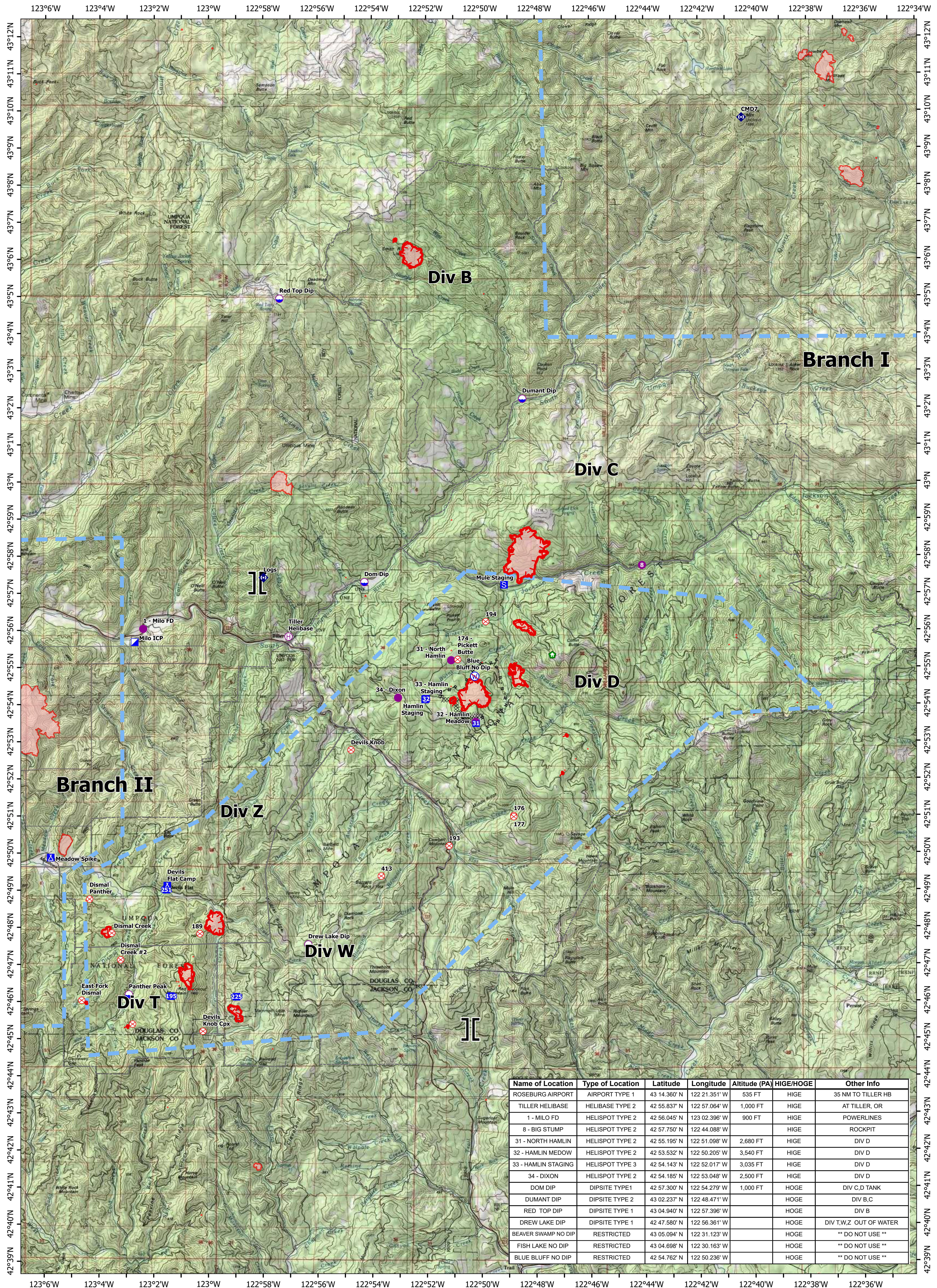


# Air Operations



Name of Location	Type of Location	Latitude	Longitude	Altitude (PA)	HIGE/HOGE	Other Info
ROSEBURG AIRPORT	AIRPORT TYPE 1	43 14.360' N	122 21.351' W	535 FT	HIGE	35 NM TO TILLER HB
TILLER HELIBASE	HELIBASE TYPE 2	42 55.837' N	122 57.064' W	1,000 FT	HIGE	AT TILLER, OR
1 - MILO FD	HELISPOT TYPE 2	42 56.045' N	123 02.396' W	900 FT	HIGE	POWERLINES
8 - BIG STUMP	HELISPOT TYPE 2	42 57.750' N	122 44.088' W		HIGE	ROCKPIT
31 - NORTH HAMLIN	HELISPOT TYPE 2	42 55.195' N	122 51.098' W	2,680 FT	HIGE	DIV D
32 - HAMLIN MEDOW	HELISPOT TYPE 2	42 53.532' N	122 50.205' W	3,540 FT	HIGE	DIV D
33 - HAMLIN STAGING	HELISPOT TYPE 3	42 54.143' N	122 52.017' W	3,035 FT	HIGE	DIV D
34 - DIXON	HELISPOT TYPE 2	42 54.185' N	122 53.048' W	2,500 FT	HIGE	DIV D
DOM DIP	DIPSITE TYPE 1	42 57.300' N	122 54.279' W	1,000 FT	HOGE	DIV C,D TANK
DUMANT DIP	DIPSITE TYPE 2	43 02.237' N	122 48.471' W		HOGE	DIV B,C
RED TOP DIP	DIPSITE TYPE 1	43 04.940' N	122 57.396' W		HOGE	DIV B
DREW LAKE DIP	DIPSITE TYPE 1	42 47.580' N	122 56.361' W		HOGE	DIV T,W,Z OUT OF WATER
BEAVER SWAMP NO DIP	RESTRICTED	43 05.094' N	122 31.123' W		HOGE	** DO NOT USE **
FISH LAKE NO DIP	RESTRICTED	43 04.698' N	122 30.163' W		HOGE	** DO NOT USE **
BLUE BLUFF NO DIP	RESTRICTED	42 54.762' N	122 50.236' W		HOGE	** DO NOT USE **

## Devil's Knob Complex

OR-UPF-000450  
2,041ac. as of 08-06-21 @ 0110



- Helispot
- Ⓧ Camp
- Ⓜ Staging Area
- Ⓜ Helibase
- Ⓧ Fire Origin
- Ⓜ Structure Wrap
- Ⓜ Repeater
- Ⓜ Restricted Water Source
- Ⓜ Drop Point
- Ⓜ Completed Mixed Construction Line
- Ⓜ Completed Road as Line
- Ⓜ Other
- Ⓜ Temporary Flight Restriction
- Ⓜ Fire Edge
- Ⓜ Other
- Ⓜ Wildfire Daily Fire Perimeter
- Ⓜ Completed Dozer Line

