

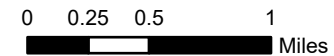
**Branch I**

**Div B**

**Smith**










**Red Top Dip**

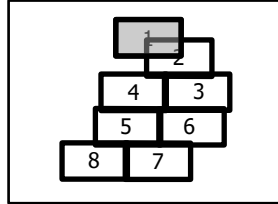
**Devil's Knob Complex IAP Map**

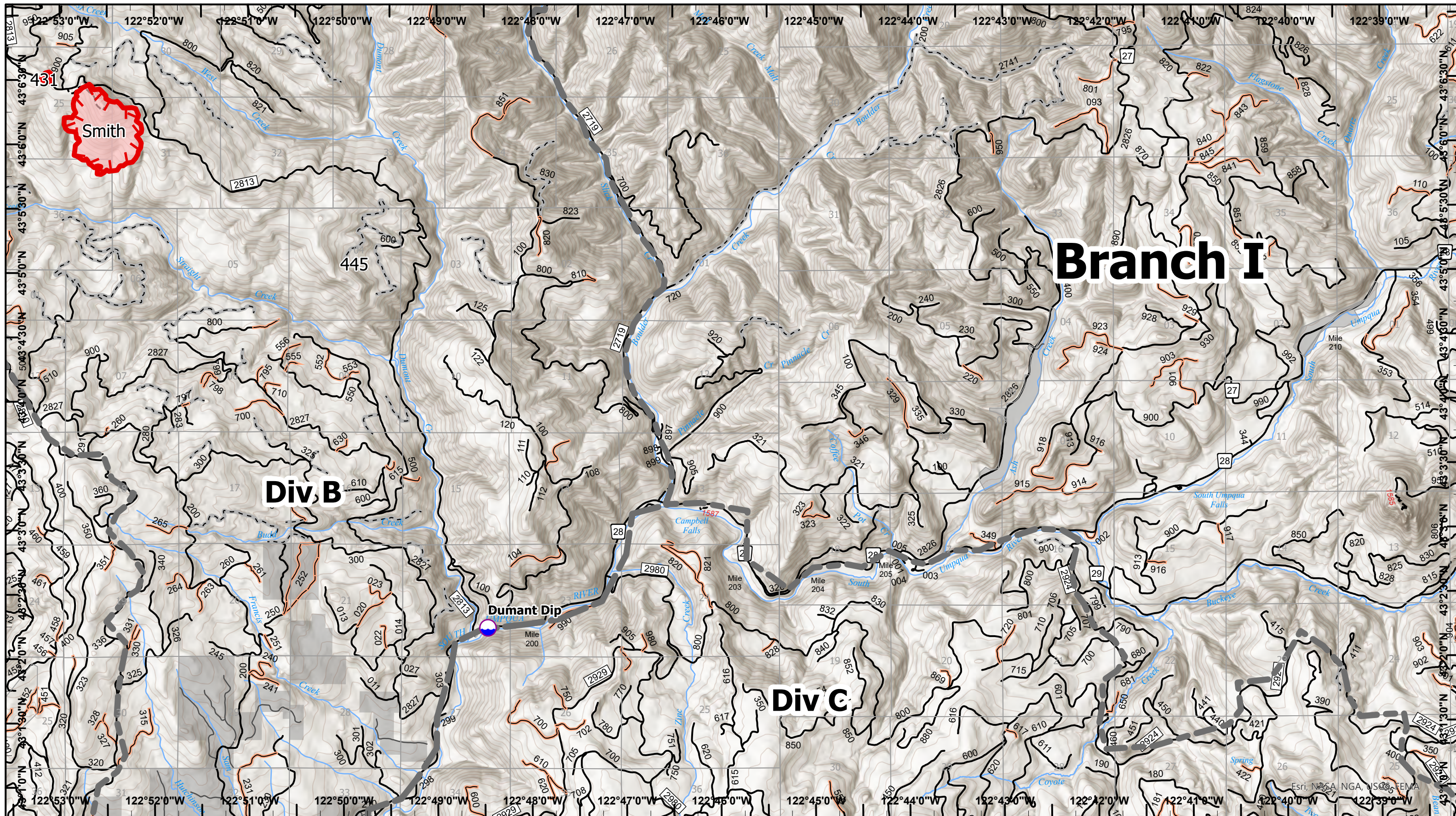


Map Updated 8/7/2021 2244

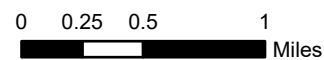


-  Dip Site
-  Open FS Roads
-  Closed FS Roads
-  Other Roads
-  Decommissioned FS Roads
-  BLM Roads
-  Trails
-  Streams
-  Other
-  Fire Edge
-  Private/Unknown















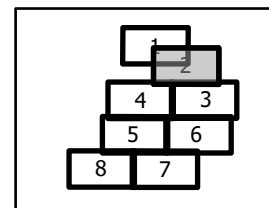
**Devil's Knob Complex  
IAP Map**

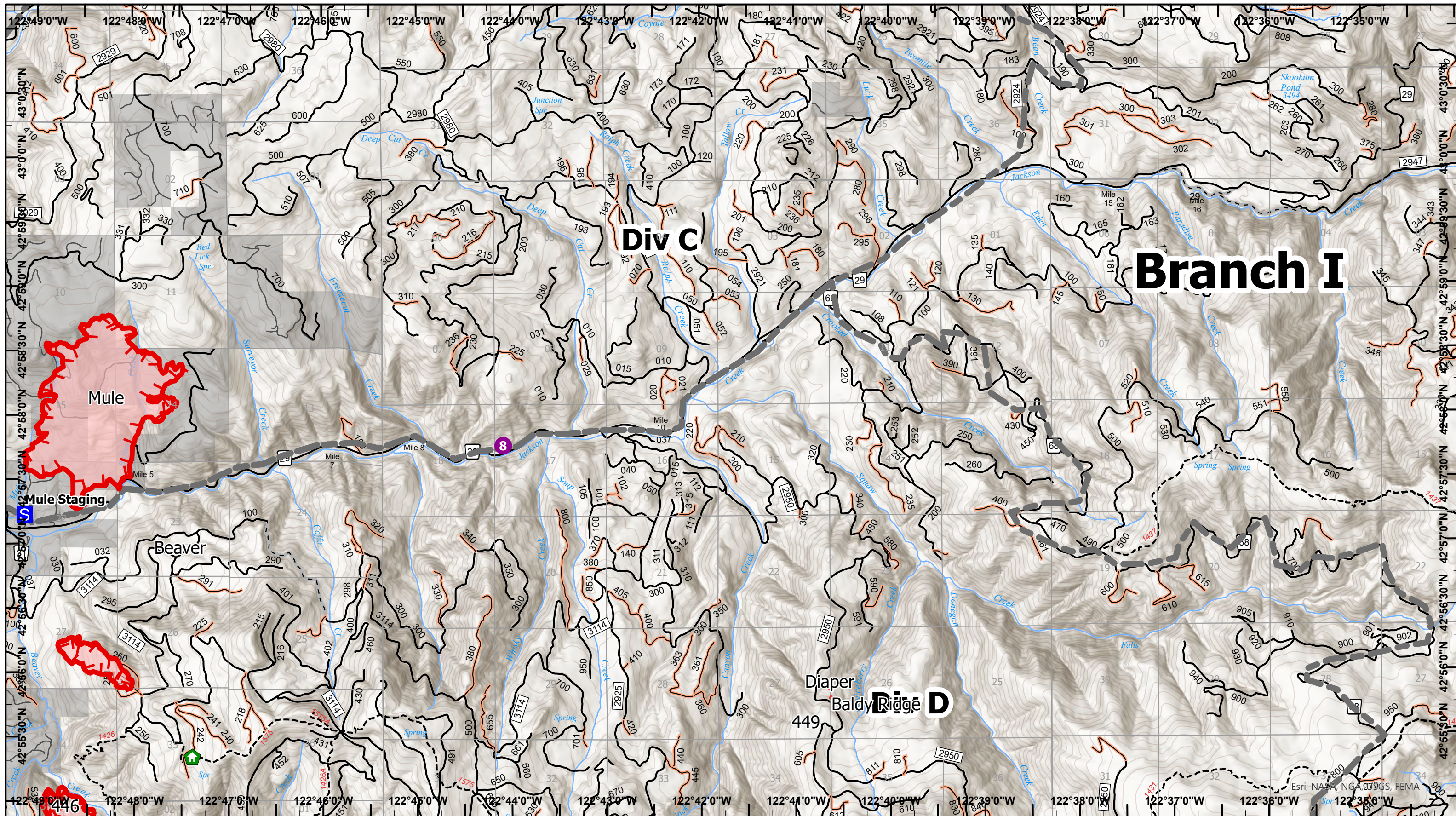


Map Updated 8/7/2021 2244

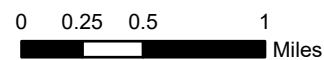


-  Dip Site
-  Open FS Roads
-  Closed FS Roads
-  Decommissioned FS Roads
-  BLM Roads
-  Trails
-  Streams
-  Other
-  Fire Edge
-  Private/Unknown





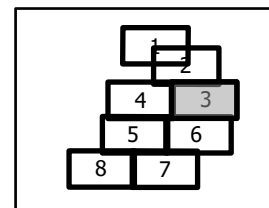
**Devil's Knob Complex  
IAP Map**

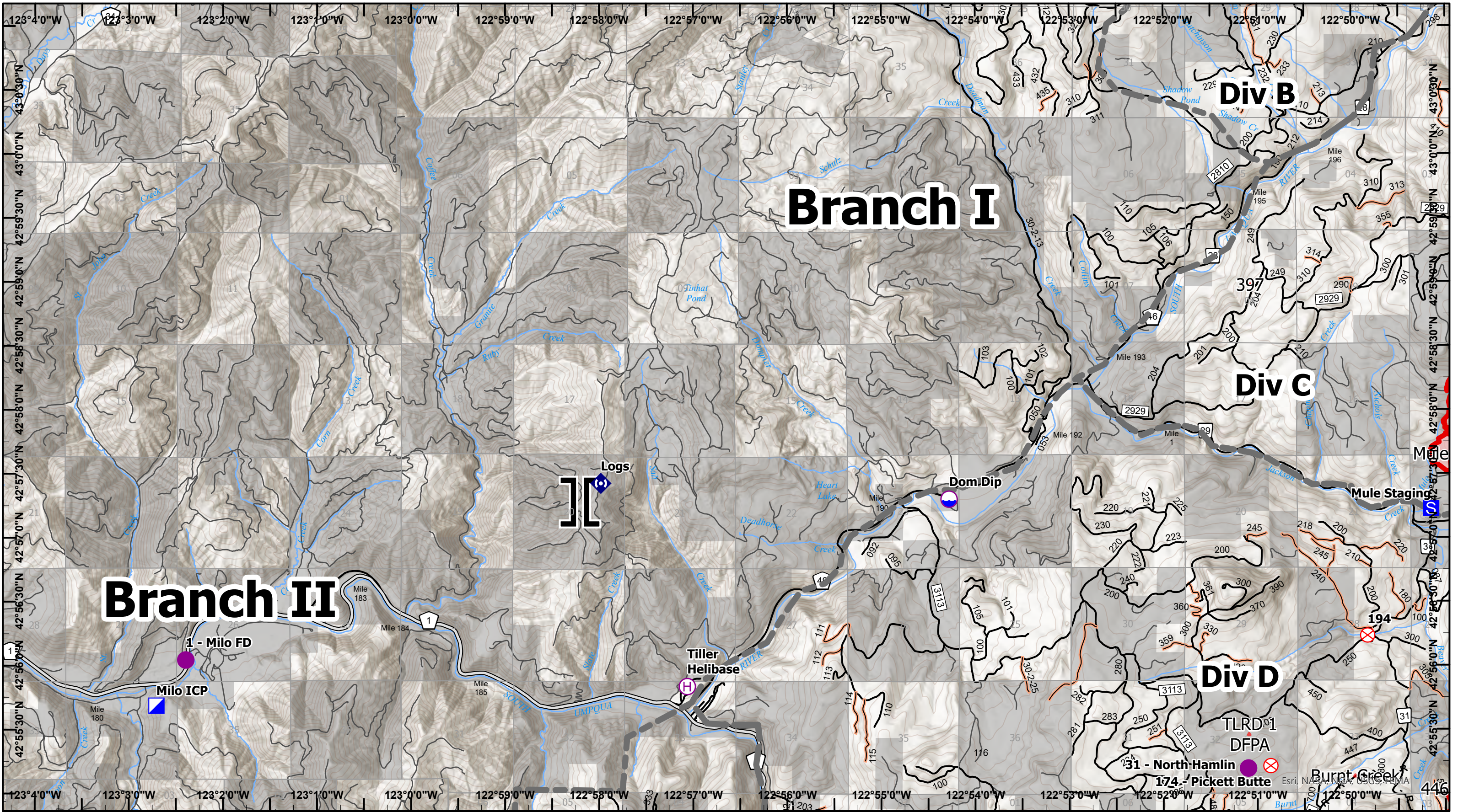


Map Updated 8/7/2021 2244

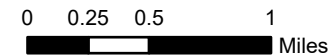


- Helispot
- S Staging Area
- E Structure Wrap
- Open FS Roads
- Closed FS Roads
- Decommissioned FS Roads
- BLM Roads
- Trails
- Streams
- Completed Road as Line
- Other
- Fire Edge
- Private/Unknown





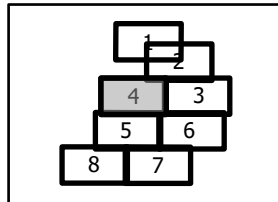
**Devil's Knob Complex IAP Map**

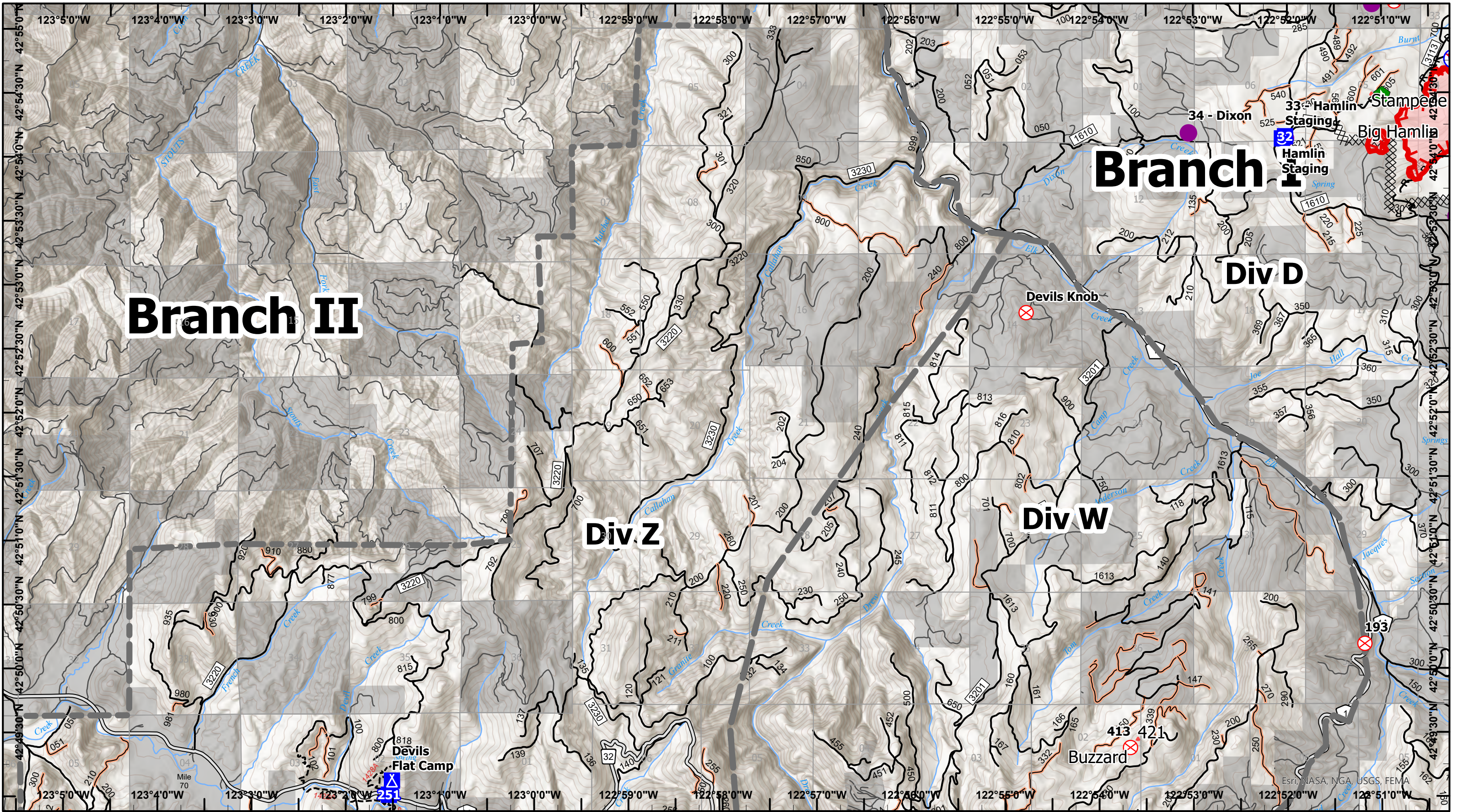


Map Updated 8/7/2021 2244

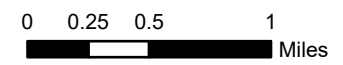


- Dip Site
- Helispot
- Helibase
- Branch Break
- Incident Command Post
- Staging Area
- Fire Origin
- Repeater
- Major Roads
- Open FS Roads
- Closed FS Roads
- BLM Roads
- Trails
- Streams
- Completed Road as Line
- Other
- Fire Edge
- Private/Unknown





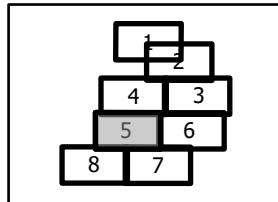
**Devil's Knob Complex IAP Map**

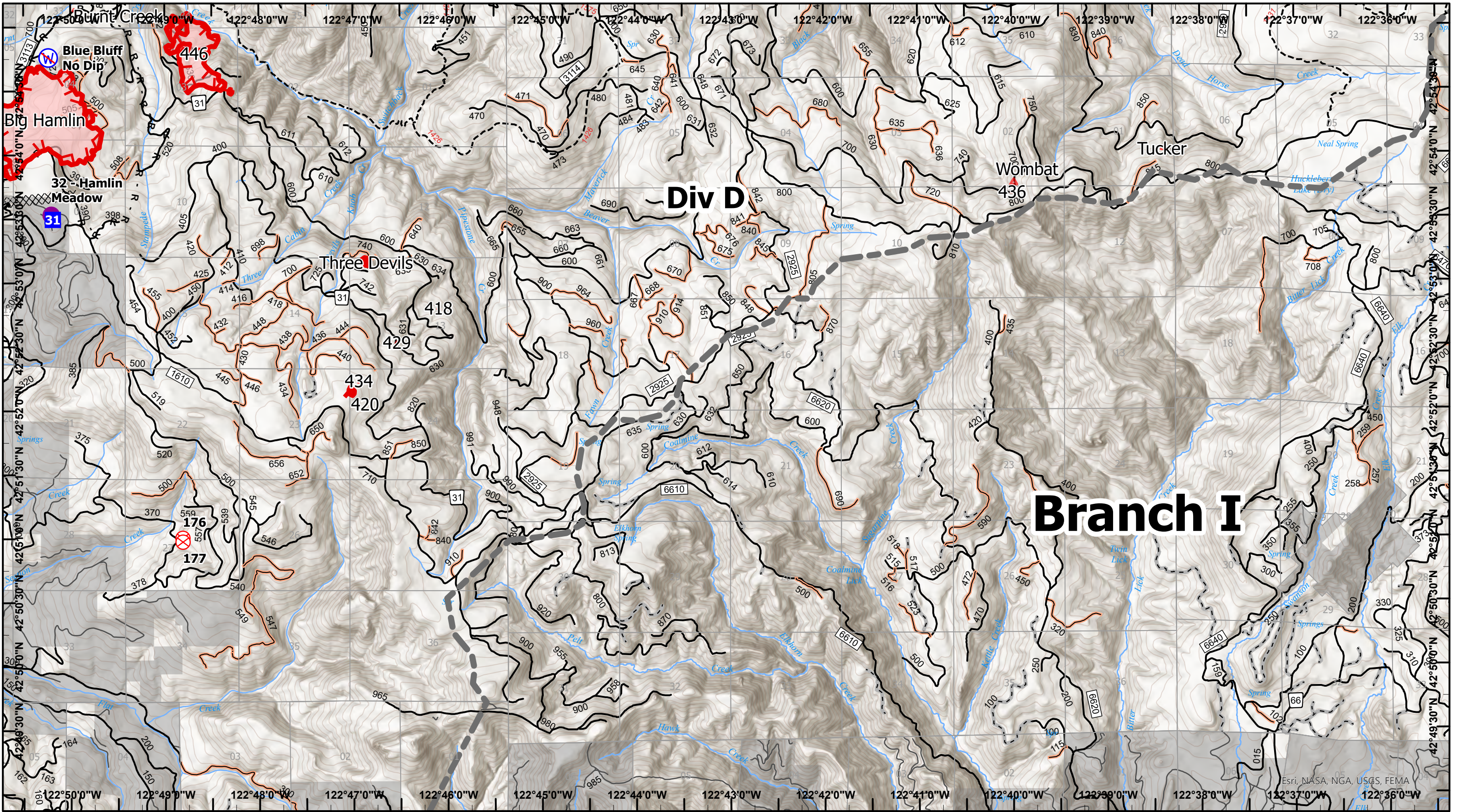


Map Updated 8/7/2021 2244



- Helispot
- Drop Point
- ⊠ Camp
- S Staging Area
- ⊗ Fire Origin
- ◆ Dozer Push
- Major Roads
- Open FS Roads
- Closed FS Roads
- BLM Roads
- Trails
- Streams
- Completed Dozer Line
- Completed Road as Line
- Other
- Fire Edge
- Private/Unknown





**Div D**

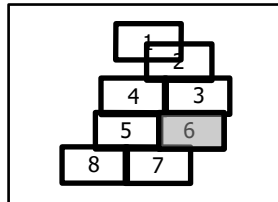
**Branch I**

**Devil's Knob Complex IAP Map**

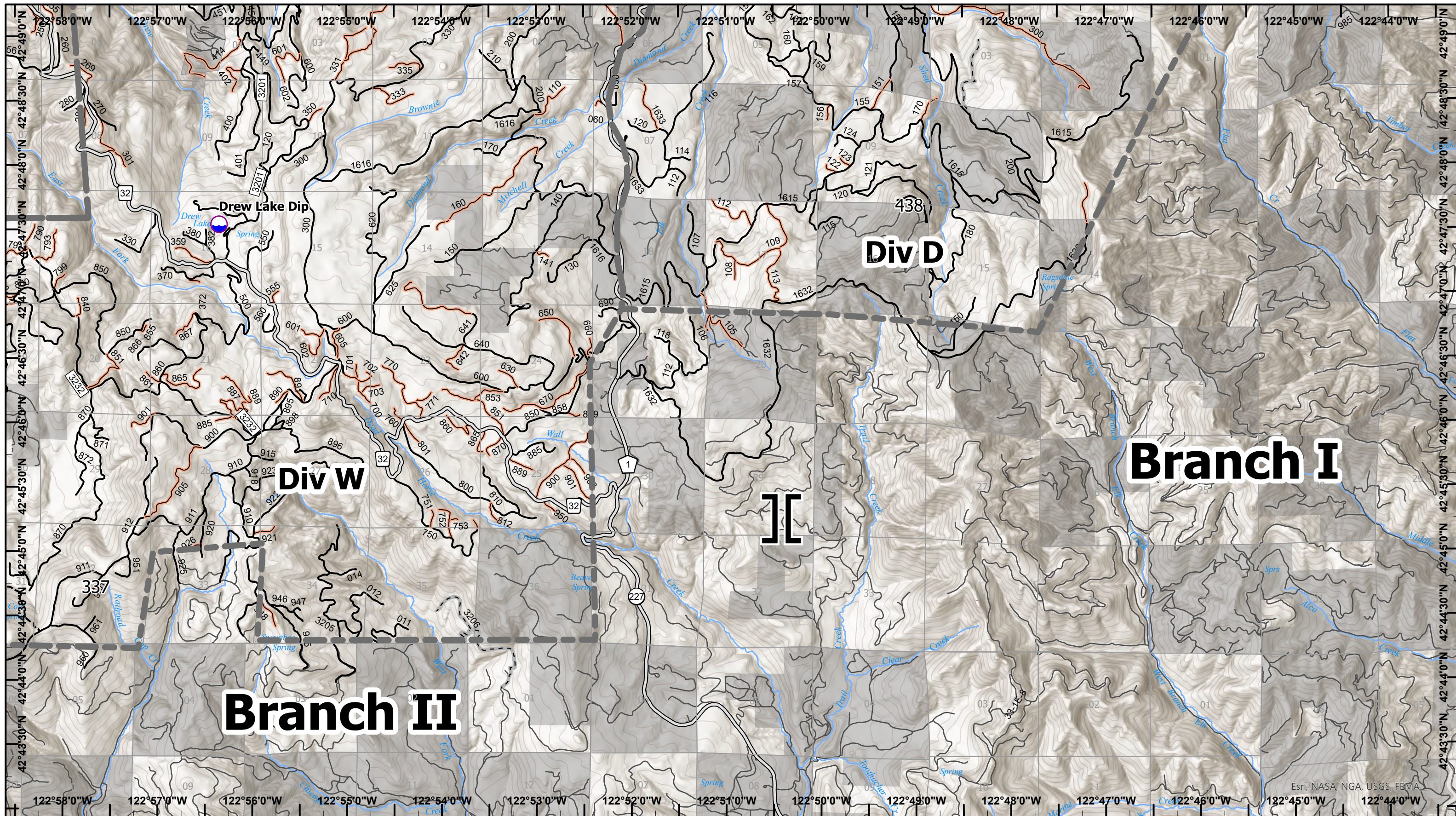
0 0.25 0.5 1 Miles  
Map Updated 8/7/2021 2245



- Helispot
- Drop Point
- ⊗ Fire Origin
- W Restricted Water Source
- Open FS Roads
- Closed FS Roads
- Other Roads
- Decommissioned FS Roads
- BLM Roads
- Trails
- Streams
- Completed Dozer Line
- R - Completed Road as Line
- Other
- Fire Edge
- Private/Unknown



Esri, NASA, NGA, USGS, FEMA



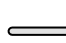





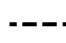





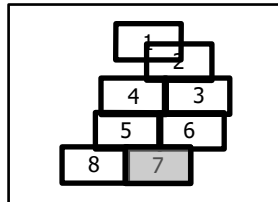
**Devil's Knob Complex IAP Map**

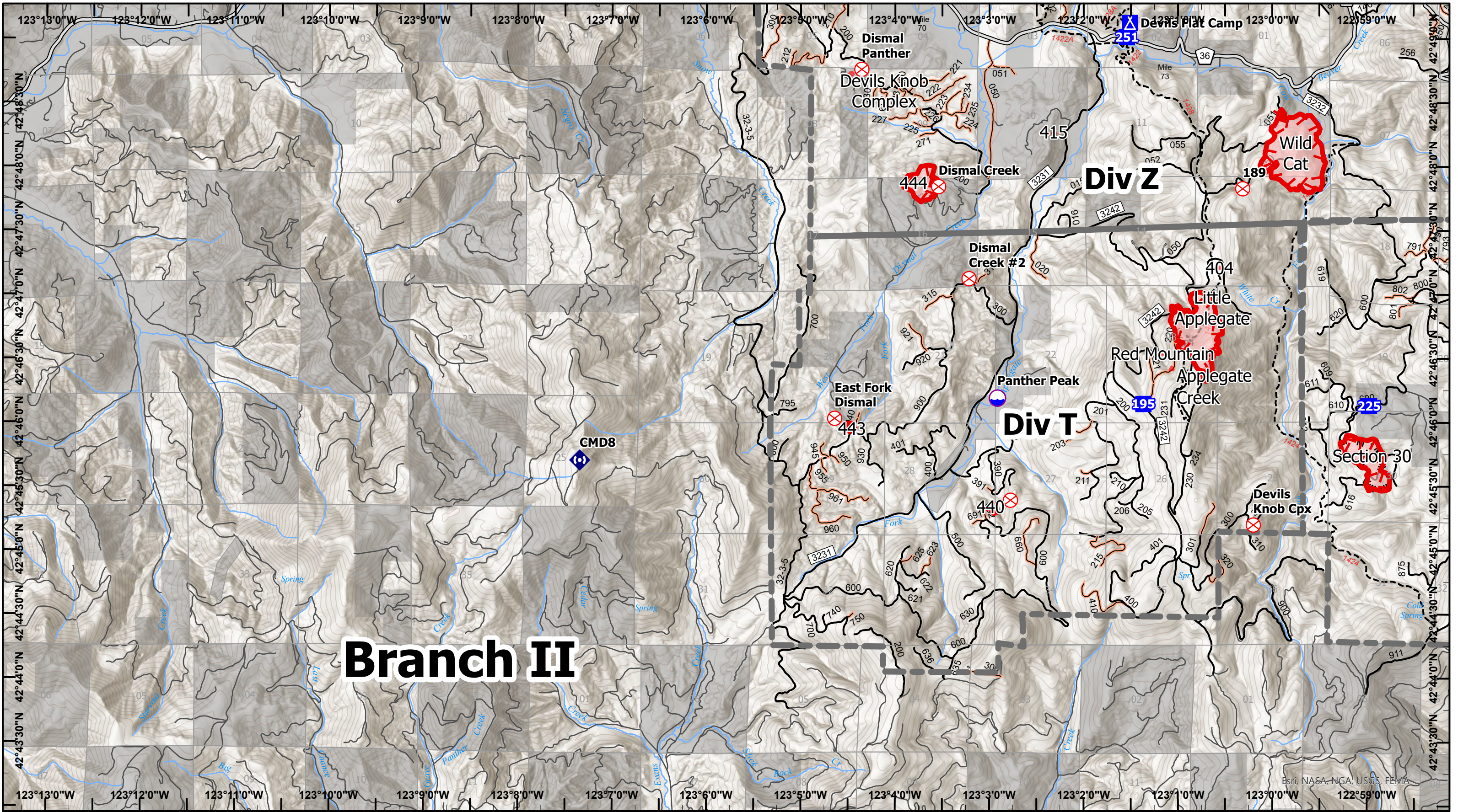
0 0.25 0.5 1 Miles

Map Updated 8/7/2021 2245



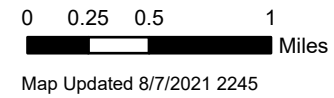
-  Dip Site
-  Branch Break
-  Major Roads
-  Open FS Roads
-  Closed FS Roads
-  Other Roads
-  Decommissioned FS Roads
-  BLM Roads
-  Trails
-  Streams
-  Other
-  Private/Unknown





# Branch II

## Devil's Knob Complex IAP Map



- Dip Site
- Drop Point
- Camp
- Fire Origin
- Repeater

- Major Roads
- Open FS Roads
- Closed FS Roads
- Other Roads
- Decommissioned FS Roads

- BLM Roads
- Trails
- Streams
- M - Completed Mixed Construction Line
- R - Completed Road as Line

- Other
- Fire Edge
- Private/Unknown

