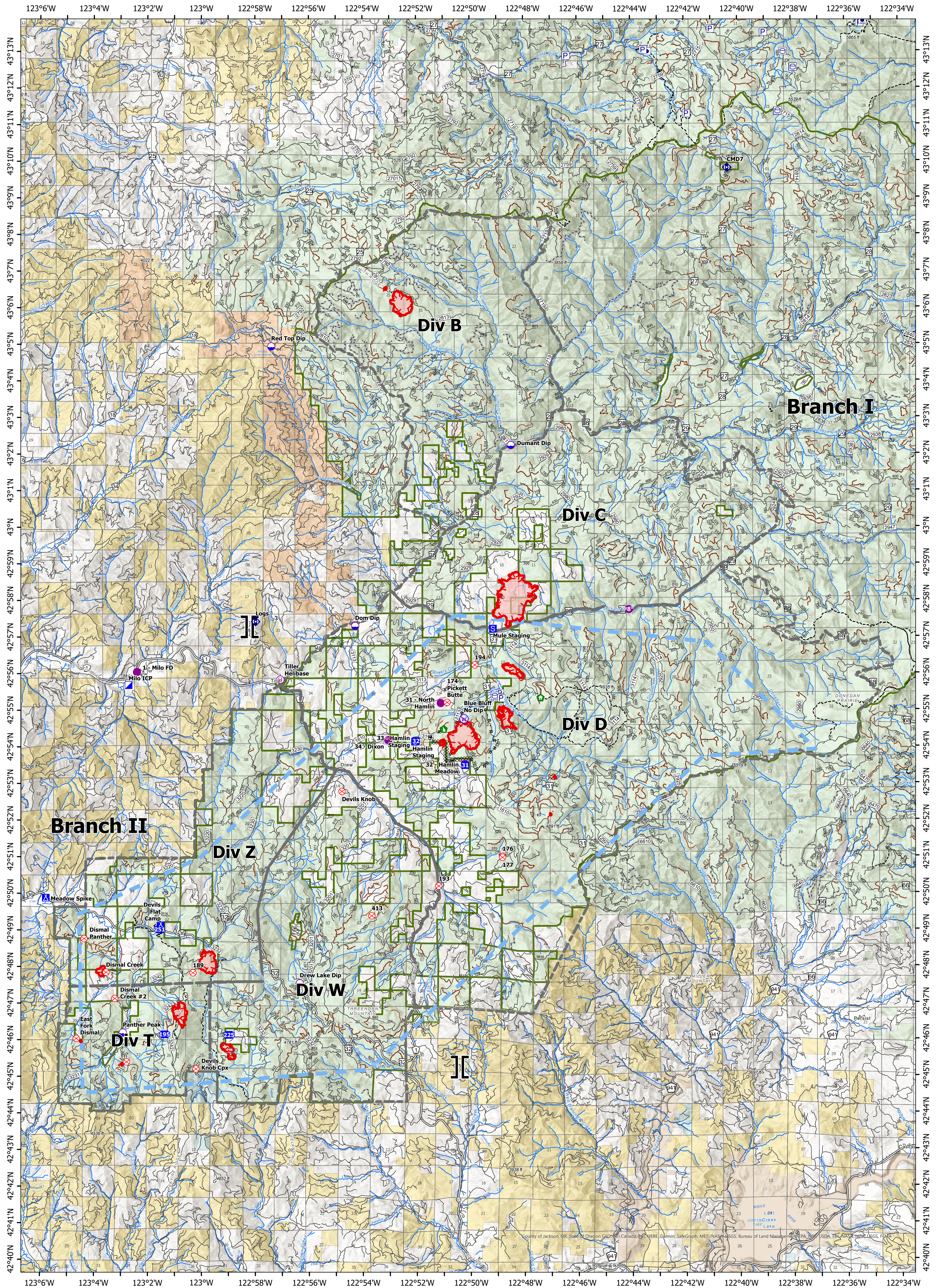


Operations



Devil's Knob Complex

OR-UPF-000450

2,041 ac. as of 08-06-21 @ 0110

- | | | | | | |
|-----------------------|----------------|-----------------------------------|-------------------------|---------------------------|-----------------|
| Dip Site | Camp | Restricted Water Source | Fire Edge | Trails | State |
| Helibase | Staging Area | Completed Dozer Line | Major_Roads | Tiller Ranger District | Private/Unknown |
| Branch Break | Fire Origin | Completed Mixed Construction Line | Open FS Roads | Bureau of Land Management | |
| Incident Command Post | Structure Wrap | Completed Road as Line | Closed FS Roads | U.S. Forest Service | |
| Drop Point | Dozer Push | Other | Other Roads | Bureau of Indian Affairs | |
| | Repeater | Temporary Flight Restriction | Decommissioned FS Roads | Other Federal | |



Map Updated: 8/7/2021 @ 2250

0 1 2 4 Miles