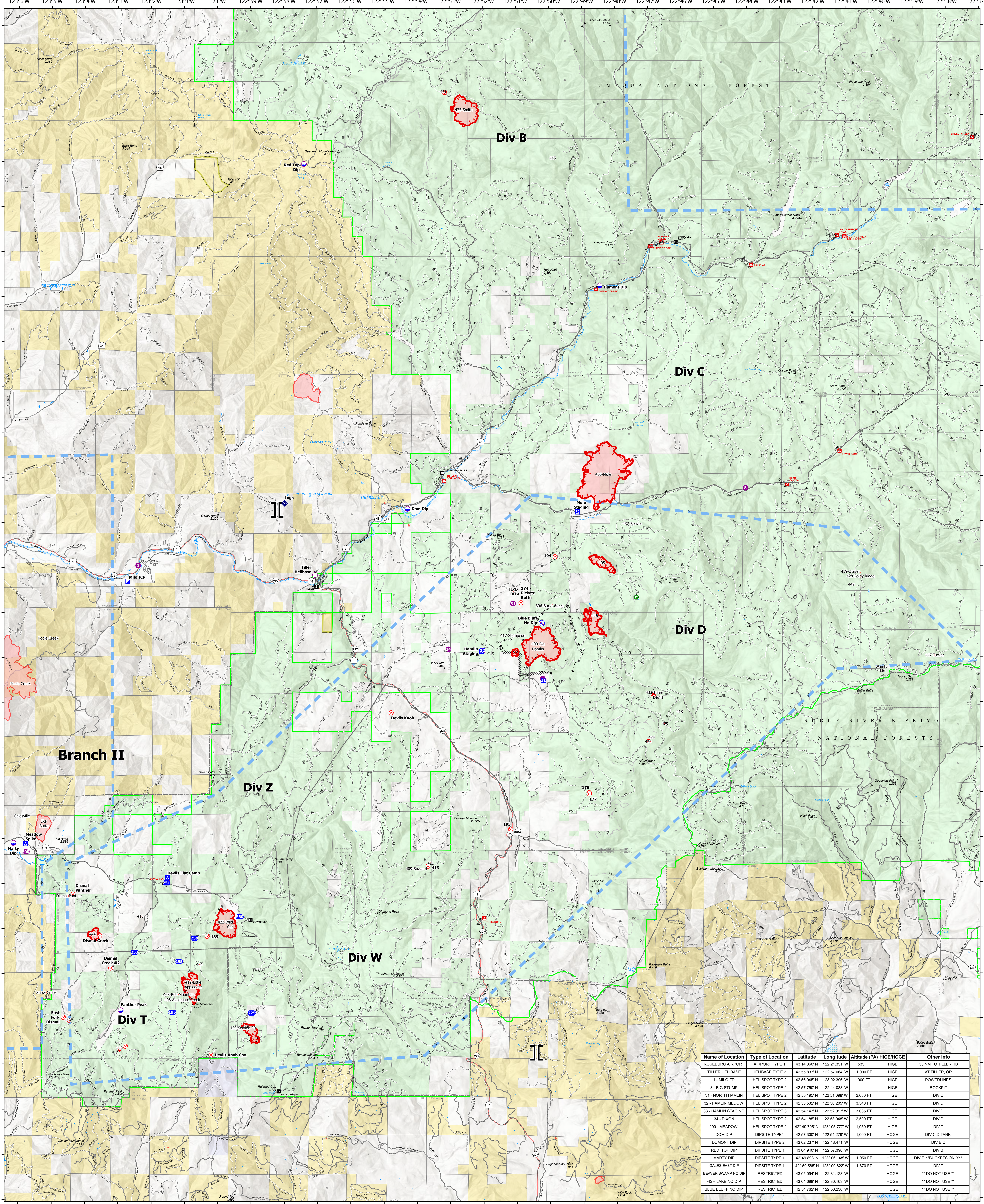


Air Operations

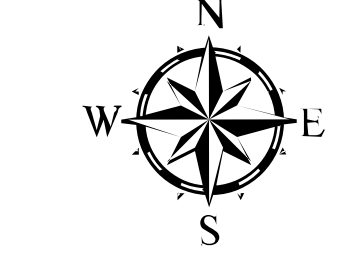


Name of Location	Type of Location	Latitude	Longitude	Altitude (PA)	HIGE/HOGE	Other Info
ROSEBURG AIRPORT	AIRPORT TYPE 1	43 14.360° N	122 21.351° W	535 FT	HIGE	35 NM TO TILLER HB
TILLER HELIBASE	HELIBASE TYPE 2	42 55.837° N	122 57.064° W	1,000 FT	HIGE	AT TILLER, OR
1 - MILO FD	HELISPOT TYPE 2	42 56.045° N	123 02.390° W	900 FT	HIGE	POWERLINES
8 - BIG STUMP	HELISPOT TYPE 2	42 57.750° N	122 44.088° W		HIGE	ROCKPIT
31 - NORTH HAMLIN	HELISPOT TYPE 2	42 55.195° N	122 51.088° W	2,680 FT	HIGE	DIV D
32 - HAMLIN MADOW	HELISPOT TYPE 2	42 53.532° N	122 50.205° W	3,540 FT	HIGE	DIV D
33 - HAMLIN STAGING	HELISPOT TYPE 3	42 54.143° N	122 52.017° W	3,025 FT	HIGE	DIV D
34 - DIXON	HELISPOT TYPE 2	42 54.185° N	122 53.048° W	2,500 FT	HIGE	DIV D
200 - MEADOW	HELISPOT TYPE 2	42 49.705° N	123 05.777° W	1,950 FT	HIGE	DIV T
DOM DIP	DIPSITE TYPE 1	42 57.300° N	122 54.279° W	1,000 FT	HOGE	DIV C,D TANK
DUMONT DIP	DIPSITE TYPE 2	43 02.237° N	122 48.471° W		HOGE	DIV B,C
RED TOP DIP	DIPSITE TYPE 1	43 04.940° N	122 57.396° W		HOGE	DIV B
MARTY DIP	DIPSITE TYPE 1	42 49.896° N	123 06.148° W	1,950 FT	HOGE	DIV T "BUCKETS ONLY"
BEAVER SWAMP NO DIP	DIPSITE TYPE 1	42 50.585° N	123 09.622° W	1,870 FT	HOGE	DIV T
FISH LAKE NO DIP	RESTRICTED	43 05.094° N	122 31.123° W		HOGE	** DO NOT USE **
BLUE BLUFF NO DIP	RESTRICTED	43 04.698° N	122 30.163° W		HOGE	** DO NOT USE **
		42 54.782° N	122 50.236° W		HOGE	** DO NOT USE **

Devils Knob Complex

OR-UPF-000450

2,400ac. as of 08-07-21 @ 1800



- Helispot
- Dip Site
- Helibase
- Branch Break
- Incident Command Post
- Drop Point
- Camp
- Staging Area
- Fire Origin
- Structure Wrap
- ◆ Repeater
- ⊕ Restricted Water Source
- Completed Dozer Line
- Completed Hand Line
- Completed Mixed Construction Line
- Completed Road as Line
- Other
- Temporary Flight Restriction
- Fire Edge



Map Updated: 8/8/2021 @ 2203

0 0.5 1 2 Nautical Miles