










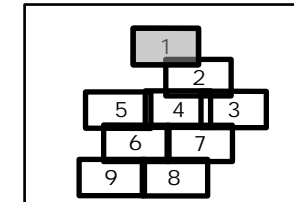


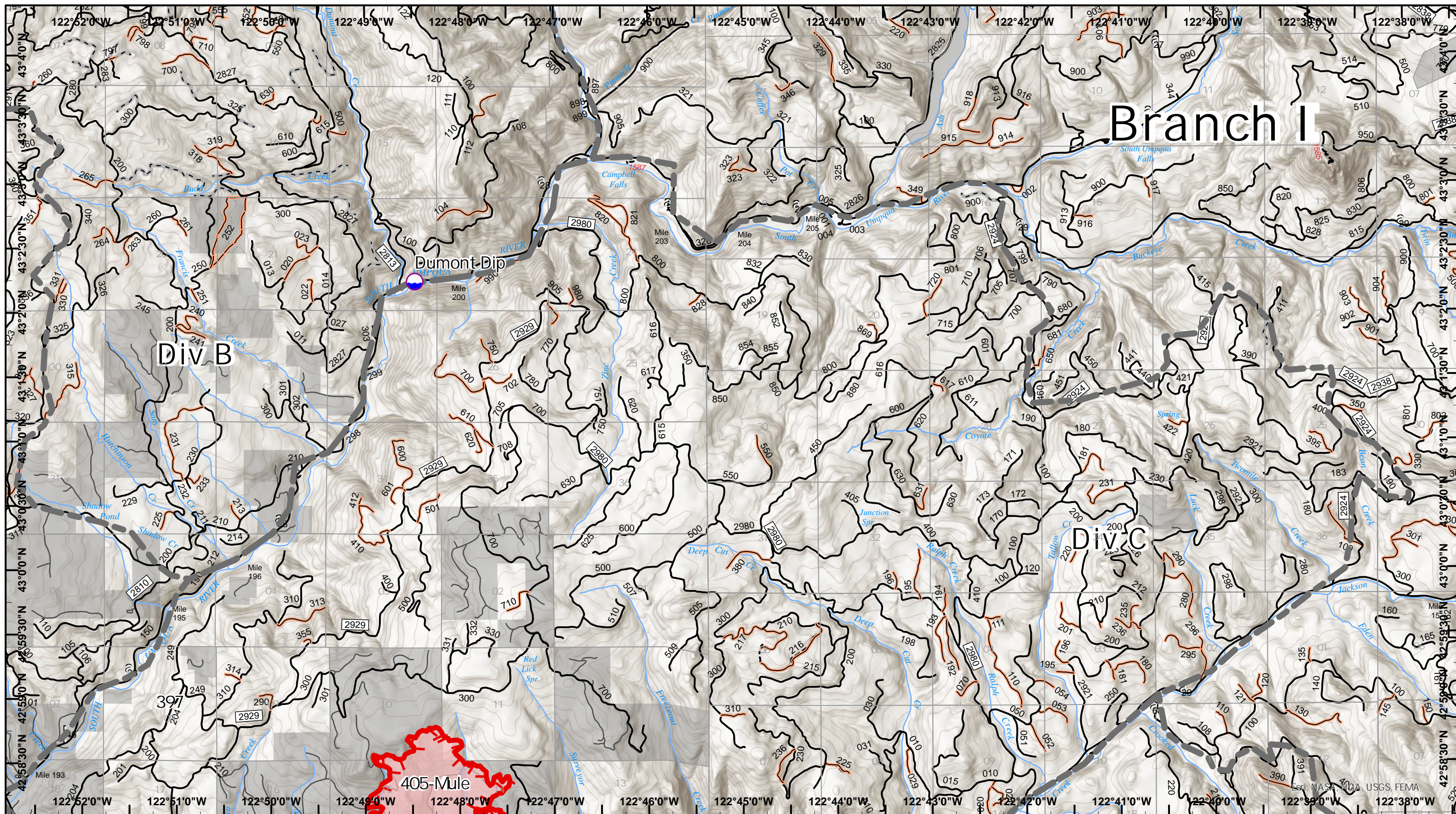
**Devils Knob Complex
IAP Map**

0 0.25 0.5 1
Miles
Map Updated 8/8/2021 2203

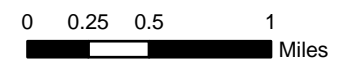


-  Dip Site
-  Open FS Roads
-  Closed FS Roads
-  Other Roads
-  Decommissioned FS Roads
-  BLM Roads
-  Trails
-  Streams
-  Other
-  Fire Edge
-  Private/Unknown





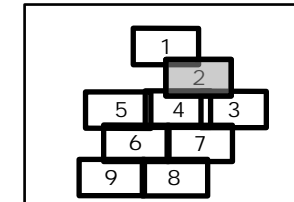
Devils Knob Complex IAP Map



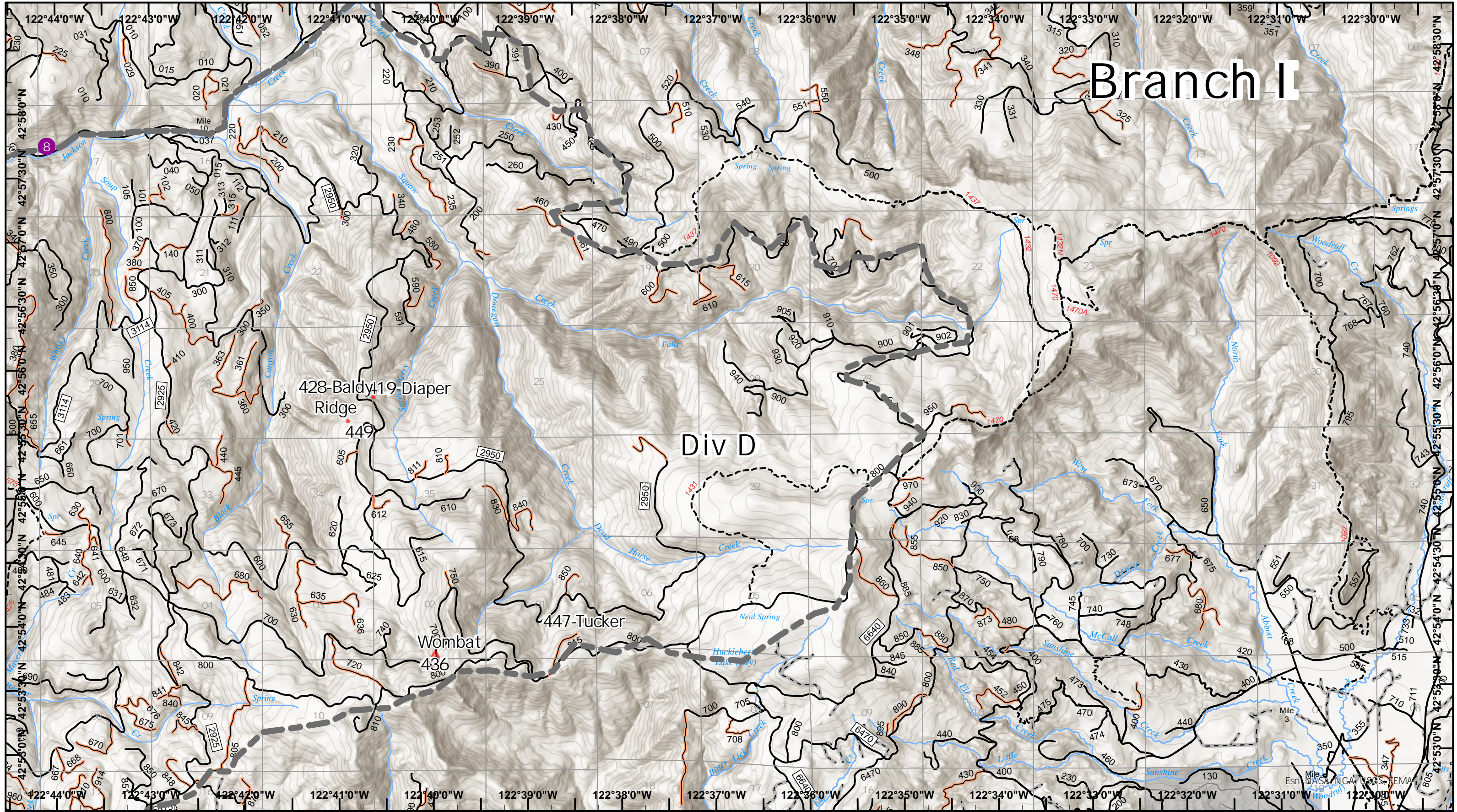
Map Updated 8/8/2021 2203



- Dip Site
- Open FS Roads
- Trails
- Closed FS Roads
- Decommissioned FS Roads
- Other
- BLM Roads
- Trails
- Streams
- Fire Edge
- Private/Unknown



Branch I

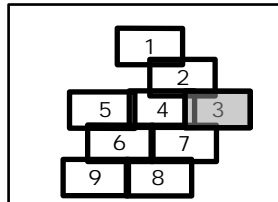


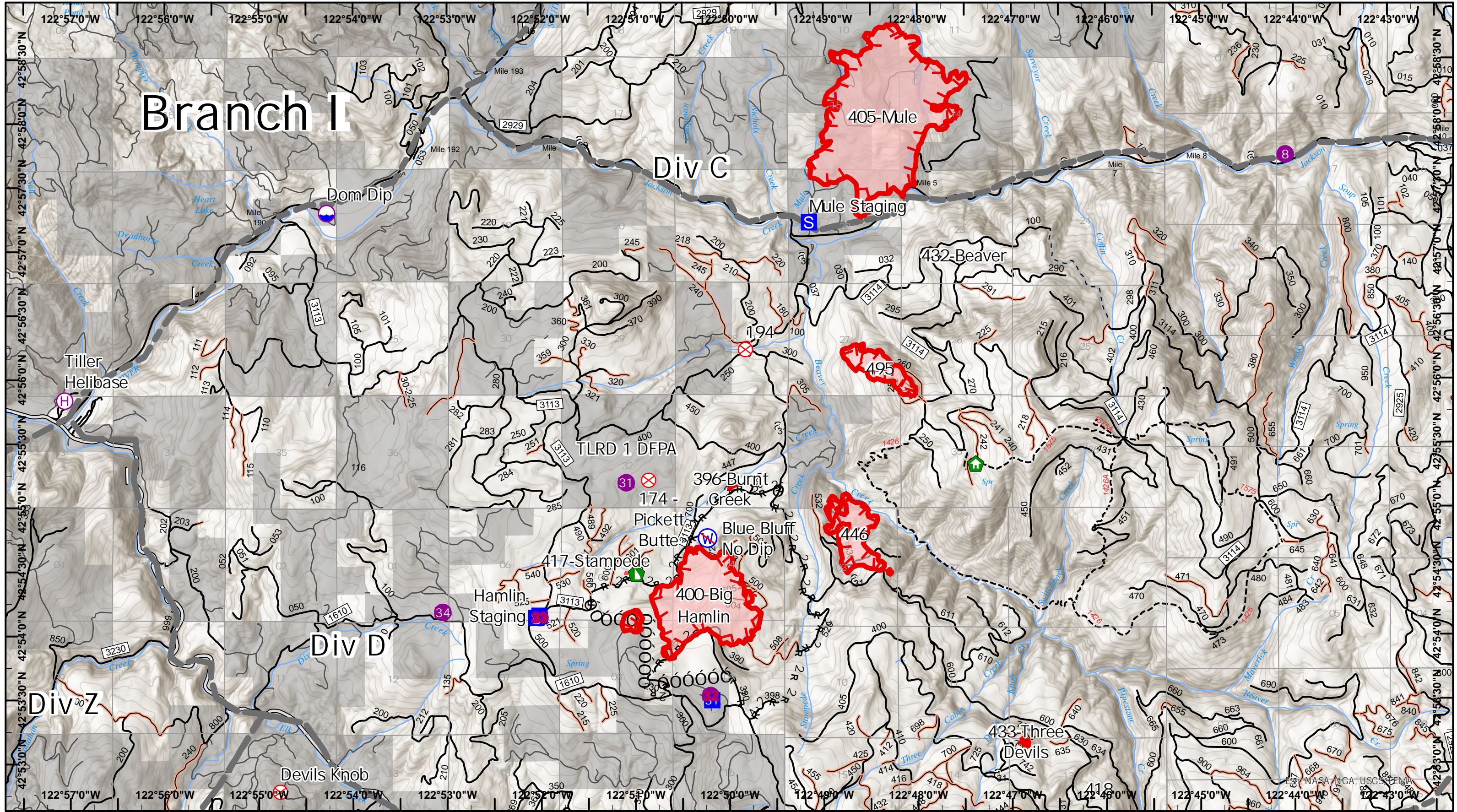
Devils Knob Complex IAP Map

0 0.25 0.5 1 Miles
Map Updated 8/8/2021 2203

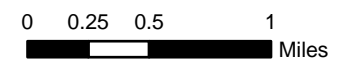


- Helispot
- Open FS Roads
- Closed FS Roads
- Other Roads
- - - Decommissioned FS Roads
- - - Trails
- Streams
- Other
- Private/Unknown





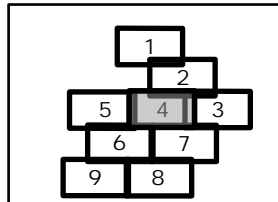
Devils Knob Complex IAP Map

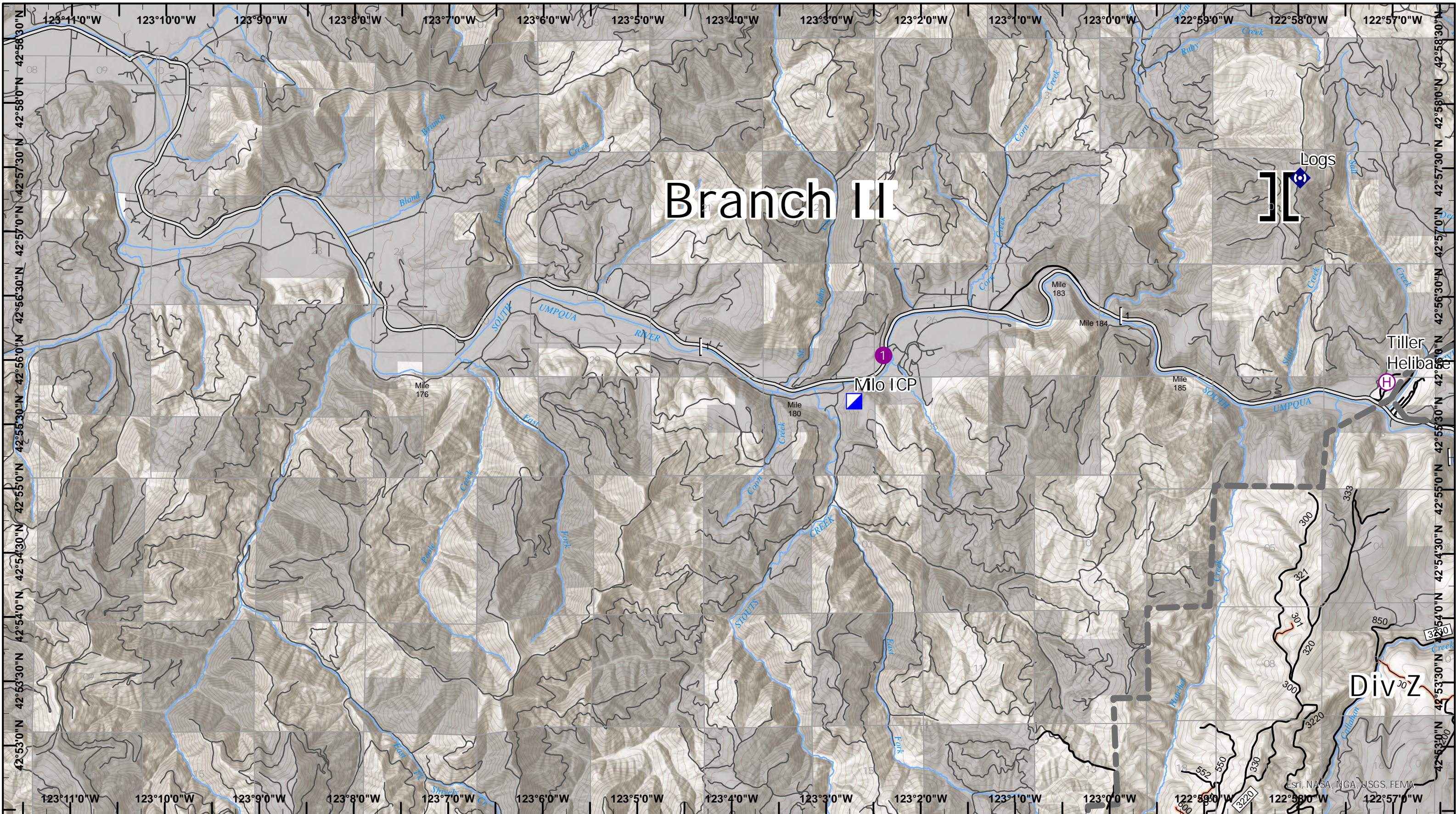


Map Updated 8/8/2021 2203

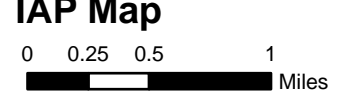


- Dip Site
- Helispot
- Helibase
- Drop Point
- Staging Area
- Fire Origin
- Structure Wrap
- Dozer Push
- Restricted Water Source
- Major Roads
- Open FS Roads
- Closed FS Roads
- Decommissioned FS Roads
- BLM Roads
- Trails
- Streams
- Completed Dozer Line
- Completed Hand Line
- Completed Road as Line
- Other
- Fire Edge
- Private/Unknown

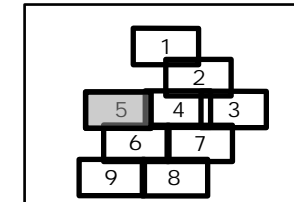




Devils Knob Complex IAP Map

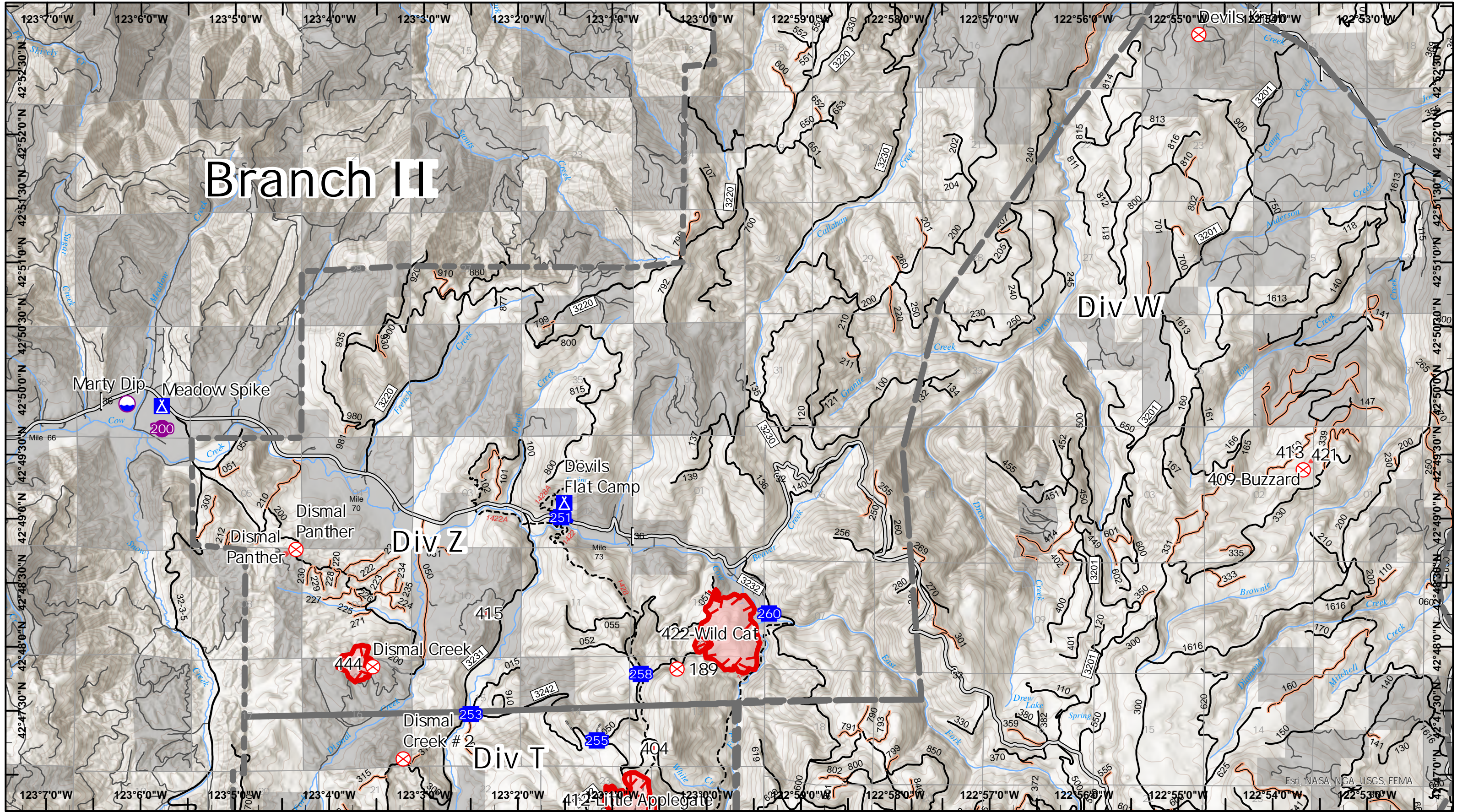


- | | | | |
|-----------------------|-----------------|-----------|-----------------|
| Helispot | Repeater | BLM Roads | Private/Unknown |
| Helibase | Major Roads | Trails | |
| Branch Break | Open FS Roads | Streams | |
| Incident Command Post | Closed FS Roads | Other | |

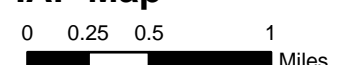


EST. NASA, NGA, JSGS, FEMA

Branch II



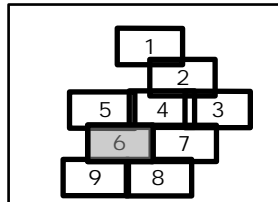
Devils Knob Complex IAP Map

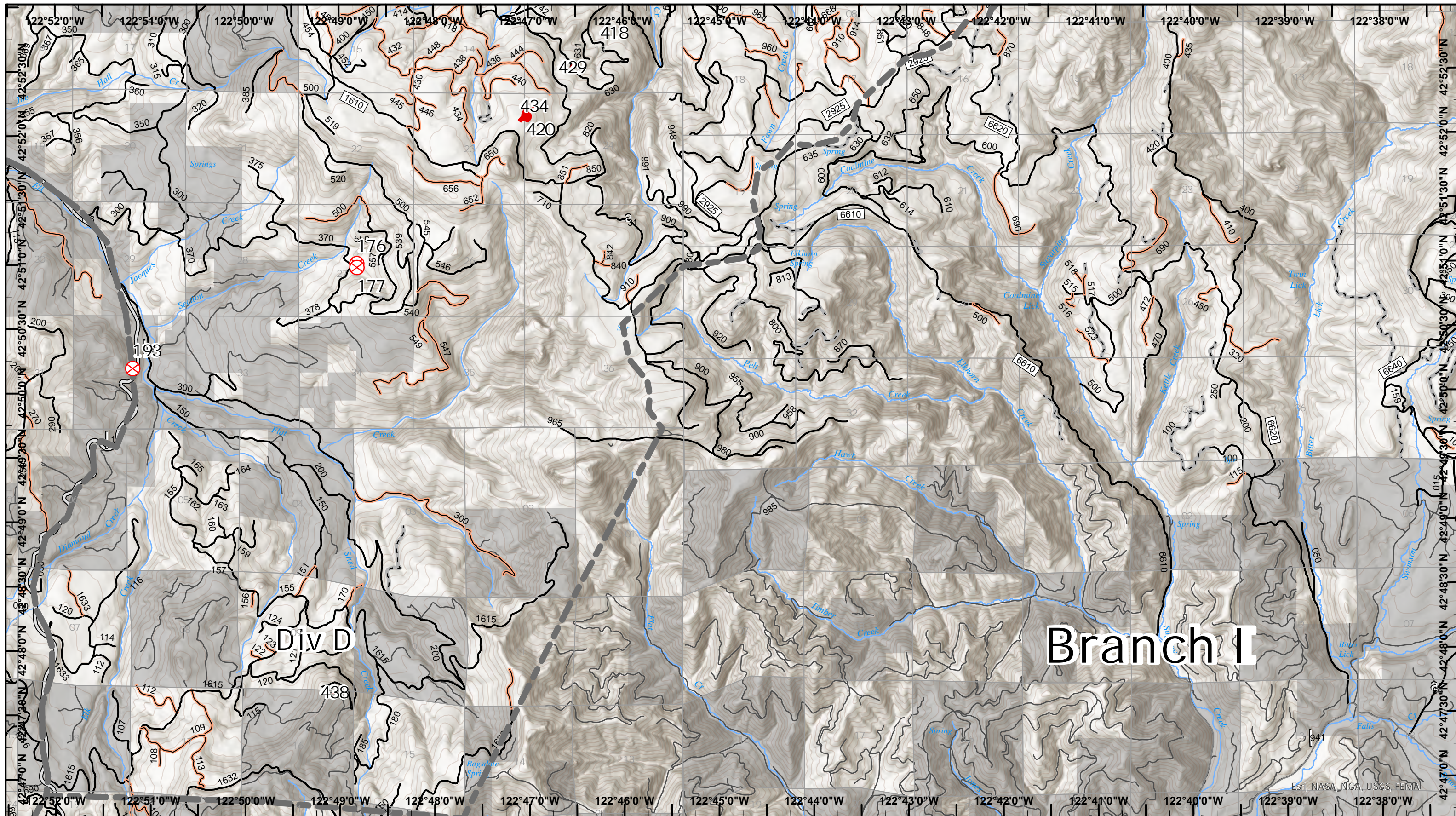


Map Updated 8/8/2021 2203



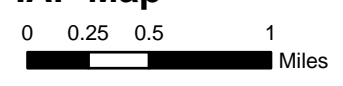
- | | | | |
|------------|-----------------|-------------------------|-----------------|
| Dip Site | Fire Origin | Other Roads | Streams |
| Helispot | Major Roads | Decommissioned FS Roads | Other |
| Drop Point | Open FS Roads | BLM Roads | Fire Edge |
| Camp | Closed FS Roads | Trails | Private/Unknown |





Branch I

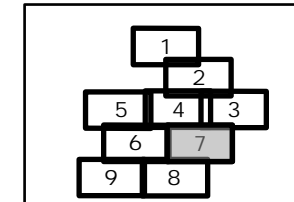
Devils Knob Complex IAP Map

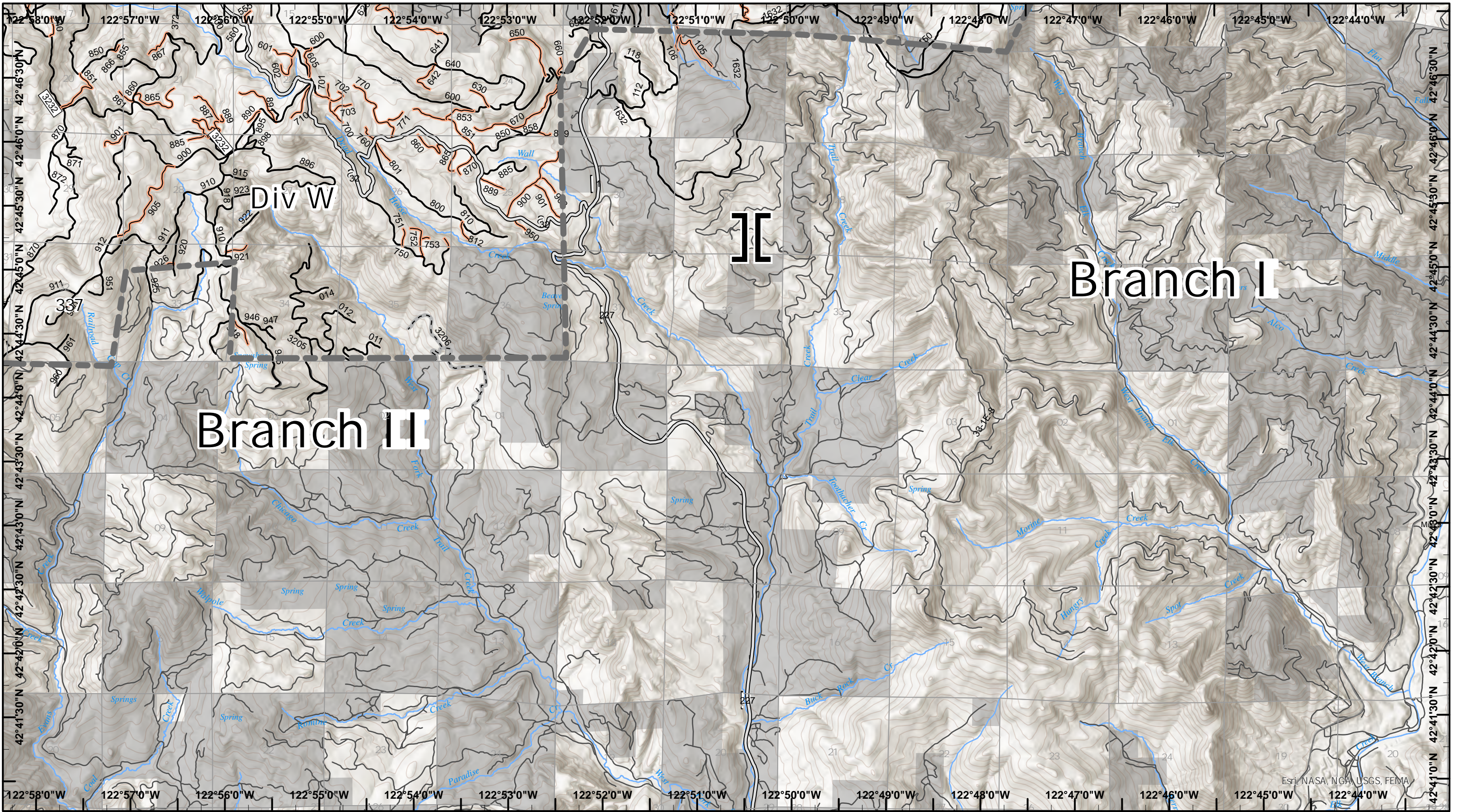


Map Updated 8/8/2021 2203

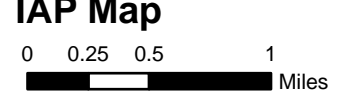


- Fire Origin
- Major Roads
- Open FS Roads
- Closed FS Roads
- Other Roads
- Decommissioned FS Roads
- BLM Roads
- Trails
- Streams
- Other
- Fire Edge
- Private/Unknown





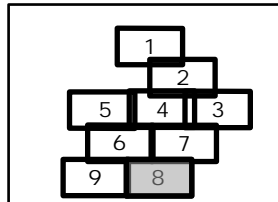
Devils Knob Complex IAP Map

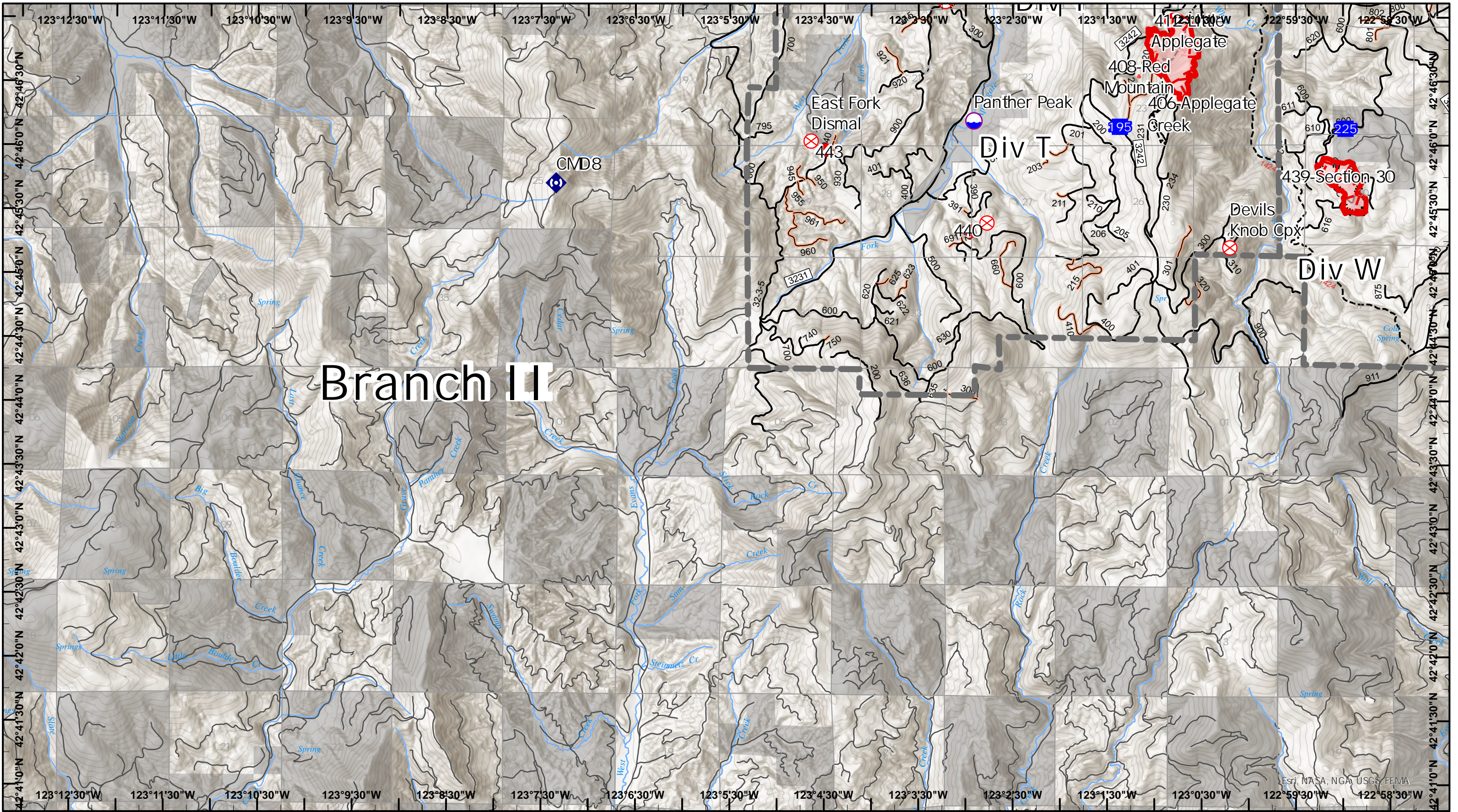


Map Updated 8/8/2021 2204



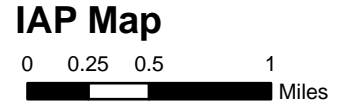
- Branch Break
- Major Roads
- Open FS Roads
- Closed FS Roads
- Other Roads
- Decommissioned FS Roads
- BLM Roads
- Trails
- Streams
- Other
- Private/Unknown





Branch II

Devils Knob Complex IAP Map



Map Updated 8/8/2021 2204

- Dip Site
- Drop Point
- Fire Origin
- Repeater
- CMD8
- Open FS Roads
- Decommissioned FS Roads
- BLM Roads
- Trails
- Streams

- M 2 Completed Mixed Construction Line
- R 2 Completed Road as Line
- Other
- Fire Edge
- Private/Unknown

