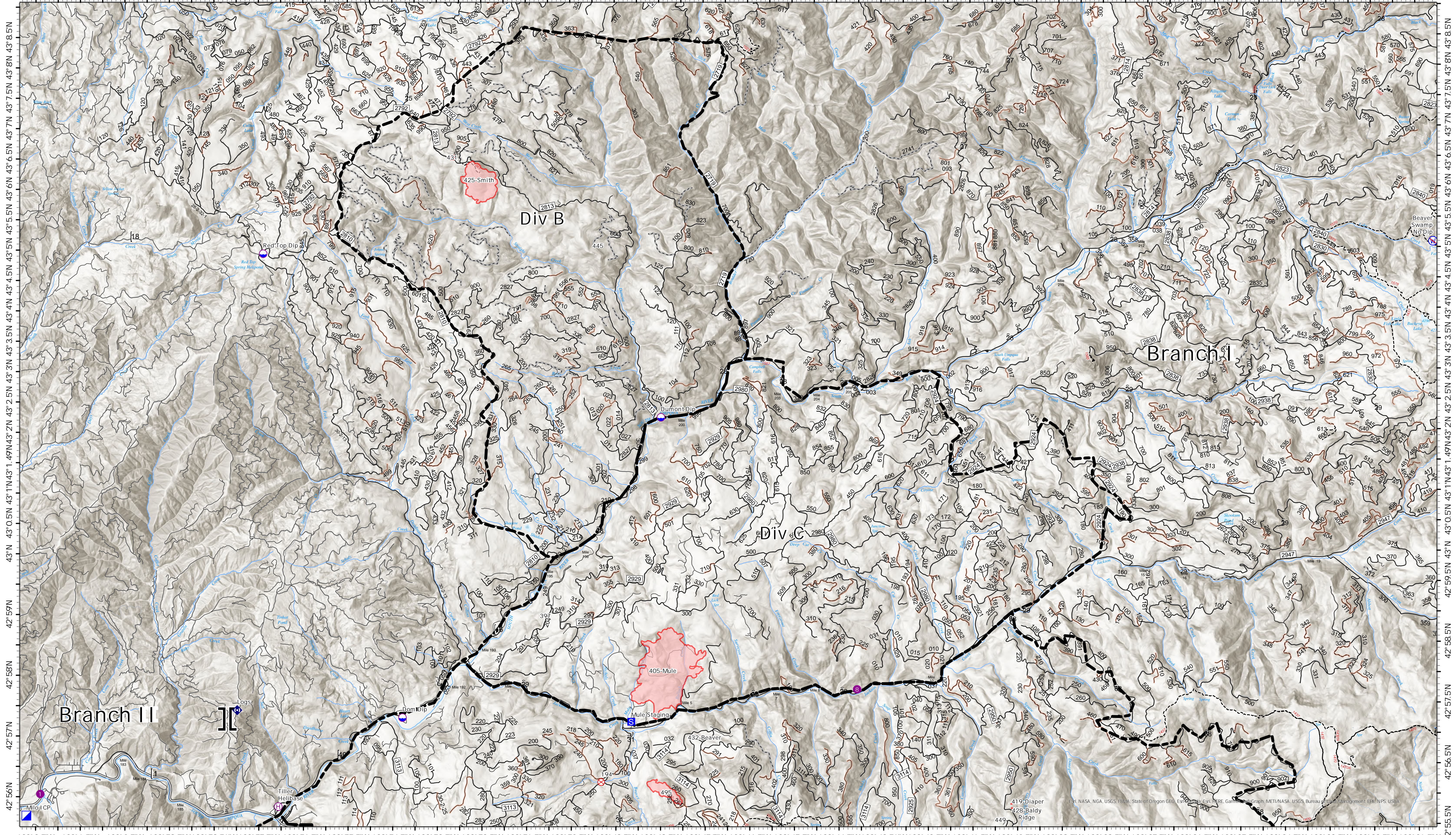


Transportation, North

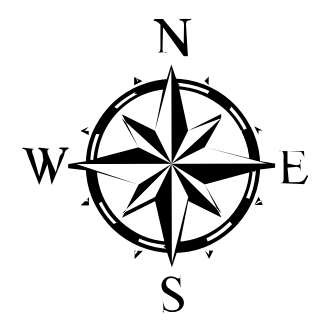
123° 2.5'W 123° 1.5'W 123° 0.5'W 122° 59.5'W 122° 58.5'W 122° 57.5'W 122° 56.5'W 122° 55.5'W 122° 54.5'W 122° 53.5'W 122° 52.5'W 122° 51.5'W 122° 50.5'W 122° 49.5'W 122° 48.5'W 122° 47.5'W 122° 46.5'W 122° 45.5'W 122° 44.5'W 122° 43.5'W 122° 42.5'W 122° 41.5'W 122° 40.5'W 122° 39.5'W 122° 38.5'W 122° 37.5'W 122° 36.5'W 122° 35.5'W 122° 34.5'W 122° 33.5'W 122° 32.5'W 122° 31.5'W



Devils Knob Complex OR-UPF-000450

Fire Perimeter Acres as of 08-07-21 @ 1800
Total Acres: 2,400

Map Updated: 8/8/2021 @ 2136



- Dip Site
- Helispot
- ⊕ Helibase
- II Branch Break
- Incident Command Post
- Staging Area
- ⊗ Fire Origin
- Structure Wrap
- ◆ Repeater
- ⊕ Restricted Water Source
- Major Roads
- BLM Roads
- Open FS Roads
- Closed FS Roads
- Other Roads
- Decommissioned FS Roads
- Trails
- Streams



0 0.5 1 2 Miles