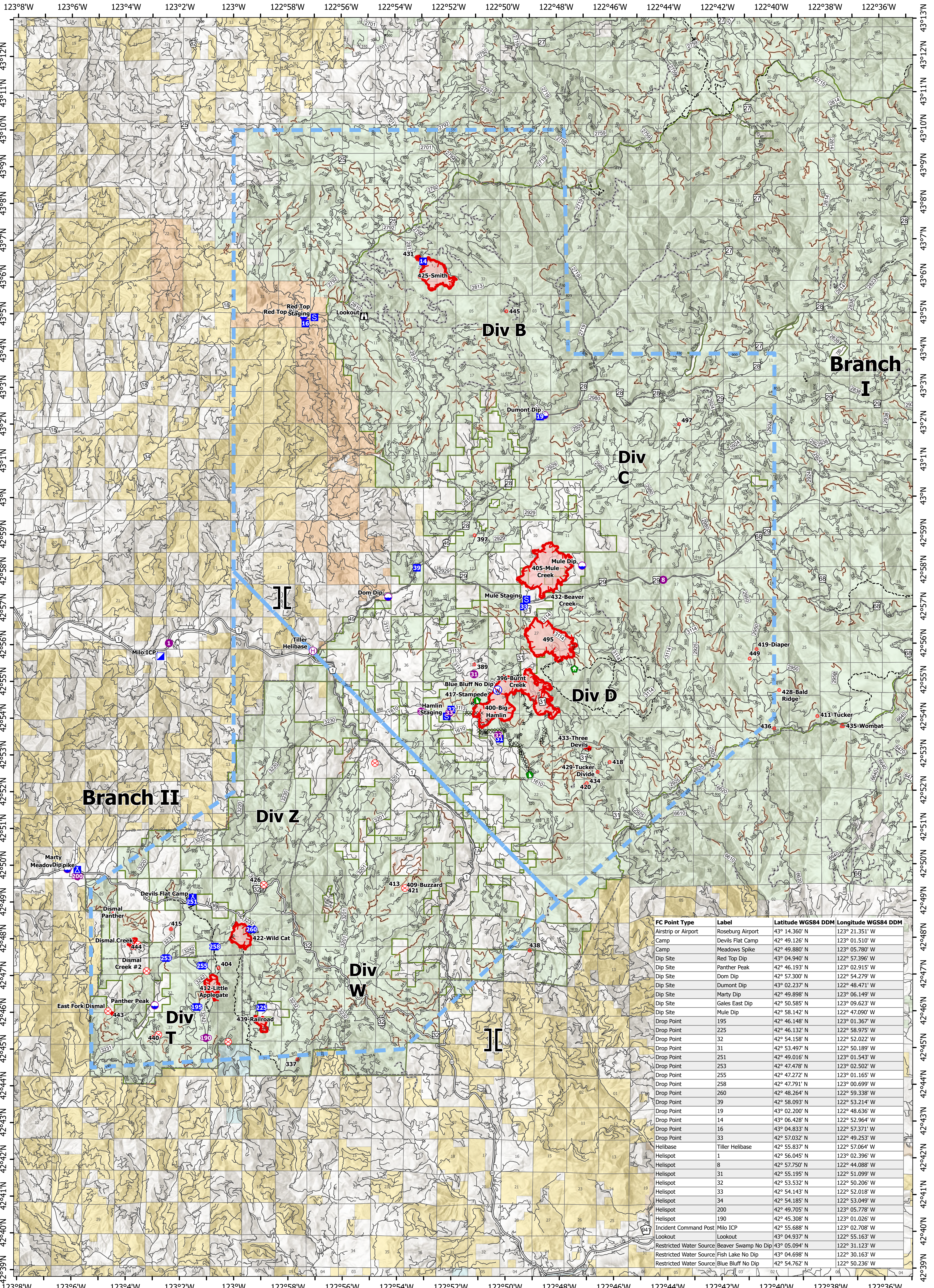


Medical

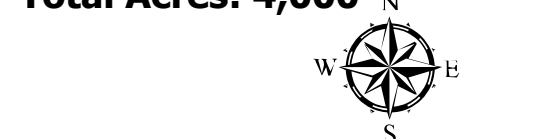


FC Point Type	Label	Latitude WGS84 DDM	Longitude WGS84 DDM
Airstrip or Airport	Roseburg Airport	43° 14.360' N	122° 21.351' W
Camp	Devils Flat Camp	42° 49.126' N	123° 01.510' W
Camp	Meadows Spike	42° 49.880' N	123° 05.780' W
Dip Site	Red Top Dip	43° 04.940' N	122° 57.396' W
Dip Site	Panther Peak	42° 46.193' N	123° 02.915' W
Dip Site	Dom Dip	42° 57.300' N	122° 54.279' W
Dip Site	Dumont Dip	43° 02.237' N	122° 48.471' W
Dip Site	Marty Dip	42° 49.898' N	123° 06.149' W
Dip Site	Gales East Dip	42° 50.585' N	123° 09.623' W
Dip Site	Mule Dip	42° 58.142' N	122° 47.090' W
Drop Point	195	42° 46.148' N	123° 01.367' W
Drop Point	225	42° 46.132' N	122° 58.975' W
Drop Point	32	42° 54.158' N	122° 52.022' W
Drop Point	31	42° 53.497' N	122° 50.189' W
Drop Point	251	42° 49.016' N	123° 01.543' W
Drop Point	253	42° 47.478' N	123° 02.502' W
Drop Point	255	42° 47.272' N	123° 01.165' W
Drop Point	258	42° 47.791' N	123° 00.699' W
Drop Point	260	42° 48.264' N	122° 59.338' W
Drop Point	39	42° 58.093' N	122° 53.214' W
Drop Point	19	43° 02.200' N	122° 48.636' W
Drop Point	14	43° 06.428' N	122° 52.964' W
Drop Point	16	43° 04.833' N	122° 57.371' W
Drop Point	33	42° 57.032' N	122° 49.253' W
Helibase	Tiller Helibase	42° 55.837' N	122° 57.064' W
Helispot	1	42° 56.045' N	123° 02.396' W
Helispot	8	42° 57.750' N	122° 44.088' W
Helispot	31	42° 55.195' N	122° 51.099' W
Helispot	32	42° 53.532' N	122° 50.206' W
Helispot	33	42° 54.143' N	122° 52.018' W
Helispot	34	42° 54.185' N	122° 53.049' W
Helispot	200	42° 49.705' N	123° 05.778' W
Helispot	190	42° 45.308' N	123° 01.026' W
Incident Command Post	Milo ICP	42° 55.688' N	123° 02.708' W
Lookout	Lookout	43° 04.937' N	122° 55.163' W
Restricted Water Source	Beaver Swamp No Dip	43° 05.094' N	122° 31.123' W
Restricted Water Source	Fish Lake No Dip	43° 04.698' N	122° 30.163' W
Restricted Water Source	Blue Bluff No Dip	42° 54.762' N	122° 50.236' W

Devils Knob Complex

OR-UPF-000450

Fire Perimeter Acres as of 08-09-21 @ 2135
Total Acres: 4,000



Map Updated: 8/10/2021 @ 2240

- Dip Site
- Staging Area
- Completed Hand Line
- Open FS Roads
- Helispot
- ⊠ Lookout
- Completed Mixed Construction Line
- Closed FS Roads
- ⊙ Helibase
- ⊗ Fire Origin
- Completed Road as Line
- Other Roads
- II Branch Break
- 👤 Structure Wrap
- Other
- Decom_FS_Roads
- 👤 Incident Command Post
- 👤 Dozer Push
- Temporary Flight Restriction
- BLM_Roads
- 👤 Drop Point
- 👤 Restricted Water Source
- 👤 Fire Edge
- Trails
- 👤 Camp
- ⊗ Completed Dozer Line
- Major_Roads
- Bureau of Land Management
- 👤 Wildfire Daily Fire Perimeter



0 1 2 4 Miles