

Devils Knob Complex IAP Map

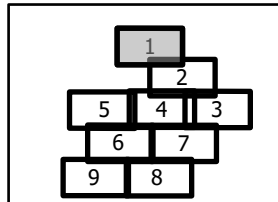
0 0.25 0.5 1 Miles
Map Updated 8/10/2021 2202

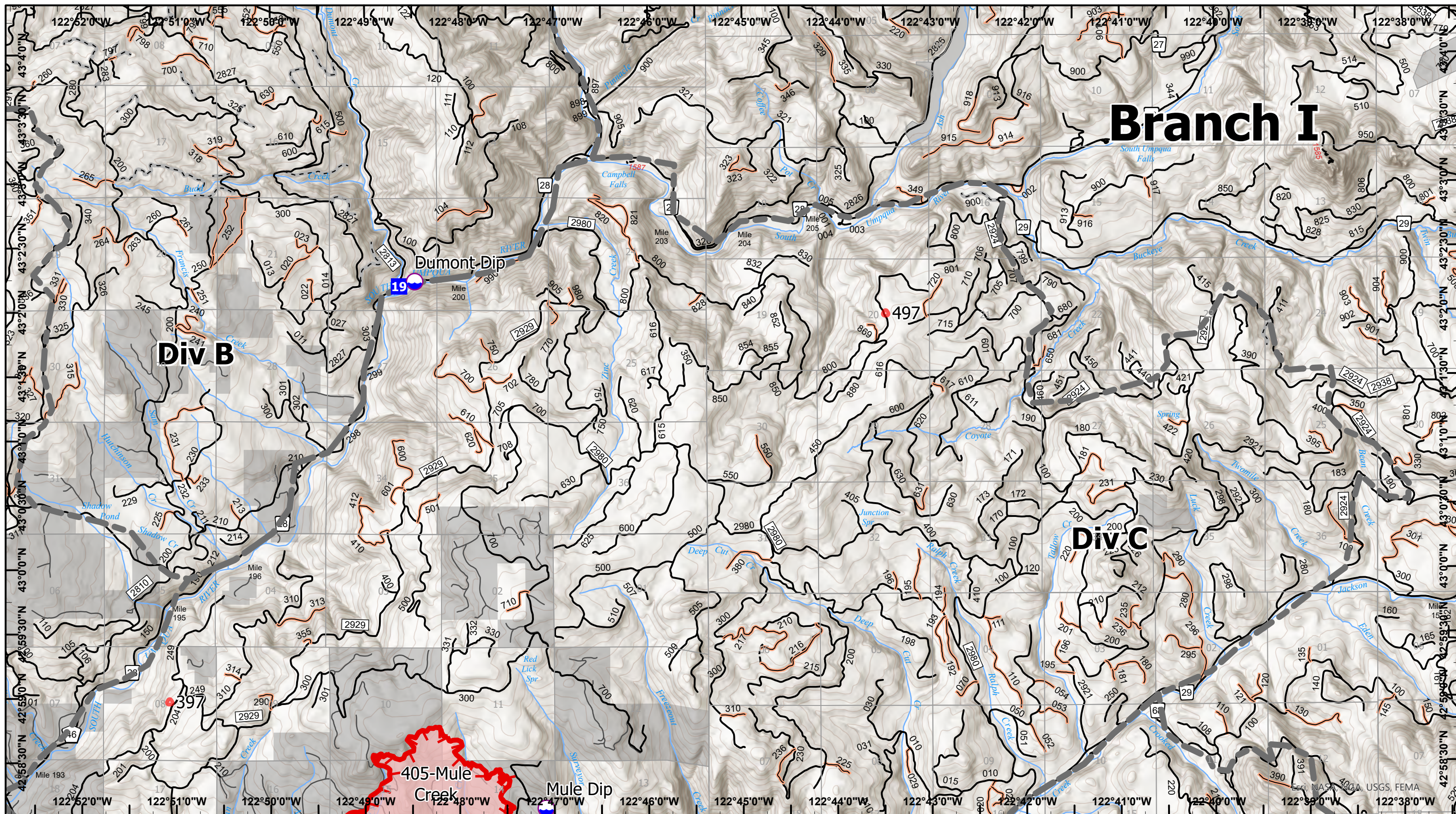


- Dip Site
- Drop Point
- Staging Area
- Lookout

- Open FS Roads
- Closed FS Roads
- Other Roads
- Decommissioned FS Roads
- BLM Roads
- Trails
- Streams
- Other

- Fire Edge
 - Private/Unknown
- Fires that are contained or out





Branch I

Div B

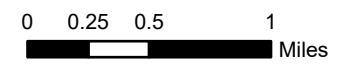
Div C

405-Mule Creek

Mule Dip

Dumont-Dip

Devils Knob Complex IAP Map

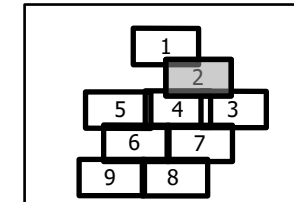


Map Updated 8/10/2021 2202



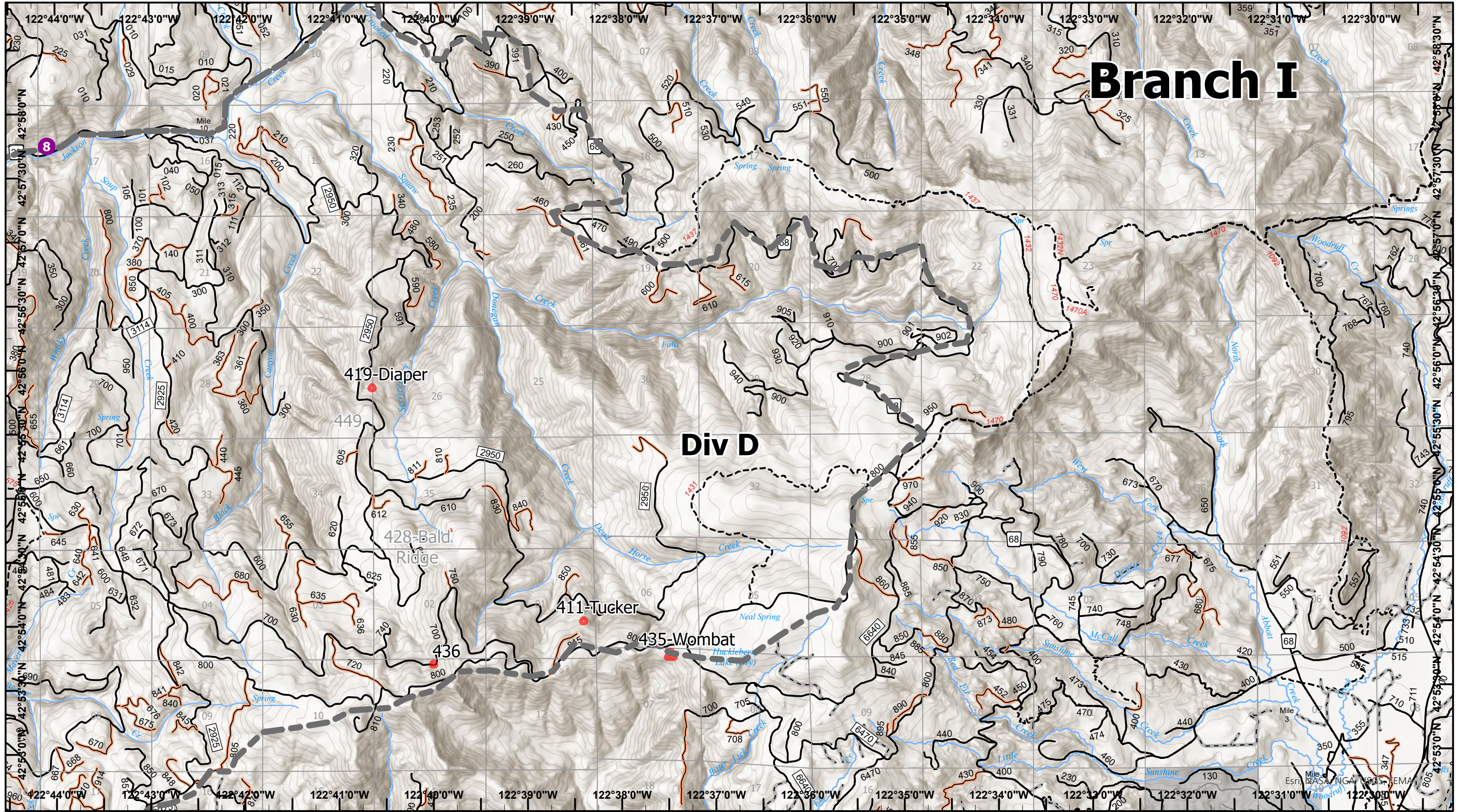
- Dip Site
- Drop Point
- Open FS Roads
- Closed FS Roads
- Decommissioned FS Roads
- BLM Roads
- Trails
- Fire Edge
- Private/Unknown
- Other
- Streams

Fires that are contained or out

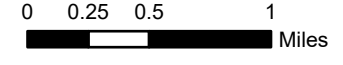


Branch I

Div D



Devils Knob Complex IAP Map

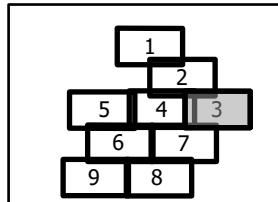


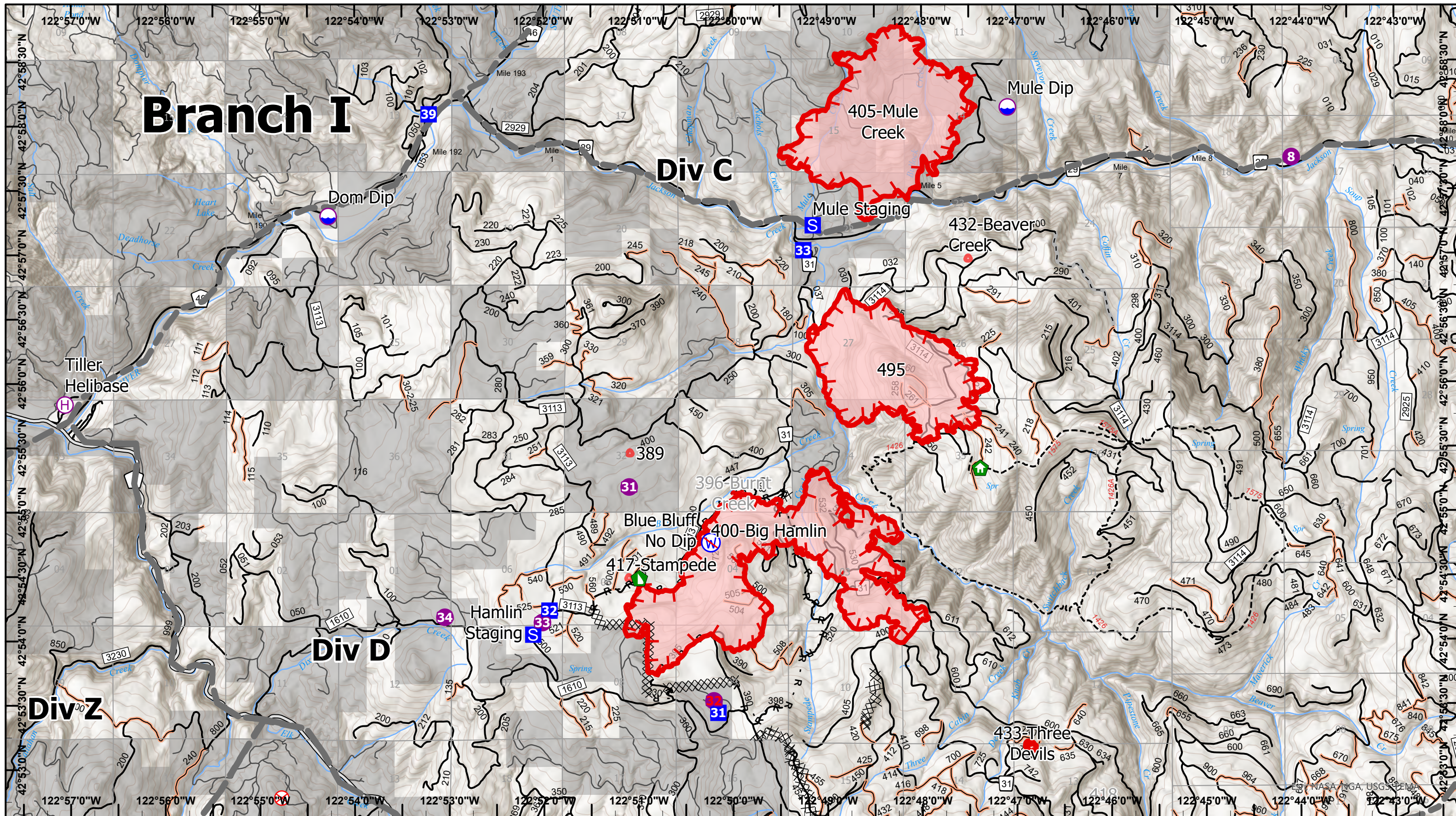
Map Updated 8/10/2021 2202



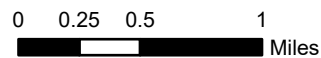
- Helispot
- Open FS Roads
- Closed FS Roads
- Other Roads
- Decommissioned FS Roads
- Trails
- Streams
- Other
- Private/Unknown

Fires that are contained or out





Devils Knob Complex IAP Map



Map Updated 8/10/2021 2202



- Dip Site
- Helispot
- Helibase
- Drop Point
- Staging Area

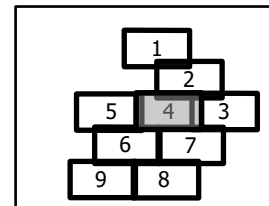
- Fire Origin
- Structure Wrap
- Dozer Push
- Restricted Water Source
- Major Roads

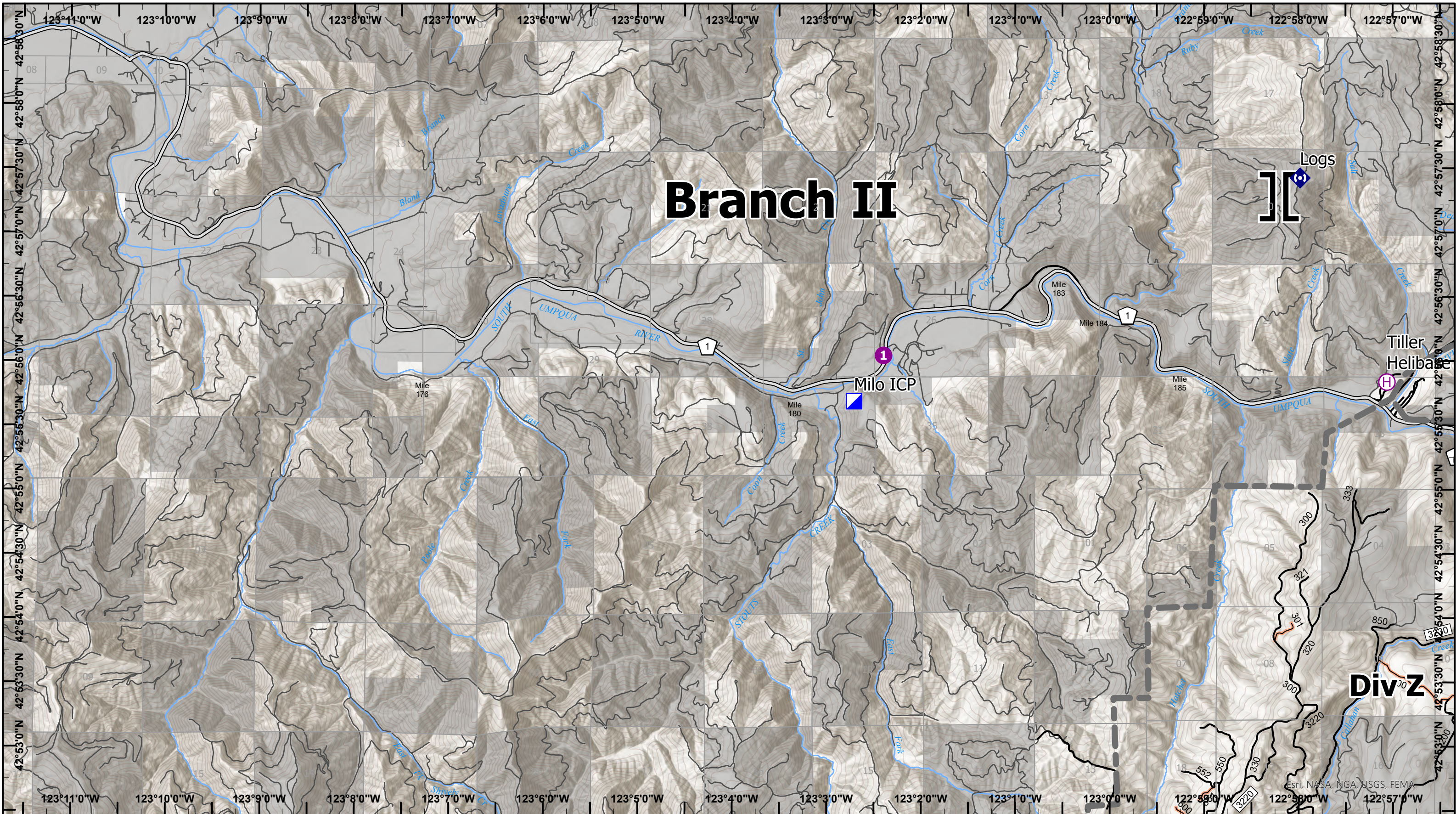
- Open FS Roads
- Closed FS Roads
- Decommissioned FS Roads
- BLM Roads
- Trails

- Streams
- Completed Dozer Line
- Completed Hand Line
- Completed Road as Line
- Other

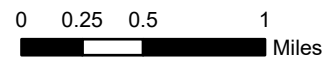
- Fire Edge
- Private/Unknown

Fires that are contained or out





Devils Knob Complex IAP Map



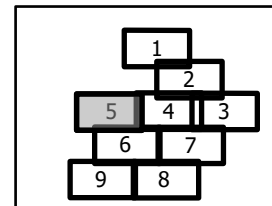
Map Updated 8/10/2021 2202



- Helispot
- H Helibase
- } Branch Break
- Incident Command Post
- ◆ Repeater
- Major Roads
- Open FS Roads
- Closed FS Roads

- BLM Roads
- Trails
- Streams
- Other
- Private/Unknown

Fires that are contained or out

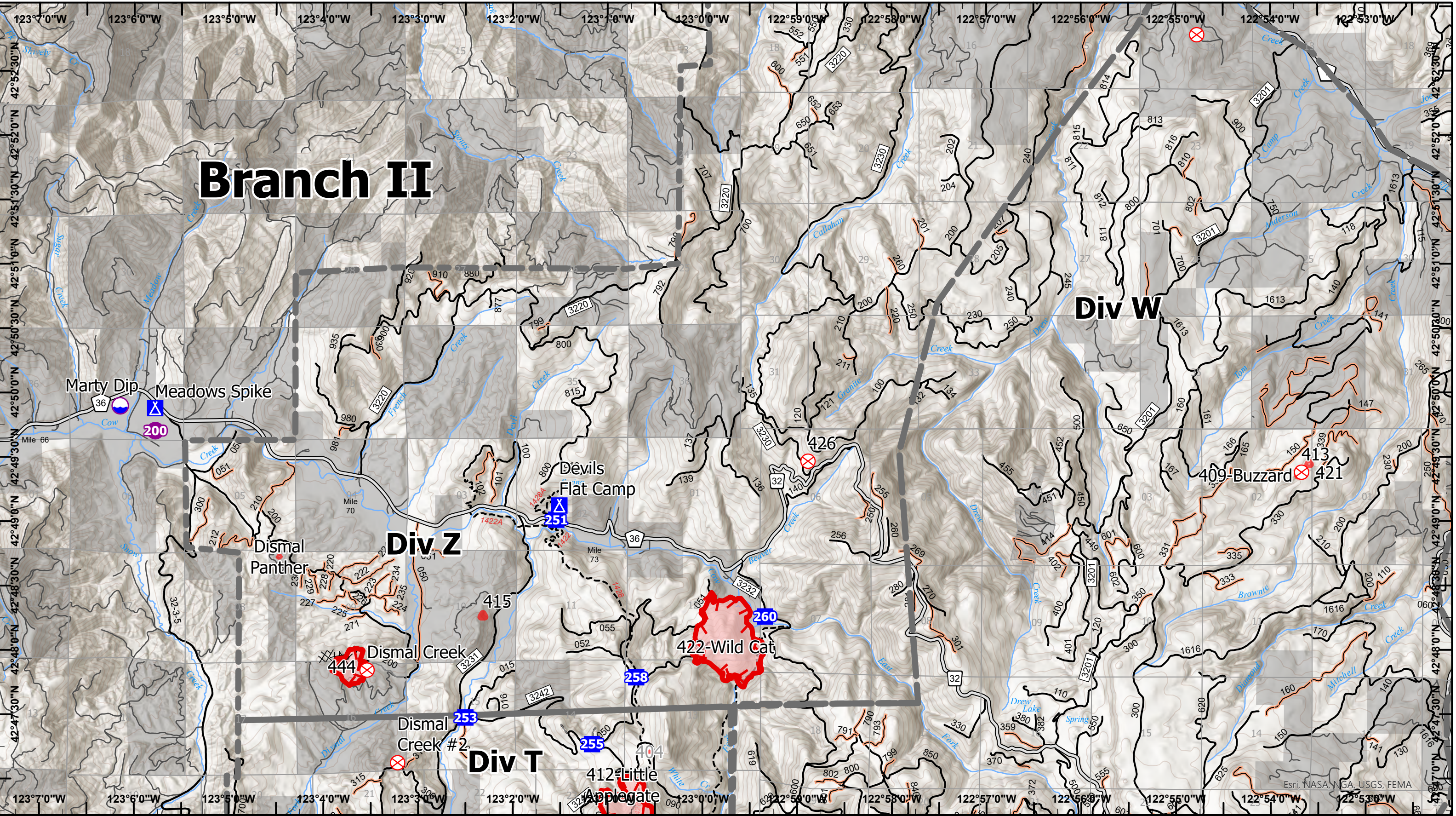


Branch II

Div W

Div Z

Div T



Devils Knob Complex IAP Map

0 0.25 0.5 1 Miles
Map Updated 8/10/2021 2202

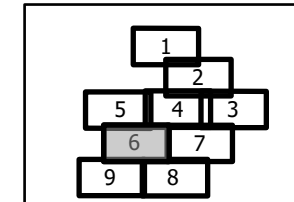


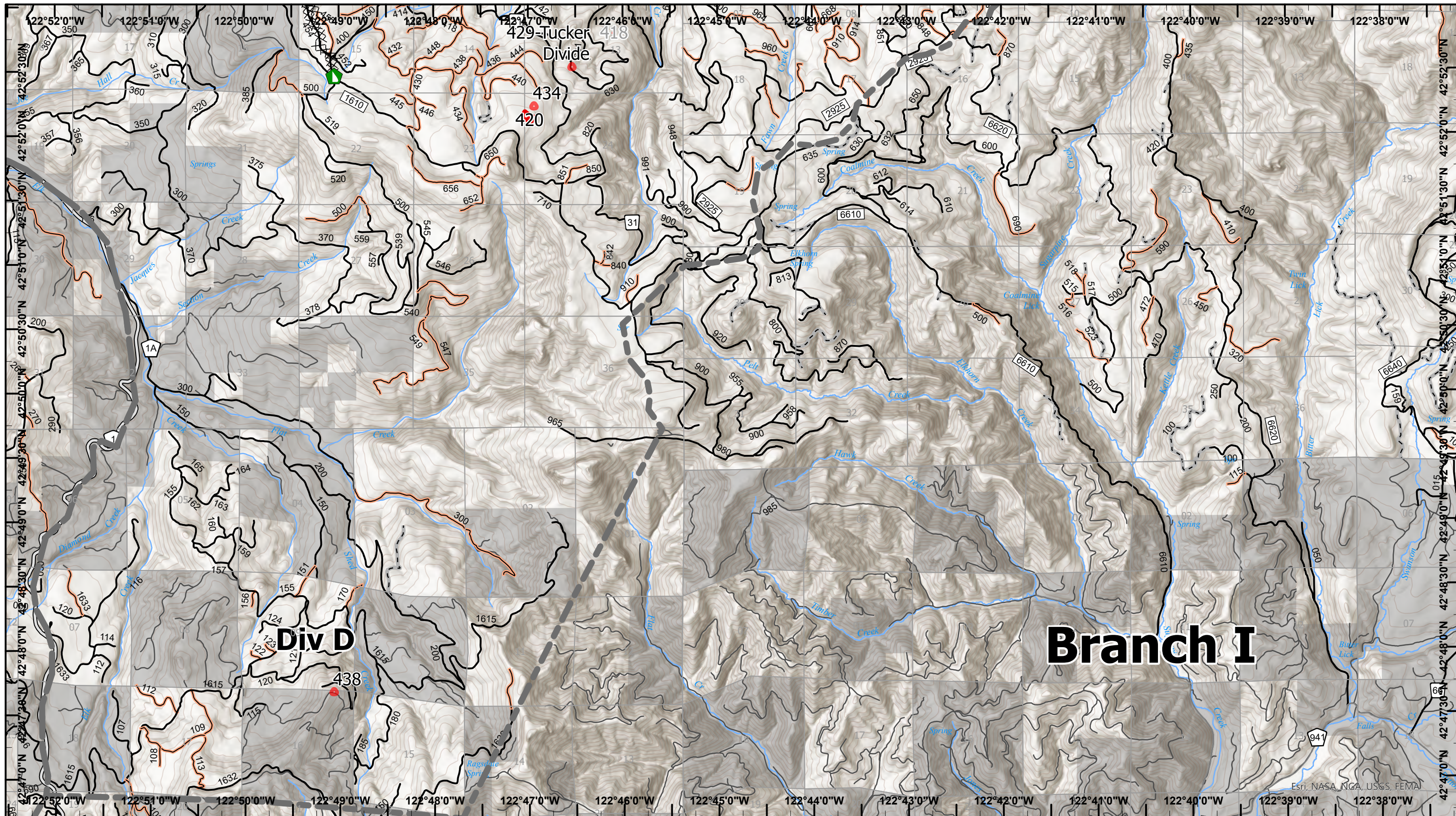
- Dip Site
- Helispot
- Drop Point
- Camp
- Fire Origin

- Major Roads
- Open FS Roads
- Closed FS Roads
- Other Roads
- Decommissioned FS Roads
- BLM Roads
- Trails
- Streams
- Completed Dozer Line
- Completed Hand Line

- Other
- Fire Edge
- Private/Unknown

Fires that are contained or out





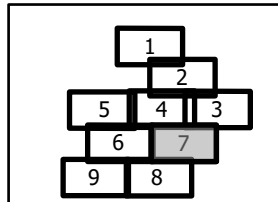
Devils Knob Complex IAP Map

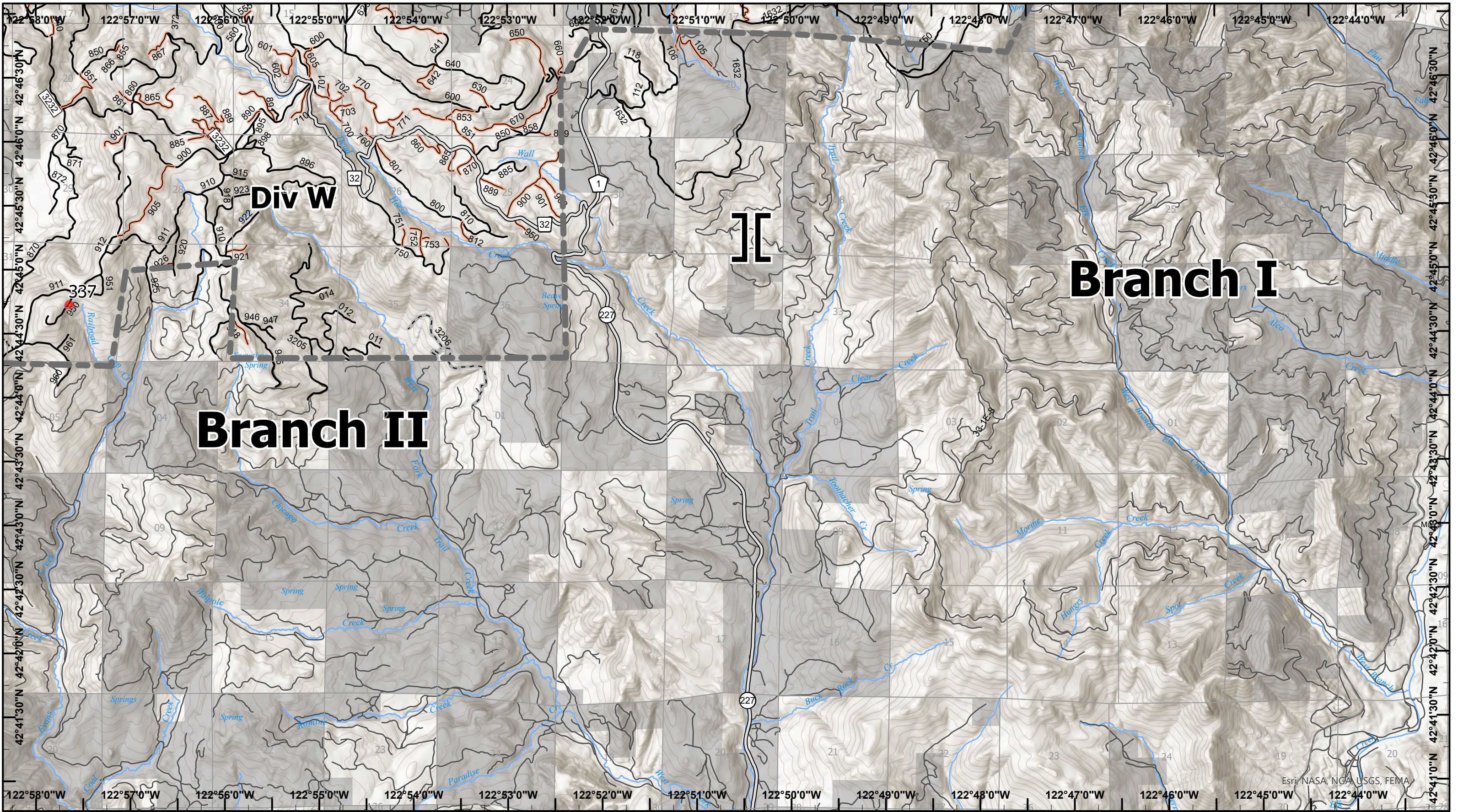
0 0.25 0.5 1 Miles
Map Updated 8/10/2021 2202



- Dozer Push
- Major Roads
- Open FS Roads
- Closed FS Roads
- Other Roads
- Decommissioned FS Roads
- BLM Roads
- Trails
- Streams
- Completed Dozer Line
- Other
- Fire Edge
- Private/Unknown
- Fires that are contained or out

Branch I





**Devils Knob Complex
IAP Map**

0 0.25 0.5 1
Miles

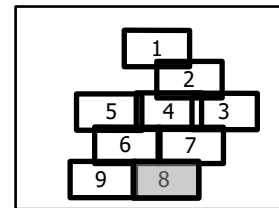
Map Updated 8/10/2021 2202

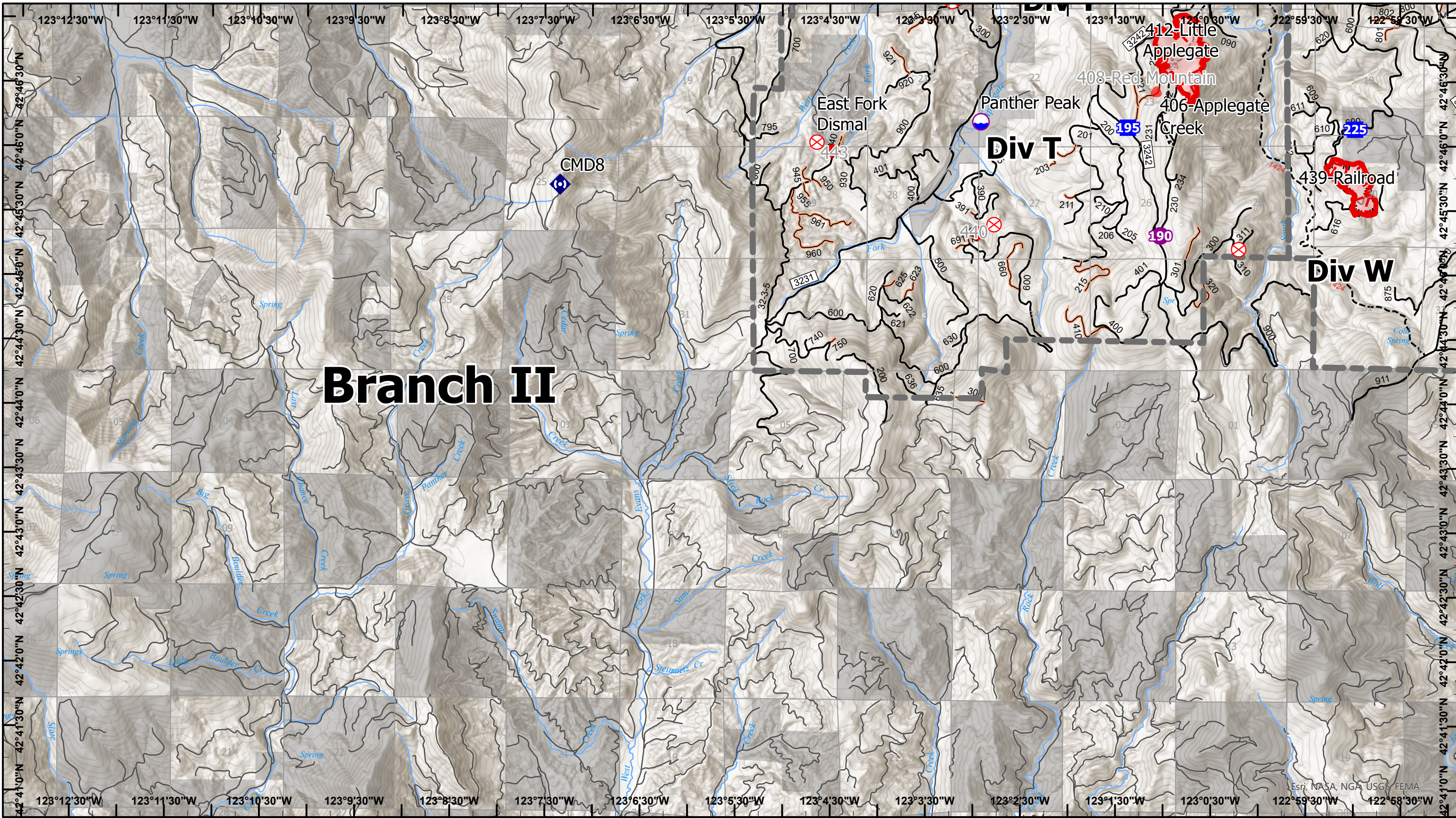


- Branch Break
- Major Roads
- Open FS Roads
- Closed FS Roads

- Other Roads
- Decommissioned FS Roads
- BLM Roads
- Trails
- Streams
- Other
- Private/Unknown

Fires that are contained or out





**Devils Knob Complex
IAP Map**

0 0.25 0.5 1
Miles

Map Updated 8/10/2021 2203



- Dip Site
- Helispot
- Drop Point
- Fire Origin

- Repeater
- Open FS Roads
- Closed FS Roads
- Decommissioned FS Roads

- BLM Roads
- Trails
- Streams
- Completed Mixed Construction Line

- R - Completed Road as Line
- Other
- Fire Edge
- Private/Unknown
- Fires that are contained or out

