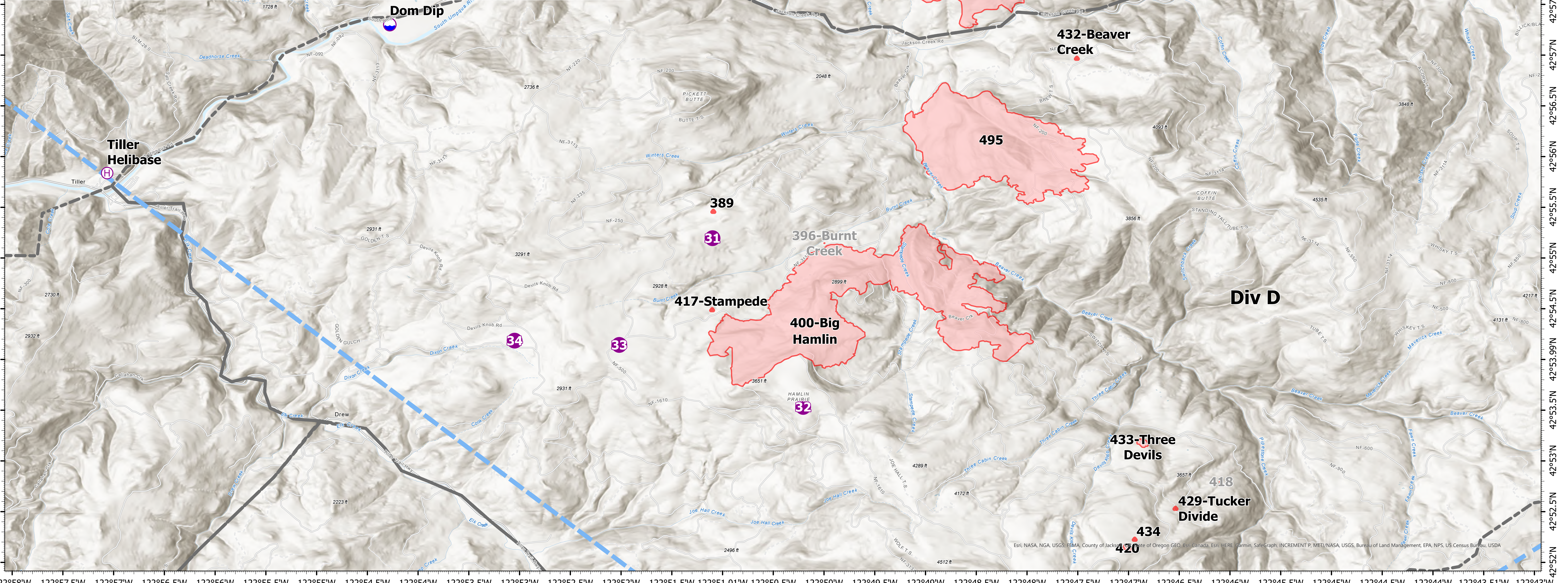


Pilot, Branch I

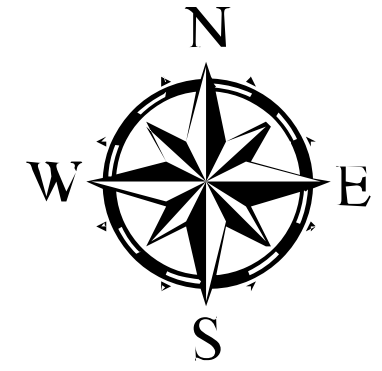
122°58'W 122°57.5'W 122°57'W 122°56.5'W 122°56'W 122°55.5'W 122°55'W 122°54.5'W 122°54'W 122°53.5'W 122°53'W 122°52.5'W 122°52'W 122°51.5'W 122°51.01'W 122°50.5'W 122°50'W 122°49.5'W 122°49'W 122°48.5'W 122°48'W 122°47.5'W 122°47'W 122°46.5'W 122°46'W 122°45.5'W 122°45'W 122°44.5'W 122°44'W 122°43.51'W 122°43'W

Name of Location	Type of Location	Latitude	Longitude	Altitude (PA)	HIGE/HOGE	Other Info
ROSEBURG AIRPORT	AIRPORT TYPE 1	43 14.360' N	122 21.351' W	535 FT	HIGE	35 NM TO TILLER HB
TILLER HELIBASE	HELIBASE TYPE 2	42 55.837' N	122 57.064' W	1,000 FT	HIGE	AT TILLER, OR
1 - MILO FD	HELISPOT TYPE 2	42 56.045' N	123 02.396' W	900 FT	HIGE	POWERLINES
8 - BIG STUMP	HELISPOT TYPE 2	42 57.750' N	122 44.088' W		HIGE	ROCKPIT
31 - NORTH HAMLIN	HELISPOT TYPE 2	42 55.195' N	122 51.098' W	2,680 FT	HIGE	DIV D
32 - HAMLIN MEADOW	HELISPOT TYPE 2	42 53.532' N	122 50.205' W	3,540 FT	HIGE	DIV D
33 - HAMLIN STAGING	HELISPOT TYPE 3	42 54.143' N	122 52.017' W	3,035 FT	HIGE	DIV D
34 - DIXON	HELISPOT TYPE 2	42 54.185' N	122 53.048' W	2,500 FT	HIGE	DIV D
DOM DIP	DIPSITE TYPE1	42 57.300' N	122 54.279' W	1,000 FT	HOGE	DIV C,D TANK
DUMONT DIP	DIPSITE TYPE 2	43 02.237' N	122 48.471' W		HOGE	DIV B,C
RED TOP DIP	DIPSITE TYPE 1	43 04.940' N	122 57.396' W		HOGE	DIV B
BEAVER SWAMP NO DIP	RESTRICTED	43 05.094' N	122 31.123' W		HOGE	** DO NOT USE **
FISH LAKE NO DIP	RESTRICTED	43 04.698' N	122 30.163' W		HOGE	** DO NOT USE **
BLUE BLUFF NO DIP	RESTRICTED	42 54.762' N	122 50.236' W		HOGE	** DO NOT USE **



Devils Knob Complex

OR-UPF-000450
 Fire Perimeter Acres as of 08-09-21 @ 2135
 Total Acres: 4,000
 Map Updated: 8/10/2021 @ 2147



- Dip Site
- Helispot
- H Helibase
- Division Line
- Temporary Flight Restriction

Fires that are contained or out

