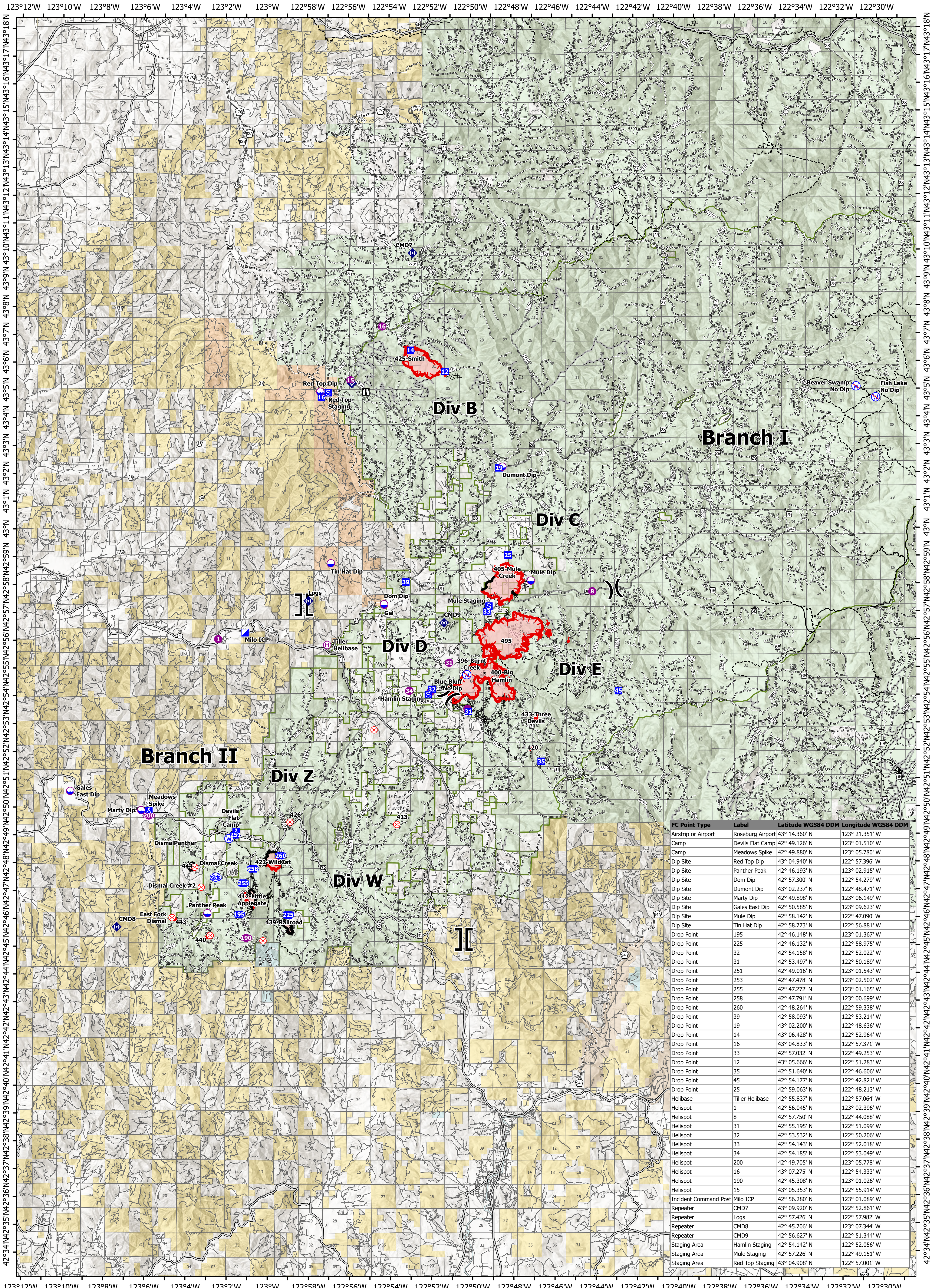


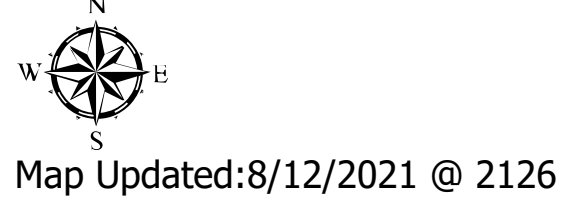
# Commo



FC Point Type	Label	Latitude WGS84 DDM	Longitude WGS84 DDM
Airstrip or Airport	Roseburg Airport	43° 14.360' N	123° 21.351' W
Camp	Devils Flat Camp	42° 49.126' N	123° 01.510' W
Camp	Meadows Spike	42° 49.880' N	123° 05.780' W
Dip Site	Red Top Dip	43° 04.940' N	122° 57.396' W
Dip Site	Panther Peak	42° 46.193' N	123° 02.915' W
Dip Site	Dom Dip	42° 57.300' N	122° 54.279' W
Dip Site	Dumont Dip	43° 02.237' N	122° 48.471' W
Dip Site	Marty Dip	42° 49.898' N	123° 06.149' W
Dip Site	Gales East Dip	42° 50.585' N	123° 09.623' W
Dip Site	Mule Dip	42° 58.142' N	122° 47.090' W
Dip Site	Tin Hat Dip	42° 58.773' N	122° 56.881' W
Drop Point	195	42° 46.148' N	123° 01.367' W
Drop Point	225	42° 46.132' N	122° 58.975' W
Drop Point	32	42° 54.158' N	122° 52.022' W
Drop Point	31	42° 53.497' N	122° 50.189' W
Drop Point	251	42° 49.016' N	123° 01.543' W
Drop Point	253	42° 47.478' N	123° 02.502' W
Drop Point	255	42° 47.272' N	123° 01.165' W
Drop Point	258	42° 47.791' N	123° 00.699' W
Drop Point	260	42° 48.264' N	122° 59.338' W
Drop Point	39	42° 58.093' N	122° 53.214' W
Drop Point	19	43° 02.200' N	122° 48.636' W
Drop Point	14	43° 06.428' N	122° 52.964' W
Drop Point	16	43° 04.833' N	122° 57.371' W
Drop Point	33	42° 57.032' N	122° 49.253' W
Drop Point	12	43° 05.666' N	122° 51.283' W
Drop Point	35	42° 51.640' N	122° 46.606' W
Drop Point	45	42° 54.177' N	122° 42.821' W
Drop Point	25	42° 59.063' N	122° 48.213' W
Helibase	Tiller Helibase	42° 55.837' N	122° 57.064' W
Helispot	1	42° 56.045' N	123° 02.396' W
Helispot	8	42° 57.750' N	122° 44.088' W
Helispot	31	42° 55.195' N	122° 51.099' W
Helispot	32	42° 53.532' N	122° 50.206' W
Helispot	33	42° 54.143' N	122° 52.018' W
Helispot	34	42° 54.185' N	122° 53.049' W
Helispot	200	42° 49.705' N	123° 05.778' W
Helispot	16	43° 07.275' N	122° 54.333' W
Helispot	190	42° 45.308' N	123° 01.026' W
Helispot	15	43° 05.353' N	122° 55.914' W
Incident Command Post	Milo ICP	42° 56.280' N	123° 01.089' W
Repeater	CMD7	43° 09.920' N	122° 52.861' W
Repeater	Logs	42° 57.426' N	122° 57.982' W
Repeater	CMD8	42° 45.706' N	123° 07.344' W
Repeater	CMD9	42° 56.627' N	122° 51.344' W
Staging Area	Hamlin Staging	42° 54.142' N	122° 52.056' W
Staging Area	Mule Staging	42° 57.226' N	122° 49.151' W
Staging Area	Red Top Staging	43° 04.908' N	122° 57.001' W

## Devils Knob Complex OR-UPF-000450

Fire Perimeter Acres as of 08-11-21 @ 2011  
Total Acres: 5,793



- Dip Site
- Drop Point
- ⊕ Water Source
- Contained Line
- Bureau of Land Management
- Mobile Retardant Base
- Ⓜ Camp
- ⊖ Restricted Water Source
- Major\_Roads
- U.S. Forest Service
- Helispot
- Ⓜ Staging Area
- ⊗ Completed Dozer Line
- Open FS Roads
- Bureau of Indian Affairs
- Helibase
- Ⓜ Lookout
- Completed Fuel Break
- Closed FS Roads
- Other Federal
- ⊗ Division Break
- Ⓜ Fire Origin
- Completed Hand Line
- Decom\_FS\_Roads
- State
- Ⓜ Branch Break
- Ⓜ Internet Access
- Completed Road as Line
- BLM\_Roads
- Private/Unknown
- Incident Command Post
- Ⓜ Repeater
- Trails
- Tiller Ranger District



Map Updated: 8/12/2021 @ 2126

0 1.25 2.5 5 Miles