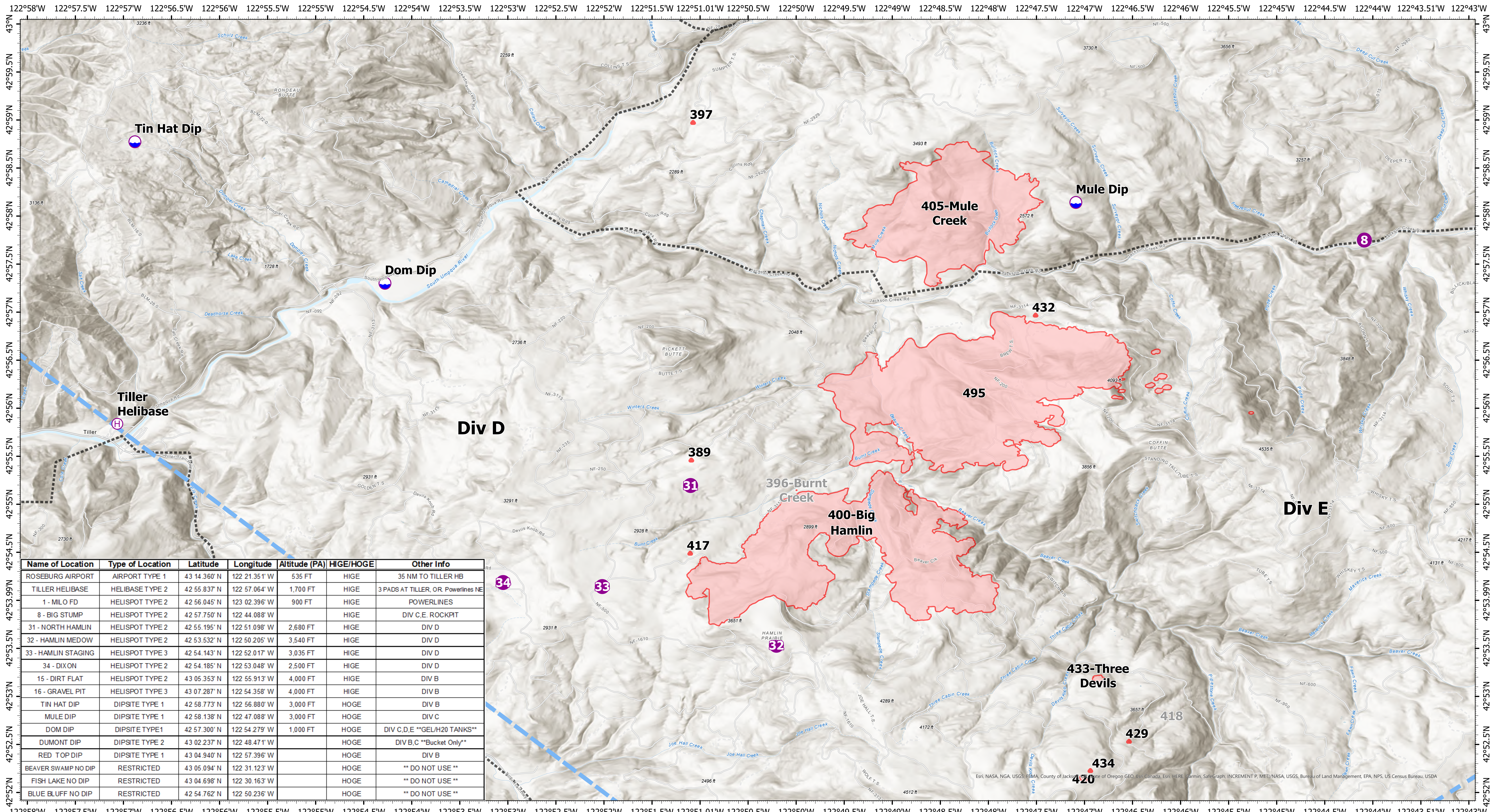


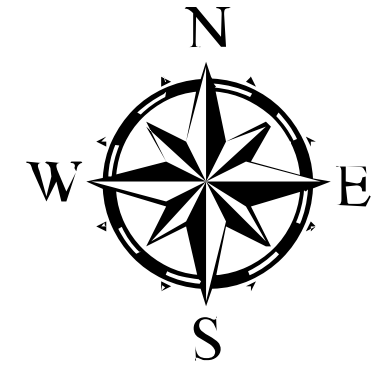
Pilot, Branch I



Name of Location	Type of Location	Latitude	Longitude	Altitude (PA)	HIGE/HOGE	Other Info
ROSEBURG AIRPORT	AIRPORT TYPE 1	43 14 36.0' N	122 21.351' W	535 FT	HIGE	35 NM TO TILLER HB
TILLER HELIBASE	HELIBASE TYPE 2	42 55 837' N	122 57 064' W	1,700 FT	HIGE	3 PADS AT TILLER, OR Powerlines NE
1 - MILO FD	HELISPOT TYPE 2	42 56 045' N	123 02 396' W	900 FT	HIGE	POWERLINES
8 - BIG STUMP	HELISPOT TYPE 2	42 57 750' N	122 44 088' W		HIGE	DIV C,E ROCKPIT
31 - NORTH HAMLIN	HELISPOT TYPE 2	42 55 195' N	122 51 098' W	2,680 FT	HIGE	DIV D
32 - HAMLIN MADOW	HELISPOT TYPE 2	42 53 532' N	122 50 205' W	3,540 FT	HIGE	DIV D
33 - HAMLIN STAGING	HELISPOT TYPE 3	42 54 143' N	122 52 017' W	3,035 FT	HIGE	DIV D
34 - DIXON	HELISPOT TYPE 2	42 54 185' N	122 53 048' W	2,500 FT	HIGE	DIV D
15 - DIRT FLAT	HELISPOT TYPE 2	43 05 353' N	122 55 913' W	4,000 FT	HIGE	DIV B
16 - GRAVEL PIT	HELISPOT TYPE 3	43 07 287' N	122 54 358' W	4,000 FT	HIGE	DIV B
TIN HAT DIP	DIPSITE TYPE 1	42 58 773' N	122 56 880' W	3,000 FT	HOGE	DIV B
MULE DIP	DIPSITE TYPE 1	42 58 138' N	122 47 088' W	3,000 FT	HOGE	DIV C
DOM DIP	DIPSITE TYPE 1	42 57 300' N	122 54 279' W	1,000 FT	HOGE	DIV C,D,E **GEL/H2O TANKS**
DUMONT DIP	DIPSITE TYPE 2	43 02 237' N	122 48 471' W		HOGE	DIV B,C **Bucket Only**
RED TOP DIP	DIPSITE TYPE 1	43 04 940' N	122 57 396' W		HOGE	DIV B
BEAVER SWAMP NO DIP	RESTRICTED	43 05 094' N	122 31 123' W		HOGE	** DO NOT USE **
FISH LAKE NO DIP	RESTRICTED	43 04 698' N	122 30 163' W		HOGE	** DO NOT USE **
BLUE BLUFF NO DIP	RESTRICTED	42 54 762' N	122 50 236' W		HOGE	** DO NOT USE **

Devils Knob Complex

OR-UPF-000450
 Fire Perimeter Acres as of 08-11-21 @ 2011
 Total Acres: 5,793
 Map Updated: 8/12/2021 @ 2120



- Dip Site
 - Helispot
 - H Helibase
 - Temporary Flight Restriction
- Fires that are contained or out

