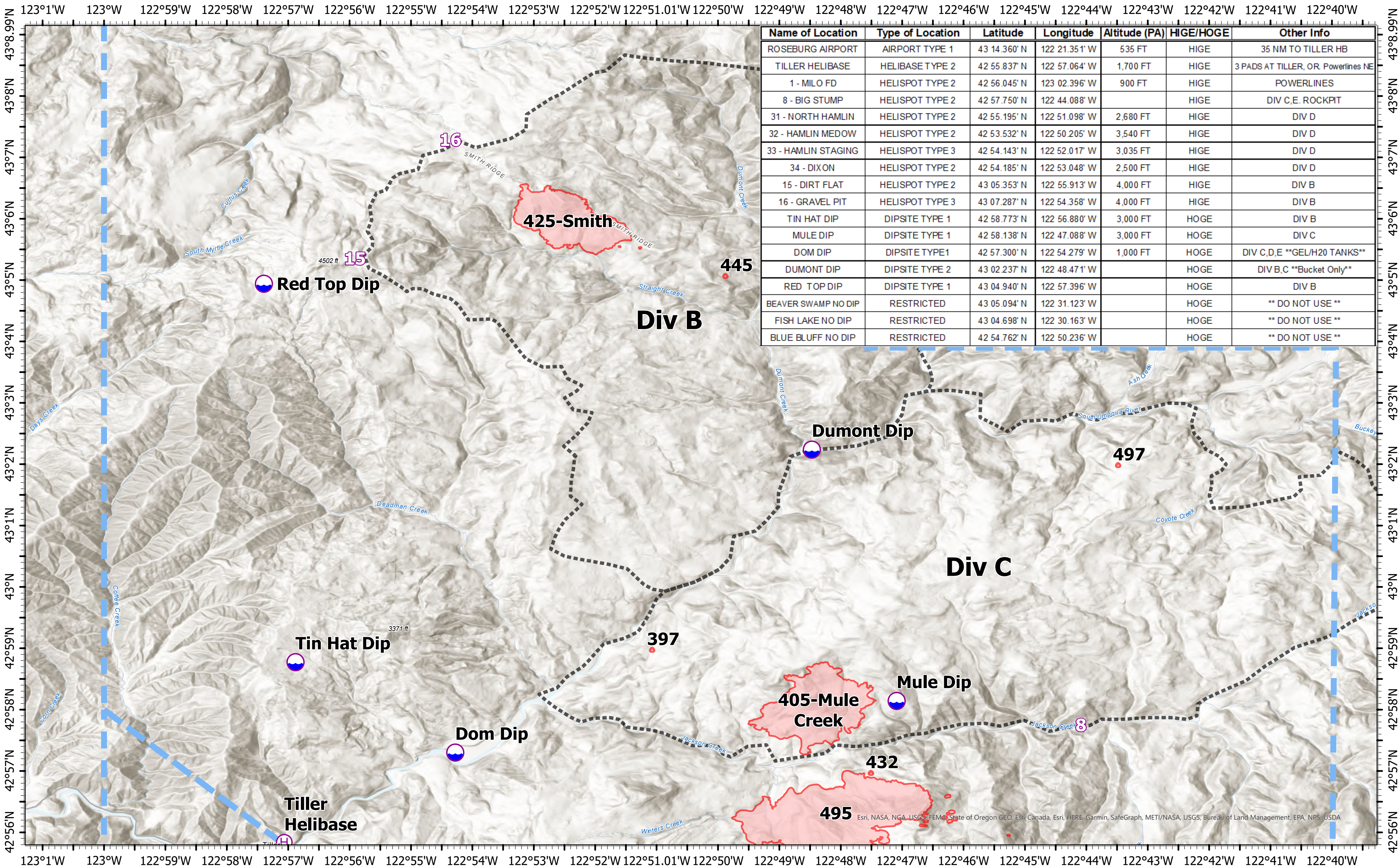


Pilot, Branch I Division B, C



Name of Location	Type of Location	Latitude	Longitude	Altitude (PA)	HIGE/HOGE	Other Info
ROSEBURG AIRPORT	AIRPORT TYPE 1	43 14.360' N	122 21.351' W	535 FT	HIGE	35 NM TO TILLER HB
TILLER HELIBASE	HELIBASE TYPE 2	42 55.837' N	122 57.064' W	1,700 FT	HIGE	3 PADS AT TILLER, OR Powerlines NE
1 - MILO FD	HELISPOT TYPE 2	42 56.045' N	123 02.396' W	900 FT	HIGE	POWERLINES
8 - BIG STUMP	HELISPOT TYPE 2	42 57.750' N	122 44.088' W		HIGE	DIV C.E. ROCKPIT
31 - NORTH HAMLIN	HELISPOT TYPE 2	42 55.195' N	122 51.098' W	2,680 FT	HIGE	DIV D
32 - HAMLIN MADOW	HELISPOT TYPE 2	42 53.532' N	122 50.205' W	3,540 FT	HIGE	DIV D
33 - HAMLIN STAGING	HELISPOT TYPE 3	42 54.143' N	122 52.017' W	3,035 FT	HIGE	DIV D
34 - DIXON	HELISPOT TYPE 2	42 54.185' N	122 53.048' W	2,500 FT	HIGE	DIV D
15 - DIRT FLAT	HELISPOT TYPE 2	43 05.353' N	122 55.913' W	4,000 FT	HIGE	DIV B
16 - GRAVEL PIT	HELISPOT TYPE 3	43 07.287' N	122 54.358' W	4,000 FT	HIGE	DIV B
TIN HAT DIP	DIPSITE TYPE 1	42 58.773' N	122 56.880' W	3,000 FT	HOGE	DIV B
MULE DIP	DIPSITE TYPE 1	42 58.138' N	122 47.088' W	3,000 FT	HOGE	DIV C
DOM DIP	DIPSITE TYPE1	42 57.300' N	122 54.279' W	1,000 FT	HOGE	DIV C,D,E **GEL/H2O TANKS**
DUMONT DIP	DIPSITE TYPE 2	43 02.237' N	122 48.471' W		HOGE	DIV B,C **Bucket Only**
RED TOP DIP	DIPSITE TYPE 1	43 04.940' N	122 57.396' W		HOGE	DIV B
BEAVER SWAMP NO DIP	RESTRICTED	43 05.094' N	122 31.123' W		HOGE	** DO NOT USE **
FISH LAKE NO DIP	RESTRICTED	43 04.698' N	122 30.163' W		HOGE	** DO NOT USE **
BLUE BLUFF NO DIP	RESTRICTED	42 54.762' N	122 50.236' W		HOGE	** DO NOT USE **

Devils Knob Complex

OR-UPF-000450

Fire Perimeter Acres as of 08-11-21 @ 2011
Total Acres: 5,793

Map Updated:8/12/2021 @ 2122

- Dip Site
- Helispot
- Helibase
- Temporary Flight Restriction

Fires that are contained or out

