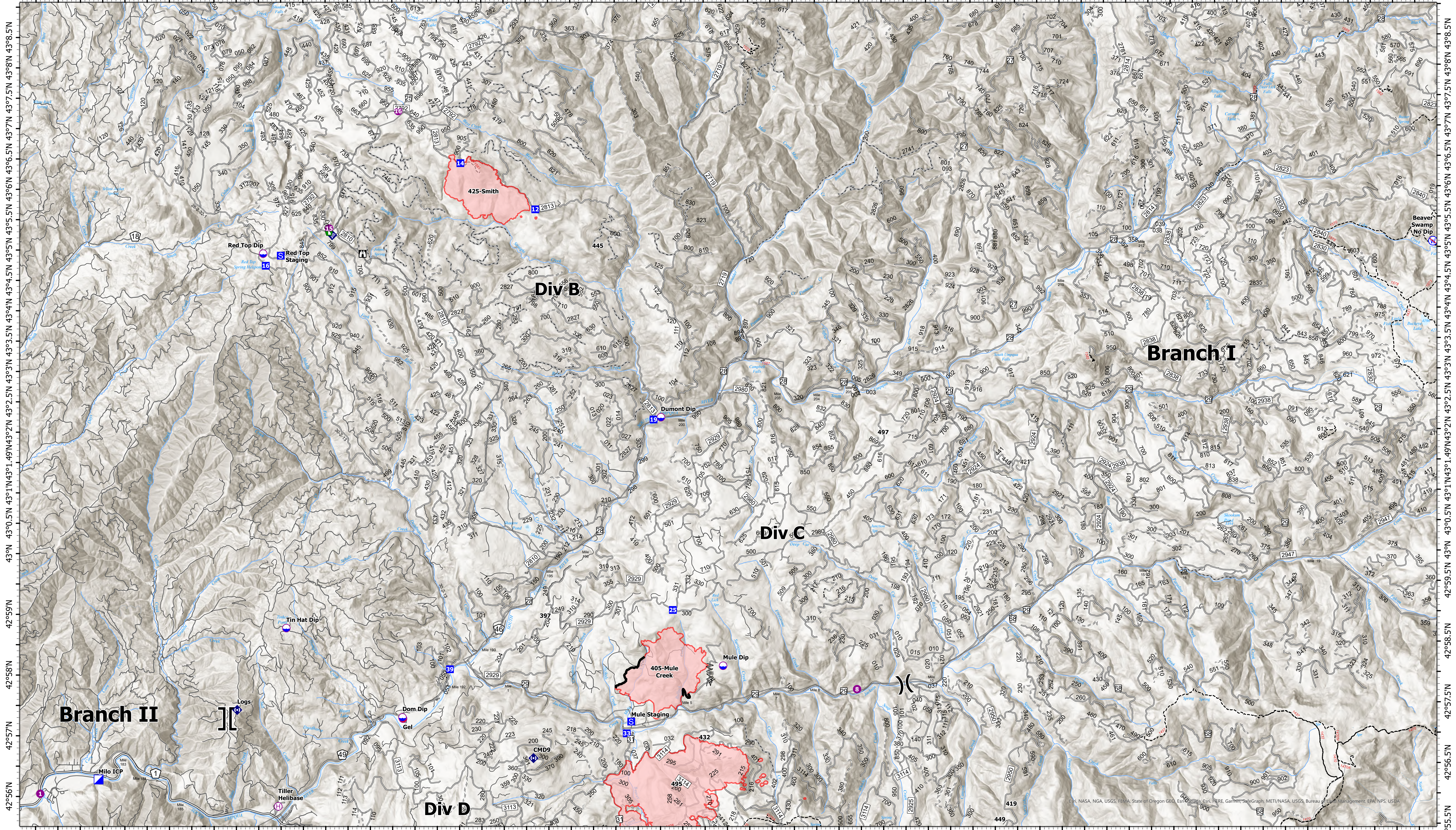


Transportation, North

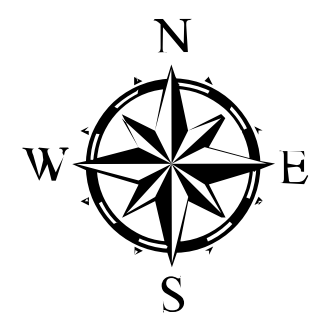
123°2.5'W 123°1.5'W 123°0.5'W 122°59.5'W 122°58.5'W 122°57.5'W 122°56.5'W 122°55.5'W 122°54.5'W 122°53.5'W 122°52.5'W 122°51.5'W 122°50.5'W 122°49.5'W 122°48.5'W 122°47.5'W 122°46.5'W 122°45.5'W 122°44.5'W 122°43.5'W 122°42.5'W 122°41.5'W 122°40.5'W 122°39.5'W 122°38.5'W 122°37.5'W 122°36.5'W 122°35.5'W 122°34.5'W 122°33.5'W 122°32.5'W 122°31.5'W



123°2.5'W 123°1.5'W 123°0.5'W 122°59.5'W 122°58.5'W 122°57.5'W 122°56.5'W 122°55.5'W 122°54.5'W 122°53.5'W 122°52.5'W 122°51.5'W 122°50.5'W 122°49.5'W 122°48.5'W 122°47.5'W 122°46.5'W 122°45.5'W 122°44.5'W 122°43.5'W 122°42.5'W 122°41.5'W 122°40.5'W 122°39.5'W 122°38.5'W 122°37.5'W 122°36.5'W 122°35.5'W 122°34.5'W 122°33.5'W 122°32.5'W 122°31.5'W

Devils Knob Complex

OR-UPF-000450
 Fire Perimeter Acres as of 08-11-21 @ 2011
 Total Acres: 5,793
 Map Updated: 8/12/2021 @ 2133



- Dip Site
- Mobile Retardant Base
- Helispot
- Helibase
- ⌘ Division Break
- ⌘ Branch Break
- Incident Command Post
- Drop Point
- Staging Area
- Lookout
- ◆ Dozer Push
- ◆ Internet Access
- ◆ Repeater
- ◆ Restricted Water Source
- Major Roads
- BLM Roads
- Open FS Roads
- - - Closed FS Roads
- - - Decommissioned FS Roads
- - - Trails
- Streams

