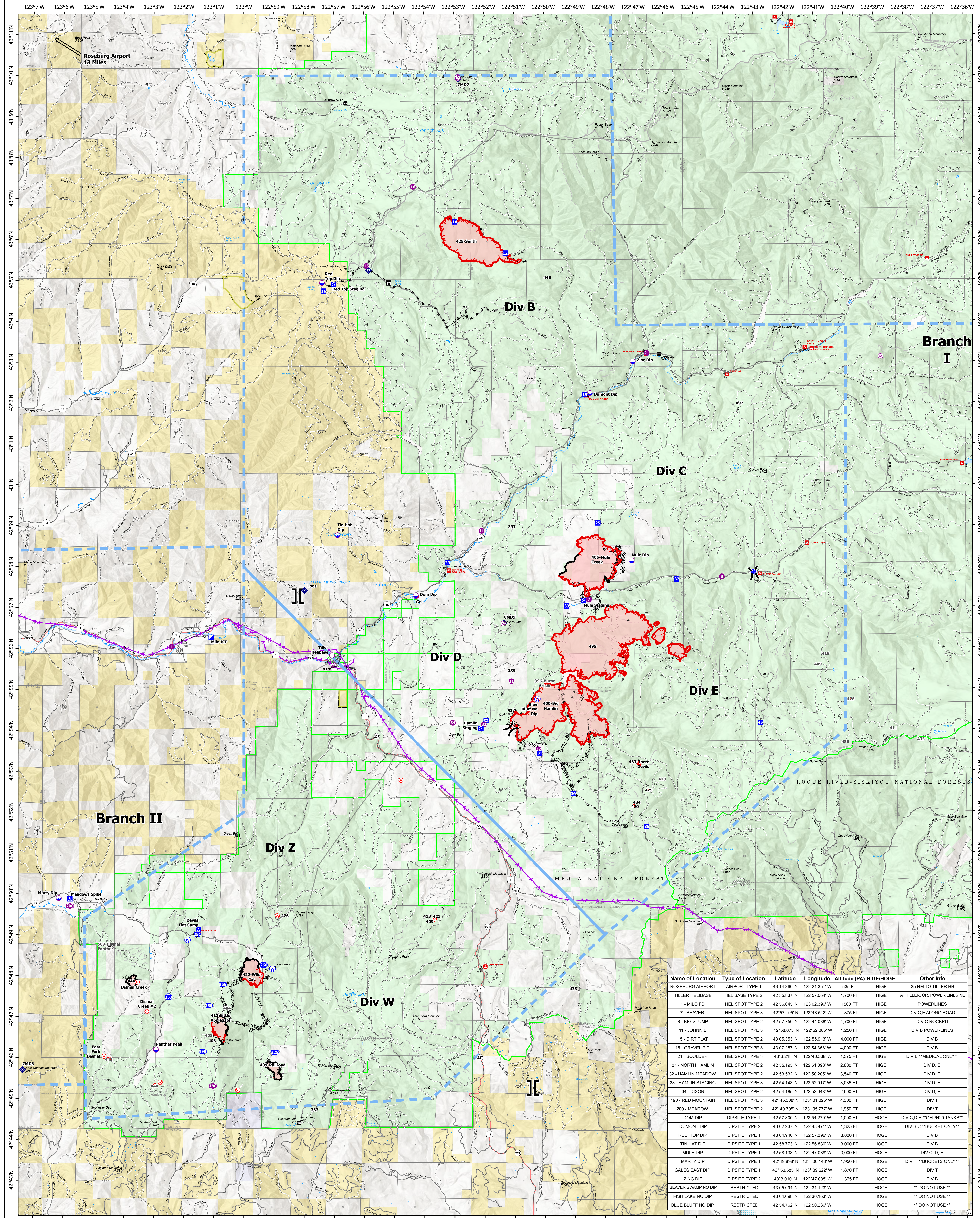


Air Operations

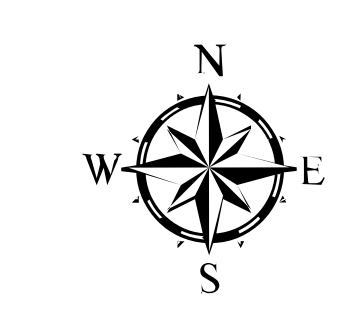


Name of Location	Type of Location	Latitude	Longitude	Altitude (PA)	HIGE/HOGE	Other Info
ROSEBURG AIRPORT	AIRPORT TYPE 1	43 14.360° N	122 21.351° W	535 FT	HIGE	35 NM TO TILLER HB
TILLER HELIBASE	HELIBASE TYPE 2	42 55.837° N	122 57.064° W	1,700 FT	HIGE	AT TILLER, OR. POWER LINES NE
1 - MILO FD	HELISPOT TYPE 2	42 56.045° N	123 02.396° W	1,500 FT	HIGE	POWERLINES
7 - BEAVER	HELISPOT TYPE 3	42 57.195° N	122 48.513° W	1,375 FT	HIGE	DIV C.E ALONG ROAD
8 - BIG STUMP	HELISPOT TYPE 2	42 57.750° N	122 44.088° W	1,700 FT	HIGE	DIV C ROCKPIT
11 - JOHNNIE	HELISPOT TYPE 3	42 58.875° N	122 52.085° W	1,250 FT	HIGE	DIV B POWERLINES
15 - DIRT FLAT	HELISPOT TYPE 2	43 05.353° N	122 55.913° W	4,000 FT	HIGE	DIV B
16 - GRAVEL PIT	HELISPOT TYPE 3	43 07.287° N	122 54.358° W	4,000 FT	HIGE	DIV B
21 - BOULDER	HELISPOT TYPE 3	43 3.218° N	122 46.568° W	1,375 FT	HIGE	DIV B **MEDICAL ONLY**
31 - NORTH HAMLIN	HELISPOT TYPE 2	42 55.195° N	122 51.098° W	2,680 FT	HIGE	DIV D, E
32 - HAMLIN MEADOW	HELISPOT TYPE 2	42 53.532° N	122 50.205° W	3,540 FT	HIGE	DIV D, E
33 - HAMLIN STAGING	HELISPOT TYPE 3	42 54.143° N	122 52.017° W	3,035 FT	HIGE	DIV D, E
34 - DIXON	HELISPOT TYPE 2	42 54.185° N	122 53.048° W	2,500 FT	HIGE	DIV D, E
190 - RED MOUNTAIN	HELISPOT TYPE 2	42 45.308° N	123 01.025° W	4,300 FT	HIGE	DIV T
200 - MEADOW	HELISPOT TYPE 2	42 49.705° N	123 05.777° W	1,950 FT	HIGE	DIV T
DOM DIP	DIPSITE TYPE 1	42 57.300° N	122 54.279° W	1,000 FT	HOGE	DIV C,D,E **GEL/H2O TANKS**
DUMONT DIP	DIPSITE TYPE 2	43 02.237° N	122 48.471° W	1,325 FT	HOGE	DIV B,C **BUCKET ONLY**
RED TOP DIP	DIPSITE TYPE 1	43 04.940° N	122 57.396° W	3,800 FT	HOGE	DIV B
TIN HAT DIP	DIPSITE TYPE 1	42 58.773° N	122 56.880° W	3,000 FT	HOGE	DIV B
MULE DIP	DIPSITE TYPE 1	42 58.138° N	122 47.088° W	3,000 FT	HOGE	DIV C, D, E
MARTY DIP	DIPSITE TYPE 1	42 49.898° N	123 06.148° W	1,950 FT	HOGE	DIV T **BUCKETS ONLY**
GALES EAST DIP	DIPSITE TYPE 1	42 50.585° N	123 09.622° W	1,870 FT	HOGE	DIV T
ZINC DIP	DIPSITE TYPE 2	43 03.010° N	122 47.035° W	1,375 FT	HOGE	DIV B
BEAVER SWAMP NO DIP	RESTRICTED	43 05.094° N	122 31.123° W		HOGE	** DO NOT USE **
FISH LAKE NO DIP	RESTRICTED	43 04.698° N	122 30.163° W		HOGE	** DO NOT USE **
BLUE BLUFF NO DIP	RESTRICTED	42 54.762° N	122 50.236° W		HOGE	** DO NOT USE **

Devils Knob Complex

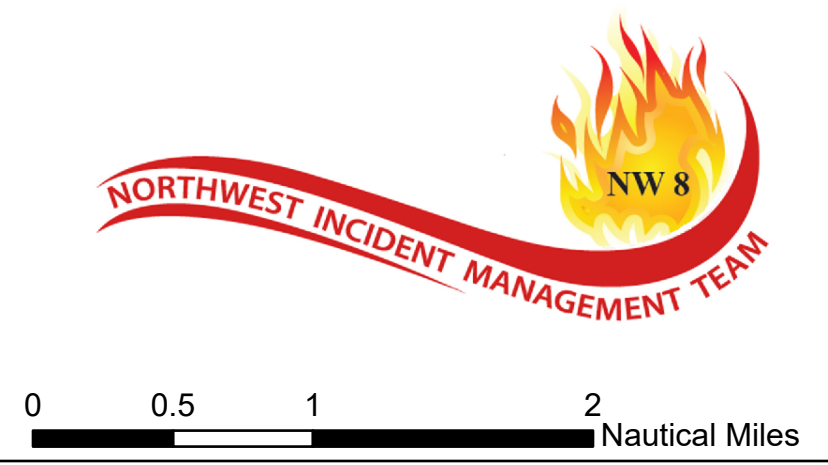
OR-UPF-000450
August 14, 2021
6606ac.as of 08-12-21 © 2011

Map Updated 8/13/2021 @ 2:28



- Helispot
- ⊙ Aerial Hazard
- Dip Site
- ⊖ Mobile Retardant Base
- ⊕ Helibase
- ⊘ Division Break
- ⊔ Branch Break
- ⊔ Incident Command Post
- ⊔ Drop Point
- ⊔ Camp
- ⊔ Staging Area
- ⊔ Lookout
- ⊔ Fire Origin
- ⊔ Internet Access
- ⊔ Repeater
- ⊔ Water Source
- ⊔ Restricted Water Source
- ⊔ Completed Dozer Line
- ⊔ Completed Fuel Break
- ⊔ Completed Hand Line
- ⊔ Completed Mixed Construction Line
- ⊔ Completed Road as Line
- ⊔ Planned Mixed Construction Line
- ⊔ Aerial Hazard
- ⊔ Temporary Flight Restriction
- ⊔ Fire Edge
- ⊔ Contained Line

440 - Fires that are contained or out



0 0.5 1 2 Nautical Miles