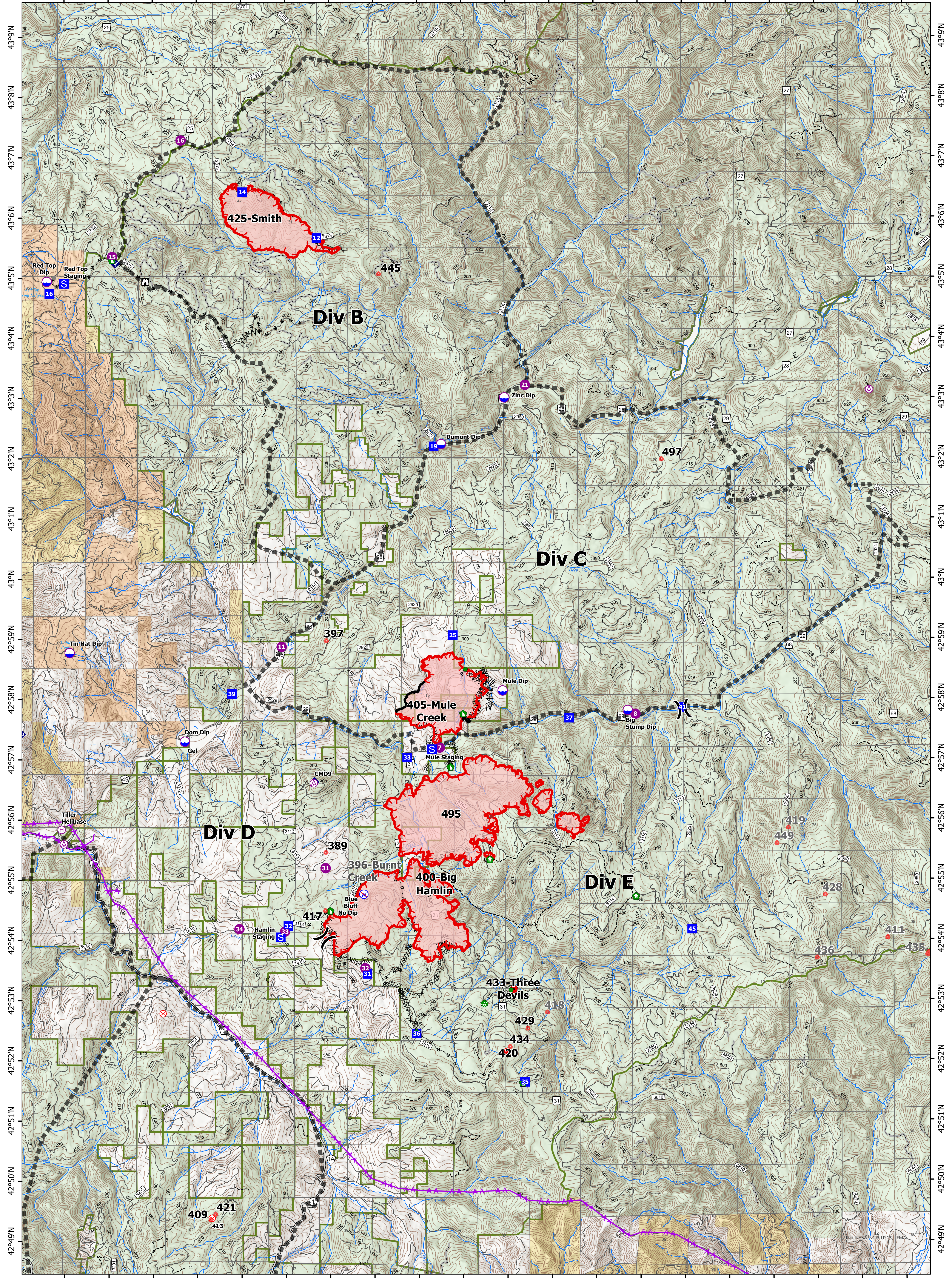


Branch I

122°57'W 122°56'W 122°55'W 122°54'W 122°53'W 122°52'W 122°51'W 122°50'W 122°49'W 122°48'W 122°47'W 122°46'W 122°45'W 122°44'W 122°43'W 122°42'W 122°41'W 122°40'W 122°39'W 122°38'W



122°57'W 122°56'W 122°55'W 122°54'W 122°53'W 122°52'W 122°51'W 122°50'W 122°49'W 122°48'W 122°47'W 122°46'W 122°45'W 122°44'W 122°43'W 122°42'W 122°41'W 122°40'W 122°39'W 122°38'W

Devils Knob Complex

OR-UPF-000450

Fire Perimeter Acres as of 08-12-21 @ 2011
Total Acres: 6606



Map Updated: 8/13/2021 @ 2121

- | | | | | |
|--|--|--|---|---|
| <ul style="list-style-type: none"> Aerial Hazard Dip Site Mobile Retardant Base Helispot Helibase Division Break Branch Break Drop Point | <ul style="list-style-type: none"> Staging Area Lookout Fire Origin Other Water Development or Draft Site Structure Wrap Repair Point Dozer Push | <ul style="list-style-type: none"> Internet Access Repeater Restricted Water Source Completed Dozer Line Completed Fuel Break Completed Hand Line Completed Mixed Construction Line Completed Road as Line | <ul style="list-style-type: none"> Aerial Hazard Fire Edge Contained Line Major Roads Open FS Roads Closed FS Roads Decommissioned FS Roads | <ul style="list-style-type: none"> Trails Tiller Ranger District Bureau of Land Management U.S. Forest Service Bureau of Indian Affairs Private/Unknown |
|--|--|--|---|---|



0 0.5 1 2 Miles