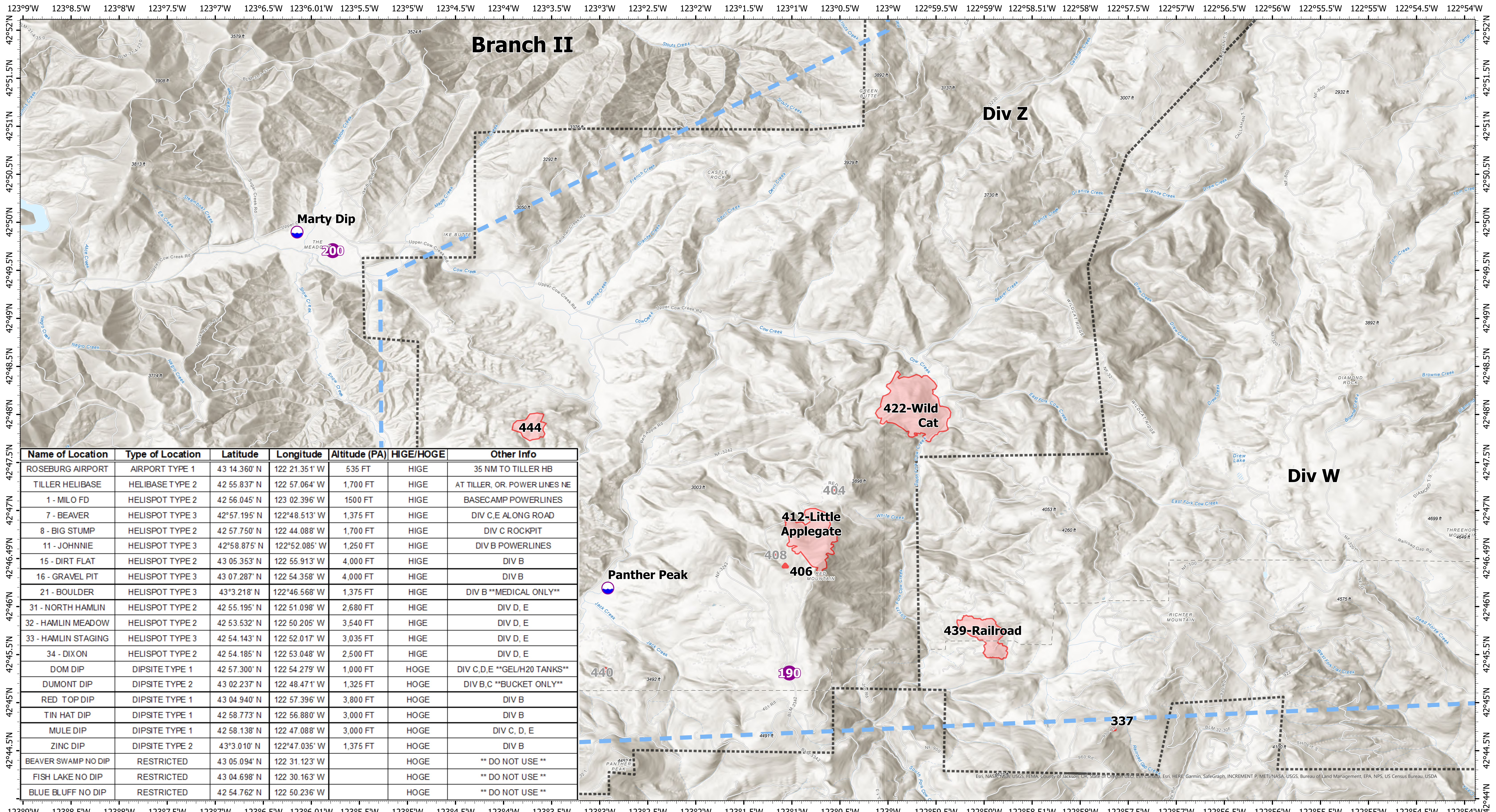


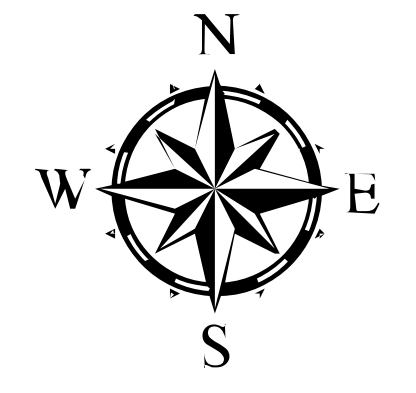
Pilot, Branch II



Name of Location	Type of Location	Latitude	Longitude	Altitude (PA)	HIGE/HOGE	Other Info
ROSEBURG AIRPORT	AIRPORT TYPE 1	43 14.360' N	122 21.351' W	535 FT	HIGE	35 NM TO TILLER HB
TILLER HELIBASE	HELIBASE TYPE 2	42 55.837' N	122 57.064' W	1,700 FT	HIGE	AT TILLER, OR. POWER LINES NE
1 - MILO FD	HELISLOT TYPE 2	42 56.045' N	123 02.396' W	1500 FT	HIGE	BASECAMP POWERLINES
7 - BEAVER	HELISLOT TYPE 3	42°57.195' N	122°48.513' W	1,375 FT	HIGE	DIV C, E ALONG ROAD
8 - BIG STUMP	HELISLOT TYPE 2	42 57.750' N	122 44.088' W	1,700 FT	HIGE	DIV C ROCKPIT
11 - JOHNNIE	HELISLOT TYPE 3	42°58.875' N	122°52.085' W	1,250 FT	HIGE	DIV B POWERLINES
15 - DIRT FLAT	HELISLOT TYPE 2	43 05.353' N	122 55.913' W	4,000 FT	HIGE	DIV B
16 - GRAVEL PIT	HELISLOT TYPE 3	43 07.287' N	122 54.358' W	4,000 FT	HIGE	DIV B
21 - BOULDER	HELISLOT TYPE 3	43°3.218' N	122°46.568' W	1,375 FT	HIGE	DIV B **MEDICAL ONLY**
31 - NORTH HAMLIN	HELISLOT TYPE 2	42 55.195' N	122 51.098' W	2,680 FT	HIGE	DIV D, E
32 - HAMLIN MEADOW	HELISLOT TYPE 2	42 53.532' N	122 50.205' W	3,540 FT	HIGE	DIV D, E
33 - HAMLIN STAGING	HELISLOT TYPE 3	42 54.143' N	122 52.017' W	3,035 FT	HIGE	DIV D, E
34 - DIXON	HELISLOT TYPE 2	42 54.185' N	122 53.048' W	2,500 FT	HIGE	DIV D, E
DOM DIP	DIPSITE TYPE 1	42 57.300' N	122 54.279' W	1,000 FT	HOGE	DIV C, D, E **GEL/H2O TANKS**
DUMONT DIP	DIPSITE TYPE 2	43 02.237' N	122 48.471' W	1,325 FT	HOGE	DIV B, C **BUCKET ONLY**
RED TOP DIP	DIPSITE TYPE 1	43 04.940' N	122 57.396' W	3,800 FT	HOGE	DIV B
TIN HAT DIP	DIPSITE TYPE 1	42 58.773' N	122 56.880' W	3,000 FT	HOGE	DIV B
MULE DIP	DIPSITE TYPE 1	42 58.138' N	122 47.088' W	3,000 FT	HOGE	DIV C, D, E
ZINC DIP	DIPSITE TYPE 2	43°3.010' N	122°47.035' W	1,375 FT	HOGE	DIV B
BEAVER SWAMP NO DIP	RESTRICTED	43 05.094' N	122 31.123' W		HOGE	** DO NOT USE **
FISH LAKE NO DIP	RESTRICTED	43 04.698' N	122 30.163' W		HOGE	** DO NOT USE **
BLUE BLUFF NO DIP	RESTRICTED	42 54.762' N	122 50.236' W		HOGE	** DO NOT USE **

Devils Knob Complex

OR-UPF-000450
 Fire Perimeter Acres as of 08-12-21 @ 2011
 Total Acres: 6606
 Map Updated: 8/13/2021 @ 2136



- Dip Site
 - Helispot
 - Division Line
 - Temporary Flight Restriction
- Fires that are contained or out

