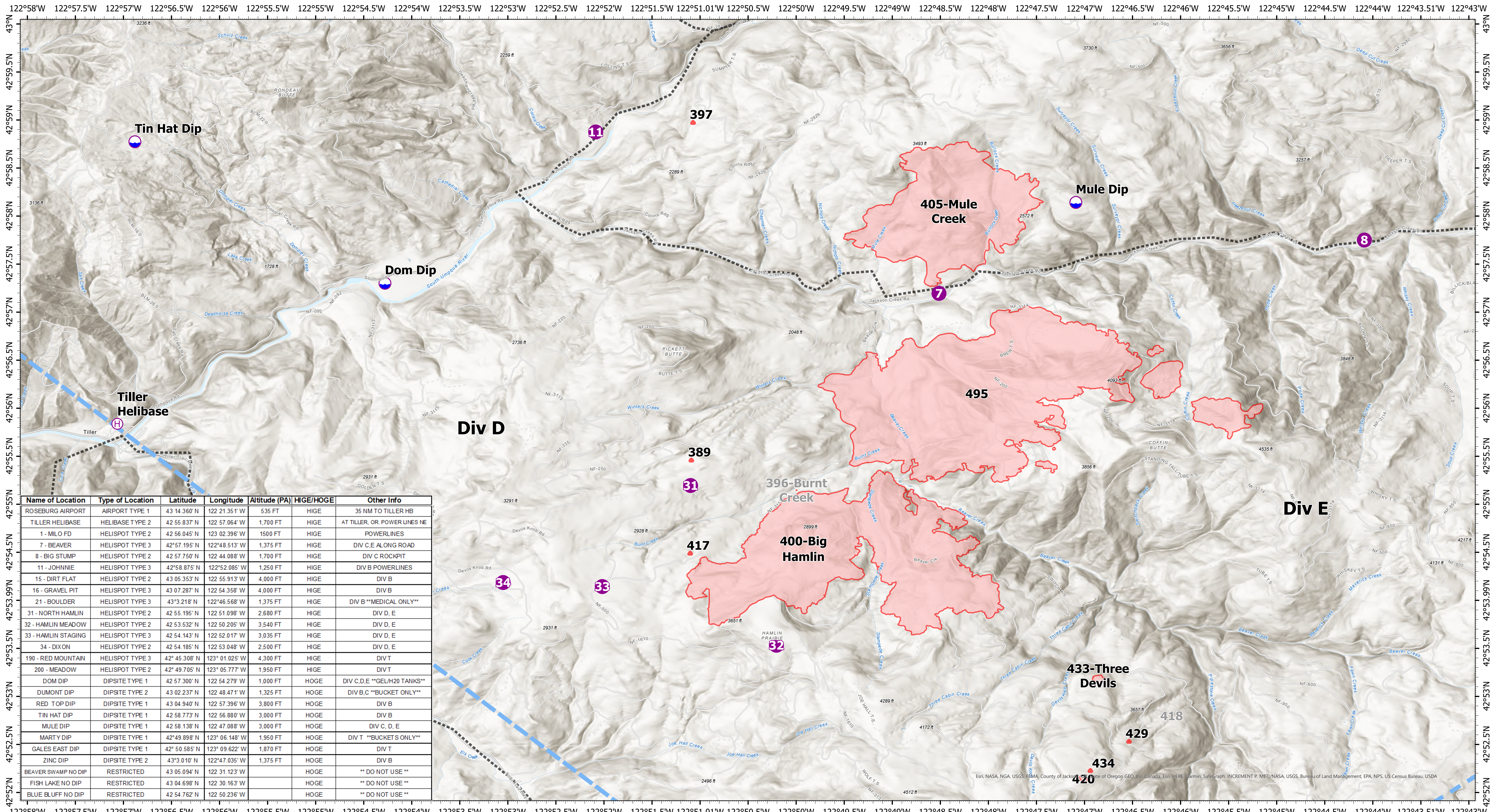


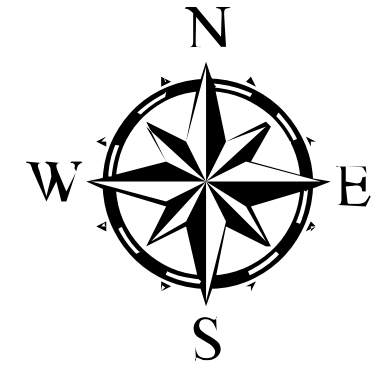
Pilot, Branch I



Name of Location	Type of Location	Latitude	Longitude	Altitude (PA)	HIGE/HOGE	Other Info
ROSEBURG AIRPORT	AIRPORT TYPE 1	43 14 36.0' N	122 21 35.1' W	535 FT	HIGE	35 NM TO TILLER HB
TILLER HELIBASE	HELIBASE TYPE 2	42 55 83.7' N	122 57 06.4' W	1,700 FT	HIGE	AT TILLER, OR. POWER LINES NE
1 - MILO FD	HELISPOT TYPE 2	42 56 04.5' N	123 02 39.6' W	1500 FT	HIGE	POWERLINES
7 - BEAVER	HELISPOT TYPE 3	42°57.195' N	122°48.513' W	1,375 FT	HIGE	DIV C,E ALONG ROAD
8 - BIG STUMP	HELISPOT TYPE 2	42 57 75.0' N	122 44 08.8' W	1,700 FT	HIGE	DIV C ROCKPIT
11 - JOHNIE	HELISPOT TYPE 3	42°58.875' N	122°52.085' W	1,250 FT	HIGE	DIV B POWERLINES
15 - DIRT FLAT	HELISPOT TYPE 2	43 05 35.3' N	122 55 31.3' W	4,000 FT	HIGE	DIV B
16 - GRAVEL PIT	HELISPOT TYPE 3	43 07 28.7' N	122 54 35.8' W	4,000 FT	HIGE	DIV B
21 - BOULDER	HELISPOT TYPE 3	43°3.218' N	122°46.568' W	1,375 FT	HIGE	DIV B **MEDICAL ONLY**
31 - NORTH HAMLIN	HELISPOT TYPE 2	42 55 19.5' N	122 51 09.8' W	2,680 FT	HIGE	DIV D, E
32 - HAMLIN MEADOW	HELISPOT TYPE 2	42 53 53.2' N	122 50 20.5' W	3,540 FT	HIGE	DIV D, E
33 - HAMLIN STAGING	HELISPOT TYPE 3	42 54 14.3' N	122 52 01.7' W	3,035 FT	HIGE	DIV D, E
34 - DIXON	HELISPOT TYPE 2	42 54 18.5' N	122 53 04.8' W	2,500 FT	HIGE	DIV D, E
190 - RED MOUNTAIN	HELISPOT TYPE 3	42° 45 30.8' N	123° 01 02.5' W	4,300 FT	HIGE	DIV T
200 - MEADOW	HELISPOT TYPE 2	42° 49 70.5' N	123° 05 77.7' W	1,950 FT	HIGE	DIV T
DOM DIP	DIPSITE TYPE 1	42 57 30.0' N	122 54 27.9' W	1,000 FT	HOGE	DIV C,D,E **GEL/H2O TANKS**
DUMONT DIP	DIPSITE TYPE 2	43 02 23.7' N	122 48 47.1' W	1,325 FT	HOGE	DIV B,C **BUCKET ONLY**
RED TOP DIP	DIPSITE TYPE 1	43 04 94.0' N	122 57 39.6' W	3,800 FT	HOGE	DIV B
TIN HAT DIP	DIPSITE TYPE 1	42 58 77.3' N	122 56 88.0' W	3,000 FT	HOGE	DIV B
MULE DIP	DIPSITE TYPE 1	42 58 13.8' N	122 47 08.8' W	3,000 FT	HOGE	DIV C, D, E
MARTY DIP	DIPSITE TYPE 1	42°49.898' N	123° 06 14.8' W	1,950 FT	HOGE	DIV T **BUCKETS ONLY**
GALES EAST DIP	DIPSITE TYPE 1	42° 50 58.5' N	123° 09 62.2' W	1,870 FT	HOGE	DIV T
ZINC DIP	DIPSITE TYPE 2	43°3.010' N	122°47.035' W	1,375 FT	HOGE	DIV B
BEAVER SWAMP NO DIP	RESTRICTED	43 05 09.4' N	122 31 12.3' W		HOGE	** DO NOT USE **
FISH LAKE NO DIP	RESTRICTED	43 04 69.8' N	122 30 16.3' W		HOGE	** DO NOT USE **
BLUE BLUFF NO DIP	RESTRICTED	42 54 76.2' N	122 50 23.6' W		HOGE	** DO NOT USE **

Devils Knob Complex

OR-UPF-000450
 Fire Perimeter Acres as of 08-12-21 @ 2011
 Total Acres: 6606
 Map Updated:8/13/2021 @ 2137



- Dip Site
 - Helispot
 - Helibase
 - Temporary Flight Restriction
- Fires that are contained or out

