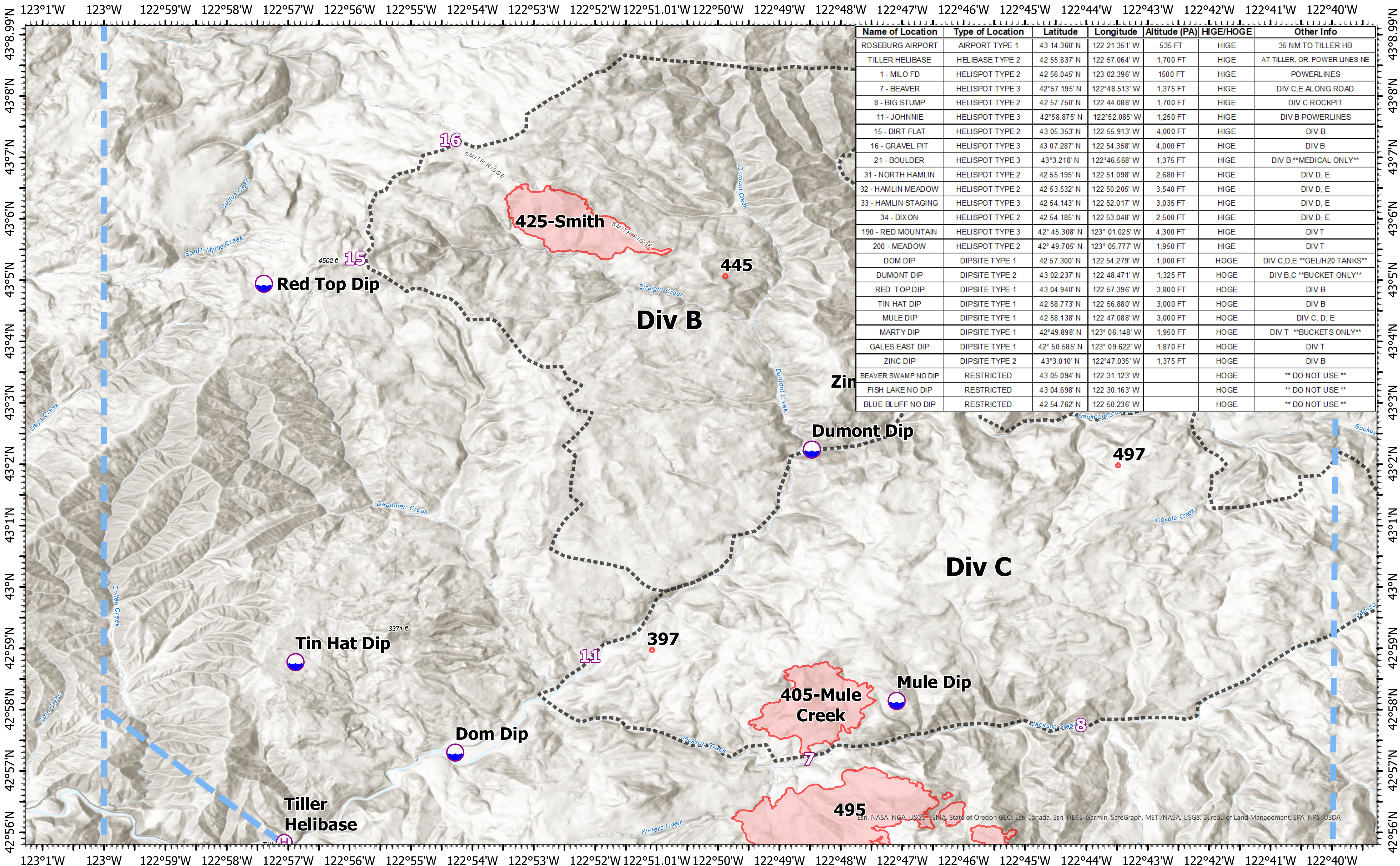


# Pilot, Branch I Division B, C



Name of Location	Type of Location	Latitude	Longitude	Altitude (PA)	HIGE/HOGE	Other Info
ROSEBURG AIRPORT	AIRPORT TYPE 1	43 14.360' N	122 21.351' W	535 FT	HIGE	35 NM TO TILLER HB
TILLER HELIBASE	HELIBASE TYPE 2	42 55.837' N	122 57.064' W	1,700 FT	HIGE	AT TILLER, OR. POWER LINES NE
1 - MILO FD	HELISPOT TYPE 2	42 56.045' N	123 02.396' W	1500 FT	HIGE	POWERLINES
7 - BEAVER	HELISPOT TYPE 3	42°57.195' N	122°48.513' W	1,375 FT	HIGE	DIV C,E ALONG ROAD
8 - BIG STUMP	HELISPOT TYPE 2	42 57.750' N	122 44.088' W	1,700 FT	HIGE	DIV C ROCKPIT
11 - JOHNNIE	HELISPOT TYPE 3	42°58.875' N	122°52.085' W	1,250 FT	HIGE	DIV B POWERLINES
15 - DIRT FLAT	HELISPOT TYPE 2	43 05.353' N	122 55.913' W	4,000 FT	HIGE	DIV B
16 - GRAVEL PIT	HELISPOT TYPE 3	43 07.287' N	122 54.358' W	4,000 FT	HIGE	DIV B
21 - BOULDER	HELISPOT TYPE 3	43°3.218' N	122°46.568' W	1,375 FT	HIGE	DIV B **MEDICAL ONLY**
31 - NORTH HAMLIN	HELISPOT TYPE 2	42 55.195' N	122 51.098' W	2,680 FT	HIGE	DIV D, E
32 - HAMLIN MEADOW	HELISPOT TYPE 2	42 53.532' N	122 50.205' W	3,540 FT	HIGE	DIV D, E
33 - HAMLIN STAGING	HELISPOT TYPE 3	42 54.143' N	122 52.017' W	3,035 FT	HIGE	DIV D, E
34 - DIXON	HELISPOT TYPE 2	42 54.185' N	122 53.048' W	2,500 FT	HIGE	DIV D, E
190 - RED MOUNTAIN	HELISPOT TYPE 3	42° 45.308' N	123° 01.025' W	4,300 FT	HIGE	DIV T
200 - MEADOW	HELISPOT TYPE 2	42° 49.705' N	123° 05.777' W	1,950 FT	HIGE	DIV T
DOM DIP	DIPSITE TYPE 1	42 57.300' N	122 54.279' W	1,000 FT	HOGE	DIV C,D,E **GEL/H2O TANKS**
DUMONT DIP	DIPSITE TYPE 2	43 02.237' N	122 48.471' W	1,325 FT	HOGE	DIV B,C **BUCKET ONLY**
RED TOP DIP	DIPSITE TYPE 1	43 04.940' N	122 57.396' W	3,800 FT	HOGE	DIV B
TIN HAT DIP	DIPSITE TYPE 1	42 58.773' N	122 56.880' W	3,000 FT	HOGE	DIV B
MULE DIP	DIPSITE TYPE 1	42 58.138' N	122 47.088' W	3,000 FT	HOGE	DIV C, D, E
MARTY DIP	DIPSITE TYPE 1	42°49.898' N	123° 06.148' W	1,950 FT	HOGE	DIV T **BUCKET ONLY**
GALES EAST DIP	DIPSITE TYPE 1	42° 50.585' N	123° 09.622' W	1,870 FT	HOGE	DIV T
ZINC DIP	DIPSITE TYPE 2	43°3.010' N	122°47.035' W	1,375 FT	HOGE	DIV B
BEAVER SWAMP NO DIP	RESTRICTED	43 05.094' N	122 31.123' W		HOGE	** DO NOT USE **
FISH LAKE NO DIP	RESTRICTED	43 04.698' N	122 30.163' W		HOGE	** DO NOT USE **
BLUE BLUFF NO DIP	RESTRICTED	42 54.762' N	122 50.236' W		HOGE	** DO NOT USE **

# Devils Knob Complex

OR-UPF-000450

Fire Perimeter Acres as of 08-12-21 @ 2011  
Total Acres: 6606

Map Updated:8/13/2021 @ 2135

- Dip Site
- Helispot
- Helibase
- Temporary Flight Restriction

Fires that are contained or out

