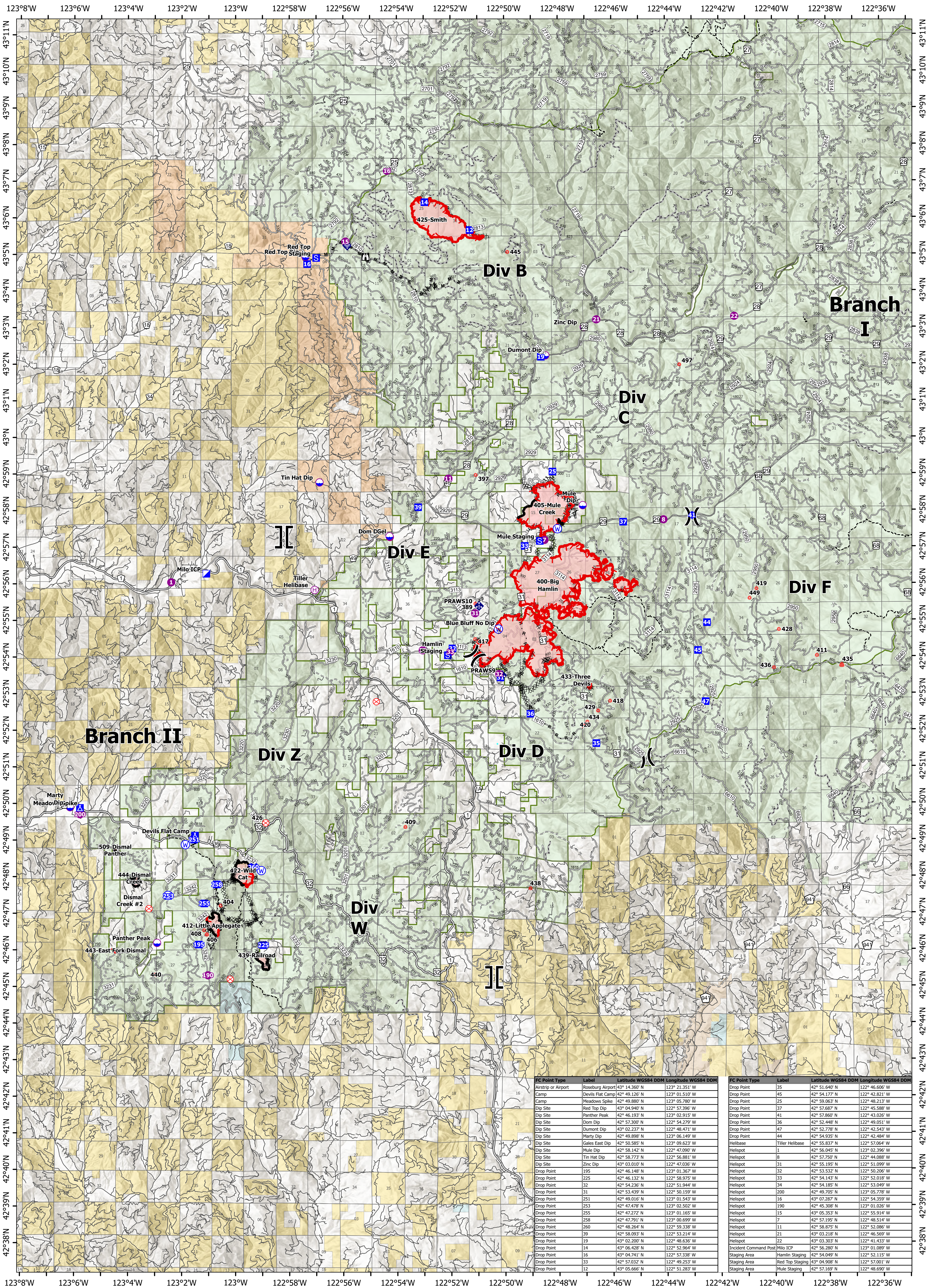


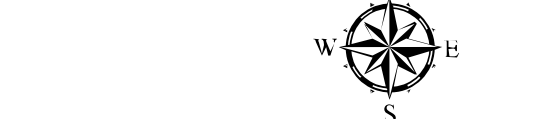
Medical



Devils Knob Complex

OR-UPF-000450

Fire Perimeter Acres as of 08-13-21 @ 2002
Total Acres: 7026



Map Updated: 8/14/2021 @ 2143

- Dip Site
- Mobile Retardant Base
- Helispot
- Helibase
-) Division Break
-] Branch Break
- Incident Command Post
- Drop Point
- Camp
- Staging Area
- Lookout
- Fire Origin
- Mobile Weather Unit
- Internet Access
- Water Source
- Restricted Water Source
- Completed Dozer Line
- Completed Fuel Break
- Completed Hand Line
- Completed Mixed Construction Line
- Completed Road as Line
- Planned Mixed Construction Line
- Access or Improved Road
- Fire Edge
- Contained Line
- Major_Roads
- Open FS Roads
- Closed FS Roads
- Decom_FS_Roads
- BLM_Roads
- Trails
- Bureau of Land Management
- U.S. Forest Service
- Bureau of Indian Affairs
- Other Federal
- State
- Private/Unknown
- Tiller Ranger District

FC Point Type	Label	Latitude WGS84 DDM	Longitude WGS84 DDM
Airstrip or Airport	Roseburg Airport	43° 14.360' N	123° 21.351' W
Camp	Devils Flat Camp	42° 49.126' N	123° 01.510' W
Camp	Meadows Spike	42° 49.880' N	123° 05.780' W
Dip Site	Red Top Dip	43° 04.940' N	122° 57.396' W
Dip Site	Panther Peak	42° 46.193' N	123° 02.815' W
Dip Site	Dom Dip	42° 54.279' N	122° 54.279' W
Dip Site	Dumont Dip	43° 02.237' N	122° 48.771' W
Dip Site	Marty Dip	42° 49.898' N	123° 06.149' W
Dip Site	Gales East Dip	42° 50.585' N	123° 09.623' W
Dip Site	Mule Dip	42° 58.142' N	122° 47.090' W
Dip Site	Tin Hat Dip	42° 58.773' N	122° 56.881' W
Dip Site	Zinc Dip	43° 03.010' N	122° 47.036' W
Drop Point	195	42° 46.148' N	123° 01.367' W
Drop Point	225	42° 46.132' N	122° 58.975' W
Drop Point	32	42° 54.236' N	122° 51.944' W
Drop Point	31	42° 53.439' N	122° 50.159' W
Drop Point	251	42° 49.016' N	123° 01.543' W
Drop Point	253	42° 47.478' N	123° 02.502' W
Drop Point	255	42° 47.272' N	123° 01.165' W
Drop Point	258	42° 47.791' N	123° 00.699' W
Drop Point	260	42° 48.264' N	122° 59.338' W
Drop Point	39	42° 58.093' N	122° 53.214' W
Drop Point	19	43° 02.200' N	122° 48.636' W
Drop Point	14	43° 06.428' N	122° 52.964' W
Drop Point	16	43° 04.741' N	122° 57.338' W
Drop Point	33	42° 57.032' N	122° 49.253' W
Drop Point	12	43° 05.666' N	122° 51.283' W

FC Point Type	Label	Latitude WGS84 DDM	Longitude WGS84 DDM
Drop Point	35	42° 51.640' N	122° 46.606' W
Drop Point	45	42° 54.177' N	122° 42.821' W
Drop Point	25	42° 59.063' N	122° 48.213' W
Drop Point	37	42° 57.687' N	122° 45.588' W
Drop Point	41	42° 57.860' N	122° 43.026' W
Drop Point	36	42° 52.446' N	122° 49.051' W
Drop Point	47	42° 52.778' N	122° 42.543' W
Drop Point	44	42° 54.935' N	122° 42.484' W
Helibase	Tiller Helibase	42° 55.835' N	122° 57.064' W
Helispot	1	42° 56.045' N	122° 02.396' W
Helispot	8	42° 57.750' N	122° 44.088' W
Helispot	31	42° 55.195' N	122° 51.099' W
Helispot	32	42° 53.532' N	122° 50.206' W
Helispot	33	42° 54.143' N	122° 52.018' W
Helispot	54	42° 54.185' N	122° 53.049' W
Helispot	200	42° 49.703' N	123° 05.778' W
Helispot	16	43° 07.287' N	122° 54.259' W
Helispot	190	42° 45.308' N	123° 01.026' W
Helispot	15	43° 05.353' N	122° 55.514' W
Helispot	7	42° 57.195' N	122° 48.514' W
Helispot	11	42° 58.875' N	122° 52.086' W
Helispot	21	43° 03.218' N	122° 46.569' W
Helispot	22	43° 03.303' N	122° 41.433' W
Incident Command Post	Milo ICP	42° 56.280' N	122° 51.089' W
Staging Area	Hamlin Staging	42° 54.049' N	122° 52.115' W
Staging Area	Red Top Staging	43° 04.908' N	122° 57.001' W
Staging Area	Mule Staging	42° 57.169' N	122° 48.690' W

