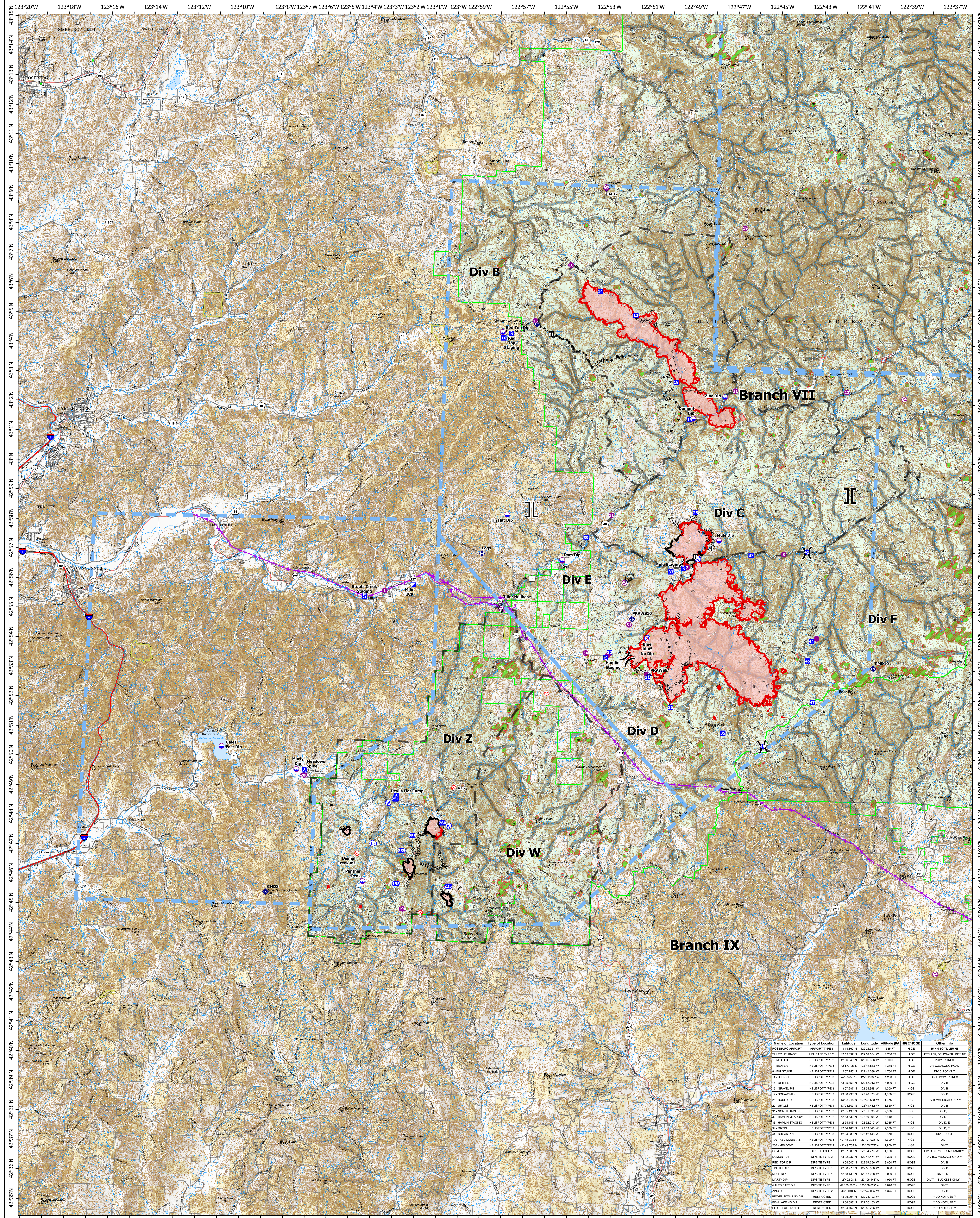


# Air Operations



Name of Location	Type of Location	Latitude	Longitude	Altitude (FA)	HIGE/HOGE	Other Info
CROSSING SUPPORT	HELIPOT TYPE 1	42°55'57" N	122°57'04" W	1,700 FT	HIGE	30 MPH TO TALLER FB
TILLER HELIBASE	HELIPOT TYPE 2	42°56'04" N	122°57'30" W	1,500 FT	HIGE	AT TILLER OR POWER LINES
1 - MUD FLAT	HELIPOT TYPE 2	42°56'04" N	122°57'30" W	1,500 FT	HIGE	POWER LINES
2 - BEARER	HELIPOT TYPE 2	42°57'19" N	122°57'17" W	1,375 FT	HIGE	DIV C/D/E BLOCK ROAD
3 - BIG STUMP	HELIPOT TYPE 2	42°57'32" N	122°54'58" W	1,300 FT	HIGE	DIV C/HOOKUP
11 - JOHNNIE	HELIPOT TYPE 2	42°58'07" N	122°52'00" W	1,200 FT	HIGE	DIV B/POWER LINES
15 - DIRT FLAT	HELIPOT TYPE 2	43°05'30" N	122°55'37" W	4,000 FT	HIGE	DIV B
19 - GRANVILLE PIT	HELIPOT TYPE 2	43°07'28" N	122°54'30" W	4,000 FT	HIGE	DIV B
20 - SUGAR PINE	HELIPOT TYPE 2	43°08'28" N	122°48'37" W	4,000 FT	HIGE	DIV B
21 - BOULDER	HELIPOT TYPE 3	43°03'18" N	122°48'50" W	1,375 FT	HIGE	DIV B "MEDICAL ONLY"
22 - UPFALLS	HELIPOT TYPE 1	43°03'30" N	122°41'42" W	1,600 FT	HIGE	DIV B
31 - NORTH HARKIN	HELIPOT TYPE 2	42°55'19" N	122°51'09" W	2,600 FT	HIGE	DIV D, E
42 - HARKIN MEADOW	HELIPOT TYPE 2	42°53'52" N	122°50'29" W	3,000 FT	HIGE	DIV D, E
43 - HARKIN STAGING	HELIPOT TYPE 3	42°54'14" N	122°52'07" W	3,000 FT	HIGE	DIV D, E
34 - DIXON	HELIPOT TYPE 2	42°54'18" N	122°53'04" W	2,900 FT	HIGE	DIV D, E
44 - SUGAR PINE	HELIPOT TYPE 2	42°54'58" N	122°42'48" W	3,870 FT	HIGE	DIV F, DUST
200 - RED MOUNTAIN	HELIPOT TYPE 2	42°48'58" N	122°49'22" W	4,000 FT	HIGE	DIV F
200 - MEADOW	HELIPOT TYPE 2	42°49'10" N	122°50'27" W	1,900 FT	HIGE	DIV F
DUM DIP	DISPITE TYPE 1	42°57'30" N	122°54'27" W	1,900 FT	HIGE	DIV C/D/E "BUCKET ONLY"
DUMOT DIP	DISPITE TYPE 2	43°02'27" N	122°48'47" W	1,325 FT	HIGE	DIV B/C "BUCKET ONLY"
RED TOP DIP	DISPITE TYPE 1	43°04'08" N	122°48'27" W	3,000 FT	HIGE	DIV B
WATY DIP	DISPITE TYPE 1	42°58'77" N	122°56'00" W	3,000 FT	HIGE	DIV B
MALE DIP	DISPITE TYPE 1	42°58'13" N	122°47'08" W	3,000 FT	HIGE	DIV C, D, E
WARTY DIP	DISPITE TYPE 1	42°58'58" N	122°48'47" W	1,325 FT	HIGE	DIV F "BUCKETS ONLY"
MALES EAST DIP	DISPITE TYPE 2	42°56'00" N	122°47'17" W	1,900 FT	HIGE	DIV B
ZINC DIP	DISPITE TYPE 2	43°01'19" N	122°47'00" W	1,375 FT	HIGE	DIV B
BEAVER SWAMP NO DIP	RESTRICTED	43°05'04" N	122°31'12" W	1,100 FT	HIGE	"DO NOT USE"
FISH LAKE NO DIP	RESTRICTED	43°04'08" N	122°30'10" W	1,100 FT	HIGE	"DO NOT USE"
BLUE BLUFF NO DIP	RESTRICTED	42°54'52" N	122°30'20" W	1,100 FT	HIGE	"DO NOT USE"

## Air Operations Devils Knob Complex 13,697 Acres August 18, 2021

- Helispot
- Incident Command Post
- ◆ Internet Access
- Completed Mixed Construction Line
- Aerial Hazard
- Dip Site
- Drop Point
- ◆ Repeater
- Completed Road as Line
- Camp
- ◆ Water Source
- Planned Dozer Line
- Mobile Retardant Base
- Staging Area
- ◆ Restricted Water Source
- Planned Hand Line
- Helibase
- Lookout
- ◆ Completed Dozer Line
- Planned Mixed Construction Line
- X Division Break
- ◆ Fire Origin
- Completed Fuel Break
- Access or Improved Road
- II Branch Break
- ◆ Mobile Weather Unit
- Completed Hand Line
- Aerial Hazard
- Temporary Flight Restriction
- Fire Edge
- Contained Line
- TECS Aerial Fire Retardant Avoidance

