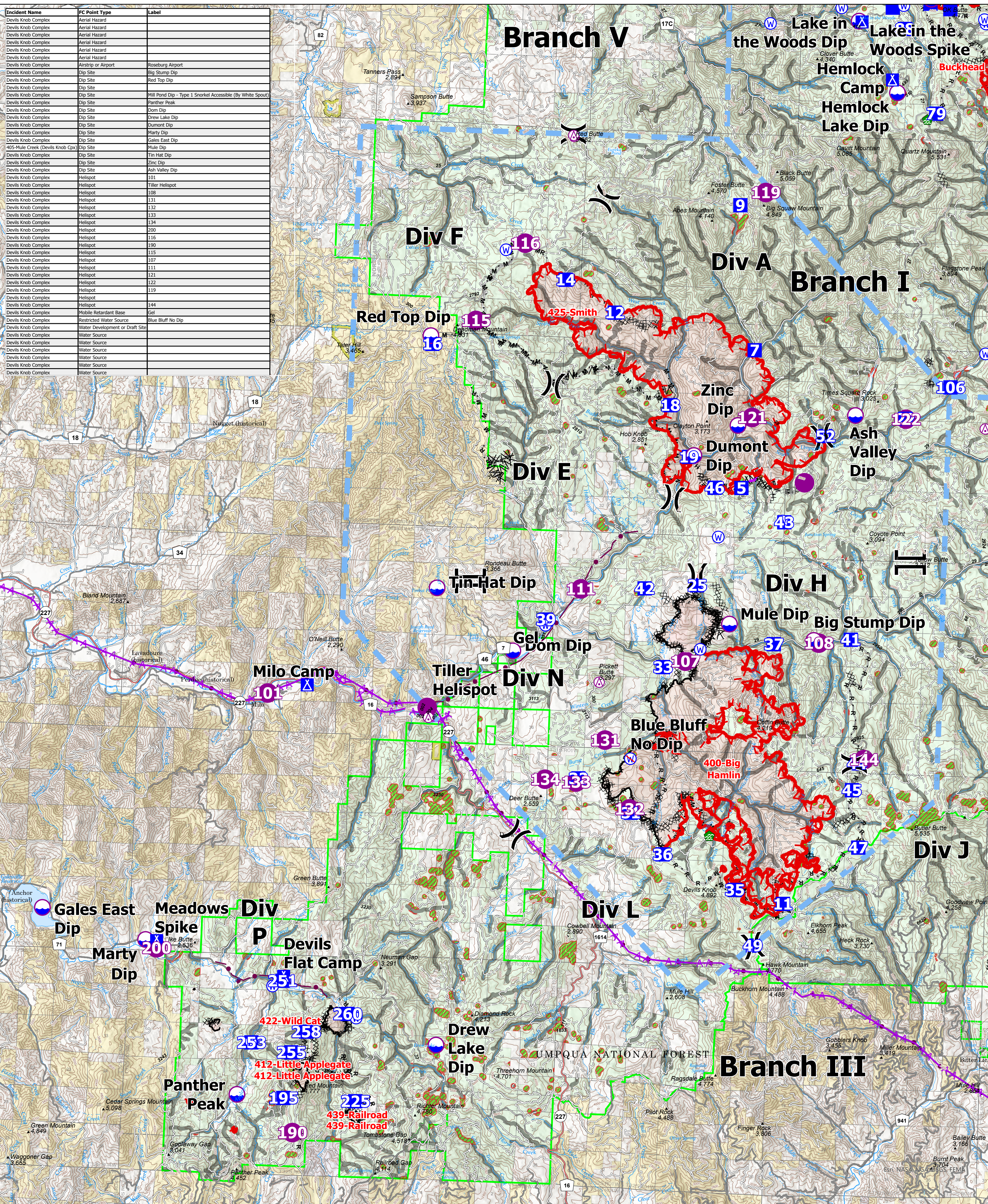


| Incident Name       | FC Point Type                   | Label  |
|---------------------|---------------------------------|--|
| Devils Knob Complex | Aerial Hazard                   |  |
| Devils Knob Complex | Aerial Hazard                   |  |
| Devils Knob Complex | Aerial Hazard                   |  |
| Devils Knob Complex | Aerial Hazard                   |  |
| Devils Knob Complex | Aerial Hazard                   |  |
| Devils Knob Complex | Aerial Hazard                   |  |
| Devils Knob Complex | Airstrip or Airport             | Roseburg Airport   |
| Devils Knob Complex | Dip Site                        | Big Stump Dip  |
| Devils Knob Complex | Dip Site                        | Red Top Dip  |
| Devils Knob Complex | Dip Site                        |  |
| Devils Knob Complex | Dip Site                        | Mill Pond Dip - Type 1 Snorkel Accessible (By White Spout) |
| Devils Knob Complex | Dip Site                        | Panther Peak   |
| Devils Knob Complex | Dip Site                        | Dom Dip  |
| Devils Knob Complex | Dip Site                        | Drew Lake Dip  |
| Devils Knob Complex | Dip Site                        | Dumont Dip   |
| Devils Knob Complex | Dip Site                        | Marty Dip  |
| Devils Knob Complex | Dip Site                        | Gales East Dip   |
| Devils Knob Complex | Dip Site                        | Mule Dip   |
| Devils Knob Complex | Dip Site                        | Tin Hat Dip  |
| Devils Knob Complex | Dip Site                        | Zinc Dip   |
| Devils Knob Complex | Dip Site                        | Ash Valley Dip   |
| Devils Knob Complex | Helispot                        | 101  |
| Devils Knob Complex | Helispot                        | Tiller Helispot  |
| Devils Knob Complex | Helispot                        | 108  |
| Devils Knob Complex | Helispot                        | 131  |
| Devils Knob Complex | Helispot                        | 132  |
| Devils Knob Complex | Helispot                        | 133  |
| Devils Knob Complex | Helispot                        | 134  |
| Devils Knob Complex | Helispot                        | 200  |
| Devils Knob Complex | Helispot                        | 116  |
| Devils Knob Complex | Helispot                        | 190  |
| Devils Knob Complex | Helispot                        | 115  |
| Devils Knob Complex | Helispot                        | 107  |
| Devils Knob Complex | Helispot                        | 111  |
| Devils Knob Complex | Helispot                        | 121  |
| Devils Knob Complex | Helispot                        | 122  |
| Devils Knob Complex | Helispot                        | 119  |
| Devils Knob Complex | Helispot                        | 144  |
| Devils Knob Complex | Helispot                        | 144  |
| Devils Knob Complex | Mobile Retardant Base           | Gel  |
| Devils Knob Complex | Restricted Water Source         | Blue Bluff No Dip  |
| Devils Knob Complex | Water Development or Draft Site |  |
| Devils Knob Complex | Water Source                    |  |
| Devils Knob Complex | Water Source                    |  |
| Devils Knob Complex | Water Source                    |  |
| Devils Knob Complex | Water Source                    |  |
| Devils Knob Complex | Water Source                    |  |
| Devils Knob Complex | Water Source                    |  |
| Devils Knob Complex | Water Source                    |  |



**Pilot**  
**Devils Knob Complex**  
 26322 Acres  
 August 25, 2021



FFS Red IMT1  
 8/25/2021 0959  
 North American 1983 Datum  
 0 1.5 3 Miles

- Utility Power Lines
  - Aerial Hazard
  - Dip Site
  - Mobile Retardant Base
  - Helispot
  - ) Division Break
  - | Branch Break
  - Drop Point
- Camp
  - Water Development or Draft Site
  - Water Source
  - Restricted Water Source
  - Completed Burnout
  - Completed Dozer Line
  - Completed Fuel Break
  - Completed Hand Line
- M - Completed Mixed Construction Line
  - R - Completed Road as Line
  - Planned Dozer Line
  - H - Planned Hand Line
  - M - Planned Mixed Construction Line
  - R - Planned Road as Line
  - Retardant Drop
  - Temporary Flight Restriction
  - Fire Edge
  - Contained Line
  - TECPS Aerial Fire Retardant Avoidance
  - Aquatic Aerial Fire Retardant Avoidance