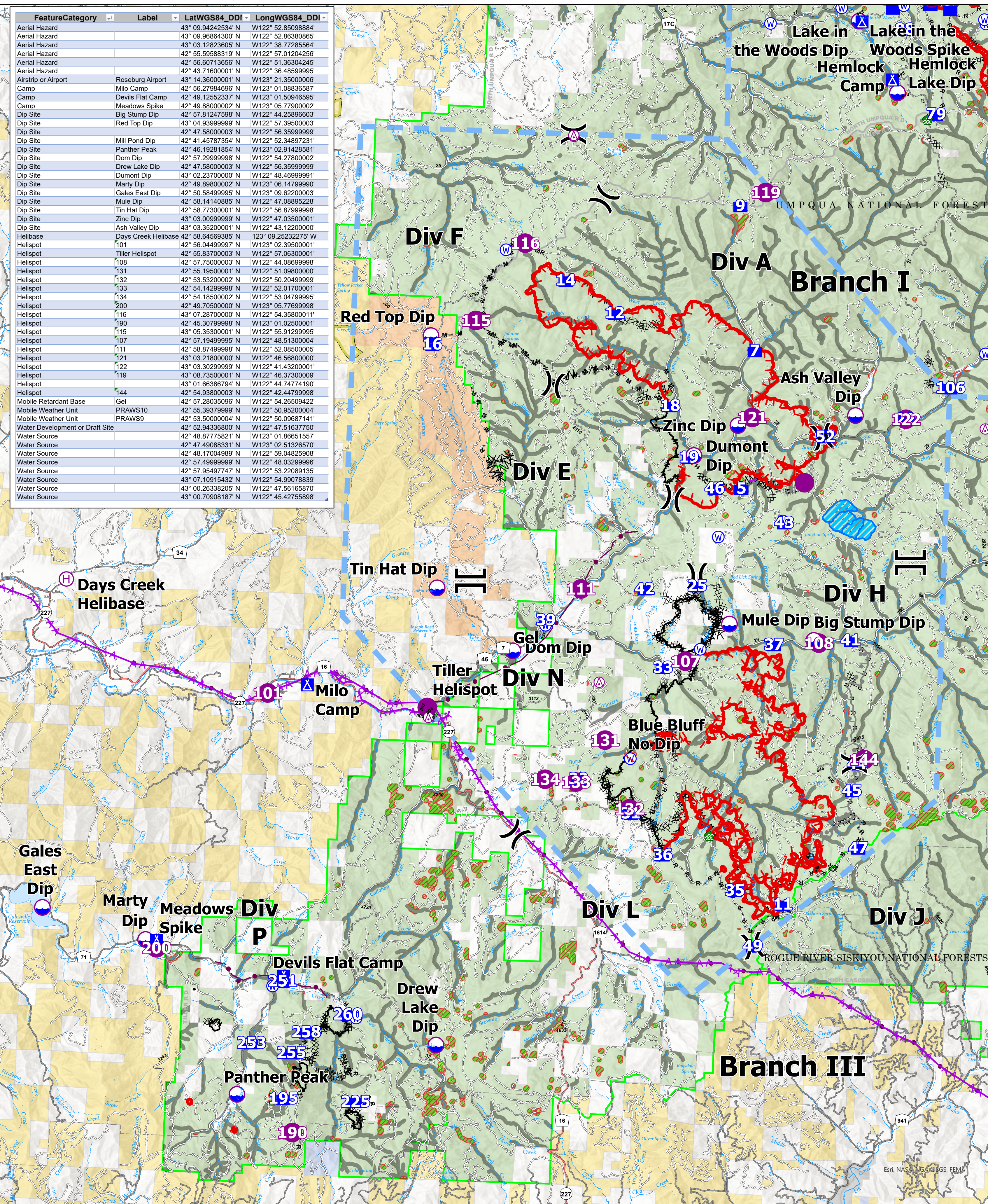
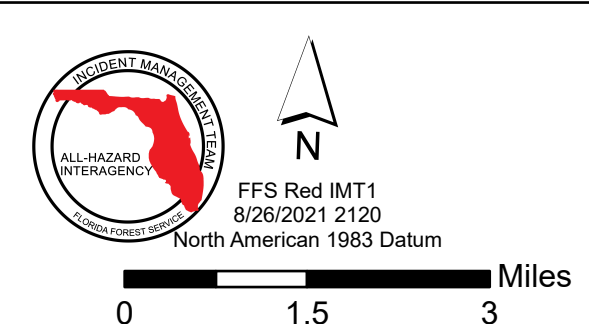


FeatureCategory	Label	LatWGS84_DDI	LongWGS84_DDI
Aerial Hazard		43° 09.9424534' N	W122° 52.85098884'
Aerial Hazard		43° 09.96864300' N	W122° 52.86380865'
Aerial Hazard		43° 03.12823605' N	W122° 38.77285564'
Aerial Hazard		42° 55.59588319' N	W122° 57.01204256'
Aerial Hazard		42° 56.60713656' N	W122° 51.36304245'
Aerial Hazard		42° 43.71600001' N	W122° 36.48599995'
Airstrip or Airport	Roseburg Airport	43° 14.36000001' N	W123° 21.35000006'
Camp	Milo Camp	42° 56.27984696' N	W123° 01.08836587'
Camp	Devils Flat Camp	42° 49.12552337' N	W123° 01.50946595'
Camp	Meadows Spike	42° 49.88000002' N	W123° 05.77900002'
Dip Site	Big Stump Dip	42° 57.81247598' N	W122° 44.25896603'
Dip Site	Red Top Dip	43° 04.93999999' N	W122° 57.39500003'
Dip Site		42° 47.58000003' N	W122° 56.35999999'
Dip Site	Mill Pond Dip	42° 41.45787354' N	W122° 52.34897231'
Dip Site	Panther Peak	42° 46.19281854' N	W123° 02.91428581'
Dip Site	Dom Dip	42° 57.29999998' N	W122° 54.27800002'
Dip Site	Drew Lake Dip	42° 47.58000003' N	W122° 56.35999999'
Dip Site	Dumont Dip	43° 02.23700000' N	W122° 48.46999991'
Dip Site	Marty Dip	42° 49.89800002' N	W123° 06.14799990'
Dip Site	Gales East Dip	42° 50.58499995' N	W123° 09.62200003'
Dip Site	Mule Dip	42° 58.14140885' N	W122° 47.08895228'
Dip Site	Tin Hat Dip	42° 58.77300001' N	W122° 56.87999998'
Dip Site	Zinc Dip	43° 03.00999999' N	W122° 47.03500001'
Dip Site	Ash Valley Dip	43° 03.35200001' N	W122° 43.12200000'
Helibase	Days Creek Helibase	42° 58.64569385' N	W123° 09.25232275' W
Helispot	101	42° 56.04499997' N	W123° 02.39500001'
Helispot	Tiller Helispot	42° 55.83700003' N	W122° 57.06300001'
Helispot	108	42° 57.75000003' N	W122° 44.08699998'
Helispot	131	42° 55.19500001' N	W122° 51.09800000'
Helispot	132	42° 53.53200002' N	W122° 50.20499999'
Helispot	133	42° 54.14299998' N	W122° 52.01700001'
Helispot	134	42° 54.18500002' N	W122° 53.04799995'
Helispot	200	42° 49.70500000' N	W123° 05.77699998'
Helispot	116	43° 07.28700000' N	W122° 54.35800011'
Helispot	190	42° 45.30799998' N	W123° 01.02500001'
Helispot	115	43° 05.35300001' N	W122° 55.91299995'
Helispot	107	42° 57.19499995' N	W122° 48.51300004'
Helispot	111	42° 58.87499998' N	W122° 52.08500005'
Helispot	121	43° 03.21800000' N	W122° 46.56800000'
Helispot	122	43° 03.30299999' N	W122° 41.43200001'
Helispot	119	43° 08.73500001' N	W122° 46.37300009'
Helispot	144	43° 01.66386794' N	W122° 44.74774190'
Helispot	144	42° 54.93800003' N	W122° 42.44799998'
Mobile Retardant Base	Gel	42° 57.28035096' N	W122° 54.26509422'
Mobile Weather Unit	PRAWS10	42° 55.39379999' N	W122° 50.95200004'
Mobile Weather Unit	PRAWS9	42° 53.50000004' N	W122° 50.09687141'
Water Development or Draft Site		42° 52.94336800' N	W122° 47.51637750'
Water Source		42° 48.87775821' N	W123° 01.86651557'
Water Source		42° 47.49088331' N	W123° 02.51326570'
Water Source		42° 48.17004989' N	W122° 59.04825908'
Water Source		42° 57.49999999' N	W122° 48.03299996'
Water Source		42° 57.95497747' N	W122° 53.22089135'
Water Source		43° 07.10915432' N	W122° 54.99078839'
Water Source		43° 00.26338205' N	W122° 47.56165870'
Water Source		43° 00.70908187' N	W122° 45.42755898'



Pilot
Devils Knob Complex
 28,151 Acres
 August 27, 2021



- Utility Power Lines
- Aerial Hazard
- Dip Site
- Mobile Retardant Base
- Helispot
- Helibase
- Division Break
- Branch Break
- Drop Point
- Camp
- Water Development or Draft Site
- Water Source
- Restricted Water Source
- Completed Burnout
- Completed Dozer Line
- Division Fuel Break
- Completed Hand Line
- Completed Mixed Construction Line
- Completed Road as Line
- Planned Burnout
- Planned Dozer Line
- Planned Hand Line
- Planned Mixed Construction Line
- Planned Road as Line
- Aerial Hazard
- Foam Drop
- Retardant Drop
- Route
- Temporary Flight Restriction
- Fire Edge
- Contained Line
- TECPs Aerial Fire Retardant Avoidance
- Fire Retardant Avoidance Area
- National Park Service
- U.S. Fish and Wildlife Service
- Bureau of Indian Affairs
- Other Federal
- State
- Local Government
- Private/Unknown
- Bureau of Land Management
- U.S. Forest Service
- Experimental Forest Watershed