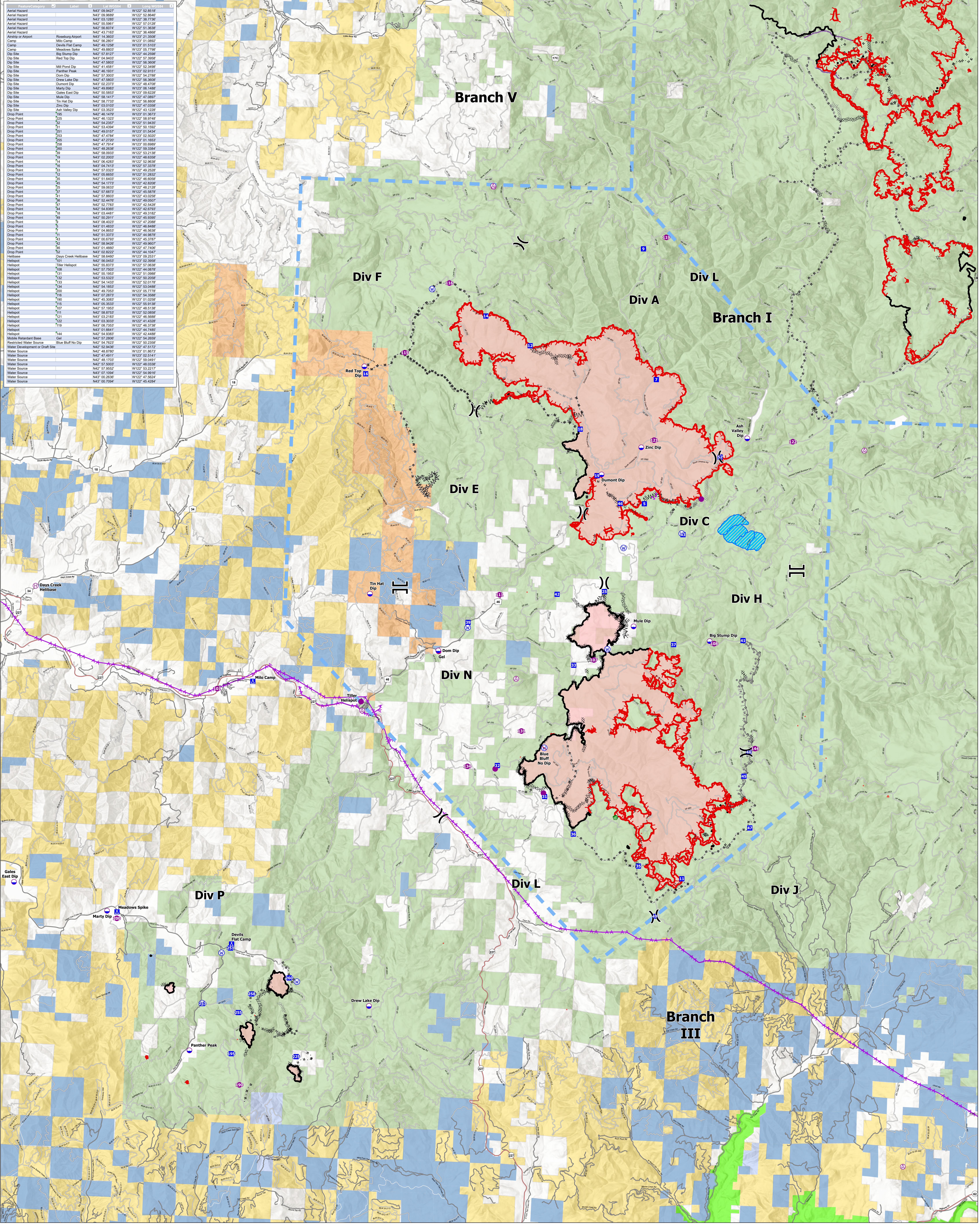


Feature/Category	Label	Lat WGS84	Long WGS84
Aerial Hazard	N43 09 9427	W122 52 8518	
Aerial Hazard	N43 09 9589	W122 52 8569	
Aerial Hazard	N43 03 1285	W122 38 7788	
Aerial Hazard	N42 58 811	W122 51 0128	
Aerial Hazard	N42 56 8074	W122 51 3638	
Aerial Hazard	N42 53 7183	W122 51 4868	
Aerial Hazard	N42 54 8003	W122 51 3608	
Airport or Airport	Roseburg Airport	N42 56 2801	W122 01 0892
Camp	Devils Flat Camp	N42 58 1246	W122 01 2152
Camp	Meadows Spike	N42 49 8803	W122 05 7788
Dip Site	Big Stump Dip	N42 57 1237	W122 44 2688
Dip Site	Red Top Dip	N43 04 9403	W122 57 3958
Dip Site	Mit Pond Dip	N42 47 5803	W122 56 3608
Dip Site	Parthen Peak	N42 46 1931	W122 02 9151
Dip Site	Dumont Dip	N42 51 3003	W122 48 4188
Dip Site	Drew Lake Dip	N42 47 5803	W122 56 3608
Dip Site	Marty Dip	N42 51 6983	W122 06 1488
Dip Site	Gales East Dip	N42 56 5853	W122 09 6228
Dip Site	Mule Dip	N42 58 1417	W122 47 0888
Dip Site	Tin Hat Dip	N42 57 7733	W122 56 8888
Dip Site	Ash Valley Dip	N43 03 3523	W122 43 1228
Drop Point	195	N42 46 1478	W122 01 3878
Drop Point	229	N42 51 1322	W122 58 9748
Drop Point	52	N42 54 2357	W122 51 8438
Drop Point	51	N42 51 4384	W122 49 1508
Drop Point	581	N42 49 9187	W122 01 5438
Drop Point	553	N42 51 4784	W122 49 5208
Drop Point	555	N42 47 2720	W122 01 1808
Drop Point	258	N42 47 7914	W122 00 0888
Drop Point	280	N42 58 2638	W122 59 3388
Drop Point	59	N42 58 0933	W122 53 2138
Drop Point	19	N43 03 2003	W122 48 8388
Drop Point	14	N43 06 4283	W122 52 9638
Drop Point	15	N43 04 7413	W122 57 3378
Drop Point	43	N42 57 8303	W122 58 9748
Drop Point	12	N42 54 2357	W122 51 8438
Drop Point	10	N42 51 4384	W122 49 1508
Drop Point	55	N42 54 1773	W122 42 8088
Drop Point	57	N42 57 6873	W122 45 5878
Drop Point	21	N42 47 8603	W122 43 0288
Drop Point	58	N42 51 4587	W122 49 0688
Drop Point	57	N42 57 7783	W122 42 5428
Drop Point	44	N42 58 8485	W122 48 6788
Drop Point	18	N43 03 4481	W122 49 3182
Drop Point	19	N42 56 2811	W122 45 3088
Drop Point	102	N43 08 4022	W122 47 2088
Drop Point	5	N43 01 4833	W122 46 8488
Drop Point	5	N43 01 4833	W122 46 8488
Drop Point	11	N42 51 3373	W122 44 9878
Drop Point	13	N42 51 4683	W122 46 6388
Drop Point	52	N42 58 9428	W122 49 9608
Drop Point	26	N43 01 4608	W122 47 7408
Drop Point	52	N42 58 9428	W122 49 9608
Helibase	Days Creek Helibase	N42 58 6468	W122 09 2531
Helibase	Tiller Helibase	N42 55 8373	W122 57 0638
Helibase	108	N42 57 7988	W122 44 0878
Helibase	131	N42 51 4303	W122 50 1988
Helibase	132	N42 55 5323	W122 50 2088
Helibase	133	N42 51 4433	W122 50 0188
Helibase	134	N42 54 1883	W122 53 0488
Helibase	100	N42 58 7053	W122 05 7788
Helibase	116	N43 07 2873	W122 54 5888
Helibase	130	N42 46 3283	W122 01 0288
Helibase	115	N42 55 3033	W122 58 9188
Helibase	107	N42 51 1953	W122 48 5188
Helibase	111	N42 58 8753	W122 50 1888
Helibase	121	N43 01 2183	W122 49 5888
Helibase	122	N42 58 3883	W122 41 6288
Helibase	119	N43 01 5853	W122 45 3788
Helibase	144	N43 01 8641	W122 44 7488
Helibase	101	N42 58 9383	W122 42 4488
Mobile Retardant Base	Gel	N42 57 2808	W122 54 2858
Restricted Water Source	Blue Bluff No Dip	N42 54 7823	W122 01 2388
Water Development or Draft Site	N42 58 9428	W122 47 5172	
Water Source	N42 48 8788	W122 01 8878	
Water Source	N42 51 6911	W122 02 1411	
Water Source	N42 47 1703	W122 59 0491	
Water Source	N42 57 5003	W122 48 0388	
Water Source	N42 47 9552	W122 53 2211	
Water Source	N42 57 1844	W122 54 9818	
Water Source	N43 00 2538	W122 47 5624	
Water Source	N43 00 7994	W122 45 4284	

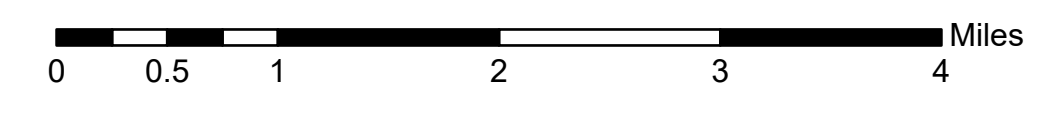


Air Operations

Devils Knob Complex
31,224 Acres
August 29, 2021



FFS Red IMT1
8/28/2021 1854
North American 1983 Datum.



- Helispot
- Drop Point
- Camp
- Water Development or Draft Site
- Water Source
- Restricted Water Source
- X Division Break
- = Branch Break
- Completed Fuel Break
- Completed Hand Line
- Completed Mixed Construction Line
- Completed Road as Line
- Completed Burnout
- Completed Dozer Line
- Completed Hand Line
- Planned Mixed Construction Line
- Planned Road as Line
- Aerial Hazard
- Foam Drop
- Retardant Drop
- Route
- Temporary Flight Restriction
- Fire Edge
- Contained Line
- Secondary Highway
- Paved Roads
- Dirt (Not Paved)
- Wildfire Daily Fire Perimeter
- Experimental Forest Watershed
- Bureau of Land Management
- U.S. Forest Service
- Bureau of Indian Affairs
- Other Federal
- State
- Private/Unknown
- Private Timber Companies