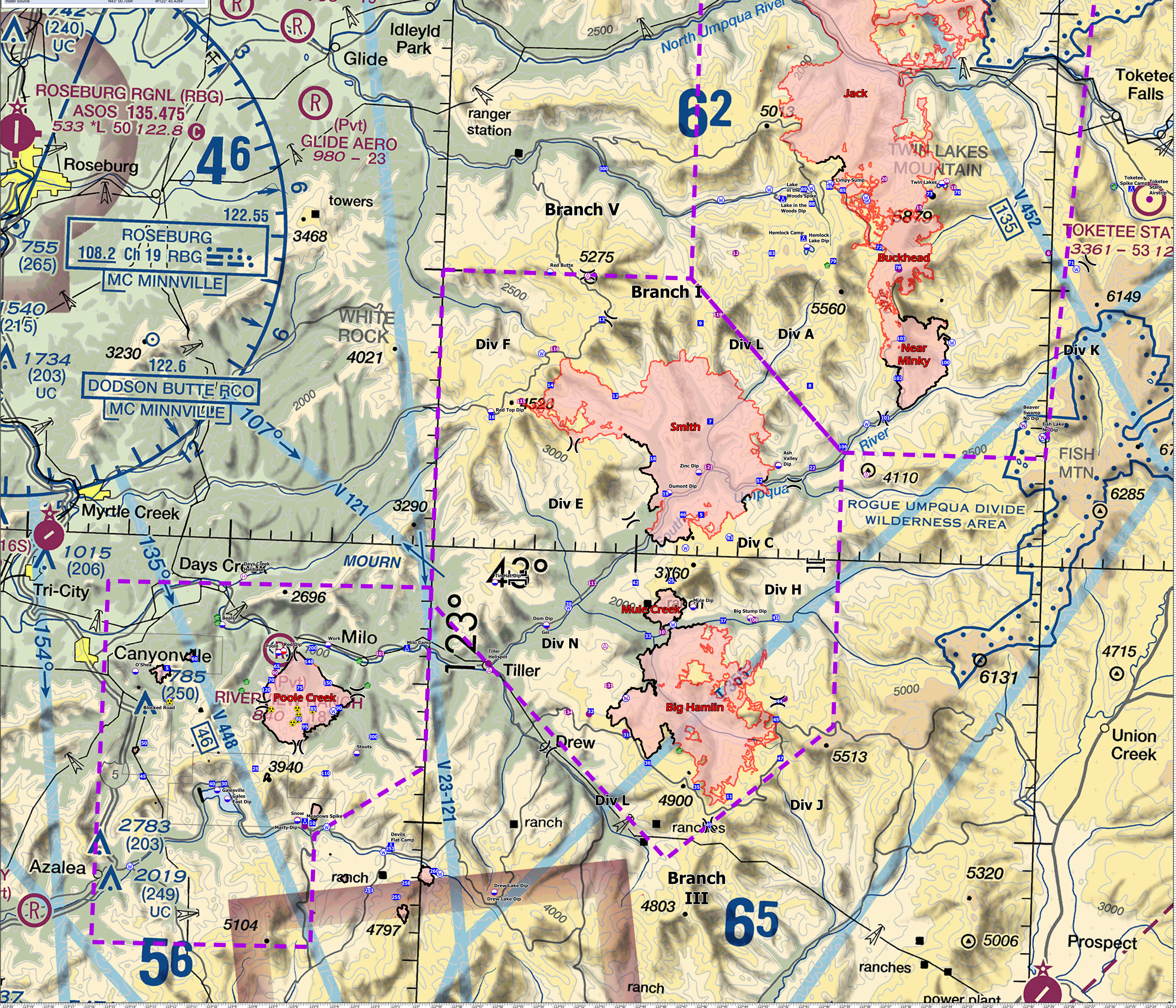


Category	Label	NAD83	W122
Aerial Hazard		NAD83 09 9889	W122 52 8646
Aerial Hazard		NAD83 01 1288	W122 38 7995
Aerial Hazard		NAD83 55 5981	W122 57 0126
Aerial Hazard		NAD83 56 6974	W122 51 3638
Aerial Hazard		NAD83 43 7157	W122 36 4695
Airfield or Airport	Roseburg Airport	NAD83 14 3603	W122 21 3608
Camp	Mini Camp	NAD83 56 2857	W122 01 0652
Camp	Devils Flat Camp	NAD83 49 1298	W122 01 0103
Camp	Meadow Spike	NAD83 49 8923	W122 05 7798
Dip Site	Big Stump Dip	NAD83 57 8127	W122 44 2098
Dip Site	Red Top Dip	NAD83 04 9403	W122 57 3058
Dip Site		NAD83 47 6357	W122 43 3098
Dip Site	Mill Pond Dip	NAD83 41 4581	W122 53 3498
Dip Site	Parthen Peak	NAD83 56 1931	W122 02 1611
Dip Site	Dom Dip	NAD83 57 3003	W122 54 2788
Dip Site	Drew Lake Dip	NAD83 47 8803	W122 56 3008
Dip Site	Dumont Dip	NAD83 02 2373	W122 48 4708
Dip Site	Marty Dip	NAD83 49 8983	W122 06 1488
Dip Site	Gales East Dip	NAD83 57 8127	W122 09 0208
Dip Site	Mule Dip	NAD83 58 1417	W122 47 0897
Dip Site	Tin Hat Dip	NAD83 58 7737	W122 56 8008
Dip Site	Zinc Dip	NAD83 03 0103	W122 53 0103
Dip Site	Ash Valley Dip	NAD83 03 3523	W122 43 1228
Drop Point		NAD83 46 1323	W122 58 9748
Drop Point		NAD83 54 2553	W122 51 8485
Drop Point		NAD83 53 4394	W122 50 1992
Drop Point		NAD83 49 0157	W122 01 5434
Drop Point		NAD83 47 4794	W122 02 2008
Drop Point		NAD83 47 2797	W122 01 1603
Drop Point		NAD83 47 7943	W122 00 0908
Drop Point		NAD83 48 2638	W122 59 3384
Drop Point		NAD83 53 1138	W122 53 1138
Drop Point		NAD83 05 9998	W122 54 5012
Drop Point		NAD83 04 7413	W122 48 9098
Drop Point		NAD83 57 0323	W122 49 2528
Drop Point		NAD83 09 8698	W122 50 3078
Drop Point		NAD83 51 6403	W122 46 6058
Drop Point		NAD83 54 1773	W122 42 8038
Drop Point		NAD83 59 0033	W122 49 1198
Drop Point		NAD83 57 8873	W122 45 8878
Drop Point		NAD83 47 8903	W122 43 2098
Drop Point		NAD83 52 4478	W122 49 0607
Drop Point		NAD83 52 7783	W122 43 1228
Drop Point		NAD83 54 8367	W122 42 0793
Drop Point		NAD83 03 4481	W122 49 1862
Drop Point		NAD83 50 2013	W122 49 3098
Drop Point		NAD83 08 4023	W122 47 2088
Drop Point		NAD83 01 4633	W122 46 8488
Drop Point		NAD83 04 8653	W122 46 5638
Drop Point		NAD83 51 3373	W122 44 9878
Drop Point		NAD83 00 8793	W122 45 7197
Drop Point		NAD83 58 9428	W122 49 9007
Drop Point		NAD83 01 4903	W122 49 4498
Drop Point		NAD83 02 7837	W122 44 0338
Drop Point		NAD83 08 4273	W122 41 7653
Drop Point		NAD83 08 4147	W122 52 0607
Helibase	Days Creek Helibase	NAD83 58 6407	W122 09 2513
Helibase	Tiller Helibase	NAD83 55 8373	W122 57 0638
Helibase		NAD83 57 7603	W122 44 0178
Helibase		NAD83 55 1853	W122 51 0988
Helibase		NAD83 53 5323	W122 50 2698
Helibase		NAD83 59 8753	W122 52 0718
Helibase		NAD83 54 1853	W122 53 0488
Helibase		NAD83 51 6353	W122 51 7178
Helibase		NAD83 07 2873	W122 54 3688
Helibase		NAD83 45 2053	W122 01 0908
Helibase		NAD83 05 3533	W122 55 9138
Helibase		NAD83 57 1953	W122 48 5138
Helibase		NAD83 58 9753	W122 52 0698
Helibase		NAD83 03 2183	W122 46 5898
Helibase		NAD83 03 3033	W122 41 4208
Helibase		NAD83 08 7353	W122 46 3738
Helibase		NAD83 01 0843	W122 44 7488
Mobile Retardant Base		NAD83 54 9353	W122 42 4488
Mobile Retardant Base		NAD83 57 2893	W122 54 2698
Mobile Retardant Base		NAD83 54 7623	W122 41 7623
Water Development or Draft Site		NAD83 52 8438	W122 47 5172
Water Source		NAD83 48 1703	W122 59 0491
Water Source		NAD83 57 5038	W122 48 0398
Water Source		NAD83 57 9553	W122 53 2217
Water Source		NAD83 07 1998	W122 54 9018
Water Source		NAD83 00 2638	W122 47 5624
Water Source		NAD83 00 7994	W122 45 4284



# Regional Air Operations

Devils Knob Complex  
41,219 Acres  
September 3, 2021

FFS Red IMT1  
9/3/2021 0909