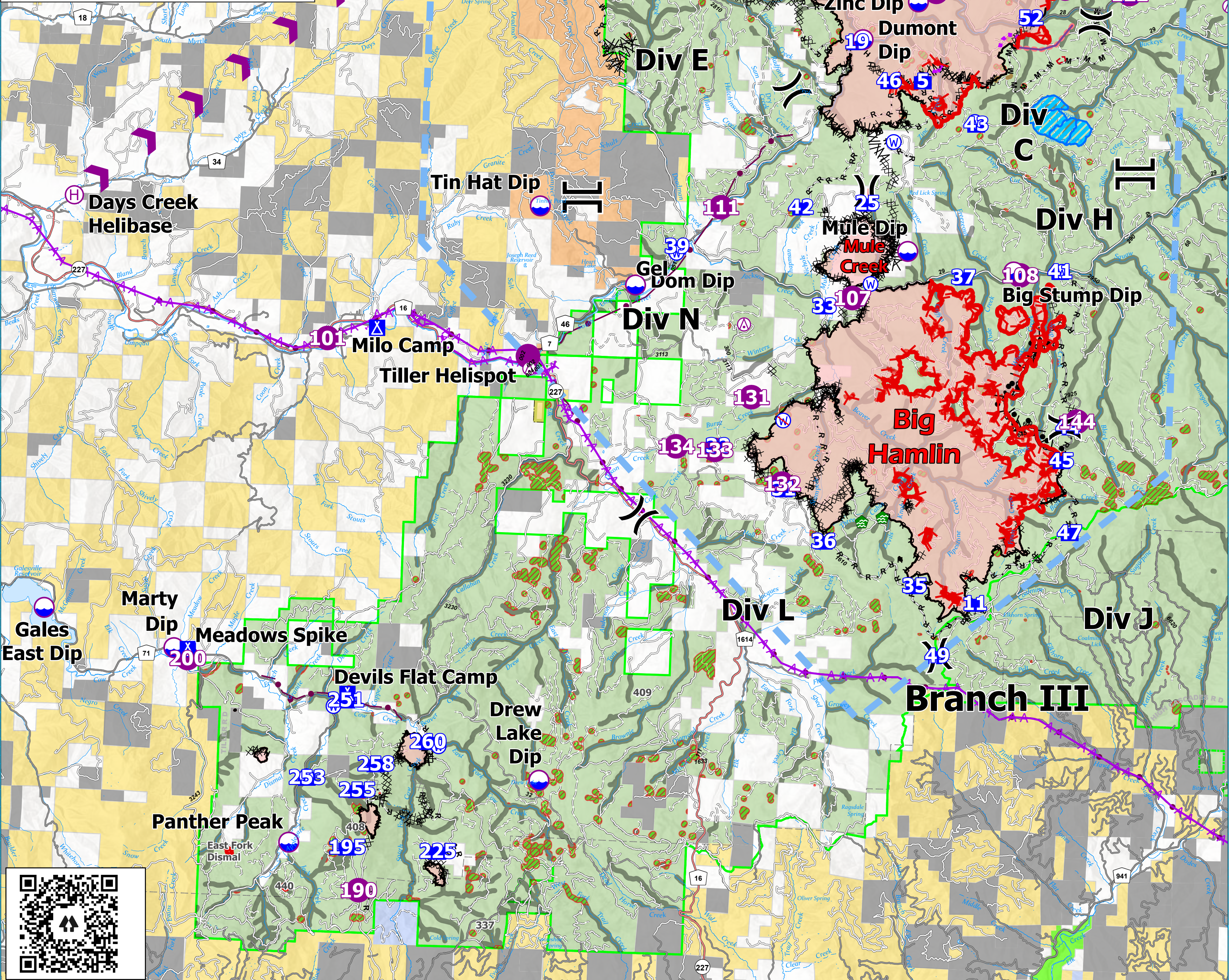


FeatureCategory	Label	Lat WGS84	Long WGS84
Aerial Hazard		N43° 09.9427'	W122° 52.8518'
Aerial Hazard		N43° 09.9689'	W122° 52.8646'
Aerial Hazard		N43° 03.1285'	W122° 38.7736'
Aerial Hazard		N42° 55.5961'	W122° 57.0128'
Aerial Hazard		N42° 56.6074'	W122° 51.3638'
Aerial Hazard		N42° 43.7163'	W122° 36.4868'
Airstrip or Airport	Roseburg Airport	N43° 14.3603'	W123° 21.3508'
Camp	Milo Camp	N42° 56.2801'	W123° 01.0892'
Camp	Devils Flat Camp	N42° 49.1258'	W123° 01.5103'
Camp	Meadows Spike	N42° 49.8803'	W123° 05.7798'
Dip Site	Big Stump Dip	N42° 57.8127'	W122° 44.2598'
Dip Site	Red Top Dip	N43° 04.9403'	W122° 57.3958'
Dip Site		N42° 47.5803'	W122° 56.3608'
Dip Site	Mill Pond Dip	N42° 41.4581'	W122° 52.3498'
Dip Site	Panther Peak	N42° 46.1931'	W123° 02.9151'
Dip Site	Dom Dip	N42° 57.3003'	W122° 54.2788'
Dip Site	Drew Lake Dip	N42° 47.5803'	W122° 56.3608'
Dip Site	Dumont Dip	N43° 02.2373'	W122° 48.4708'
Dip Site	Marty Dip	N42° 49.8983'	W123° 06.1488'
Dip Site	Gales East Dip	N42° 50.5853'	W123° 09.6228'
Dip Site	Mule Dip	N42° 58.1417'	W122° 47.0897'
Dip Site	Tin Hat Dip	N42° 58.7733'	W122° 56.8808'
Dip Site	Zinc Dip	N43° 03.0103'	W122° 47.0358'
Dip Site	Ash Valley Dip	N43° 03.3523'	W122° 43.1228'
Helibase	Days Creek Helibase	N42° 58.6460'	W123° 09.2531'
Helispot	101	N42° 56.0453'	W123° 02.3958'
Helispot	Tiller Helispot	N42° 56.8373'	W122° 57.0638'
Helispot	108	N42° 57.7503'	W122° 44.0878'
Helispot	131	N42° 55.1953'	W122° 51.0988'
Helispot	132	N42° 53.5323'	W122° 50.2058'
Helispot	133	N42° 54.1433'	W122° 52.0178'
Helispot	134	N42° 54.1853'	W122° 53.0488'
Helispot	200	N42° 49.7053'	W123° 05.7778'
Helispot	116	N43° 07.2873'	W122° 54.3588'
Helispot	190	N42° 45.3083'	W123° 01.0258'
Helispot	115	N43° 05.3533'	W122° 55.9138'
Helispot	107	N42° 57.1953'	W122° 48.5138'
Helispot	111	N42° 58.8753'	W122° 52.0858'
Helispot	121	N43° 03.2183'	W122° 46.5688'
Helispot	122	N43° 03.3033'	W122° 41.4328'
Helispot	119	N43° 08.7353'	W122° 46.3738'
Helispot	144	N43° 01.6641'	W122° 44.7485'
Helispot	144	N42° 54.9383'	W122° 42.4488'
Mobile Retardant Base	Gel	N42° 57.2806'	W122° 54.2659'
Restricted Water Source	Blue Bluff No Dip	N42° 54.7623'	W122° 50.2358'
Water Development or Draft Site		N42° 52.9436'	W122° 47.5172'
Water Source		N42° 48.8780'	W123° 01.8673'
Water Source		N42° 47.4911'	W123° 02.5141'
Water Source		N42° 48.1703'	W122° 59.0491'
Water Source		N42° 57.5003'	W122° 48.0338'
Water Source		N42° 57.9552'	W122° 53.2217'
Water Source		N43° 07.1094'	W122° 54.9916'
Water Source		N43° 00.2636'	W122° 47.5624'
Water Source		N43° 00.7094'	W122° 45.4284'



**Pilot**  
 Devils Knob Complex  
 43,830 Acres  
 September 5, 2021



FFS Red IMT1  
 9/4/2021 2002  
 North American 1983 Datum

	Helicopter Route		Drop Point		Completed Mixed Construction Line		Foil Drop		Bureau of Land Management
	Utility Power Lines		Camp		Completed Road as Line		Retardant Drop		U.S. Forest Service
	Aerial Hazard		Water Development or Draft Site		Planned Dozer Line		Route		National Park Service
	Dip Site		Restricted Water Source		Planned Hand Line		Temporary Flight Restriction		U.S. Fish and Wildlife Service
	Mobile Retardant Base		Completed Dozer Line		Planned Mixed Construction Line		Fire Edge		Bureau of Indian Affairs
	Helispot		Completed Burnout		Planned Road as Line		Contained Line		Other Federal
	Helibase		Completed Fuel Break		Fence		TECPS Aerial Fire Retardant Avoidance		State
	Division Break		Completed Hand Line		Road Repair		Fire Retardant Avoidance Area		Local Government
	Branch Break				Aerial Hazard		Experimental Forest Watershed		Private/Unknown