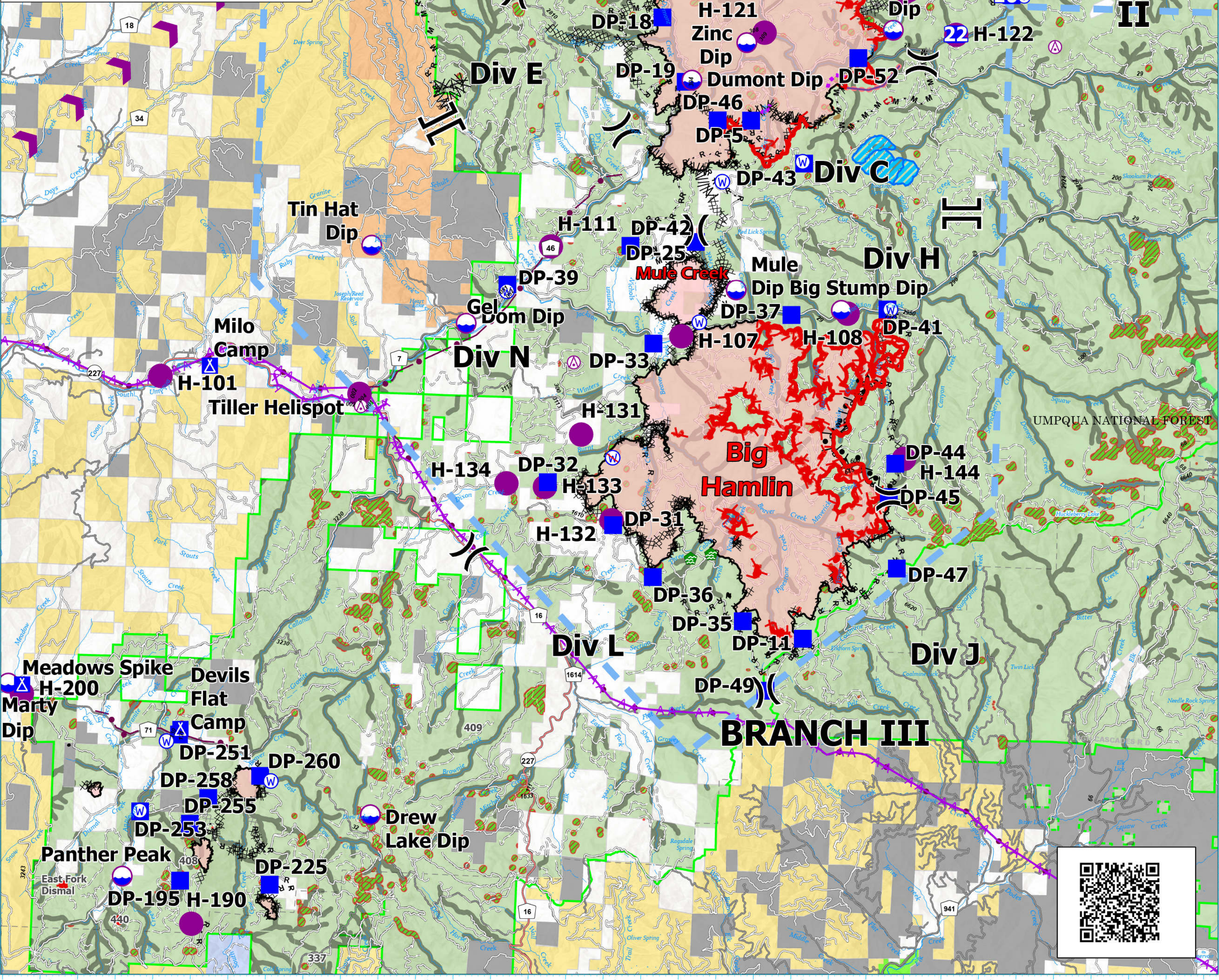


FeatureCategory	Label	Lat WGS84	Long WGS84
Aerial Hazard		N43° 09.9427'	W122° 52.8518'
Aerial Hazard		N43° 09.9689'	W122° 52.8646'
Aerial Hazard		N43° 03.1285'	W122° 38.7736'
Aerial Hazard		N42° 55.5961'	W122° 57.0128'
Aerial Hazard		N42° 56.6074'	W122° 51.3638'
Aerial Hazard		N42° 43.7163'	W122° 36.4868'
Airstrip or Airport	Roseburg Airport	N43° 14.3603'	W123° 21.3508'
Camp	Milo Camp	N42° 56.2801'	W123° 01.0892'
Camp	Devils Flat Camp	N42° 49.1258'	W123° 01.5103'
Camp	Meadows Spike	N42° 49.8803'	W123° 05.7798'
Dip Site	Big Stump Dip	N42° 57.8127'	W122° 44.2598'
Dip Site	Red Top Dip	N43° 04.9403'	W122° 57.3958'
Dip Site		N42° 47.5803'	W122° 56.3608'
Dip Site	Mill Pond Dip	N42° 41.4581'	W122° 52.3498'
Dip Site	Panther Peak	N42° 46.1931'	W123° 02.9151'
Dip Site	Dom Dip	N42° 57.3003'	W122° 54.2788'
Dip Site	Drew Lake Dip	N42° 47.5803'	W122° 56.3608'
Dip Site	Dumont Dip	N43° 02.2373'	W122° 48.4708'
Dip Site	Marty Dip	N42° 49.8983'	W123° 06.1488'
Dip Site	Gales East Dip	N42° 50.5853'	W122° 09.6228'
Dip Site	Mule Dip	N42° 58.1417'	W122° 47.0897'
Dip Site	Tin Hat Dip	N42° 58.7733'	W122° 56.8808'
Dip Site	Zinc Dip	N43° 03.0103'	W122° 47.0358'
Dip Site	Ash Valley Dip	N43° 03.3523'	W122° 43.1228'
Helibase	Days Creek Helibase	N42° 58.6460'	W123° 09.2531'
Helispot	101	N42° 56.0453'	W122° 02.3958'
Helispot	Tiller Helispot	N42° 55.8373'	W122° 57.0638'
Helispot	108	N42° 57.7503'	W122° 44.0878'
Helispot	131	N42° 55.1953'	W122° 51.0988'
Helispot	132	N42° 53.5323'	W122° 50.2058'
Helispot	133	N42° 54.1433'	W122° 52.0178'
Helispot	134	N42° 54.1853'	W122° 53.0488'
Helispot	200	N42° 49.7053'	W123° 05.7778'
Helispot	116	N43° 07.2873'	W122° 54.3588'
Helispot	190	N42° 45.3083'	W123° 01.0258'
Helispot	115	N43° 05.3533'	W122° 55.9138'
Helispot	107	N42° 57.1953'	W122° 48.5138'
Helispot	111	N42° 58.8753'	W122° 52.0858'
Helispot	121	N43° 03.2183'	W122° 46.5688'
Helispot	122	N43° 03.3033'	W122° 41.4328'
Helispot	119	N43° 08.7353'	W122° 46.3738'
Helispot	144	N42° 54.9383'	W122° 42.4488'
Mobile Retardant Base	Gel	N42° 57.2806'	W122° 54.2659'
Restricted Water Source	Blue Bluff No Dip	N42° 54.7623'	W122° 50.2358'
Water Development or Draft Site		N42° 52.9436'	W122° 47.5172'
Water Source		N42° 48.8780'	W123° 01.8673'
Water Source		N42° 47.4911'	W123° 02.5141'
Water Source		N42° 48.1703'	W122° 59.0491'
Water Source		N42° 57.5003'	W122° 48.0338'
Water Source		N42° 57.9552'	W122° 53.2217'
Water Source		N43° 07.1094'	W122° 54.9916'
Water Source		N43° 00.2636'	W122° 47.5624'
Water Source		N43° 00.7094'	W122° 45.4284'



Pilot
 Devils Knob Complex
 46,596 Acres
 September 6, 2021



FFS Red IMT1
 9/5/2021 2236
 North American 1983 Datum
 0 1.5 3 Miles

- Helicopter Route
- Utility Power Lines
- Aerial Hazard
- Dip Site
- Mobile Retardant Base
- Helispot
- Sling Site
- Division Break
- Branch Break
- Drop Point
- Camp
- Water Development or Draft Site
- Water Source
- Restricted Water Source
- Completed Burnout
- Completed Dozer Line
- Completed Fuel Break
- Completed Hand Line
- Completed Mixed Construction Line
- Completed Road as Line
- Planned Dozer Line
- Planned Fuel Break
- Planned Hand Line
- Planned Mixed Construction Line
- Planned Road as Line
- Fence
- Road Repair
- Aerial Hazard
- Foam Drop
- Retardant Drop
- Route
- Temporary Flight Restriction
- Fire Edge
- Contained Line
- TECPS Aerial Fire Retardant Avoidance
- Fire Retardant Avoidance Area
- Experimental Forest Watershed
- Ownership
- Bureau of Land Management
- U.S. Forest Service
- National Park Service
- U.S. Fish and Wildlife Service
- Bureau of Indian Affairs
- Other Federal
- State
- Local Government
- Private/Unknown
- Private Timber Companies
- Event Polygon
- Polygon Type
- Division
- Prescribed Fire
- Wildfire Daily Fire Perimeter