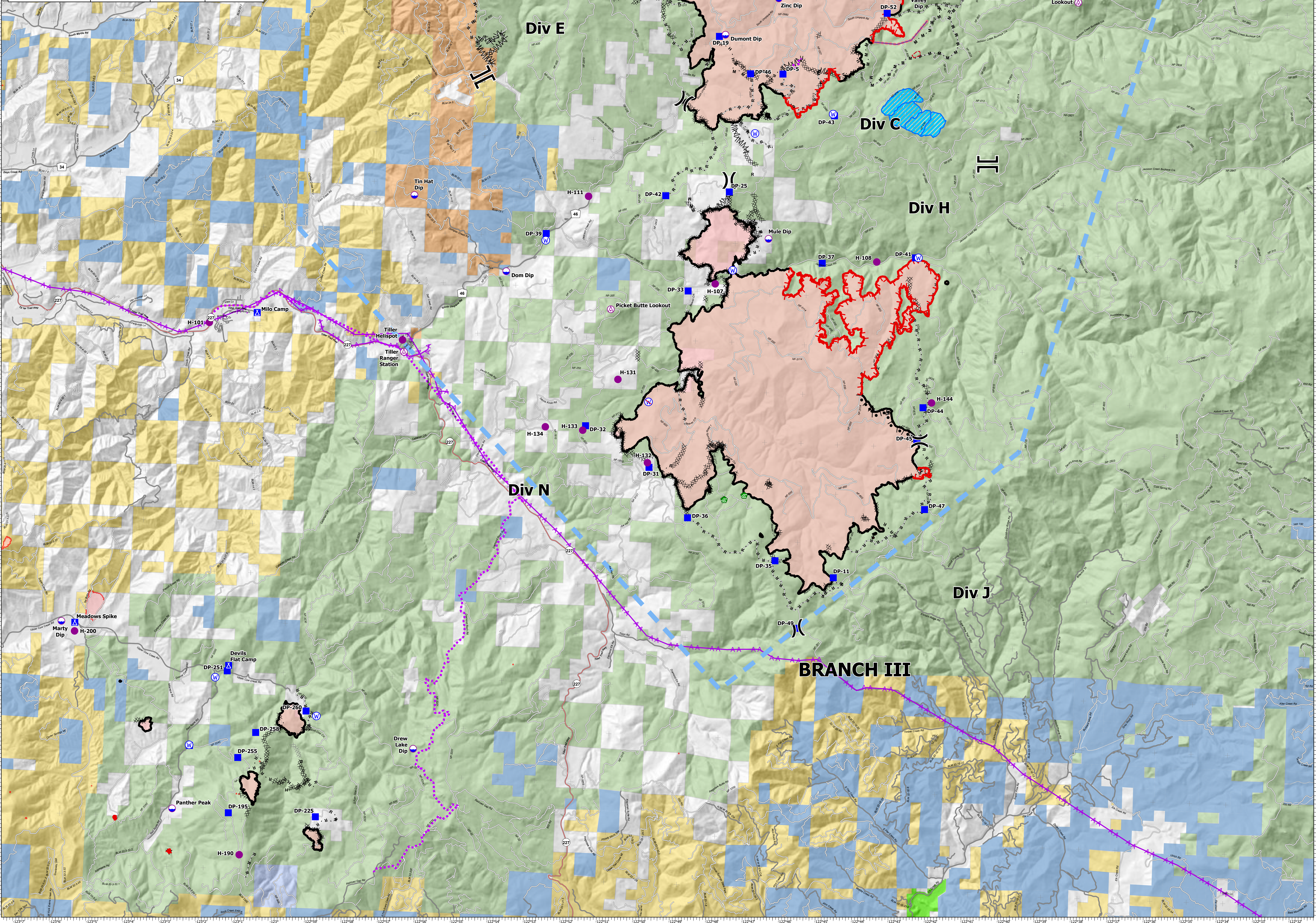


FC Point Type	Label	Latitude WGS84 DDM	Longitude WGS84 DDM
Aerial Hazard	Acker Rock Lookout	43° 03.128' N	122° 38.773' W
Aerial Hazard	Communications Tower	43° 09.942' N	122° 52.851' W
Aerial Hazard	Communications Tower	42° 43.715' N	122° 36.486' W
Aerial Hazard	Picket Butte Lookout	42° 56.027' N	122° 51.363' W
Aerial Hazard	Tiller Ranger Station	42° 55.596' N	122° 57.012' W
Camp	Devils Flat Camp	42° 49.126' N	123° 01.509' W
Camp	Meadows Spike	42° 49.880' N	123° 05.779' W
Camp	Milo Camp	42° 56.280' N	123° 01.888' W
Dip Site	Ash Valley Dip	43° 03.352' N	122° 43.122' W
Dip Site	Dom Dip	42° 57.300' N	122° 54.278' W
Dip Site	Drew Lake Dip	42° 47.580' N	122° 56.360' W
Dip Site	Dumont Dip	43° 02.237' N	122° 48.470' W
Dip Site	Galley East Dip	42° 59.585' N	122° 59.622' W
Dip Site	Marty Dip	42° 49.898' N	123° 06.148' W
Dip Site	Mule Dip	42° 58.141' N	122° 47.089' W
Dip Site	Panther Peak	42° 46.193' N	123° 02.914' W
Dip Site	Red Top Dip	43° 04.940' N	122° 57.395' W
Dip Site	Tin Hat Dip	42° 58.773' N	122° 56.880' W
Dip Site	Zinc Dip	43° 03.010' N	122° 47.035' W
Drop Point	DP-11	42° 51.337' N	122° 44.987' W
Drop Point	DP-12	43° 05.665' N	122° 51.282' W
Drop Point	DP-13	43° 08.413' N	122° 52.885' W
Drop Point	DP-14	43° 05.970' N	122° 54.500' W
Drop Point	DP-16	43° 04.741' N	122° 57.337' W
Drop Point	DP-18	43° 03.448' N	122° 49.317' W
Drop Point	DP-19	43° 02.200' N	122° 48.635' W
Drop Point	DP-19S	42° 46.164' N	122° 49.252' W
Drop Point	DP-22S	42° 46.132' N	122° 58.974' W
Drop Point	DP-25	42° 59.063' N	122° 48.212' W
Drop Point	DP-251	42° 49.015' N	123° 01.543' W
Drop Point	DP-253	42° 47.478' N	123° 02.501' W
Drop Point	DP-255	42° 47.911' N	123° 00.698' W
Drop Point	DP-258	42° 47.791' N	123° 00.698' W
Drop Point	DP-26	43° 10.299' N	122° 48.225' W
Drop Point	DP-260	42° 48.264' N	122° 59.338' W
Drop Point	DP-27	43° 12.318' N	122° 49.386' W
Drop Point	DP-28	43° 10.448' N	122° 51.063' W
Drop Point	DP-29	43° 08.562' N	122° 50.020' W
Drop Point	DP-31	42° 53.439' N	122° 50.158' W
Drop Point	DP-32	42° 54.235' N	122° 51.943' W
Drop Point	DP-33	42° 57.037' N	122° 49.252' W
Drop Point	DP-35	42° 51.640' N	122° 46.605' W
Drop Point	DP-36	42° 52.447' N	122° 49.050' W
Drop Point	DP-37	42° 57.687' N	122° 45.587' W
Drop Point	DP-39	42° 58.093' N	122° 53.213' W
Drop Point	DP-41	42° 59.861' N	122° 49.252' W
Drop Point	DP-42	42° 58.942' N	122° 49.960' W
Drop Point	DP-43	43° 00.675' N	122° 45.389' W
Drop Point	DP-44	42° 54.836' N	122° 42.679' W
Drop Point	DP-45	42° 58.177' N	122° 42.820' W
Drop Point	DP-46	43° 01.466' N	122° 47.740' W
Drop Point	DP-47	42° 52.778' N	122° 42.542' W
Drop Point	DP-49	42° 50.291' N	122° 45.839' W
Drop Point	DP-5	43° 01.483' N	122° 46.848' W
Drop Point	DP-53	43° 02.783' N	122° 44.033' W
Drop Point	DP-7	43° 04.855' N	122° 46.563' W
Drop Point	DP-8	43° 06.276' N	122° 41.704' W
Drop Point	DP-9	43° 08.402' N	122° 47.208' W
Helibase	Days Creek Helibase	42° 58.646' N	123° 09.252' W
Helibase	Ash Valley Helibase	43° 03.367' N	122° 43.150' W
Helispot	H-101	42° 56.045' N	123° 02.395' W
Helispot	H-107	42° 57.195' N	122° 48.513' W
Helispot	H-108	42° 57.750' N	122° 44.087' W
Helispot	H-111	42° 58.875' N	122° 52.085' W
Helispot	H-115	43° 01.353' N	122° 51.098' W
Helispot	H-116	43° 07.287' N	122° 54.358' W
Helispot	H-119	43° 08.735' N	122° 46.373' W
Helispot	H-121	43° 03.218' N	122° 46.568' W
Helispot	H-122	43° 03.303' N	122° 41.432' W
Helispot	H-131	42° 55.195' N	122° 51.098' W
Helispot	H-132	42° 53.532' N	122° 50.205' W
Helispot	H-133	42° 54.143' N	122° 52.017' W
Helispot	H-134	42° 54.185' N	122° 53.048' W
Helispot	H-144	42° 54.938' N	122° 42.448' W
Helispot	H-190	42° 45.308' N	123° 01.025' W
Helispot	H-200	42° 49.705' N	123° 05.777' W
Helispot	Tiller Helispot	42° 55.837' N	122° 57.063' W
Restricted Water Source		42° 54.762' N	122° 50.235' W
Water Development or Draft Site		42° 52.943' N	122° 47.516' W
Water Development or Draft Site		42° 52.843' N	122° 48.061' W
Water Source		42° 48.878' N	123° 01.867' W
Water Source		42° 47.491' N	123° 02.513' W
Water Source		42° 48.170' N	122° 59.048' W
Water Source		42° 57.482' N	122° 48.046' W
Water Source		42° 57.955' N	122° 53.221' W
Water Source		43° 07.109' N	122° 54.991' W
Water Source		43° 00.263' N	122° 47.562' W
Water Source		43° 00.709' N	122° 45.428' W
Water Source		42° 57.862' N	122° 42.944' W
Water Source		43° 09.475' N	122° 50.092' W
Water Source		43° 04.995' N	122° 57.317' W



Air Operations

Devils Knob Complex
60,099 Acres
September 9, 2021



RMIMT Type 1
9/8/2021 2100
North American 1983 Datum.

- Helispot
- Water Source
- Planned Dozer Line
- Private Timber Companies
- Paved Roads
- Water Development or Draft Site
- Aerial Hazard
- Restricted Water Source
- Dip Site
- Aerial Hazard
- Helispot
- Dip Site
- Drop Point
- Camp
- Water Development or Draft Site
- Restricted Water Source
- Completed Burnout
- Completed Dozer Line
- Completed Fuel Break
- Completed Hand Line
- Completed Mixed Construction Line
- Completed Road as Line
- Planned Hand Line
- Planned Mixed Construction Line
- Planned Road as Line
- Fence
- Road Repair
- Aerial Hazard
- Temporary Flight Restriction
- Fire Edge
- Contained Line
- Wildfire Daily Fire Perimeter
- Experimental Forest Watershed
- Secondary Highway
- U.S. Forest Service
- Bureau of Indian Affairs
- Other Federal
- State
- Private/Unknown
- Experimental Forest Watershed
- Secondary Highway