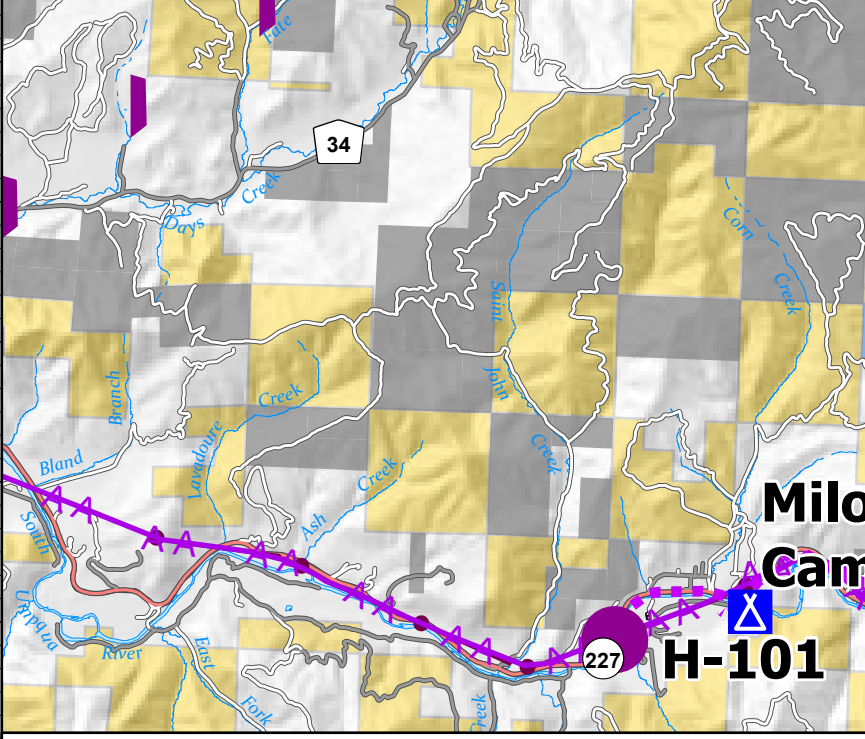
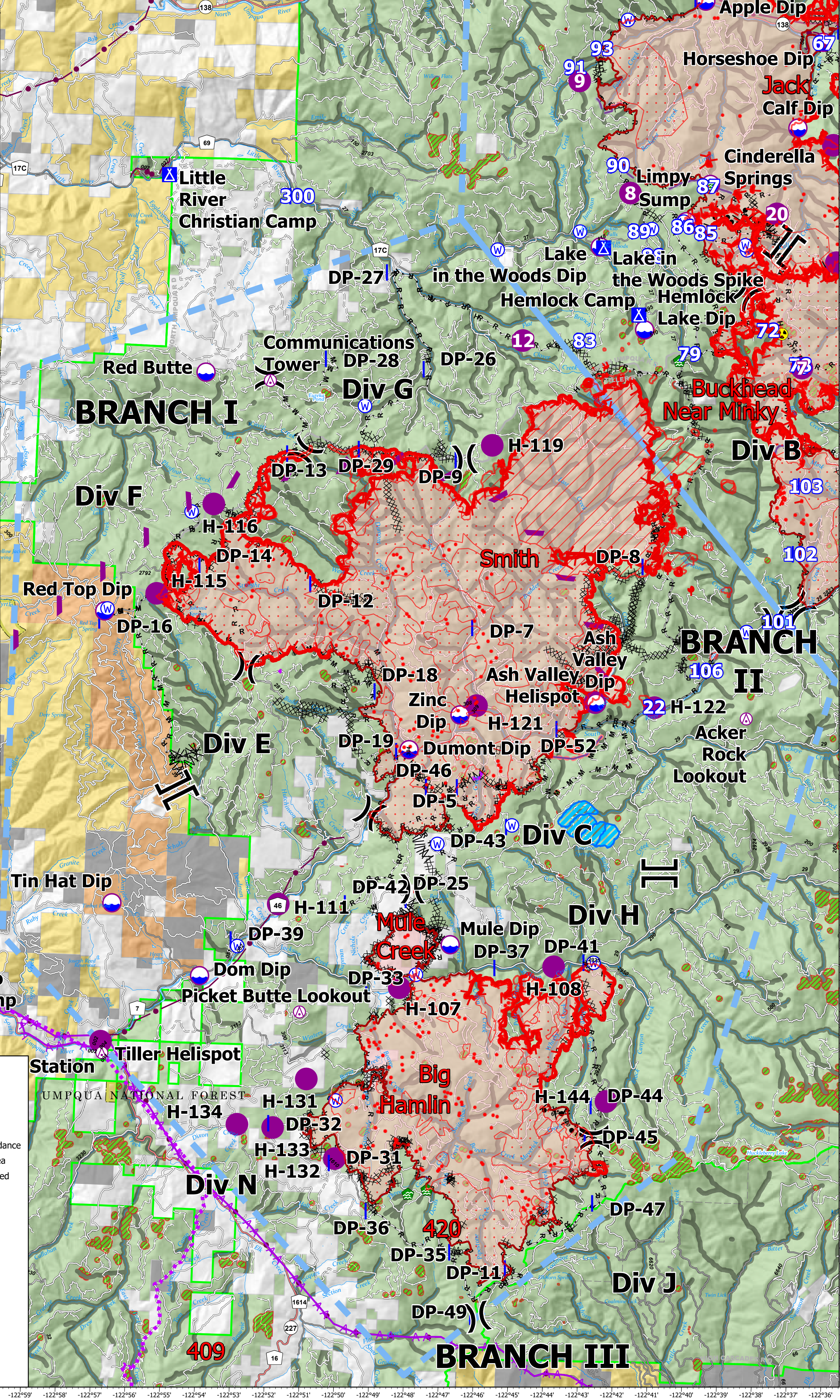


FC Point Type	Label	Latitude WGS84 DDM	Longitude WGS84 DDM
Aerial Hazard	Acker Rock Lookout	43° 03.128' N	122° 38.773' W
Aerial Hazard	Communications Tower	43° 09.942' N	122° 52.851' W
Aerial Hazard	Communications Tower	42° 43.716' N	122° 36.486' W
Aerial Hazard	Picket Butte Lookout	42° 56.607' N	122° 51.363' W
Aerial Hazard	Tiller Ranger Station	42° 55.596' N	122° 57.012' W
Camp	Devils Flat Camp	42° 49.126' N	123° 01.509' W
Camp	Meadows Spike	42° 49.880' N	123° 05.779' W
Camp	Milo Camp	42° 56.280' N	123° 01.088' W
Dip Site	Ash Valley Dip	43° 03.352' N	122° 43.122' W
Dip Site	Dom Dip	42° 57.300' N	122° 54.278' W
Dip Site	Drew Lake Dip	42° 47.580' N	122° 56.360' W
Dip Site	Dumont Dip	43° 02.237' N	122° 48.470' W
Dip Site	Gales East Dip	42° 50.585' N	123° 09.622' W
Dip Site	Marty Dip	42° 49.898' N	123° 06.148' W
Dip Site	Mule Dip	42° 58.141' N	122° 47.089' W
Dip Site	Panther Peak	42° 46.193' N	123° 02.914' W
Dip Site	Red Top Dip	43° 04.940' N	122° 57.395' W
Dip Site	Tin Hat Dip	42° 58.773' N	122° 56.880' W
Dip Site	Zinc Dip	43° 03.010' N	122° 47.035' W
Drop Point	DP-11	42° 51.337' N	122° 44.987' W
Drop Point	DP-12	43° 05.665' N	122° 51.282' W
Drop Point	DP-13	43° 08.413' N	122° 52.085' W
Drop Point	DP-14	43° 05.970' N	122° 54.500' W
Drop Point	DP-16	43° 04.741' N	122° 57.337' W
Drop Point	DP-18	43° 03.448' N	122° 49.317' W
Drop Point	DP-19	43° 02.200' N	122° 48.635' W
Drop Point	DP-19S	42° 46.148' N	123° 01.366' W
Drop Point	DP-22S	42° 46.132' N	122° 58.974' W
Drop Point	DP-25	42° 59.063' N	122° 48.212' W
Drop Point	DP-251	42° 49.015' N	122° 01.543' W
Drop Point	DP-253	42° 47.478' N	122° 02.501' W
Drop Point	DP-255	42° 47.272' N	123° 01.164' W
Drop Point	DP-258	42° 47.751' N	122° 06.698' W
Drop Point	DP-26	43° 10.299' N	122° 48.225' W
Drop Point	DP-260	42° 48.264' N	122° 59.338' W
Drop Point	DP-27	43° 12.319' N	122° 49.386' W
Drop Point	DP-28	43° 10.448' N	122° 51.063' W
Drop Point	DP-29	43° 08.562' N	122° 50.020' W
Drop Point	DP-31	42° 53.439' N	122° 50.158' W
Drop Point	DP-32	42° 54.235' N	122° 51.943' W
Drop Point	DP-33	42° 57.032' N	122° 49.252' W
Drop Point	DP-35	42° 51.640' N	122° 46.605' W
Drop Point	DP-36	42° 52.447' N	122° 49.050' W
Drop Point	DP-37	42° 57.687' N	122° 45.587' W
Drop Point	DP-39	42° 58.093' N	122° 53.213' W
Drop Point	DP-41	42° 57.860' N	122° 43.025' W
Drop Point	DP-42	42° 58.942' N	122° 49.960' W
Drop Point	DP-43	43° 06.675' N	122° 45.389' W
Drop Point	DP-44	42° 54.836' N	122° 42.679' W
Drop Point	DP-45	42° 54.177' N	122° 42.820' W
Drop Point	DP-46	43° 01.466' N	122° 47.740' W
Drop Point	DP-47	42° 52.778' N	122° 42.543' W
Drop Point	DP-49	42° 50.291' N	122° 45.939' W
Drop Point	DP-5	43° 01.483' N	122° 46.448' W
Drop Point	DP-52	43° 02.783' N	122° 44.033' W
Drop Point	DP-7	43° 04.865' N	122° 46.563' W
Drop Point	DP-8	43° 06.276' N	122° 41.704' W
Drop Point	DP-9	43° 08.402' N	122° 47.208' W
Helibase	Days Creek Helibase	42° 58.646' N	122° 09.252' W
Helispot	Ash Valley Helispot	43° 03.367' N	122° 43.150' W
Helispot	H-101	42° 56.045' N	122° 02.395' W
Helispot	H-107	42° 57.195' N	122° 48.513' W
Helispot	H-108	42° 57.750' N	122° 44.087' W
Helispot	H-111	42° 58.875' N	122° 52.085' W
Helispot	H-115	43° 05.353' N	122° 55.913' W
Helispot	H-116	43° 07.287' N	122° 54.358' W
Helispot	H-119	43° 08.735' N	122° 46.373' W
Helispot	H-121	43° 03.218' N	122° 46.568' W
Helispot	H-122	43° 03.303' N	122° 41.432' W
Helispot	H-131	42° 55.195' N	122° 51.098' W
Helispot	H-132	42° 53.532' N	122° 50.205' W
Helispot	H-133	42° 54.143' N	122° 52.017' W
Helispot	H-134	42° 54.185' N	122° 53.048' W
Helispot	H-144	42° 54.938' N	122° 42.448' W
Helispot	H-190	42° 45.308' N	123° 01.025' W
Helispot	H-200	42° 49.705' N	123° 05.777' W
Helispot	Tiller Helispot	42° 55.837' N	122° 50.063' W
Restricted Water Source		42° 54.762' N	122° 50.235' W
Water Development or Draft Site		42° 52.943' N	122° 47.516' W
Water Development or Draft Site		42° 52.843' N	122° 48.061' W
Water Source		42° 48.878' N	123° 01.867' W
Water Source		42° 47.491' N	123° 02.513' W
Water Source		42° 48.170' N	122° 59.048' W
Water Source		42° 57.482' N	122° 48.046' W
Water Source		42° 57.955' N	122° 53.221' W
Water Source		43° 07.109' N	122° 54.991' W
Water Source		43° 00.263' N	122° 47.562' W
Water Source		43° 00.709' N	122° 45.428' W
Water Source		42° 57.862' N	122° 42.944' W
Water Source		43° 09.475' N	122° 50.092' W
Water Source		43° 04.995' N	122° 57.317' W



>> Helicopter Route  
 Utility Power Lines  
 Aerial Hazard  
 Dip Site  
 Helispot  
 ) ( Division Break  
 || Branch Break  
 Drop Point  
 Camp  
 Water Dev or Draft Site  
 Hazard  
 Water Source  
 Restricted Water Source  
 Completed Burnout  
 Completed Dozer Line  
 Completed Fuel Break  
 Completed Hand Line  
 Completed Mixed Const Line  
 Completed Road as Line  
 Retardant Drop  
 Route  
 Temporary Flight Restriction  
 Fire Edge  
 Contained Line  
 TECPS Aerial Retardant Avoidance  
 Fire Retardant Avoidance Area  
 Experimental Forest Watershed  
 Private Timber Companies  
 IR 9/8/21 @ 2021  
 IR Isolated Heat Source  
 Possible IR Heat Source  
 IR Heat Perimeter  
 IR Intense Heat  
 IR Scattered Heat  
 Event Polygon  
 Polygon Type  
 Wildfire Daily Fire Perimeter



**Pilot**  
 Devils Knob Complex  
 60,099 Acres  
 September 9, 2021



RMIT Type 1  
 9/9/2021 0725  
 North American 1983 Datum

North arrow pointing up, labeled 'N'.  
 QR code.  
 Scale bar showing 0, 2, and 4 miles.