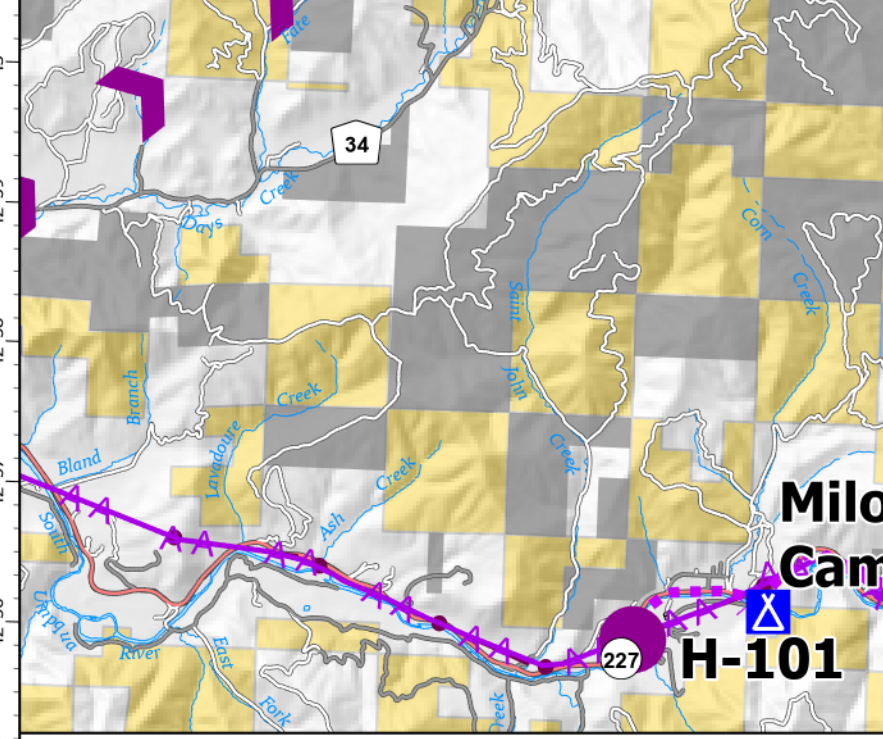
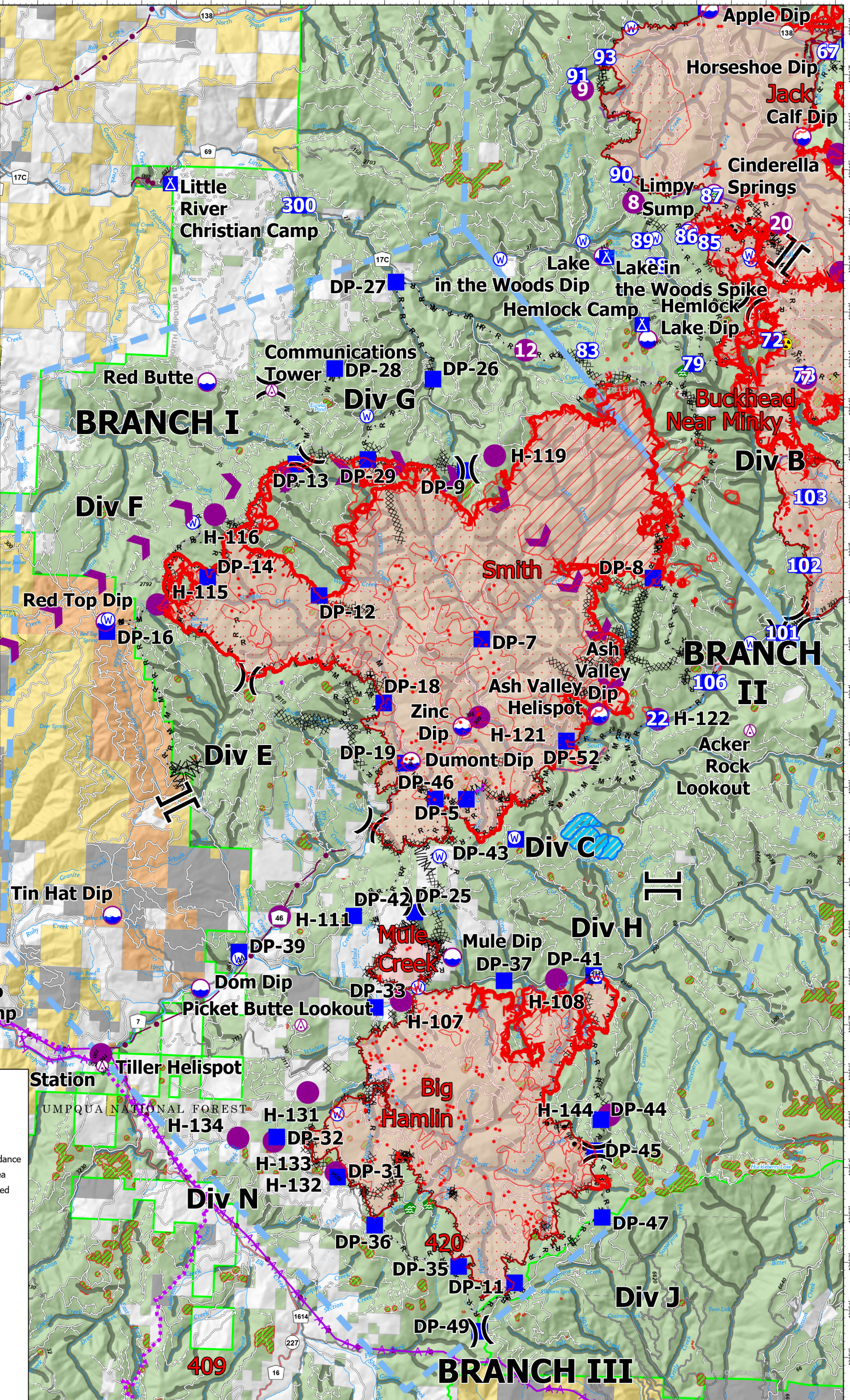


FC Point Type	Label	Latitude WGS84 DDM	Longitude WGS84 DDM
Aerial Hazard	Acker Rock Lookout	43° 03.128' N	122° 38.773' W
Aerial Hazard	Communications Tower	43° 09.942' N	122° 52.851' W
Aerial Hazard	Communications Tower	42° 43.716' N	122° 36.486' W
Aerial Hazard	Picket Butte Lookout	42° 56.607' N	122° 51.363' W
Aerial Hazard	Tiller Ranger Station	42° 55.596' N	122° 57.012' W
Camp	Devils Flat Camp	42° 49.126' N	123° 01.509' W
Camp	Meadows Spike	42° 49.880' N	123° 05.779' W
Camp	Milo Camp	42° 56.280' N	123° 01.088' W
Dip Site	Ash Valley Dip	43° 03.352' N	122° 43.122' W
Dip Site	Dom Dip	42° 57.300' N	122° 54.278' W
Dip Site	Drew Lake Dip	42° 47.580' N	122° 56.360' W
Dip Site	Dumont Dip	43° 02.237' N	122° 48.470' W
Dip Site	Gales East Dip	42° 50.585' N	123° 09.622' W
Dip Site	Marty Dip	42° 49.898' N	123° 06.148' W
Dip Site	Mule Dip	42° 58.141' N	122° 47.089' W
Dip Site	Panther Peak	42° 46.193' N	123° 02.914' W
Dip Site	Red Top Dip	43° 04.940' N	122° 57.395' W
Dip Site	Tin Hat Dip	42° 58.773' N	122° 56.880' W
Dip Site	Zinc Dip	43° 03.010' N	122° 47.035' W
Drop Point	DP-11	42° 51.337' N	122° 44.987' W
Drop Point	DP-12	43° 05.665' N	122° 51.282' W
Drop Point	DP-13	43° 08.413' N	122° 52.085' W
Drop Point	DP-14	43° 05.970' N	122° 54.500' W
Drop Point	DP-16	43° 04.741' N	122° 57.337' W
Drop Point	DP-18	43° 03.448' N	122° 49.317' W
Drop Point	DP-19	43° 02.200' N	122° 48.635' W
Drop Point	DP-19S	42° 46.148' N	123° 01.366' W
Drop Point	DP-22S	42° 46.132' N	122° 58.974' W
Drop Point	DP-25	42° 59.063' N	122° 48.217' W
Drop Point	DP-251	42° 49.015' N	123° 01.543' W
Drop Point	DP-253	42° 47.478' N	123° 02.501' W
Drop Point	DP-255	42° 47.272' N	123° 01.164' W
Drop Point	DP-258	42° 47.791' N	123° 00.698' W
Drop Point	DP-26	43° 10.299' N	122° 48.225' W
Drop Point	DP-260	42° 48.264' N	122° 59.338' W
Drop Point	DP-27	43° 12.319' N	122° 49.386' W
Drop Point	DP-28	43° 10.448' N	122° 51.063' W
Drop Point	DP-29	43° 08.562' N	122° 50.020' W
Drop Point	DP-31	42° 53.439' N	122° 50.158' W
Drop Point	DP-32	42° 54.235' N	122° 51.943' W
Drop Point	DP-33	42° 57.032' N	122° 49.252' W
Drop Point	DP-35	42° 51.640' N	122° 46.605' W
Drop Point	DP-36	42° 52.447' N	122° 49.050' W
Drop Point	DP-37	42° 57.687' N	122° 45.587' W
Drop Point	DP-39	42° 58.093' N	122° 53.213' W
Drop Point	DP-41	42° 57.860' N	122° 43.025' W
Drop Point	DP-42	42° 58.942' N	122° 49.960' W
Drop Point	DP-43	43° 00.675' N	122° 45.389' W
Drop Point	DP-44	42° 54.836' N	122° 42.679' W
Drop Point	DP-45	42° 54.177' N	122° 42.820' W
Drop Point	DP-46	43° 01.466' N	122° 47.740' W
Drop Point	DP-47	42° 52.778' N	122° 42.542' W
Drop Point	DP-49	42° 50.291' N	122° 45.939' W
Drop Point	DP-5	43° 01.483' N	122° 46.488' W
Drop Point	DP-52	43° 02.783' N	122° 44.033' W
Drop Point	DP-7	43° 04.865' N	122° 46.563' W
Drop Point	DP-8	43° 06.276' N	122° 41.704' W
Drop Point	DP-9	43° 08.402' N	122° 47.208' W
Helibase	Days Creek Helibase	42° 58.646' N	123° 09.252' W
Helispot	Ash Valley Helispot	43° 03.367' N	122° 43.150' W
Helispot	H-101	42° 56.045' N	123° 02.395' W
Helispot	H-107	42° 57.195' N	122° 48.513' W
Helispot	H-108	42° 57.750' N	122° 44.087' W
Helispot	H-111	42° 58.875' N	122° 50.085' W
Helispot	H-115	43° 05.353' N	122° 55.913' W
Helispot	H-116	43° 07.287' N	122° 54.358' W
Helispot	H-119	43° 08.735' N	122° 46.373' W
Helispot	H-121	43° 03.218' N	122° 46.568' W
Helispot	H-122	43° 03.303' N	122° 41.432' W
Helispot	H-131	42° 55.195' N	122° 51.098' W
Helispot	H-132	42° 53.532' N	122° 50.205' W
Helispot	H-133	42° 54.143' N	122° 50.017' W
Helispot	H-134	42° 54.185' N	122° 53.048' W
Helispot	H-144	42° 54.938' N	122° 42.448' W
Helispot	H-190	42° 45.308' N	123° 01.025' W
Helispot	H-200	42° 49.705' N	122° 50.777' W
Helispot	Tiller Helispot	42° 55.837' N	122° 50.235' W
Restricted Water Source		42° 54.762' N	122° 50.235' W
Water Development or Draft Site		42° 52.943' N	122° 47.516' W
Water Development or Draft Site		42° 52.843' N	122° 48.061' W
Water Source		42° 48.878' N	123° 01.867' W
Water Source		42° 47.491' N	123° 02.513' W
Water Source		42° 48.170' N	122° 59.048' W
Water Source		42° 57.482' N	122° 48.046' W
Water Source		42° 57.955' N	122° 53.221' W
Water Source		43° 07.109' N	122° 54.991' W
Water Source		43° 00.263' N	122° 47.562' W
Water Source		43° 00.709' N	122° 45.428' W
Water Source		42° 57.862' N	122° 42.944' W
Water Source		43° 09.475' N	122° 50.092' W
Water Source		43° 04.995' N	122° 57.317' W



Legend
 Helicopter Route (Red arrow)
 Utility Power Lines (Black line)
 Aerial Hazard (Red circle with 'A')
 Dip Site (Blue circle with 'D')
 Helispot (Purple circle)
 Division Break (Black line with 'D')
 Branch Break (Black line with 'B')
 Drop Point (Blue square)
 Camp (Green triangle)
 Water Dev or Draft Site (Blue circle with 'W')
 Hazard (Yellow circle with 'H')
 Restricted Water Source (Blue circle with 'R')
 Completed Burnout (Black line with 'C')
 Completed Dozer Line (Black line with 'D')
 Completed Fuel Break (Black line with 'F')
 Completed Hand Line (Black line with 'H')
 Completed Mixed Const Line (Black line with 'M')
 Completed Road as Line (Black line with 'R')
 Retardant Drop (Red dashed line)
 Route (Red solid line)
 Temporary Flight Restriction (Blue dashed line)
 Fire Edge (Red solid line)
 Contained Line (Black solid line)
 TECPS Aerial Retardant Avoidance (Green hatched area)
 Fire Retardant Avoidance Area (Grey hatched area)
 Experimental Forest Watershed (Blue hatched area)
 Private Timber Companies (Black hatched area)
 IR 9/8/21 @ 2021
 IR Isolated Heat Source (Red diamond)
 Possible IR Heat Source (Red square)
 IR Heat Perimeter (Red outline)
 IR Intense Heat (Red outline with 'I')
 IR Scattered Heat (Red outline with 'S')
 Event Polygon (Red outline)
 Polygone Type (Red outline)
 Wildfire Daily Fire Perimeter (Red outline)



Pilot
 Devils Knob Complex
 60,099 Acres
 September 9, 2021



RMIT Type 1
 9/9/2021 0725
 North American 1983 Datum

North arrow pointing up, labeled 'N'.
 QR code.
 Scale bar showing 0, 2, and 4 miles.