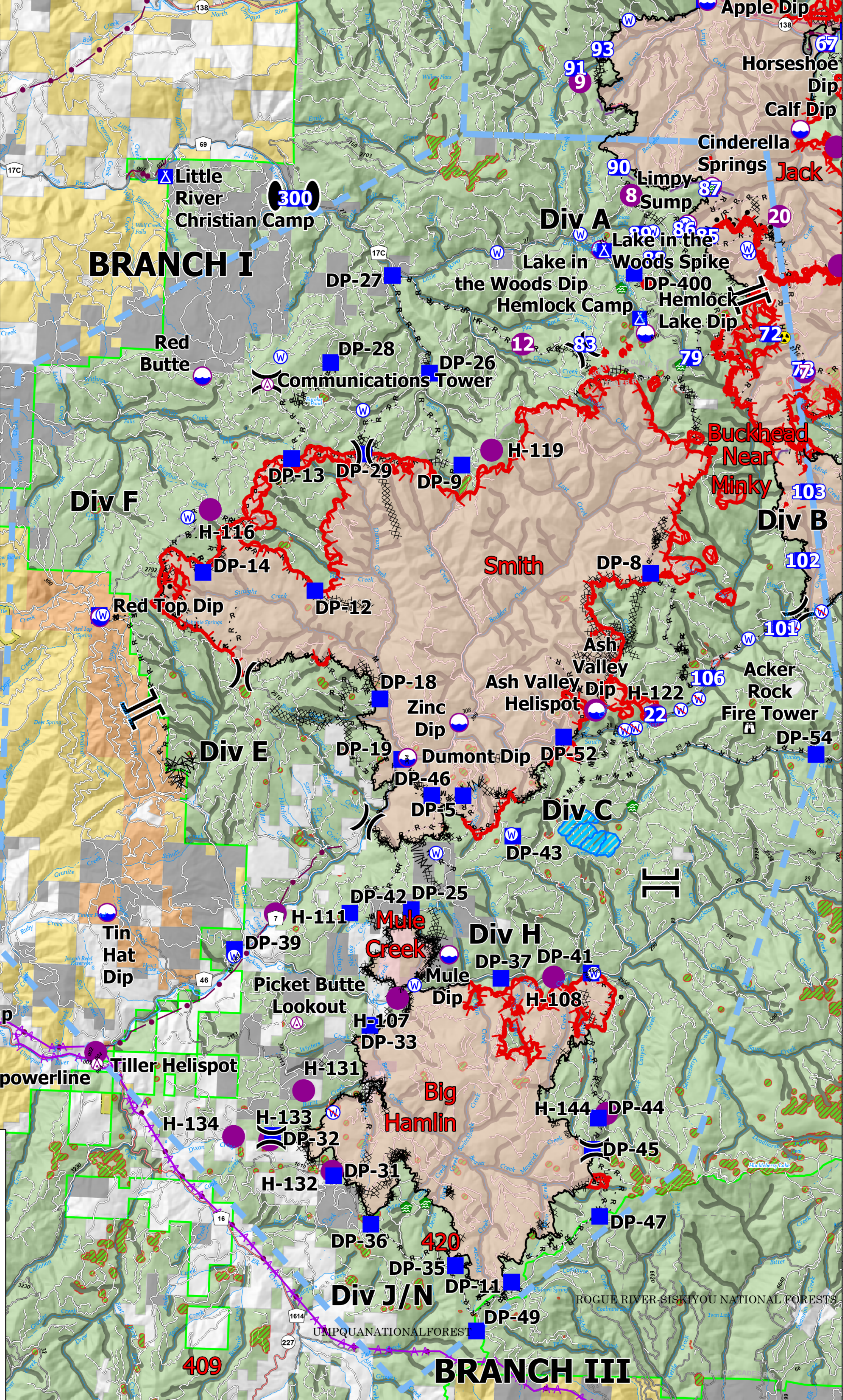


| FC Point Type | Label | Latitude WGS84 DDM | Longitude WGS84 DDM |
|---------------------|-----------------------|--------------------|---------------------|
| Aerial Hazard | Communications Tower | 43° 09.942' N | 122° 52.851' W |
| Aerial Hazard | Picket Butte Lookout | 42° 56.607' N | 122° 51.363' W |
| Aerial Hazard | powerline | 42° 55.596' N | 122° 57.012' W |
| Airstrip or Airport | Roseburg Airport | 43° 14.360' N | 123° 21.351' W |
| Dip Site | Ash Valley Dip | 43° 03.352' N | 122° 43.122' W |
| Dip Site | Dumont Dip | 43° 02.237' N | 122° 48.470' W |
| Dip Site | Mule Dip | 42° 58.141' N | 122° 47.089' W |
| Dip Site | Red Top Dip | 43° 04.940' N | 122° 57.395' W |
| Dip Site | Tin Hat Dip | 42° 58.773' N | 122° 56.880' W |
| Dip Site | Zinc Dip | 43° 03.010' N | 122° 47.035' W |
| Drop Point | DP-11 | 42° 51.337' N | 122° 44.987' W |
| Drop Point | DP-12 | 43° 05.665' N | 122° 51.282' W |
| Drop Point | DP-13 | 43° 08.413' N | 122° 52.085' W |
| Drop Point | DP-14 | 43° 05.970' N | 122° 54.500' W |
| Drop Point | DP-16 | 43° 04.741' N | 122° 57.337' W |
| Drop Point | DP-18 | 43° 03.448' N | 122° 49.317' W |
| Drop Point | DP-19 | 43° 02.200' N | 122° 48.635' W |
| Drop Point | DP-25 | 42° 59.063' N | 122° 48.212' W |
| Drop Point | DP-26 | 43° 10.299' N | 122° 48.225' W |
| Drop Point | DP-27 | 43° 12.319' N | 122° 49.386' W |
| Drop Point | DP-28 | 43° 10.448' N | 122° 51.063' W |
| Drop Point | DP-29 | 43° 08.562' N | 122° 50.020' W |
| Drop Point | DP-31 | 42° 53.439' N | 122° 50.158' W |
| Drop Point | DP-32 | 42° 54.235' N | 122° 51.943' W |
| Drop Point | DP-33 | 42° 57.032' N | 122° 49.252' W |
| Drop Point | DP-35 | 42° 51.640' N | 122° 46.605' W |
| Drop Point | DP-36 | 42° 52.447' N | 122° 49.050' W |
| Drop Point | DP-37 | 42° 57.687' N | 122° 45.587' W |
| Drop Point | DP-39 | 42° 58.093' N | 122° 53.213' W |
| Drop Point | DP-400 | 43° 12.539' N | 122° 42.467' W |
| Drop Point | DP-41 | 42° 57.860' N | 122° 43.025' W |
| Drop Point | DP-42 | 42° 58.942' N | 122° 49.960' W |
| Drop Point | DP-43 | 42° 00.675' N | 122° 45.389' W |
| Drop Point | DP-44 | 42° 54.836' N | 122° 42.679' W |
| Drop Point | DP-45 | 42° 54.177' N | 122° 42.820' W |
| Drop Point | DP-46 | 43° 01.466' N | 122° 47.740' W |
| Drop Point | DP-47 | 42° 52.778' N | 122° 42.542' W |
| Drop Point | DP-49 | 42° 50.291' N | 122° 45.939' W |
| Drop Point | DP-5 | 43° 01.483' N | 122° 46.848' W |
| Drop Point | DP-52 | 43° 02.783' N | 122° 44.033' W |
| Drop Point | DP-54 | 43° 02.594' N | 122° 36.813' W |
| Drop Point | DP-8 | 43° 06.276' N | 122° 41.704' W |
| Drop Point | DP-9 | 43° 08.402' N | 122° 47.208' W |
| Helibase | Days Creek Helibase | 42° 58.646' N | 123° 09.252' W |
| Helispot | Ash Valley Helispot | 43° 03.367' N | 122° 43.150' W |
| Helispot | H-101 | 42° 56.045' N | 123° 02.395' W |
| Helispot | H-107 | 42° 57.195' N | 122° 48.513' W |
| Helispot | H-108 | 42° 57.750' N | 122° 44.087' W |
| Helispot | H-111 | 42° 58.875' N | 122° 52.085' W |
| Helispot | H-116 | 43° 07.287' N | 122° 54.358' W |
| Helispot | H-119 | 43° 08.735' N | 122° 46.373' W |
| Helispot | H-122 | 43° 03.303' N | 122° 41.432' W |
| Helispot | H-131 | 42° 55.195' N | 122° 51.098' W |
| Helispot | H-132 | 42° 53.532' N | 122° 50.205' W |
| Helispot | H-133 | 42° 54.143' N | 122° 52.017' W |
| Helispot | H-134 | 42° 54.185' N | 122° 53.048' W |
| Helispot | H-144 | 42° 54.938' N | 122° 42.448' W |
| Helispot | Tiller Helispot | 42° 55.837' N | 122° 57.063' W |
| Lookout | Acker Rock Fire Tower | 43° 03.108' N | 122° 38.740' W |

- Utility Power Lines
- Aerial Hazard
- Dip Site
- Helispot
- Sling Site
- Division Break
- Branch Break
- Zone Break
- Incident Command Post
- Drop Point
- Camp
- Lookout
- Water Dev or Draft Site
- Hazard
- Water Source
- Restricted Water Source
- Completed Burnout
- Completed Dozer Line
- Completed Fuel Break
- Completed Hand Line
- Completed Mixed Const Line
- Completed Road as Line
- Aerial Hazard
- Foam Drop
- Retardant Drop
- Fire Edge
- Contained Line
- TECPS Aerial Retardant Avoidance
- Fire Retardant Avoidance Area
- Experimental Forest Watershed
- Private Timber Companies
- Wildfire Daily Fire Perimeter



Pilot
 Devils Knob Complex
 65,058 Acres
 September 13, 2021



RMIMT Type 1
 9/12/2021 2109
 North American 1983 Datum

0 2 4 Miles