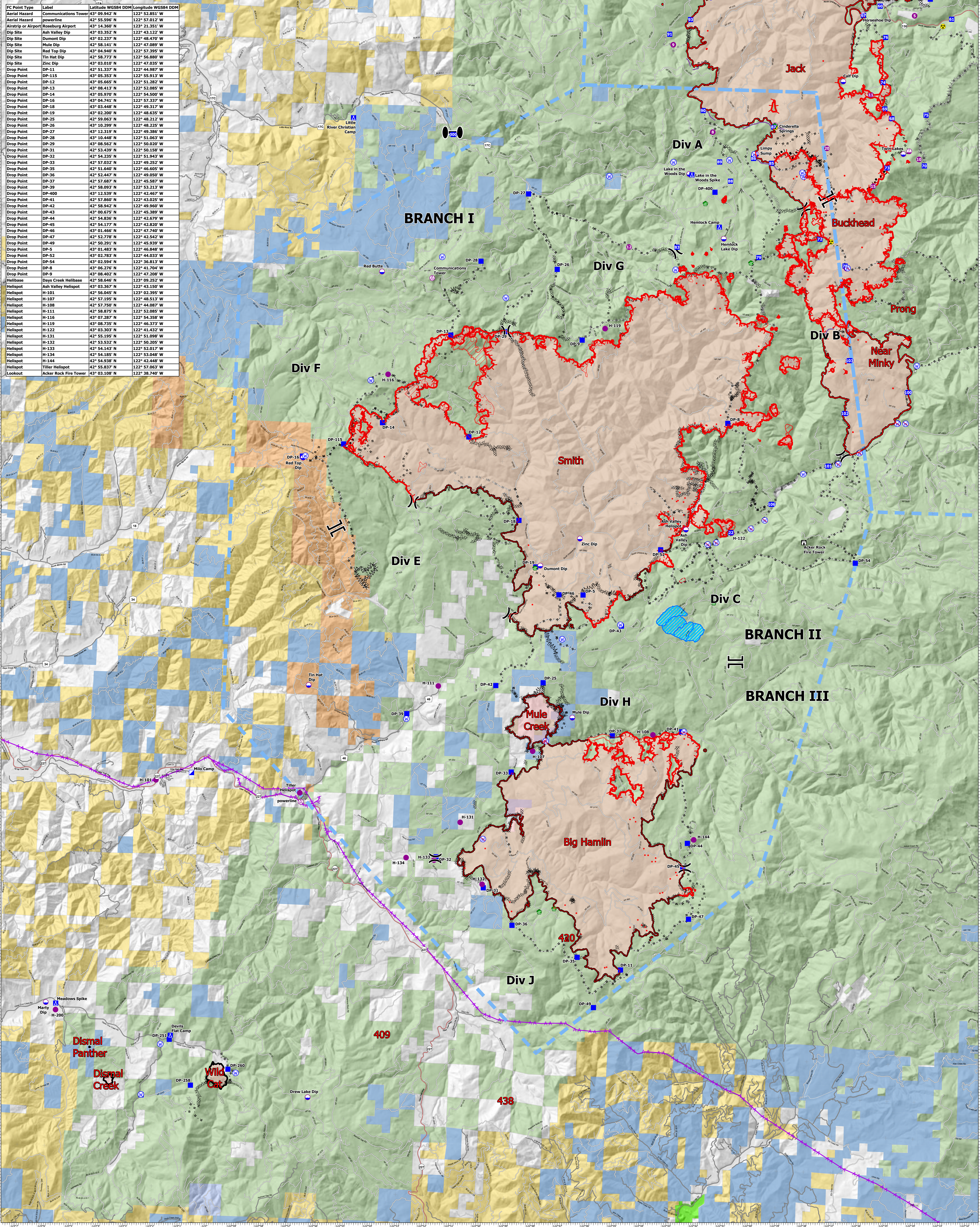


FC Point Type	Label	Latitude WGS84 DDM	Longitude WGS84 DDM
Aerial Hazard	Communications Tower	43° 09.942' N	122° 52.851' W
Aerial Hazard	powerline	42° 55.596' N	122° 57.012' W
Airstrip or Airport	Roseburg Airport	43° 14.360' N	123° 21.351' W
Dip Site	Ash Valley Dip	43° 03.352' N	122° 43.122' W
Dip Site	Dumont Dip	43° 02.237' N	122° 48.470' W
Dip Site	Mule Dip	42° 58.141' N	122° 47.089' W
Dip Site	Red Top Dip	43° 04.940' N	122° 57.395' W
Dip Site	Tin Hat Dip	42° 58.773' N	122° 56.880' W
Dip Site	Zinc Dip	43° 03.010' N	122° 47.035' W
Drop Point	DP-11	42° 51.337' N	122° 44.987' W
Drop Point	DP-115	43° 05.353' N	122° 55.913' W
Drop Point	DP-12	43° 05.665' N	122° 51.282' W
Drop Point	DP-13	43° 08.413' N	122° 52.085' W
Drop Point	DP-14	43° 05.970' N	122° 54.500' W
Drop Point	DP-16	43° 04.741' N	122° 57.337' W
Drop Point	DP-18	43° 03.448' N	122° 49.317' W
Drop Point	DP-19	43° 02.200' N	122° 48.635' W
Drop Point	DP-25	42° 59.063' N	122° 48.212' W
Drop Point	DP-26	43° 10.299' N	122° 48.225' W
Drop Point	DP-27	43° 12.319' N	122° 49.386' W
Drop Point	DP-28	43° 10.448' N	122° 51.063' W
Drop Point	DP-29	43° 08.562' N	122° 50.020' W
Drop Point	DP-31	42° 53.439' N	122° 50.158' W
Drop Point	DP-32	42° 54.235' N	122° 51.943' W
Drop Point	DP-33	42° 57.032' N	122° 49.252' W
Drop Point	DP-35	42° 51.640' N	122° 46.605' W
Drop Point	DP-36	42° 52.447' N	122° 49.050' W
Drop Point	DP-37	42° 57.687' N	122° 45.587' W
Drop Point	DP-39	42° 58.093' N	122° 53.213' W
Drop Point	DP-400	43° 12.539' N	122° 42.467' W
Drop Point	DP-41	42° 57.860' N	122° 43.025' W
Drop Point	DP-42	42° 58.942' N	122° 49.960' W
Drop Point	DP-43	43° 00.675' N	122° 45.389' W
Drop Point	DP-44	42° 54.836' N	122° 42.679' W
Drop Point	DP-45	42° 54.177' N	122° 45.820' W
Drop Point	DP-46	43° 01.466' N	122° 47.740' W
Drop Point	DP-47	42° 52.778' N	122° 42.542' W
Drop Point	DP-49	42° 50.291' N	122° 45.939' W
Drop Point	DP-5	43° 01.483' N	122° 46.848' W
Drop Point	DP-52	43° 02.783' N	122° 44.033' W
Drop Point	DP-54	42° 52.594' N	122° 38.513' W
Drop Point	DP-8	43° 06.276' N	122° 41.704' W
Drop Point	DP-9	43° 08.402' N	122° 47.208' W
Helibase	Days Creek Helibase	42° 58.646' N	122° 09.252' W
Helibase	Ash Valley Helispot	43° 03.367' N	122° 43.150' W
Helispot	H-101	42° 56.045' N	122° 02.395' W
Helispot	H-107	42° 57.195' N	122° 48.513' W
Helispot	H-108	42° 57.750' N	122° 44.087' W
Helispot	H-111	42° 58.875' N	122° 52.085' W
Helispot	H-116	43° 07.287' N	122° 54.358' W
Helispot	H-119	43° 08.735' N	122° 46.373' W
Helispot	H-122	43° 03.303' N	122° 41.432' W
Helispot	H-131	42° 55.195' N	122° 53.998' W
Helispot	H-132	42° 53.533' N	122° 50.200' W
Helispot	H-133	42° 54.143' N	122° 52.017' W
Helispot	H-134	42° 54.185' N	122° 53.048' W
Helispot	H-144	42° 54.938' N	122° 42.448' W
Helispot	Tiller Helispot	42° 55.837' N	122° 57.063' W
Lookout	Acker Rock Fire Tower	43° 03.108' N	122° 38.740' W



**Air Operations**  
 Devils Knob Complex  
 65,766 Acres  
 September 15, 2021



RMIMT Type 1  
 9/15/2021 0550  
 North American 1983 Datum.

- |   |  |   |   |   |   |   |   |   |   |
|---|--|---|---|---|---|---|---|---|---|
| <ul style="list-style-type: none"> <li>IR 09/10/2021 @ 2038 (Jack)</li> <li>Isolated Heat Sources</li> <li>Intense Heat</li> <li>Helispot</li> <li>Aerial Hazard</li> <li>Dip Site</li> <li>Division Break</li> <li>Branch Break</li> </ul> | <ul style="list-style-type: none"> <li>Zone Break</li> <li>Incident Command Post</li> <li>Drop Point</li> <li>Camp</li> <li>Lookout</li> <li>Water Development or Draft Site</li> <li>Water Source</li> <li>Restricted Water Source</li> </ul> | <ul style="list-style-type: none"> <li>Completed Burnout</li> <li>Completed Dozer Line</li> <li>Completed Fuel Break</li> <li>Completed Hand Line</li> <li>Completed Mixed Construction Line</li> <li>Completed Road as Line</li> <li>Planned Dozer Line</li> <li>Planned Fuel Break</li> </ul> | <ul style="list-style-type: none"> <li>Planned Hand Line</li> <li>Planned Mixed Construction Line</li> <li>Planned Road as Line</li> <li>Completed Mixed Construction Line</li> <li>Completed Road as Line</li> <li>Planned Dozer Line</li> <li>Planned Fuel Break</li> </ul> | <ul style="list-style-type: none"> <li>Completed Burnout</li> <li>Completed Dozer Line</li> <li>Completed Fuel Break</li> <li>Completed Hand Line</li> <li>Completed Mixed Construction Line</li> <li>Completed Road as Line</li> <li>Planned Dozer Line</li> <li>Planned Fuel Break</li> </ul> | <ul style="list-style-type: none"> <li>Planned Hand Line</li> <li>Planned Mixed Construction Line</li> <li>Planned Road as Line</li> <li>Completed Mixed Construction Line</li> <li>Completed Road as Line</li> <li>Planned Dozer Line</li> <li>Planned Fuel Break</li> </ul> | <ul style="list-style-type: none"> <li>Completed Burnout</li> <li>Completed Dozer Line</li> <li>Completed Fuel Break</li> <li>Completed Hand Line</li> <li>Completed Mixed Construction Line</li> <li>Completed Road as Line</li> <li>Planned Dozer Line</li> <li>Planned Fuel Break</li> </ul> | <ul style="list-style-type: none"> <li>Planned Hand Line</li> <li>Planned Mixed Construction Line</li> <li>Planned Road as Line</li> <li>Completed Mixed Construction Line</li> <li>Completed Road as Line</li> <li>Planned Dozer Line</li> <li>Planned Fuel Break</li> </ul> | <ul style="list-style-type: none"> <li>Other Federal</li> <li>State</li> <li>Private/Unknown</li> <li>Secondary Highway</li> <li>Paved Roads</li> <li>Dirt (Not Paved)</li> <li>IR 9/14/21 @ 2220</li> <li>IR Isolated Heat Source</li> </ul> | <ul style="list-style-type: none"> <li>IR Heat Perimeter</li> <li>IR Intense Heat</li> <li>IR Scattered Heat</li> </ul> |
|---|--|---|---|---|---|---|---|---|---|