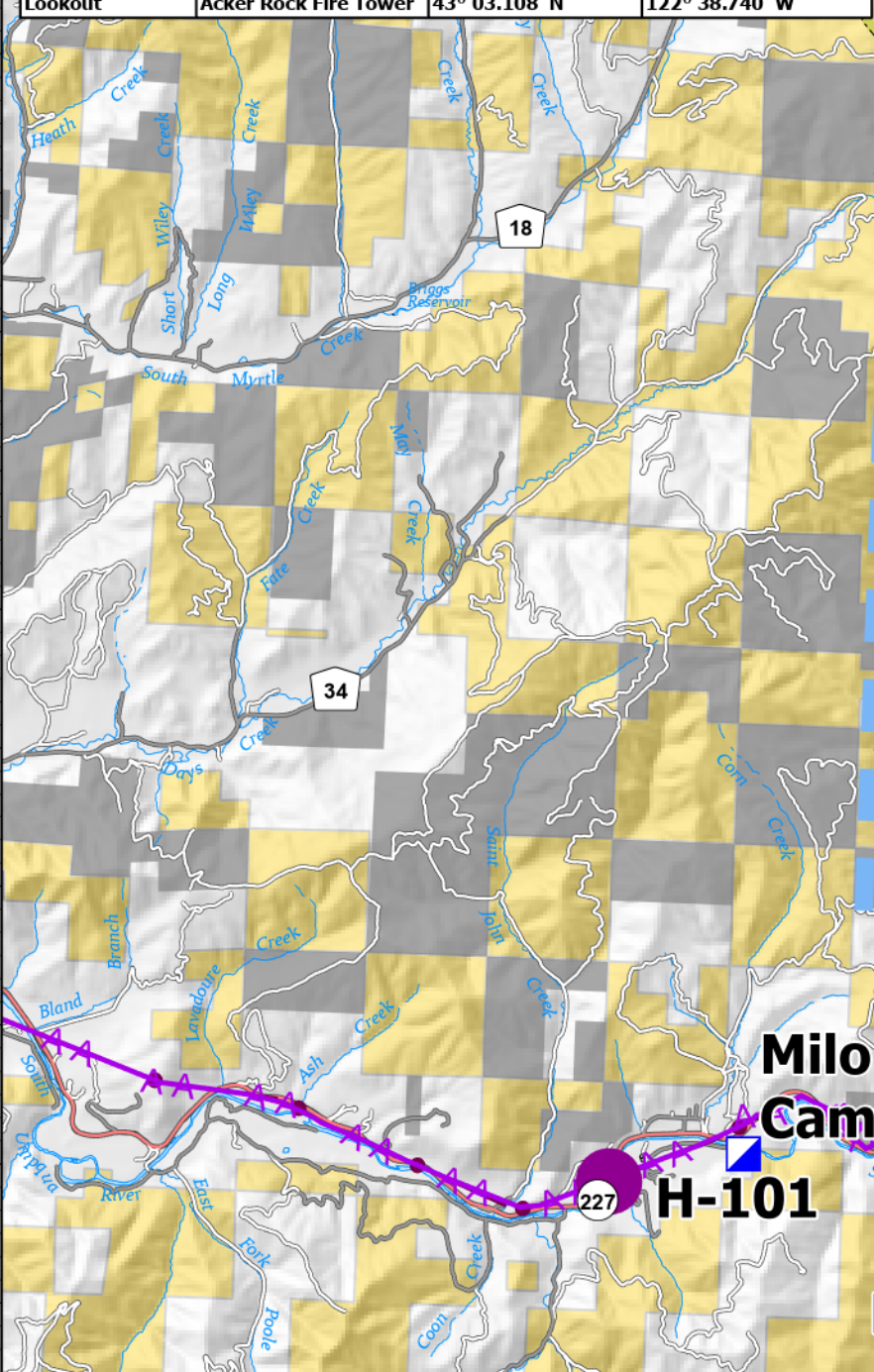
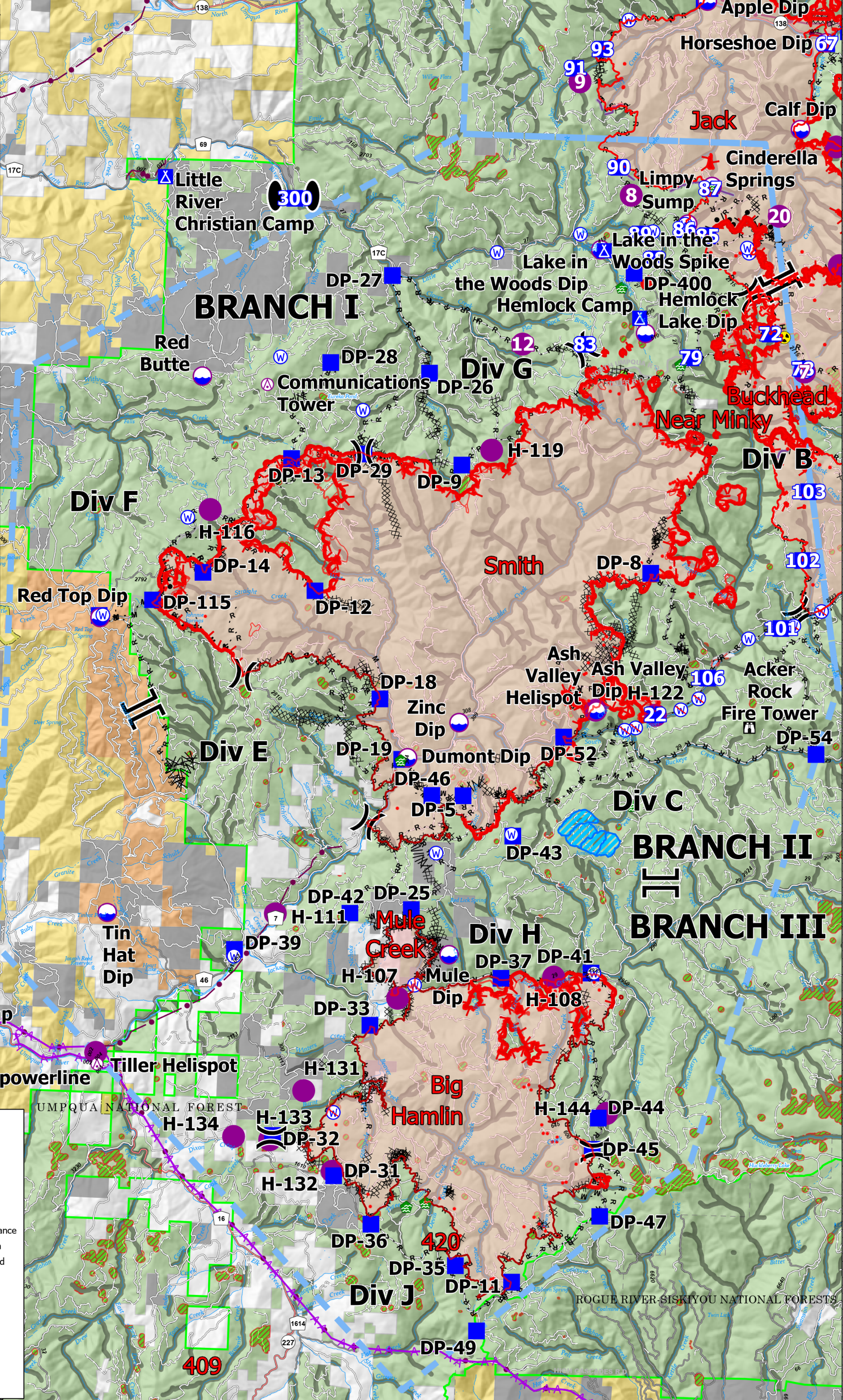


FC Point Type	Label	Latitude WGS84 DDM	Longitude WGS84 DDM
Aerial Hazard	Communications Tower	43° 09.942' N	122° 52.851' W
Aerial Hazard	powerline	42° 55.596' N	122° 57.012' W
Airstrip or Airport	Roseburg Airport	43° 14.360' N	123° 21.351' W
Dip Site	Ash Valley Dip	43° 03.352' N	122° 43.122' W
Dip Site	Dumont Dip	43° 02.237' N	122° 48.470' W
Dip Site	Mule Dip	42° 58.141' N	122° 47.089' W
Dip Site	Red Top Dip	43° 04.940' N	122° 57.395' W
Dip Site	Tin Hat Dip	42° 58.773' N	122° 56.880' W
Dip Site	Zinc Dip	43° 03.010' N	122° 47.035' W
Drop Point	DP-11	42° 51.337' N	122° 44.987' W
Drop Point	DP-115	43° 05.353' N	122° 55.913' W
Drop Point	DP-12	43° 05.665' N	122° 51.282' W
Drop Point	DP-13	43° 08.413' N	122° 52.085' W
Drop Point	DP-14	43° 05.970' N	122° 54.500' W
Drop Point	DP-16	43° 04.741' N	122° 57.337' W
Drop Point	DP-18	43° 03.448' N	122° 49.317' W
Drop Point	DP-19	43° 02.200' N	122° 48.635' W
Drop Point	DP-25	42° 59.063' N	122° 48.212' W
Drop Point	DP-26	43° 10.299' N	122° 48.225' W
Drop Point	DP-27	43° 12.319' N	122° 49.386' W
Drop Point	DP-28	43° 10.448' N	122° 51.063' W
Drop Point	DP-29	43° 08.562' N	122° 50.020' W
Drop Point	DP-31	42° 53.439' N	122° 50.158' W
Drop Point	DP-32	42° 54.235' N	122° 51.943' W
Drop Point	DP-33	42° 57.032' N	122° 49.252' W
Drop Point	DP-35	42° 51.640' N	122° 46.605' W
Drop Point	DP-36	42° 52.447' N	122° 49.050' W
Drop Point	DP-37	42° 57.687' N	122° 45.587' W
Drop Point	DP-39	42° 58.093' N	122° 53.213' W
Drop Point	DP-400	43° 12.539' N	122° 42.467' W
Drop Point	DP-41	42° 57.860' N	122° 43.025' W
Drop Point	DP-42	42° 58.942' N	122° 49.960' W
Drop Point	DP-43	42° 00.675' N	122° 45.389' W
Drop Point	DP-44	42° 54.836' N	122° 42.679' W
Drop Point	DP-45	42° 54.177' N	122° 42.820' W
Drop Point	DP-46	43° 01.466' N	122° 47.740' W
Drop Point	DP-47	42° 52.778' N	122° 42.542' W
Drop Point	DP-49	42° 50.291' N	122° 45.939' W
Drop Point	DP-5	43° 01.483' N	122° 46.848' W
Drop Point	DP-52	43° 02.783' N	122° 44.033' W
Drop Point	DP-54	43° 02.594' N	122° 36.813' W
Drop Point	DP-8	43° 06.276' N	122° 41.704' W
Drop Point	DP-9	43° 08.402' N	122° 47.208' W
Helibase	Days Creek Helibase	42° 58.646' N	123° 09.252' W
Helispot	Ash Valley Helispot	43° 03.367' N	123° 43.150' W
Helispot	H-101	42° 56.045' N	123° 02.395' W
Helispot	H-107	42° 57.195' N	122° 48.513' W
Helispot	H-108	42° 57.750' N	122° 44.087' W
Helispot	H-111	42° 58.875' N	122° 52.085' W
Helispot	H-116	43° 07.287' N	122° 54.358' W
Helispot	H-119	43° 08.735' N	122° 46.373' W
Helispot	H-122	43° 03.303' N	122° 41.432' W
Helispot	H-131	42° 55.195' N	122° 51.098' W
Helispot	H-132	42° 53.532' N	122° 50.205' W
Helispot	H-133	42° 54.143' N	122° 52.017' W
Helispot	H-134	42° 54.185' N	122° 53.048' W
Helispot	H-144	42° 54.938' N	122° 42.448' W
Helispot	Tiller Helispot	42° 55.837' N	122° 57.063' W
Lookout	Acker Rock Fire Tower	43° 03.108' N	122° 38.740' W



Utility Power Lines	R - Completed Road as Line
Aerial Hazard	Aerial Hazard
Dip Site	Foam Drop
Helispot	Retardant Drop
) (Division Break	Temporary Flight Restriction
] [Branch Break	Fire Edge
I Zone Break	Contained Line
Incident Command Post	TECPS Aerial Retardant Avoidance
Drop Point	Fire Retardant Avoidance Area
Lookout	Experimental Forest Watershed
Water Dev or Draft Site	Private Timber Companies
Water Source	IR 9/14/21 @ 2220
Restricted Water Source	IR Isolated Heat Source
Completed Burnout	Possible IR Heat Source
Completed Dozer Line	IR Heat Perimeter
Completed Fuel Break	IR Intense Heat
Completed Hand Line	IR Scattered Heat
Completed Mixed Const Line	Wildfire Daily Fire Perimeter



Pilot
 Devils Knob Complex
 65,766 Acres
 September 15, 2021



RMIMT Type 1
 9/15/2021 0634
 North American 1983 Datum

