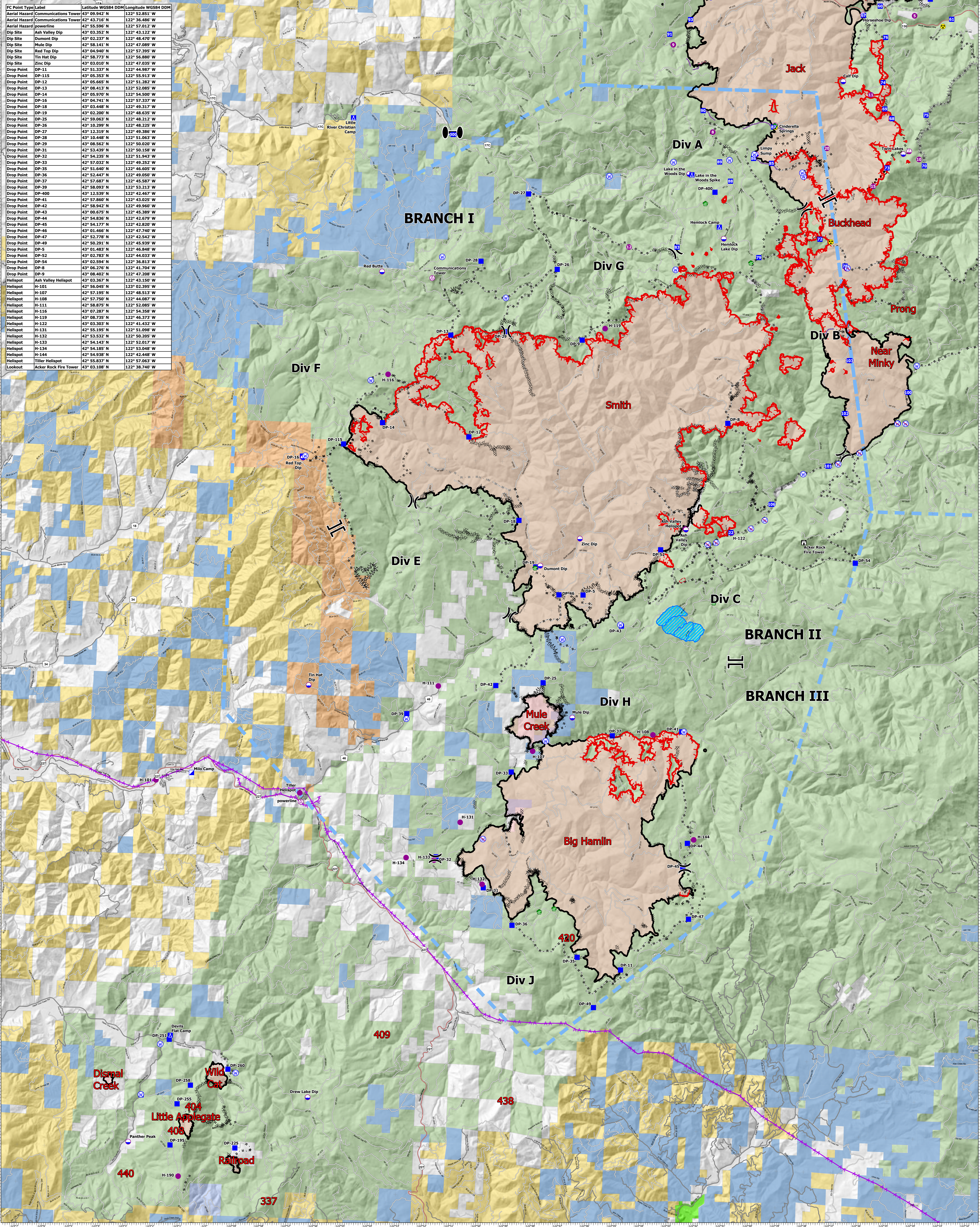


FC Point Type	Label	Latitude WGS84 DDM	Longitude WGS84 DDM
Aerial Hazard	Communications Tower	43° 09.942' N	122° 52.851' W
Aerial Hazard	powerline	42° 55.596' N	122° 57.012' W
Dip Site	Ash Valley Dip	43° 03.352' N	122° 48.322' W
Dip Site	Dumont Dip	43° 02.237' N	122° 48.470' W
Dip Site	Mule Dip	42° 58.141' N	122° 47.089' W
Dip Site	Red Top Dip	43° 04.940' N	122° 57.395' W
Dip Site	Tin Hat Dip	42° 58.773' N	122° 56.880' W
Dip Site	Zinc Dip	43° 03.010' N	122° 47.035' W
Drop Point	DP-11	42° 51.337' N	122° 44.987' W
Drop Point	DP-11.5	42° 51.352' N	122° 45.913' W
Drop Point	DP-12	43° 05.665' N	122° 51.282' W
Drop Point	DP-13	43° 08.413' N	122° 52.085' W
Drop Point	DP-14	43° 05.970' N	122° 54.500' W
Drop Point	DP-16	43° 04.741' N	122° 57.337' W
Drop Point	DP-18	43° 03.448' N	122° 49.317' W
Drop Point	DP-19	43° 02.200' N	122° 48.633' W
Drop Point	DP-25	42° 59.063' N	122° 48.212' W
Drop Point	DP-26	43° 10.299' N	122° 48.225' W
Drop Point	DP-27	43° 12.319' N	122° 49.386' W
Drop Point	DP-28	43° 10.448' N	122° 51.063' W
Drop Point	DP-29	43° 08.562' N	122° 50.020' W
Drop Point	DP-31	42° 53.439' N	122° 50.158' W
Drop Point	DP-32	42° 54.235' N	122° 51.943' W
Drop Point	DP-33	42° 57.032' N	122° 49.252' W
Drop Point	DP-35	42° 51.640' N	122° 46.605' W
Drop Point	DP-36	42° 52.447' N	122° 49.050' W
Drop Point	DP-37	42° 57.687' N	122° 45.587' W
Drop Point	DP-39	42° 58.092' N	122° 53.213' W
Drop Point	DP-400	43° 12.539' N	122° 42.467' W
Drop Point	DP-41	42° 57.860' N	122° 43.025' W
Drop Point	DP-42	42° 58.942' N	122° 49.960' W
Drop Point	DP-43	43° 00.675' N	122° 45.389' W
Drop Point	DP-44	42° 54.836' N	122° 42.679' W
Drop Point	DP-45	42° 54.177' N	122° 42.820' W
Drop Point	DP-46	43° 01.466' N	122° 47.740' W
Drop Point	DP-47	42° 52.778' N	122° 42.542' W
Drop Point	DP-49	42° 50.291' N	122° 45.939' W
Drop Point	DP-5	43° 01.483' N	122° 46.848' W
Drop Point	DP-52	43° 02.783' N	122° 44.033' W
Drop Point	DP-54	43° 02.594' N	122° 36.813' W
Drop Point	DP-8	43° 06.276' N	122° 41.704' W
Drop Point	DP-9	43° 08.402' N	122° 47.208' W
Helispot	Ash Valley Helispot	43° 03.367' N	122° 43.150' W
Helispot	H-101	42° 56.045' N	123° 02.395' W
Helispot	H-107	42° 57.195' N	122° 48.513' W
Helispot	H-108	42° 57.290' N	122° 48.087' W
Helispot	H-111	42° 58.876' N	122° 52.085' W
Helispot	H-116	43° 07.287' N	122° 54.358' W
Helispot	H-119	43° 08.735' N	122° 46.373' W
Helispot	H-122	43° 03.303' N	122° 41.432' W
Helispot	H-131	42° 55.195' N	122° 51.098' W
Helispot	H-132	42° 55.532' N	122° 50.205' W
Helispot	H-133	42° 54.143' N	122° 52.017' W
Helispot	H-134	42° 54.185' N	122° 53.048' W
Helispot	H-144	42° 54.938' N	122° 42.448' W
Helispot	Tiller Helispot	42° 55.837' N	122° 57.063' W
Lookout	Acker Rock Fire Tower	43° 03.108' N	122° 38.740' W



Air Operations
 Devils Knob Complex
 67,159 Acres
 September 17, 2021



RMIMT Type 1
 9/16/2021 2018
 North American 1983 Datum.

- Helispot
- Camp
- Completed Hand Line
- Fence
- Experimental Forest Watershed
- Secondary Highway
- Aerial Hazard
- Lookout
- Completed Mixed Construction Line
- Road Repair
- Private Timber Companies
- Dip Site
- Completed Road as Line
- Bureau of Land Management
- Water Source or Draft Site
- Planned Fuel Break
- U.S. Forest Service
- Water Source
- Planned Hand Line
- Bureau of Indian Affairs
- Restricted Water Source
- Planned Mixed Construction Line
- Other Federal
- Zone Break
- Planned Road as Line
- State
- Branch Break
- Completed Dozer Line
- Private/Unknown
- Incident Command Post
- Completed Fuel Break
- Drop Point
- Completed Burnout
- Completed Line
- Foam Drop
- Retardant Drop
- Temporary Flight Restriction
- Fire Edge