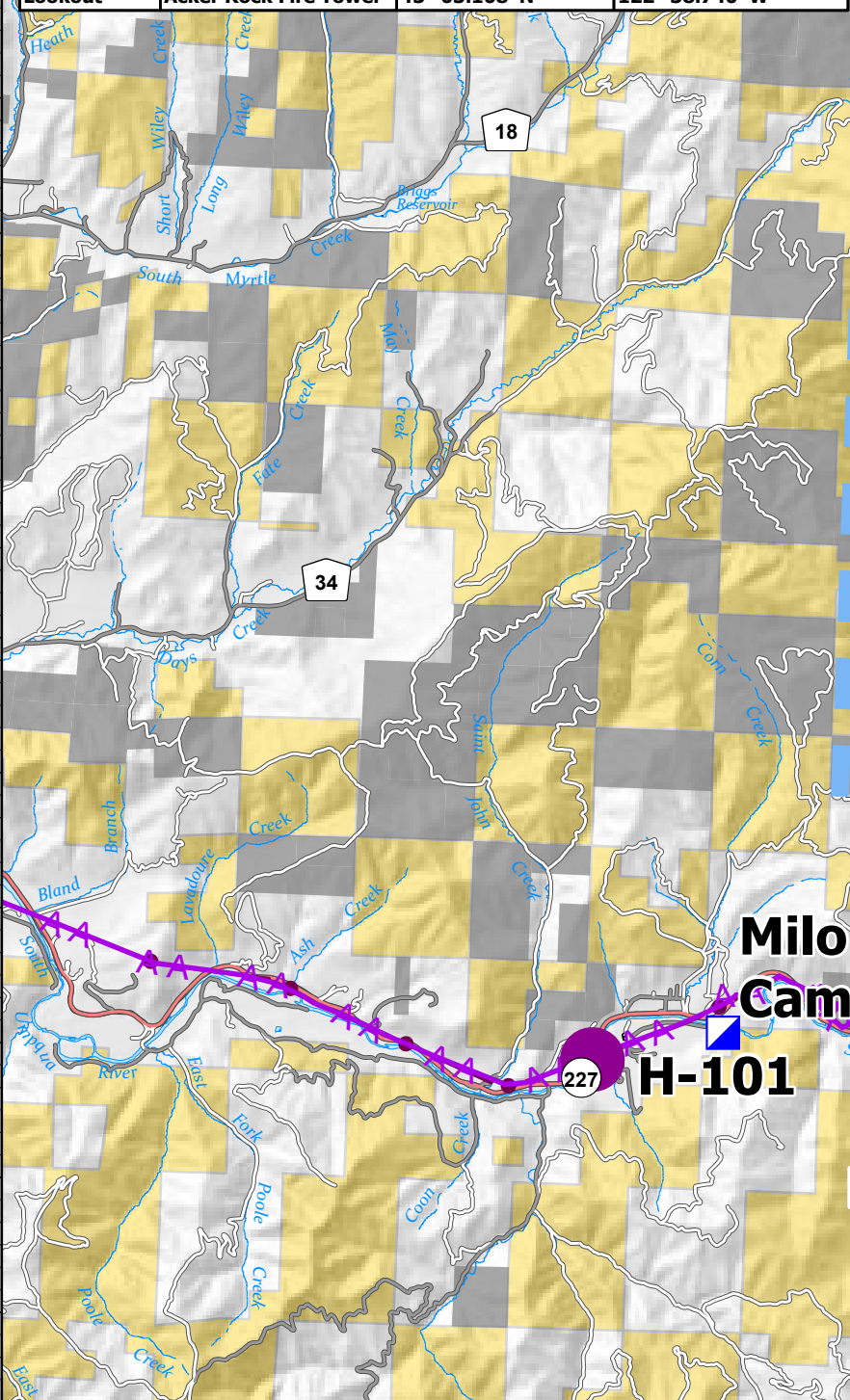
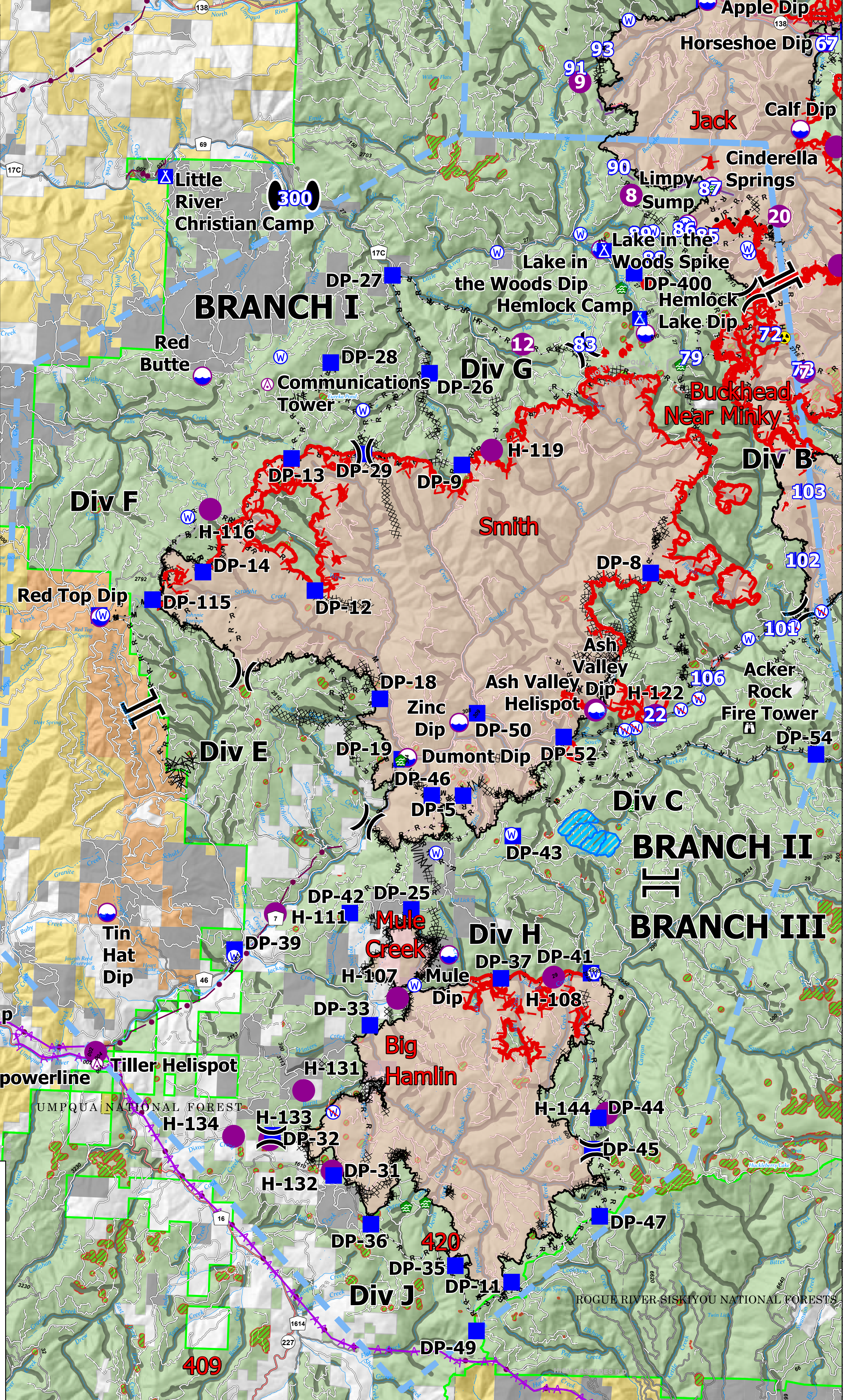


FC Point Type	Label	Latitude WGS84 DDM	Longitude WGS84 DDM
Aerial Hazard	Communications Tower	43° 09.942' N	122° 52.851' W
Aerial Hazard	Communications Tower	42° 43.716' N	122° 36.486' W
Aerial Hazard	powerline	42° 55.596' N	122° 57.012' W
Dip Site	Ash Valley Dip	43° 03.352' N	122° 43.122' W
Dip Site	Dumont Dip	43° 02.237' N	122° 48.470' W
Dip Site	Mule Dip	42° 58.141' N	122° 47.089' W
Dip Site	Red Top Dip	43° 04.940' N	122° 57.395' W
Dip Site	Tin Hat Dip	42° 58.773' N	122° 56.880' W
Dip Site	Zinc Dip	43° 03.010' N	122° 47.035' W
Drop Point	DP-11	42° 51.337' N	122° 44.987' W
Drop Point	DP-115	43° 05.353' N	122° 55.913' W
Drop Point	DP-12	43° 05.665' N	122° 51.282' W
Drop Point	DP-13	43° 08.413' N	122° 52.085' W
Drop Point	DP-14	43° 05.970' N	122° 54.500' W
Drop Point	DP-16	43° 04.741' N	122° 57.337' W
Drop Point	DP-18	43° 03.448' N	122° 49.317' W
Drop Point	DP-19	43° 02.200' N	122° 48.635' W
Drop Point	DP-25	42° 59.063' N	122° 48.212' W
Drop Point	DP-26	43° 10.299' N	122° 48.225' W
Drop Point	DP-27	43° 12.319' N	122° 49.386' W
Drop Point	DP-28	43° 10.448' N	122° 51.063' W
Drop Point	DP-29	43° 08.562' N	122° 50.020' W
Drop Point	DP-31	42° 53.439' N	122° 50.158' W
Drop Point	DP-32	42° 54.235' N	122° 51.943' W
Drop Point	DP-33	42° 57.032' N	122° 49.252' W
Drop Point	DP-35	42° 51.640' N	122° 46.605' W
Drop Point	DP-36	42° 52.447' N	122° 49.050' W
Drop Point	DP-37	42° 57.687' N	122° 45.587' W
Drop Point	DP-39	42° 58.093' N	122° 53.213' W
Drop Point	DP-400	43° 12.539' N	122° 42.467' W
Drop Point	DP-41	42° 57.860' N	122° 43.025' W
Drop Point	DP-42	42° 58.942' N	122° 49.960' W
Drop Point	DP-43	43° 00.675' N	122° 45.389' W
Drop Point	DP-44	42° 54.836' N	122° 42.679' W
Drop Point	DP-45	42° 54.177' N	122° 42.820' W
Drop Point	DP-46	43° 01.466' N	122° 47.740' W
Drop Point	DP-47	42° 52.778' N	122° 42.542' W
Drop Point	DP-49	42° 50.291' N	122° 45.939' W
Drop Point	DP-5	43° 01.483' N	122° 46.848' W
Drop Point	DP-50	43° 03.218' N	122° 46.527' W
Drop Point	DP-52	43° 02.783' N	122° 44.033' W
Drop Point	DP-54	43° 02.594' N	122° 36.813' W
Drop Point	DP-8	43° 06.276' N	122° 41.704' W
Drop Point	DP-9	43° 08.402' N	122° 47.208' W
Helispot	Ash Valley Helispot	43° 03.367' N	122° 43.150' W
Helispot	H-101	42° 56.045' N	123° 02.395' W
Helispot	H-107	42° 57.195' N	122° 48.513' W
Helispot	H-108	42° 57.750' N	122° 44.087' W
Helispot	H-111	42° 58.875' N	122° 52.085' W
Helispot	H-116	43° 07.287' N	122° 54.358' W
Helispot	H-119	43° 08.735' N	122° 46.373' W
Helispot	H-122	43° 03.303' N	122° 41.432' W
Helispot	H-131	42° 55.195' N	122° 51.098' W
Helispot	H-132	42° 53.532' N	122° 50.205' W
Helispot	H-133	42° 54.143' N	122° 52.017' W
Helispot	H-134	42° 54.185' N	122° 53.048' W
Helispot	H-144	42° 54.938' N	122° 42.448' W
Helispot	Tiller Helispot	42° 55.837' N	122° 57.063' W
Lookout	Acker Rock Fire Tower	43° 03.108' N	122° 38.740' W



Utility Power Lines	Completed Fuel Break
Aerial Hazard	H - Completed Hand Line
Dip Site	M - Completed Mixed Const Line
Helispot	R - Completed Road as Line
Division Break	Aerial Hazard
Branch Break	Foam Drop
Zone Break	Retardant Drop
Incident Command Post	Temporary Flight Restriction
Drop Point	Fire Edge
Lookout	Contained Line
Water Dev or Draft Site	TECPS Aerial Retardant Avoidance
Water Source	Fire Retardant Avoidance Area
Restricted Water Source	Experimental Forest Watershed
Completed Burnout	Private Timber Companies
Completed Dozer Line	Wildfire Daily Fire Perimeter



Pilot
 Devils Knob Complex
 67,710 Acres
 September 18, 2021



RMIMT Type 1
 9/17/2021 1724
 North American 1983 Datum

