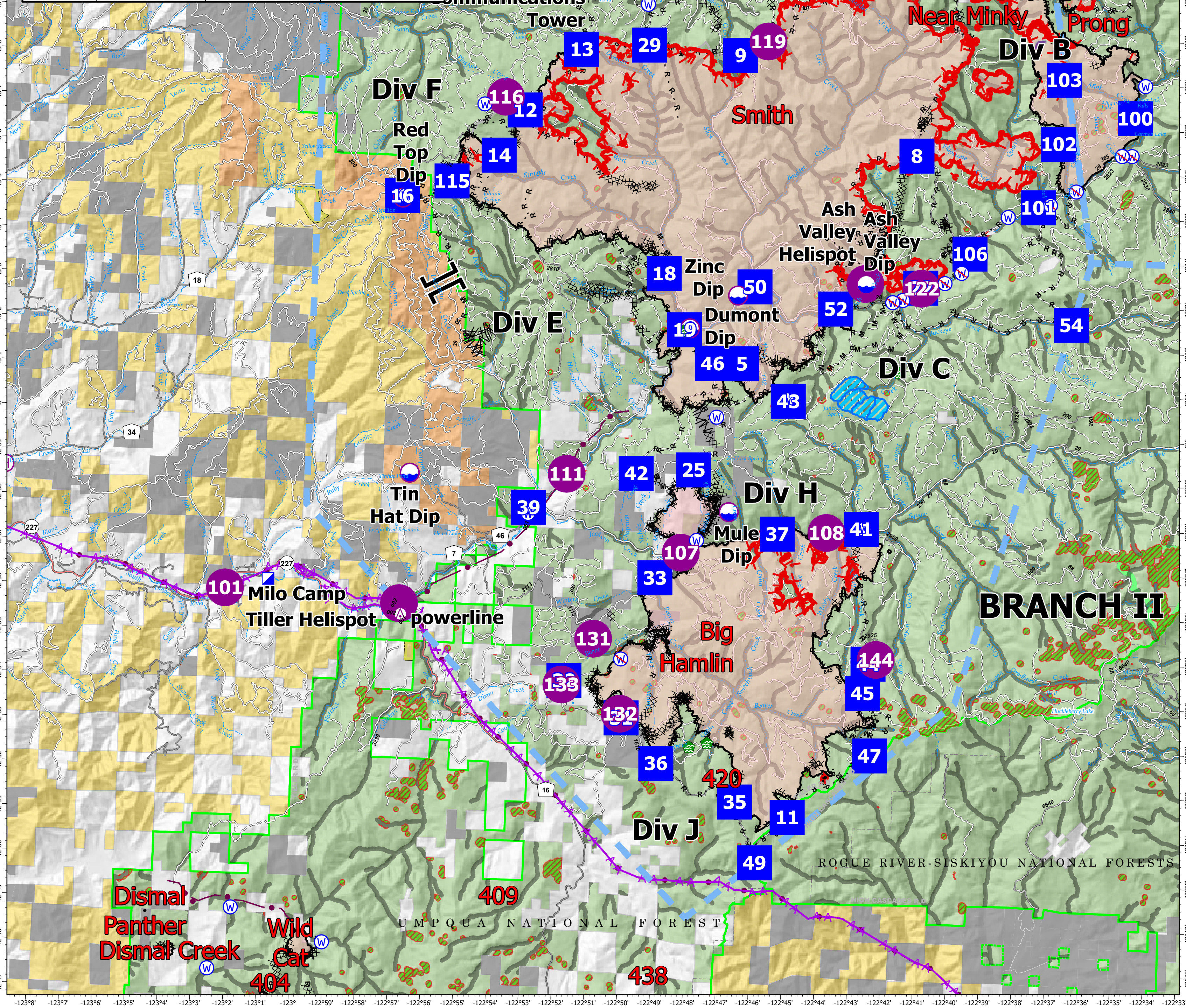


FC Point Type	Label	Latitude WGS84 DDM	Longitude WGS84 DDM
Aerial Hazard	Communications Tower	43° 09.942' N	122° 52.851' W
Aerial Hazard	powerline	42° 55.596' N	122° 57.012' W
Dip Site	Ash Valley Dip	43° 03.352' N	122° 43.122' W
Dip Site	Hemlock Lake Dip	43° 11.285' N	122° 42.083' W
Dip Site	Lake in the Woods Dip	43° 13.008' N	122° 43.446' W
Dip Site	Mule Dip	42° 58.141' N	122° 47.089' W
Dip Site	Red Top Dip	43° 04.940' N	122° 57.395' W
Dip Site	Tin Hat Dip	42° 58.773' N	122° 56.880' W
Dip Site	Zinc Dip	43° 03.010' N	122° 47.035' W
Dip Site	Dumont Dip	43° 02.237' N	122° 48.470' W
Drop Point	12	43° 07.006' N	122° 53.756' W
Helibase	Days Creek Helibase	42° 58.646' N	123° 09.252' W
Helispot	133	42° 54.143' N	122° 52.017' W
Helispot	116	43° 07.287' N	122° 54.358' W
Helispot	122	43° 03.303' N	122° 41.432' W
Helispot	101	42° 56.045' N	123° 02.395' W
Helispot	111	42° 58.875' N	122° 52.085' W
Helispot	132	42° 53.532' N	122° 50.205' W
Helispot	131	42° 55.195' N	122° 51.098' W
Helispot	12	43° 10.974' N	122° 45.590' W
Helispot	Tiller Helispot	42° 55.837' N	122° 57.063' W
Helispot	144	42° 54.938' N	122° 42.448' W
Helispot	108	42° 57.750' N	122° 44.087' W
Helispot	119	43° 08.735' N	122° 46.373' W
Helispot	107	42° 57.195' N	122° 48.513' W
Helispot	Ash Valley Helispot	43° 03.367' N	122° 43.150' W



Pilot
 Devils Knob Complex
 69,937 Acres
 September 22, 2021

0 2.5 5 Miles

- Utility Power Lines
 - Completed Burnout
 - Completed Dozer Line
 - Completed Fuel Break
 - Completed Hand Line
 - Completed Mixed Const Line
 - Completed Road as Line
 - Aerial Hazard
 - Foam Drop
 - Retardant Drop
 - Temporary Flight Restriction
 - Fire Edge
 - Contained Line
 - TECPs Aerial Retardant Avoidance
 - Fire Retardant Avoidance Area
 - Experimental Forest Watershed
 - Private Timber Companies
 - Wildfire Daily Fire Perimeter
 - Aerial Hazard
 - Dip Site
 - Helispot
 - Helibase
 - Sling Site
 - Branch Break
 - Zone Break
 - Incident Command Post
 - Drop Point
 - Camp
 - Water Dev or Draft Site
 - Hazard
 - Water Source
 - Restricted Water Source
- PNW2 Type 1
9/21/2021 2035
North American 1983 Datum