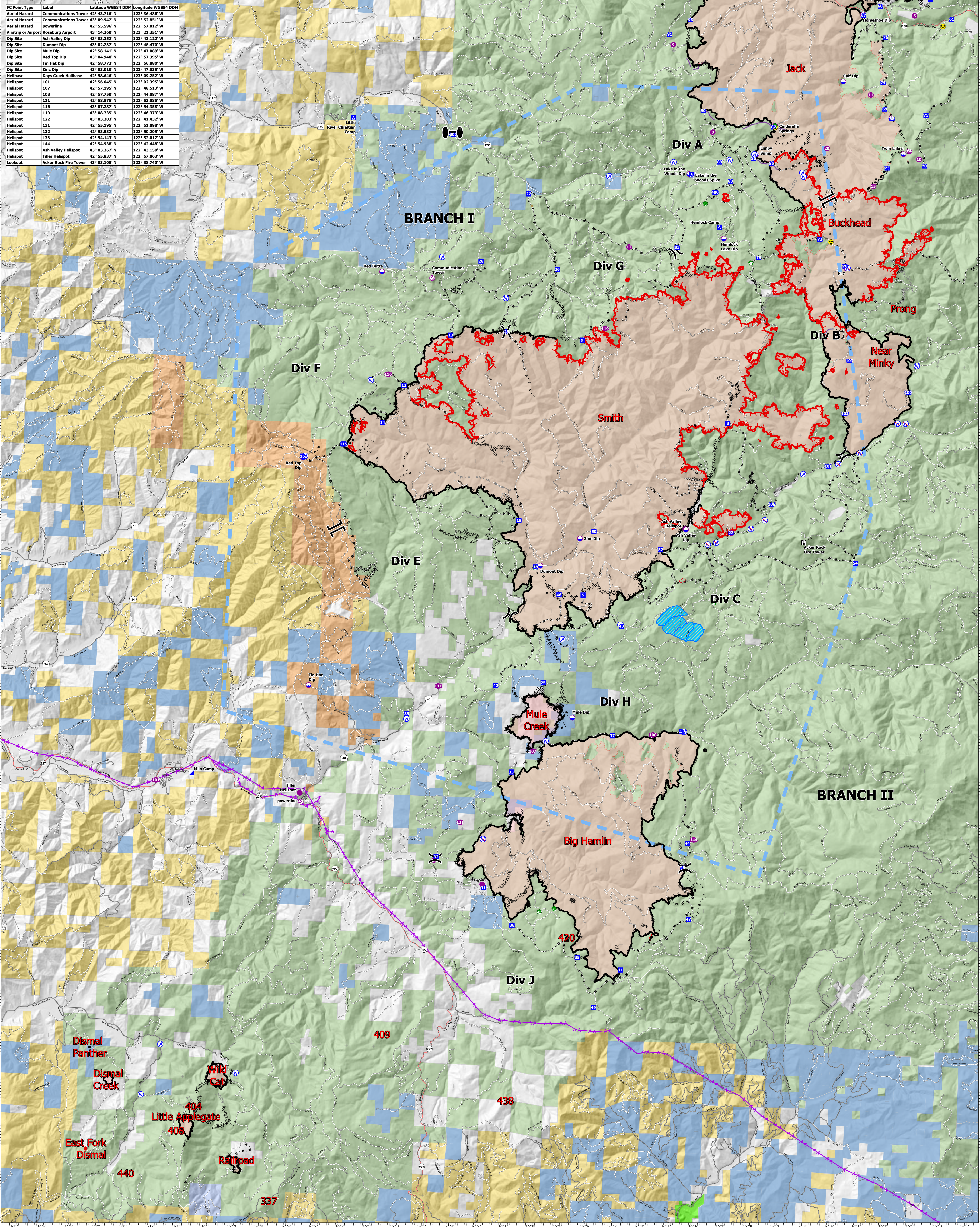


FC Point Type	Label	Latitude WGS84 DDM	Longitude WGS84 DDM
Aerial Hazard	Communications Tower	42° 43.716' N	122° 36.486' W
Aerial Hazard	powerline	42° 55.596' N	122° 57.012' W
Airstrip or Airport	Roseburg Airport	43° 14.360' N	122° 21.351' W
Dip Site	Ash Valley Dip	43° 03.352' N	122° 43.122' W
Dip Site	Dumont Dip	43° 02.237' N	122° 48.470' W
Dip Site	Mule Dip	42° 58.141' N	122° 47.089' W
Dip Site	Red Top Dip	43° 04.940' N	122° 57.395' W
Dip Site	Tin Hat Dip	42° 58.773' N	122° 56.880' W
Dip Site	Zinc Dip	43° 03.010' N	122° 47.035' W
Helibase	Days Creek Helibase	42° 58.640' N	122° 09.252' W
Helispot	101	42° 56.045' N	123° 02.395' W
Helispot	107	42° 57.195' N	122° 48.513' W
Helispot	108	42° 57.750' N	122° 44.087' W
Helispot	111	42° 58.875' N	122° 52.085' W
Helispot	116	43° 07.287' N	122° 54.358' W
Helispot	119	43° 08.732' N	122° 46.372' W
Helispot	122	43° 03.303' N	122° 41.432' W
Helispot	131	42° 55.195' N	122° 51.098' W
Helispot	132	42° 53.532' N	122° 50.205' W
Helispot	133	42° 54.143' N	122° 52.017' W
Helispot	144	42° 54.938' N	122° 43.448' W
Helispot	Ash Valley Helispot	43° 03.367' N	122° 43.150' W
Helispot	Tiller Helispot	42° 55.837' N	122° 57.063' W
Lookout	Acker Rock Fire Tower	43° 03.108' N	122° 38.740' W



Air Operations
 Devils Knob Complex
 69,994 Acres
 September 24, 2021



PNW2
 9/24/2021 0734
 North American 1983 Datum.

<ul style="list-style-type: none"> Helispot Aerial Hazard Dip Site Division Break Branch Break Zone Break Incident Command Post 	<ul style="list-style-type: none"> Drop Point Lookout Water Development or Draft Site Restricted Water Source Completed Burnout Completed Dozer Line 	<ul style="list-style-type: none"> Completed Fuel Break Completed Hand Line Completed Mixed Construction Line Completed Road as Line Planned Dozer Line Planned Hand Line Planned Mixed Construction Line 	<ul style="list-style-type: none"> Planned Road as Line Fence Road Repair Aerial Hazard Foam Drop Retardant Drop Temporary Flight Restriction 	<ul style="list-style-type: none"> Fire Edge Contained Line Experimental Forest Watershed Private Timber Companies Bureau of Land Management U.S. Forest Service Bureau of Indian Affairs 	<ul style="list-style-type: none"> Other Federal State Private/Unknown Secondary Highway Paved Roads Dirt (Not Paved)
---	--	---	---	---	---