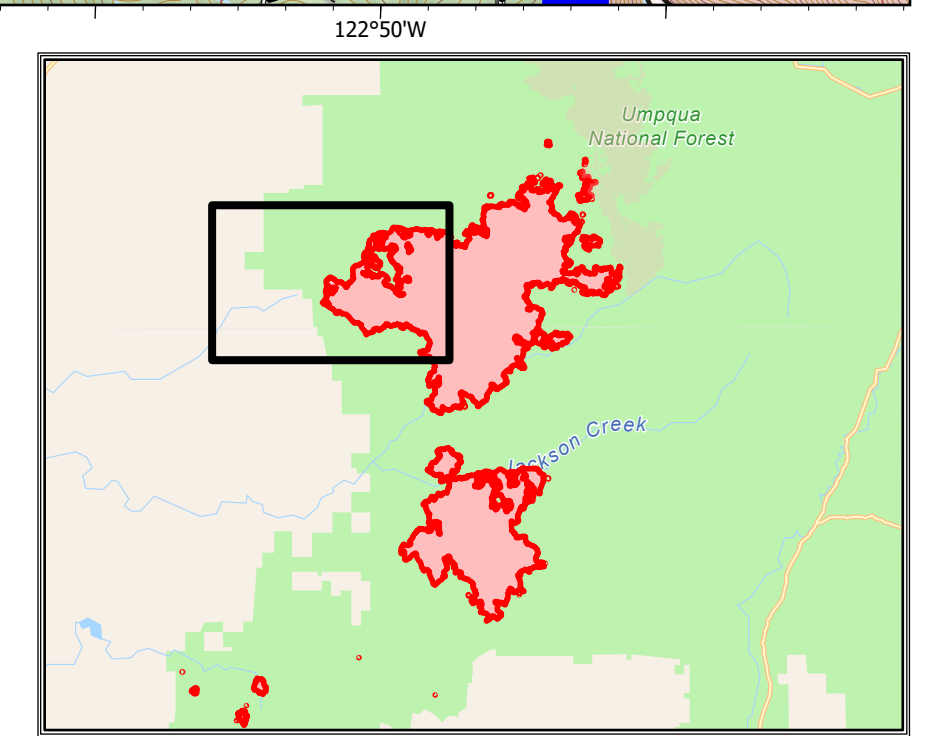


**OPS - Div F**  
 Devils Knob Complex  
 OR-UPF-000450  
 September 27, 2021  
 70,109 acres on 09/25/2021 2043

- |   |   |   |  |   |   |
|---|---|---|--|---|---|
| <ul style="list-style-type: none"> <li>County Boundary</li> <li>Structures</li> <li>Dip Site</li> <li>Helispot</li> <li>Division Break</li> <li>Branch Break</li> <li>Drop Point</li> <li>Closure/Check Point</li> <li>Staging Area</li> <li>Lookout</li> </ul> | <ul style="list-style-type: none"> <li>Hot Spot - Spot Fire</li> <li>Mobile Weather Unit</li> <li>Internet Access</li> <li>Water Source</li> <li>Other Property</li> <li>Pump</li> <li>Water Tank</li> <li>Completed Burnout</li> <li>Completed Dozer Line</li> <li>Completed Fuel Break</li> </ul> | <ul style="list-style-type: none"> <li>Completed Hand Line</li> <li>Completed Mixed Construction Line</li> <li>Completed Road as Line</li> <li>Planned Hand Line</li> <li>Planned Mixed Construction Line</li> <li>Planned Road as Line</li> <li>Access or Improved Road</li> <li>Other</li> <li>Temporary Flight Restriction</li> <li>Fire Edge</li> </ul> | <ul style="list-style-type: none"> <li>Contained Line</li> <li>Arterial Roads</li> <li>Open FS Roads</li> <li>Closed FS Roads</li> <li>Paved Roads</li> <li>Dirt (Not Paved)</li> <li>Gravel Road</li> <li>Dirt Roads</li> <li>Unimproved Roads</li> <li>Closed Roads</li> </ul> | <ul style="list-style-type: none"> <li>Trail</li> <li>Decommissioned FS Roads</li> <li>BLM Roads</li> <li>Trails</li> <li>Lake / Pond</li> <li>Lake / Pond (Intermittent)</li> <li>TNM Derived Names</li> <li>Township/Range</li> <li>Section</li> <li>Devils Knob Complex</li> </ul> | <ul style="list-style-type: none"> <li>Fire History</li> <li>Private Timber Companies</li> <li>Bureau of Land Management</li> <li>U.S. Forest Service</li> <li>Bureau of Indian Affairs</li> <li>Private/Unknown</li> </ul> |
|---|---|---|--|---|---|



9/26/2021 2102  
 Acres from IR and GPS  
 North American 1983 Datum.  
 Lat/Long Grid



0 1 2 3 4 Miles