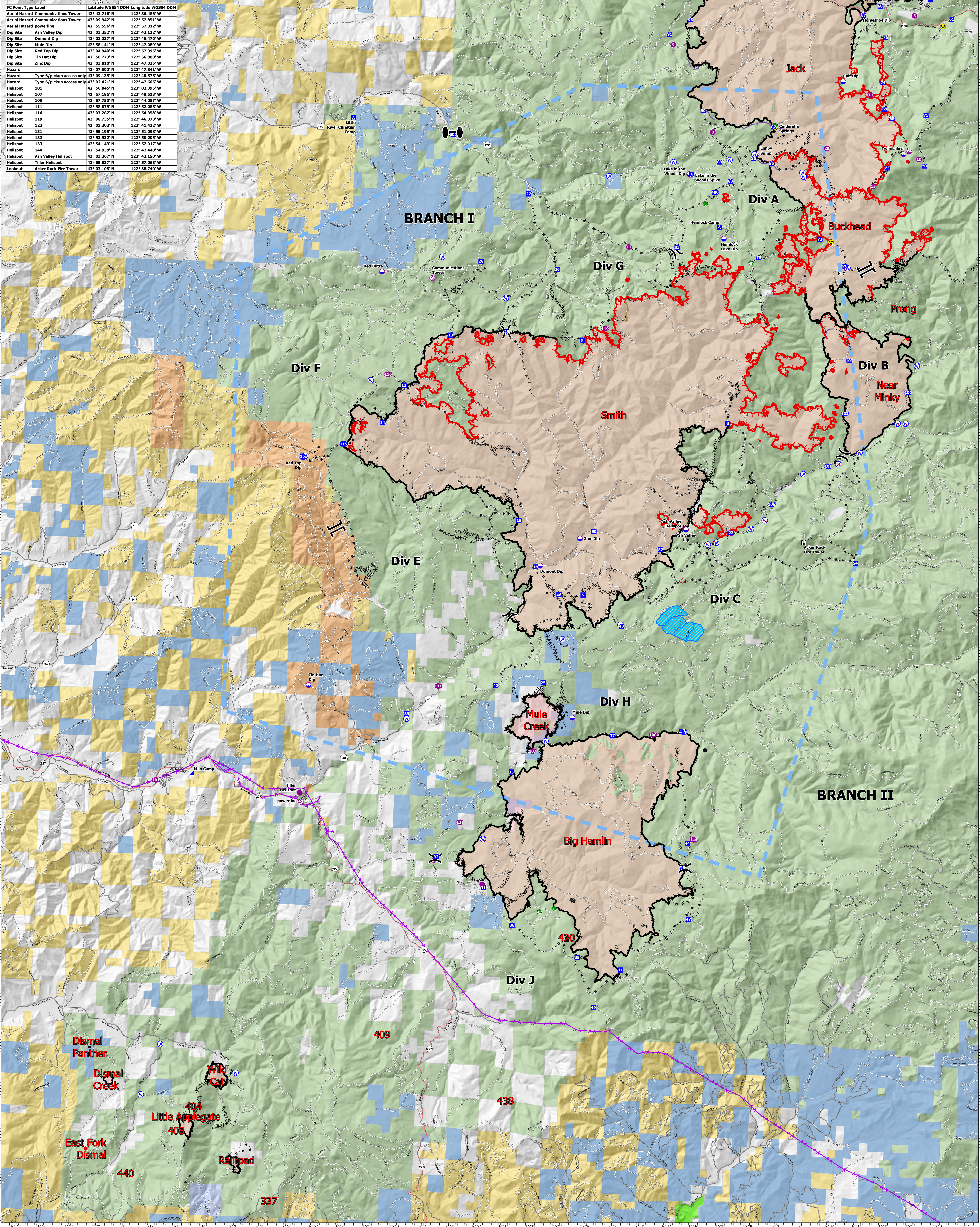


FC Point Type	Label	Latitude WGS84 DDM	Longitude WGS84 DDM
Aerial Hazard	Communications Tower	42° 43.716' N	122° 36.486' W
Aerial Hazard	powerline	42° 55.596' N	122° 57.012' W
Dip Site	Ash Valley Dip	43° 03.352' N	122° 43.122' W
Dip Site	Dumont Dip	43° 02.227' N	122° 48.470' W
Dip Site	Mule Dip	42° 58.141' N	122° 47.089' W
Dip Site	Red Top Dip	43° 04.940' N	122° 57.395' W
Dip Site	Tin Hat Dip	42° 58.773' N	122° 56.880' W
Dip Site	Zinc Dip	43° 03.010' N	122° 47.035' W
Hazard	Type 6/pickup access only	43° 09.135' N	122° 40.575' W
Hazard	Type 6/pickup access only	43° 02.421' N	122° 47.605' W
Hellspot	101	42° 56.045' N	123° 02.395' W
Hellspot	107	42° 57.195' N	122° 48.513' W
Hellspot	108	42° 57.750' N	122° 44.087' W
Hellspot	111	42° 58.875' N	122° 52.085' W
Hellspot	116	43° 07.387' N	122° 54.358' W
Hellspot	119	43° 08.735' N	122° 46.373' W
Hellspot	122	43° 03.303' N	122° 41.432' W
Hellspot	131	42° 55.195' N	122° 51.098' W
Hellspot	132	42° 53.532' N	122° 50.205' W
Hellspot	133	42° 54.143' N	122° 52.017' W
Hellspot	144	42° 54.938' N	122° 42.448' W
Hellspot	Ash Valley Hellspot	43° 03.367' N	122° 43.150' W
Hellspot	Tiller Hellspot	42° 55.837' N	122° 57.063' W
Lookout	Acker Rock Fire Tower	43° 03.108' N	122° 38.740' W



Air Operations
 Devils Knob Complex
 70,109 Acres
 September 29, 2021



PNW2
 9/28/2021 2025
 North American 1983 Datum.

- Hellspot
- Drop Point
- ⊠ Lookout
- Water Development or Draft Site
- Water Source
- Restricted Water Source
- ⊠ Completed Burnout
- ⊠ Completed Dozer Line
- ⊠ Aerial Hazard
- ⊠ Division Break
- ⊠ Branch Break
- ⊠ Zone Break
- ⊠ Incident Command Post
- ⊠ Completed Fuel Break
- ⊠ Completed Hand Line
- ⊠ Completed Mixed Construction Line
- ⊠ Completed Road as Line
- ⊠ Planned Dozer Line
- ⊠ Planned Hand Line
- ⊠ Planned Mixed Construction Line
- ⊠ Planned Road as Line
- ⊠ Fence
- ⊠ Road Repair
- ⊠ Aerial Hazard
- ⊠ Foam Drop
- ⊠ Retardant Drop
- ⊠ Temporary Flight Restriction
- ⊠ Fire Edge
- ⊠ Contained Line
- ⊠ Experimental Forest Watershed
- ⊠ Private Timber Companies
- ⊠ Bureau of Land Management
- ⊠ U.S. Forest Service
- ⊠ Bureau of Indian Affairs
- ⊠ Other Federal
- ⊠ State
- ⊠ Private/Unknown
- ⊠ Secondary Highway
- ⊠ Paved Roads
- ⊠ Dirt (Not Paved)