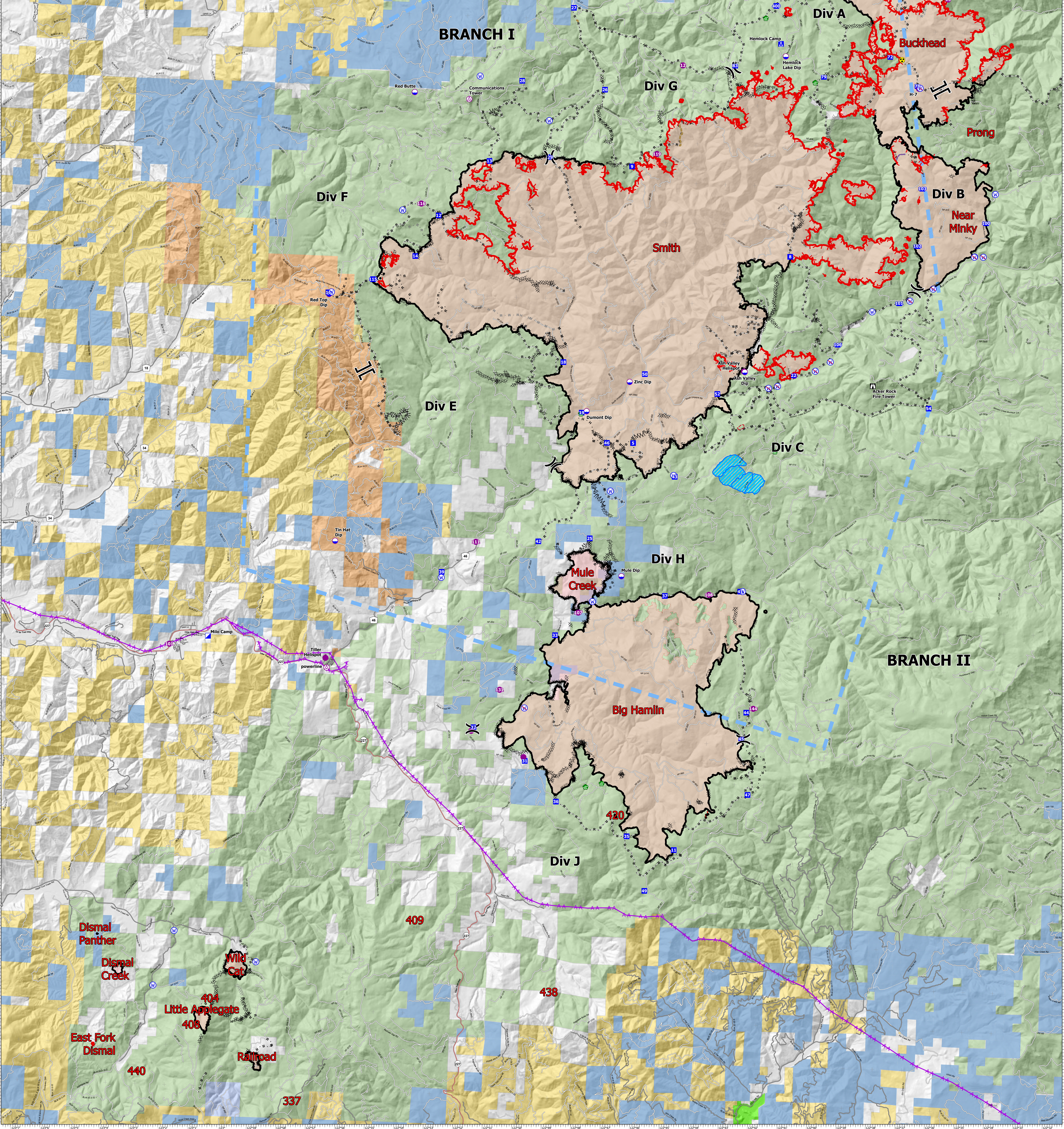


FC Point Type	Label	Latitude WGS84 DDM	Longitude WGS84 DDM
Aerial Hazard	Communications Tower	42° 43.716' N	122° 36.486' W
Aerial Hazard	Communications Tower	43° 09.942' N	122° 52.851' W
Aerial Hazard	powerline	42° 55.596' N	122° 57.012' W
Airstrip or Airport	Roseburg Airport	43° 14.369' N	123° 21.353' W
Dip Site	Ash Valley Dip	43° 03.252' N	122° 43.122' W
Dip Site	Dumont Dip	43° 02.237' N	122° 48.470' W
Dip Site	Mule Dip	42° 58.141' N	122° 47.089' W
Dip Site	Red Top Dip	43° 04.940' N	122° 57.395' W
Dip Site	Tin Hat Dip	42° 58.773' N	122° 56.880' W
Dip Site	Zinc Dip	43° 03.018' N	122° 47.035' W
Hazard		43° 07.602' N	122° 47.241' W
Hazard		43° 11.987' N	122° 49.228' W
Hazard	Type 6/pickup access only	43° 09.135' N	122° 40.575' W
Hazard	Type 6/pickup access only	43° 02.421' N	122° 47.605' W
Helispot	101	42° 56.045' N	123° 02.395' W
Helispot	107	42° 57.195' N	122° 48.513' W
Helispot	108	42° 57.750' N	122° 44.087' W
Helispot	111	42° 58.875' N	122° 52.085' W
Helispot	116	43° 07.287' N	122° 54.358' W
Helispot	119	43° 08.735' N	122° 46.373' W
Helispot	122	43° 03.303' N	122° 41.432' W
Helispot	131	42° 55.195' N	122° 51.098' W
Helispot	132	42° 53.532' N	122° 50.205' W
Helispot	133	42° 54.143' N	122° 52.017' W
Helispot	144	42° 54.938' N	122° 42.448' W
Helispot	Ash Valley Helispot	43° 03.367' N	122° 43.150' W
Helispot	Tiller Helispot	42° 55.837' N	122° 57.063' W
Lookout	Acker Rock Fire Tower	43° 03.108' N	122° 38.740' W



Air Operations
 Devils Knob Complex
 70,109 Acres
 September 30, 2021



N
 PNW2
 9/29/2021 2032
 North American 1983 Datum.
 0 0.5 1 2 3 4 Miles

- Helispot
- Drop Point
- Lookout
- Water Development or Draft Site
- Restricted Water Source
- Completed Burnout
- Completed Dozer Line
- Aerial Hazard
- Division Break
- Branch Break
- Zone Break
- Incident Command Post
- Completed Fuel Break
- Completed Hand Line
- Completed Mixed Construction Line
- Completed Road as Line
- Planned Dozer Line
- Planned Hand Line
- Planned Mixed Construction Line
- Planned Road as Line
- Fence
- Road Repair
- Aerial Hazard
- Foam Drop
- Retardant Drop
- Temporary Flight Restriction
- Fire Edge
- Contained Line
- Experimental Forest Watershed
- Private Timber Companies
- Bureau of Land Management
- U.S. Forest Service
- Bureau of Indian Affairs
- Other Federal
- State
- Private/Unknown
- Secondary Highway
- Paved Roads
- Dirt (Not Paved)