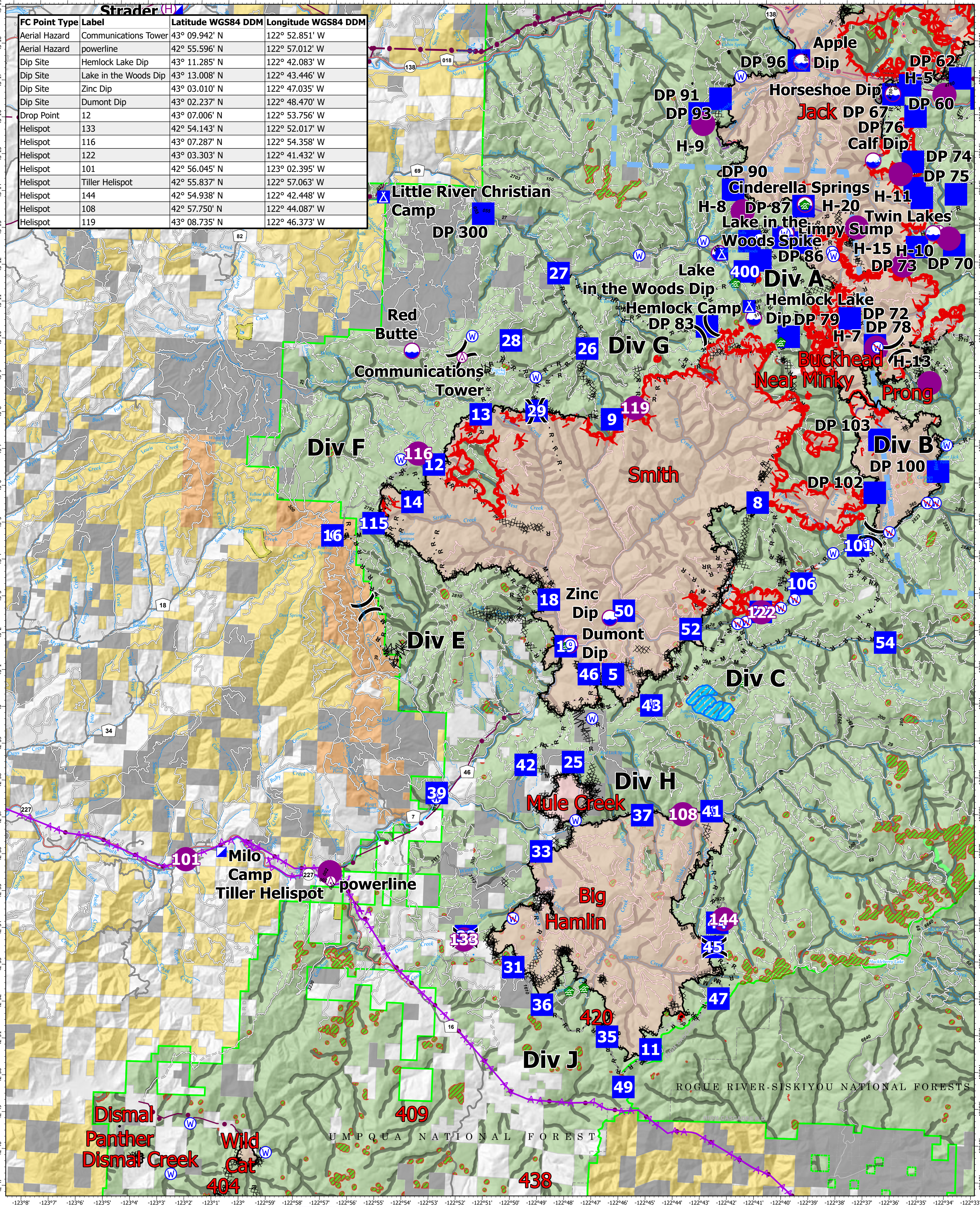
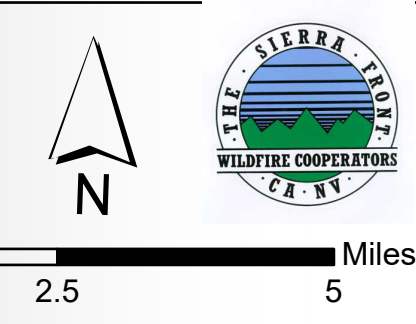


FC Point Type	Label	Latitude WGS84 DDM	Longitude WGS84 DDM
Aerial Hazard	Communications Tower	43° 09.942' N	122° 52.851' W
Aerial Hazard	powerline	42° 55.596' N	122° 57.012' W
Dip Site	Hemlock Lake Dip	43° 11.285' N	122° 42.083' W
Dip Site	Lake in the Woods Dip	43° 13.008' N	122° 43.446' W
Dip Site	Zinc Dip	43° 03.010' N	122° 47.035' W
Dip Site	Dumont Dip	43° 02.237' N	122° 48.470' W
Drop Point	12	43° 07.006' N	122° 53.756' W
Helispot	133	42° 54.143' N	122° 52.017' W
Helispot	116	43° 07.287' N	122° 54.358' W
Helispot	122	43° 03.303' N	122° 41.432' W
Helispot	101	42° 56.045' N	123° 02.395' W
Helispot	Tiller Helispot	42° 55.837' N	122° 57.063' W
Helispot	144	42° 54.938' N	122° 42.448' W
Helispot	108	42° 57.750' N	122° 44.087' W
Helispot	119	43° 08.735' N	122° 46.373' W



Pilot
 Devils Knob Complex
 70,110 Acres
 October 2, 2021



- Utility Power Lines
 - Completed Burnout
 - Completed Dozer Line
 - Completed Fuel Break
 - H - Completed Hand Line
 - M - Completed Mixed Const Line
- R - Completed Road as Line
 - Aerial Hazard
 - Foam Drop
 - Retardant Drop
 - Temporary Flight Restriction
 - Fire Edge
- Contained Line
 - TECPS Aerial Retardant Avoidance
 - Fire Retardant Avoidance Area
 - Experimental Forest Watershed
 - Private Timber Companies
 - Wildfire Daily Fire Perimeter
- ⊙ Aerial Hazard
 - ⊙ Dip Site
 - ⊙ Helispot
 - ⊙ Helibase
 - ⊙ Sling Site
 - ⊙ Division Break
 - ⊙ Incident Command Post
 - ⊙ Drop Point
 - ⊙ Camp
 - ⊙ Water Dev or Draft Site
 - ⊙ Water Source
 - ⊙ Restricted Water Source