

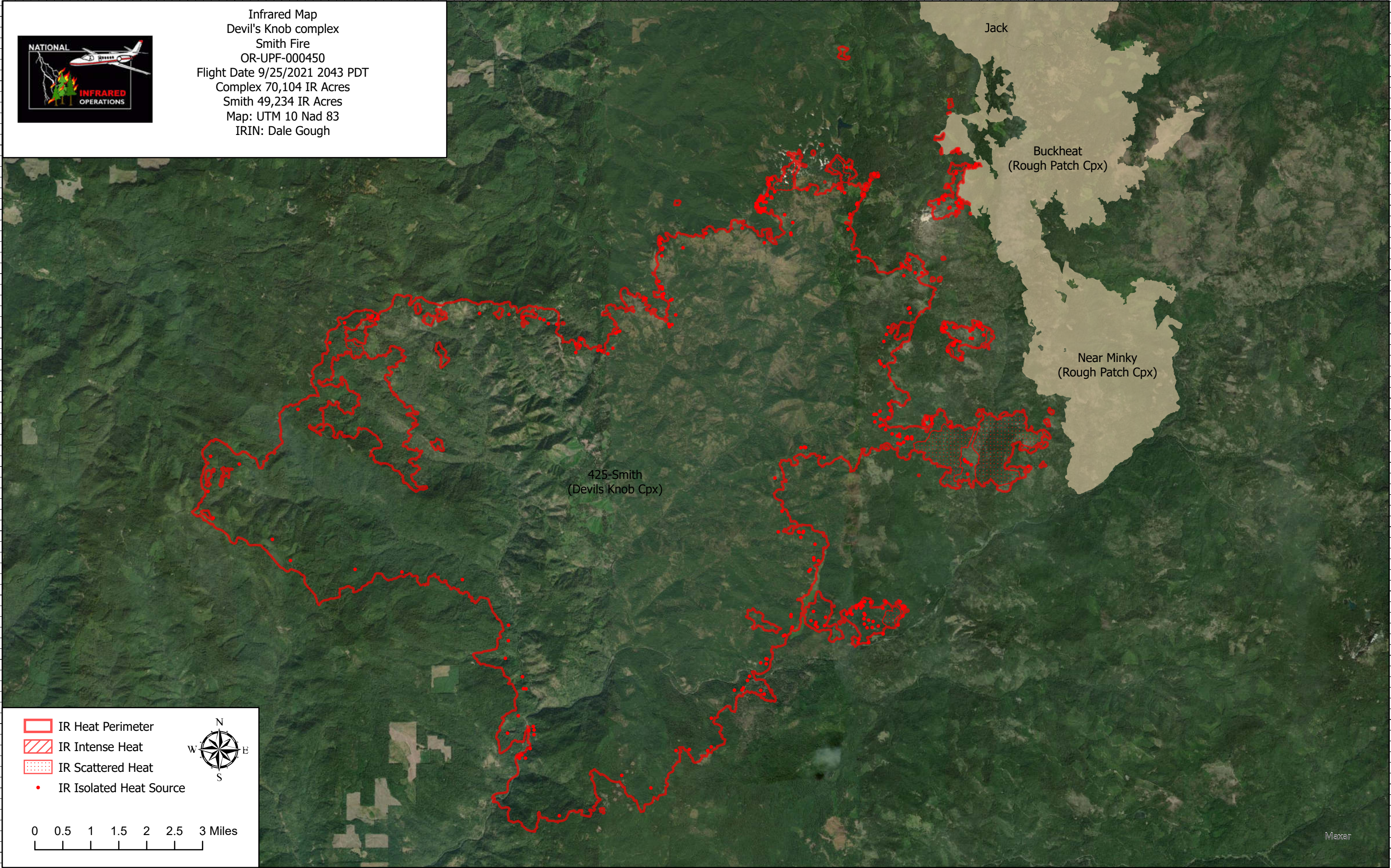
122°59'W 122°58'W 122°57'W 122°56'W 122°55'W 122°54'W 122°53'W 122°52'W 122°51'W 122°50'W 122°49'W 122°48'W 122°47'W 122°46'W 122°45'W 122°44'W 122°43'W 122°42'W 122°41'W 122°40'W 122°39'W 122°38'W 122°37'W 122°36'W 122°35'W 122°34'W 122°33'W 122°32'W 122°31'W





43°13'N  
43°12'N  
43°11'N  
43°10'N  
43°9'N  
43°8'N  
43°7'N  
43°6'N  
43°5'N  
43°4'N  
43°3'N  
43°2'N  
43°1'N  
43°N

43°13'N  
43°12'N  
43°11'N  
43°10'N  
43°9'N  
43°8'N  
43°7'N  
43°6'N  
43°5'N  
43°4'N  
43°3'N  
43°2'N  
43°1'N  
43°N



Infrared Map  
Devil's Knob complex  
Smith Fire  
OR-UPF-000450  
Flight Date 9/25/2021 2043 PDT  
Complex 70,104 IR Acres  
Smith 49,234 IR Acres  
Map: UTM 10 Nad 83  
IRIN: Dale Gough



-  IR Heat Perimeter
-  IR Intense Heat
-  IR Scattered Heat
-  IR Isolated Heat Source



0 0.5 1 1.5 2 2.5 3 Miles

Maxar

122°59'W 122°58'W 122°57'W 122°56'W 122°55'W 122°54'W 122°53'W 122°52'W 122°51'W 122°50'W 122°49'W 122°48'W 122°47'W 122°46'W 122°45'W 122°44'W 122°43'W 122°42'W 122°41'W 122°40'W 122°39'W 122°38'W 122°37'W 122°36'W 122°35'W 122°34'W 122°33'W 122°32'W 122°31'W