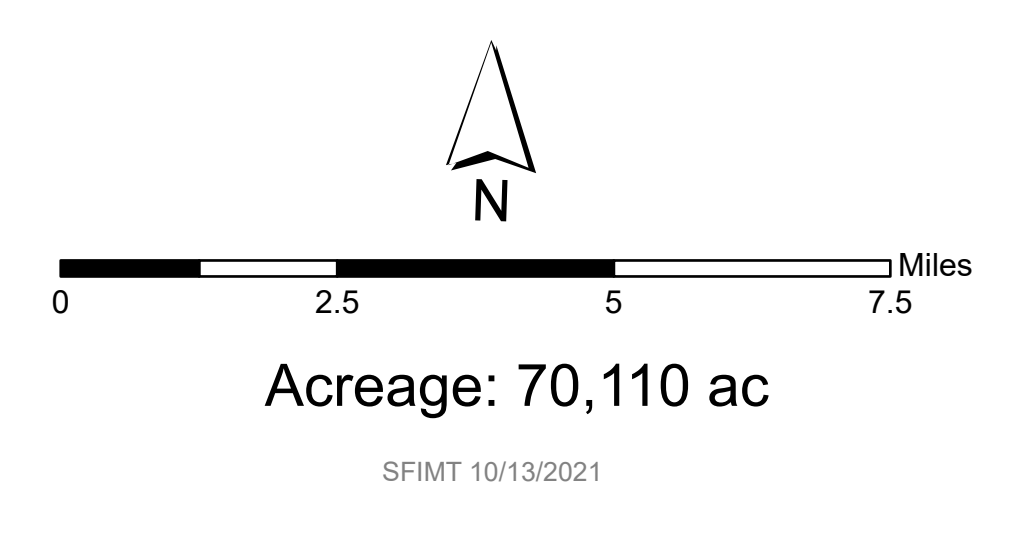


# Hunting Units / Forest Closure

## Umpqua National Forest

Effective October 8th, 2021  
Map Date: October 14, 2021



- |  |  |  |
|--|--|--|
| <ul style="list-style-type: none"> <li> Boating Site</li> <li> Camping Area</li> <li> Hotel/Lodge/Resort</li> <li> Interpretive Site</li> <li> Lookout/Cabin</li> <li> Observation Site</li> <li> Picnic/Day Use</li> <li> Trailhead</li> <li> Arterial Roads</li> <li> 2 - HIGH CLEARANCE VEHICLES</li> </ul> | <ul style="list-style-type: none"> <li> 3 - SUITABLE FOR PASSENGER CARS</li> <li> 4 - MODERATE DEGREE OF USER COMFORT</li> <li> 5 - HIGH DEGREE OF USER COMFORT</li> <li> Trail</li> <li> National Designated Trail</li> <li> Oregon Wildlife Mgmt Units</li> <li> Forest Closure Area</li> <li> Wildfire Daily Fire Perimeter</li> <li> Umpqua Administrative Forest</li> </ul> | <p><b>Ownership</b></p> <ul style="list-style-type: none"> <li> Bureau of Indian Affairs</li> <li> Bureau of Land Management</li> <li> U.S. Forest Service</li> <li> National Park Service</li> <li> Corps of Engineers</li> <li> State Land</li> <li> Other Land, Including Private</li> <li> Wilderness</li> </ul> |
|--|--|--|

