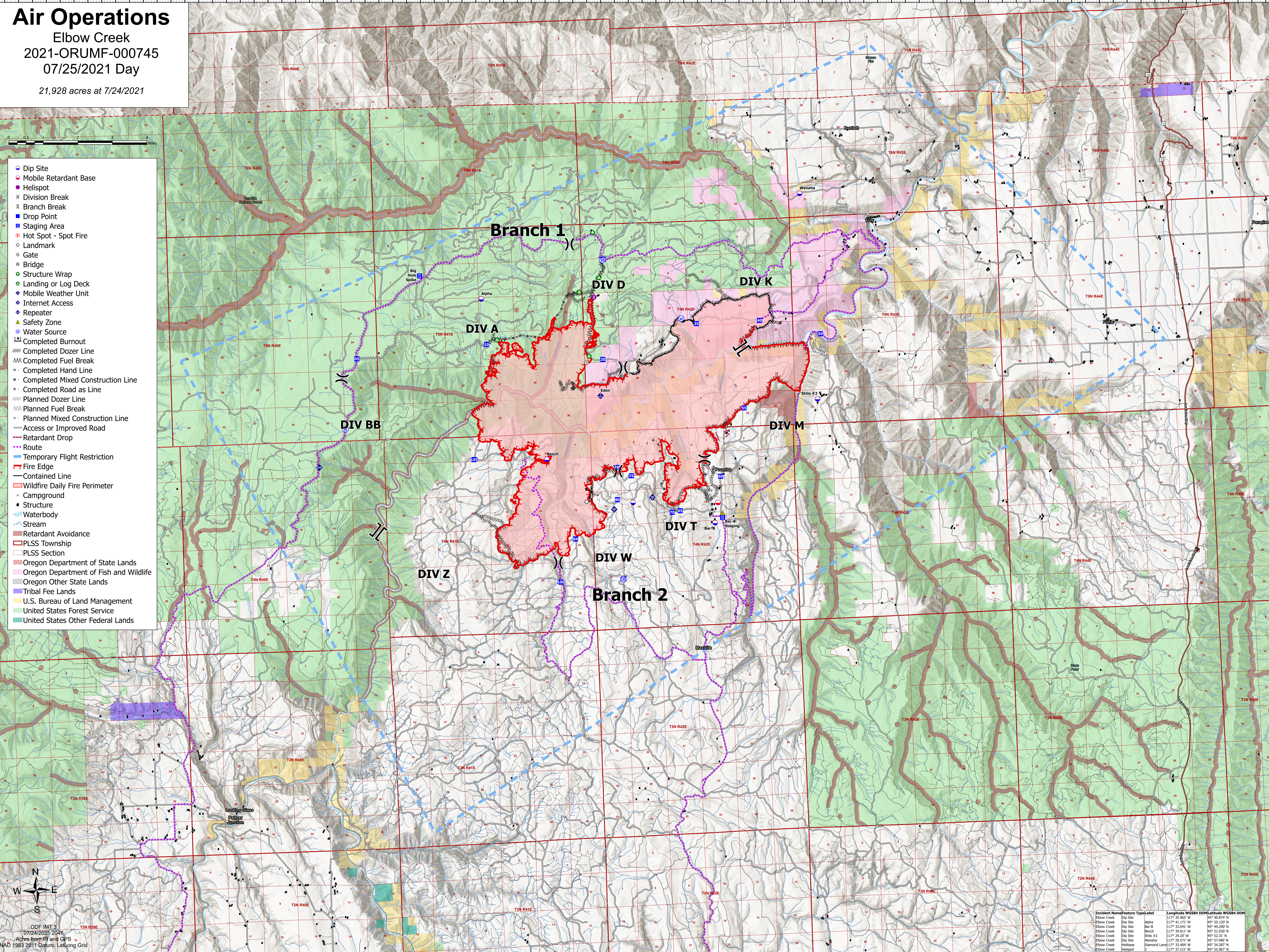


Air Operations

Elbow Creek
2021-ORUMF-000745
07/25/2021 Day
21,928 acres at 7/24/2021

- Dip Site
- Mobile Retardant Base
- Helispot
- Division Break
- Branch Break
- Drop Point
- Staging Area
- Hot Spot - Spot Fire
- Landmark
- Gate
- Bridge
- Structure Wrap
- Landing or Log Deck
- Mobile Weather Unit
- Internet Access
- Repeater
- Safety Zone
- Water Source
- Completed Burnout
- Completed Dozer Line
- Completed Fuel Break
- Completed Hand Line
- Completed Mixed Construction Line
- Completed Road as Line
- Planned Dozer Line
- Planned Fuel Break
- Planned Mixed Construction Line
- Access or Improved Road
- Retardant Drop
- Route
- Temporary Flight Restriction
- Fire Edge
- Contained Line
- Wildfire Daily Fire Perimeter
- Campground
- Structure
- Waterbody
- Stream
- Retardant Avoidance
- PLSS Township
- PLSS Section
- Oregon Department of State Lands
- Oregon Department of Fish and Wildlife
- Oregon Other State Lands
- Tribal Fee Lands
- U.S. Bureau of Land Management
- United States Forest Service
- United States Other Federal Lands



ODF IMT 3
07/24/2021 2047
Aches from IR and GPS
INAD 1983 2011 Datum, Lat/Long Grid

Incident Name	Feature	Type	Label	Longitude WGS84 DDM	Latitude WGS84 DDM
Elbow Creek	Dip Site		Alpha	117° 35.965' W	45° 49.874' N
Elbow Creek	Dip Site		Bar-B	117° 41.171' W	45° 53.120' N
Elbow Creek	Dip Site		Bar-B	117° 33.041' W	45° 49.200' N
Elbow Creek	Dip Site		Bench	117° 39.011' W	45° 51.030' N
Elbow Creek	Dip Site		Shilo #2	117° 29.507' W	45° 52.311' N
Elbow Creek	Dip Site		Wenaha	117° 29.571' W	45° 57.490' N
Elbow Creek	Helispot		Eden	117° 33.468' W	45° 54.207' N
Elbow Creek	Helispot		Eden	117° 37.121' W	45° 55.067' N