

Briefing

Elbow Creek
2021-ORUMF-000745
07/25/2021 Day
21,928 acres at 7/24/2021



- Dip Site
- Mobile Retardant Base
- Helispot
- Division Break
- Branch Break
- Drop Point
- Staging Area
- Hot Spot - Spot Fire
- Value at Risk
- Other
- Landmark
- Gate
- Structure Wrap
- Stream Crossing
- Landing or Log Deck
- Fence - Cut/Damaged
- Dozer Push
- Mobile Weather Unit
- Internet Access
- Repeater
- Safety Zone
- Water Source
- Completed Dozer Line
- Completed Fuel Break
- Completed Hand Line
- Completed Mixed Construction Line
- Completed Road as Line
- Access or Improved Road
- Travel Route
- Retardant Drop
- Wildfire Daily Fire Perimeter
- Structure
- All weather
- Dirt
- Not Drivable; Blocked
- Mainline Rd
- Hiking trail
- Waterbody
- Stream
- National Wild and Scenic River
- Oregon Scenic Waterway (MIST)
- PLSS Township
- PLSS Section
- Contour 200'
- Oregon Department of State Lands
- Oregon Department of Fish and Wildlife
- U.S. Bureau of Land Management
- United States Forest Service

Branch 1

DIV D

DIV K

DIV A

DIV BB

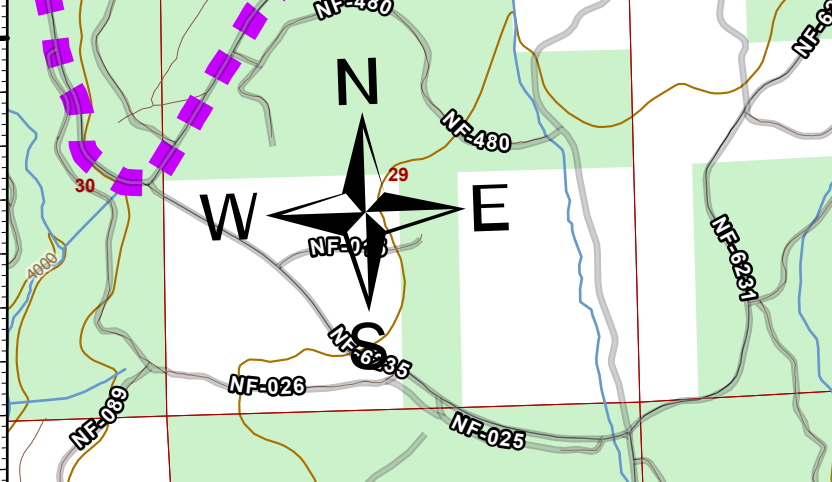
DIV M

DIV T

DIV W

DIV Z

Branch 2



ODF IMT 3
07/24/2021-2023
Acres from IR and GPS
NAD 1983 2011 Datum, LatLong Grid

Map: Oregon (GCS: NAD 1983) FIPS 5002, For Canada, For Mexico, Garmin SafeGraph, PROMETHEUS, METRO, U.S. Bureau of Land Management, NOAA, USGS, TERRACON, USA