

121 10.00 E'

121 00.00 E'

120 50.00 E'

120 40.00 E'

120 30.00 E'

# Air Operations

## Fox Complex ORFWF210422 08/17/21

Fox Cpx: 6,853 acres at 08/15/21 @ 20:23 hrs  
Patton Meadow: 6,029 acres  
Willow Valley: 824 acres

### ICS 220 Freqs

**Patton Meadow**  
A/A Primary / TFR 123.8750 AM  
A/A Secondary 121.2750 AM  
A/G 1 171.0250 FM  
A/G 2 169.4375 FM  
**Willow Valley (no TFR)**  
A/G 1 171.0250 FM  
A/G 2 169.4375 FM  
IA Zone Primary 134.7750 AM  
  
Local Flight Following 167.1750 FM  
TOLC 165.3625 FM  
DECK 168.3500 FM

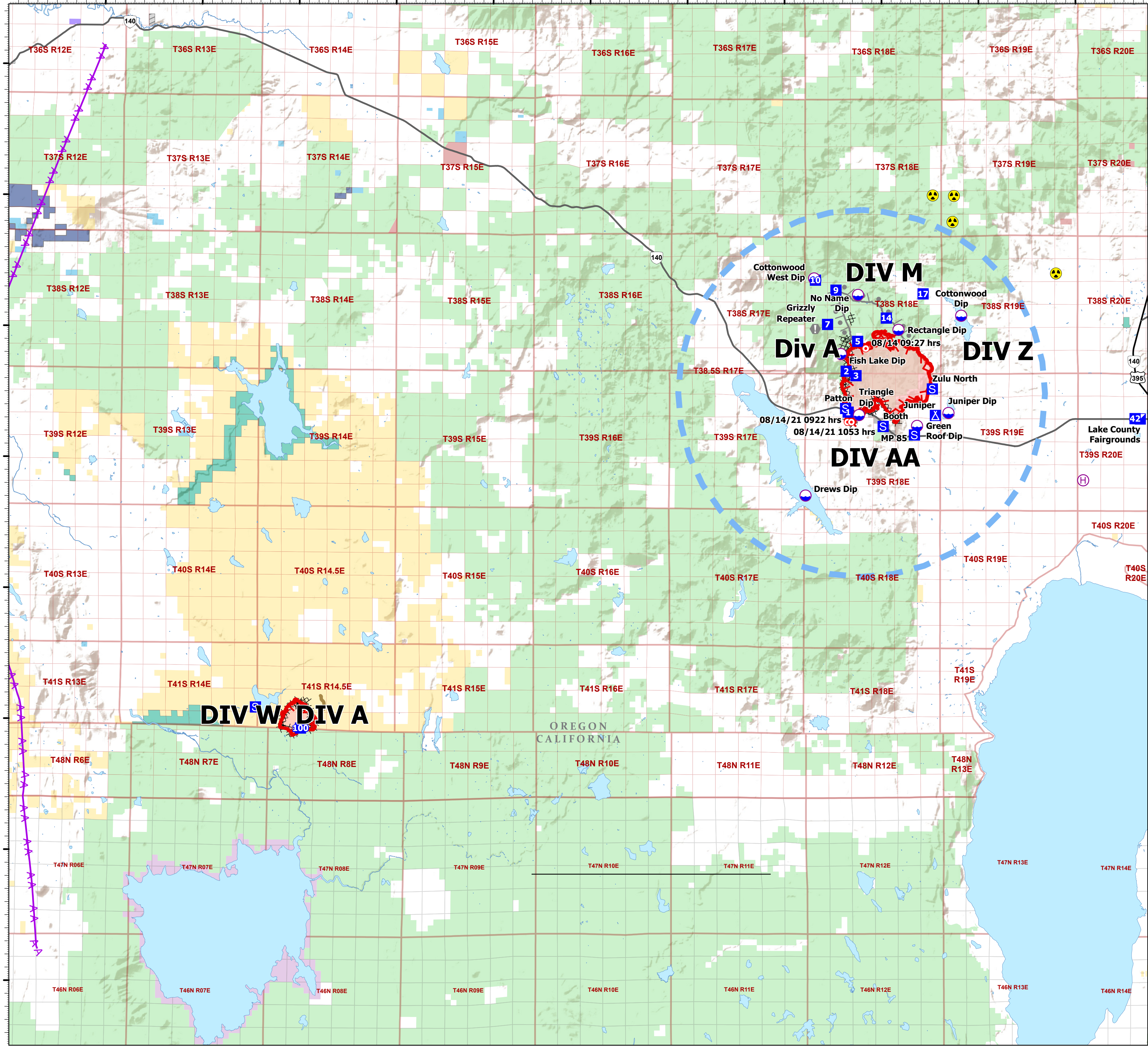
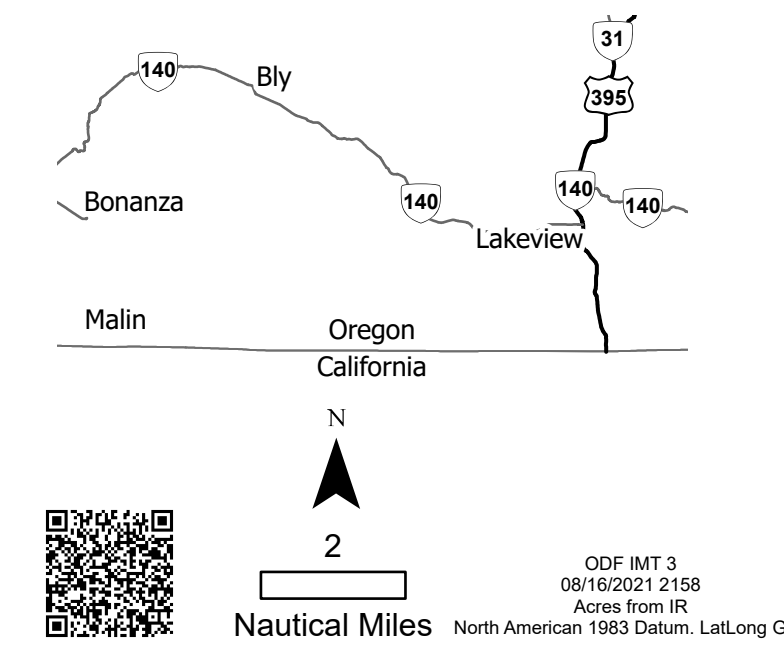
### Legend

- Dip Site
- Helibase
- Incident Command Post
- Drop Point
- Camp
- Staging Area
- Hot Spot - Spot Fire
- Value at Risk
- Hazard
- US Highway
- State Highway
- Highway
- Waterbody
- Oregon Department of Forestry (ODF)
- Oregon Land Board Lands Managed by ODF
- Oregon Department of State Lands
- Oregon Other State Lands
- Oregon Parks & Recreation Department
- Tribal Fee Lands
- Bureau of Land Management
- United States Forest Service
- Other Federal Lands

### Waypoints

Incident Name	FC Point Type	Label	Latitude	Longitude
Patton Meadow	Camp	Juniper	N42° 11.74300005' W120° 32.21200002'	
Patton Meadow	Dip Site	Drews Dip	N42° 08.67776339' W120° 38.87280494'	
Patton Meadow	Dip Site	Juniper Dip	N42° 11.83473776' W120° 31.53997605'	
Patton Meadow	Dip Site	Green Roof Dip	N42° 11.34247878' W120° 33.15289404'	
Patton Meadow	Dip Site	Triangle Dip	N42° 11.75362261' W120° 36.13259157'	
Patton Meadow	Dip Site	Cottonwood Dip	N42° 15.54855560' W120° 30.88836173'	
Patton Meadow	Dip Site	Fish Lake Dip	N42° 14.09432212' W120° 37.08745333'	
Patton Meadow	Dip Site	Rectangle Dip	N42° 15.00744284' W120° 34.11078165'	
Patton Meadow	Dip Site	Cottonwood West Dip	N42° 16.96565920' N42° 16.96565920'	
Patton Meadow	Dip Site	No Name Dip	N42° 16.33996796' W120° 36.19237654'	
Patton Meadow	Drop Point	1	N42° 11.86532648' W120° 36.69081265'	
Patton Meadow	Drop Point	3	N42° 13.25732662' W120° 36.29081273'	
Patton Meadow	Drop Point	5	N42° 14.56832672' W120° 36.20781301'	
Patton Meadow	Drop Point	7	N42° 15.21232666' W120° 37.75581333'	
Patton Meadow	Drop Point	9	N42° 16.52032678' W120° 37.32581350'	
Patton Meadow	Drop Point	10	N42° 16.90232674' W120° 38.38281369'	
Patton Meadow	Drop Point	42	N42° 11.73432781' W120° 21.71081017'	
Patton Meadow	Drop Point	17	N42° 16.38232718' W120° 32.84781273'	
Patton Meadow	Drop Point	2	N42° 13.42588606' W120° 36.79365099'	
Patton Meadow	Drop Point	14	N42° 15.45732690' W120° 34.73581290'	
Patton Meadow	Hazard		N42° 19.13032751' W120° 31.33281296'	
Patton Meadow	Hazard		N42° 20.12132759' W120° 31.25681311'	
Patton Meadow	Hazard		N42° 20.14132750' W120° 32.34781329'	
Patton Meadow	Hazard		N42° 17.16332782' W120° 26.01281173'	
Patton Meadow	Helibase		N42° 09.26469000' W120° 24.62734911'	
Patton Meadow	Hot Spot - Spot Fire	08/14/21 0922 hrs	N42° 11.48523200' W120° 36.72285896'	
Patton Meadow	Hot Spot - Spot Fire	08/14 09:27 hrs	N42° 14.29403549' W120° 35.79248979'	
Patton Meadow	Hot Spot - Spot Fire	08/14/21 1053 hrs	N42° 11.48557090' W120° 36.52464615'	
Patton Meadow	Incident Command Post	Lake County Fairgrounds	N42° 11.60222781' W120° 21.69285011'	
Patton Meadow	Staging Area	Booth	N42° 11.31935122' W120° 34.89284700'	
Patton Meadow	Staging Area	Zulu North	N42° 12.75232695' W120° 32.36881207'	
Patton Meadow	Staging Area	Patton	N42° 12.00494587' W120° 36.82209873'	
Patton Meadow	Staging Area	MP 85	N42° 10.99529752' W120° 33.28699190'	
Patton Meadow	Value at Risk	Grizzly Repeater	N42° 15.04172318' W120° 38.38995518'	
Willow Valley	Drop Point	100	N41° 59.71949999' W121° 04.69780001'	
Willow Valley	Staging Area		N42° 00.51179996' W121° 07.01229998'	

### Air Operations Vicinity



**DIV M**  
**Div A**  
**DIV Z**  
**DIV AA**  
**DIV W**  
**DIV A**

08/14/21 09:27 hrs  
08/14/21 0922 hrs  
08/14/21 1053 hrs