

120°40.00 E'

120°30.00 E'

120°20.00 E'

Air Operations

Fox Complex ORFWF210422 08/18/21

Fox Cpx: 7,229 acres at 08/16/21 @ 20:50 hrs
Patton Meadow: 6,405 acres
Willow Valley: 824 acres

ICS 220 Freqs

Patton Meadow
A/A Primary / TFR 123.8750 AM
A/A Secondary 121.2750 AM
A/G 1 171.0250 FM
A/G 2 169.4375 FM
Willow Valley (no TFR)
A/G 1 171.0250 FM
A/G 2 169.4375 FM
IA Zone Primary 134.7750 AM

Local Flight Following 167.1750 FM
TOLC 165.3625 FM
DECK 168.3500 FM

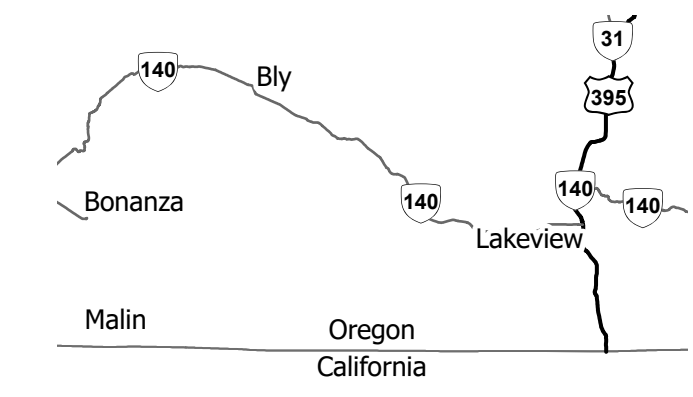
Legend

- Dip Site
- Hazard
- US Highway
- State Highway
- Helibase
- Highway
- Incident Command Post
- Waterbody
- Drop Point
- Oregon Department of State Lands
- Camp
- Oregon Parks and Recreation Department
- Staging Area
- Bureau of Land Management
- Hot Spot - Spot Fire
- United States Forest Service
- Value at Risk
- Other Federal Lands
- Repeater
- Local Government

Waypoints

FC Point Type	Label	Latitude	Longitude
Camp	Juniper	N42° 11.74300005' W120° 32.21200002'	
Dip Site	Drews Dip	N42° 08.6776339' W120° 38.87280494'	
Dip Site	Juniper Dip	N42° 11.83473776' W120° 31.53997605'	
Dip Site	Green Roof Dip	N42° 11.34247878' W120° 33.15289404'	
Dip Site	Triangle Dip	N42° 11.75362261' W120° 36.13259157'	
Dip Site	Cottonwood Dip	N42° 15.54855560' W120° 30.88836173'	
Dip Site	Fish Lake Dip	N42° 14.09432212' W120° 37.08745333'	
Dip Site	Rectangle Dip	N42° 15.00744284' W120° 34.11078165'	
Dip Site	Cottonwood West Dip	N42° 16.96656920' N42° 16.96656920'	
Dip Site	Muddy Creek Dip	N42° 14.01707084' W120° 34.69357719'	
Dip Site	No Name Dip	N42° 16.33996796' W120° 36.19237654'	
Drop Point	1	N42° 11.86532648' W120° 36.69081265'	
Drop Point	3	N42° 13.25732662' W120° 36.29081273'	
Drop Point	5	N42° 14.56832672' W120° 36.20781301'	
Drop Point	7	N42° 15.21232666' W120° 37.75581333'	
Drop Point	9	N42° 16.52032678' W120° 37.32581350'	
Drop Point	10	N42° 16.90232674' W120° 38.38281369'	
Drop Point	42	N42° 11.73432781' W120° 21.71081017'	
Drop Point	17	N42° 16.38232718' W120° 32.84781273'	
Drop Point	2	N42° 13.42588606' W120° 36.79365099'	
Drop Point	14	N42° 15.45732690' W120° 34.73581290'	
Hazard		N42° 19.13032751' W120° 31.33281296'	
Hazard		N42° 20.12132759' W120° 31.25681311'	
Hazard		N42° 20.14132750' W120° 32.34781329'	
Hazard		N42° 17.16332782' W120° 26.01281173'	
Helibase		N42° 09.26469000' W120° 24.62734911'	
Helibase		N42° 14.64301297' W120° 36.38571152'	
Hot Spot - Spot Fire	08/14/21 0922 hrs	N42° 11.48523200' W120° 36.72285896'	
Hot Spot - Spot Fire	08/14/21 09:27 hrs	N42° 14.29403549' W120° 35.79248979'	
Hot Spot - Spot Fire	08/14/21 1053 hrs	N42° 11.48557090' W120° 36.52464615'	
Incident Command Post	Lake County Fairgrounds	N42° 11.60222781' W120° 21.69285011'	
Repeater	CMD 1	N42° 12.27206031' W120° 19.80923506'	
Staging Area	Booth	N42° 11.31935122' W120° 34.89284700'	
Staging Area	Zulu North	N42° 12.75232695' W120° 32.36881207'	
Staging Area	Patton	N42° 12.00494587' W120° 36.82209873'	
Staging Area	MP 85	N42° 10.99529752' W120° 33.28699190'	
Value at Risk	Grizzly Repeater	N42° 15.04172318' W120° 38.38995518'	

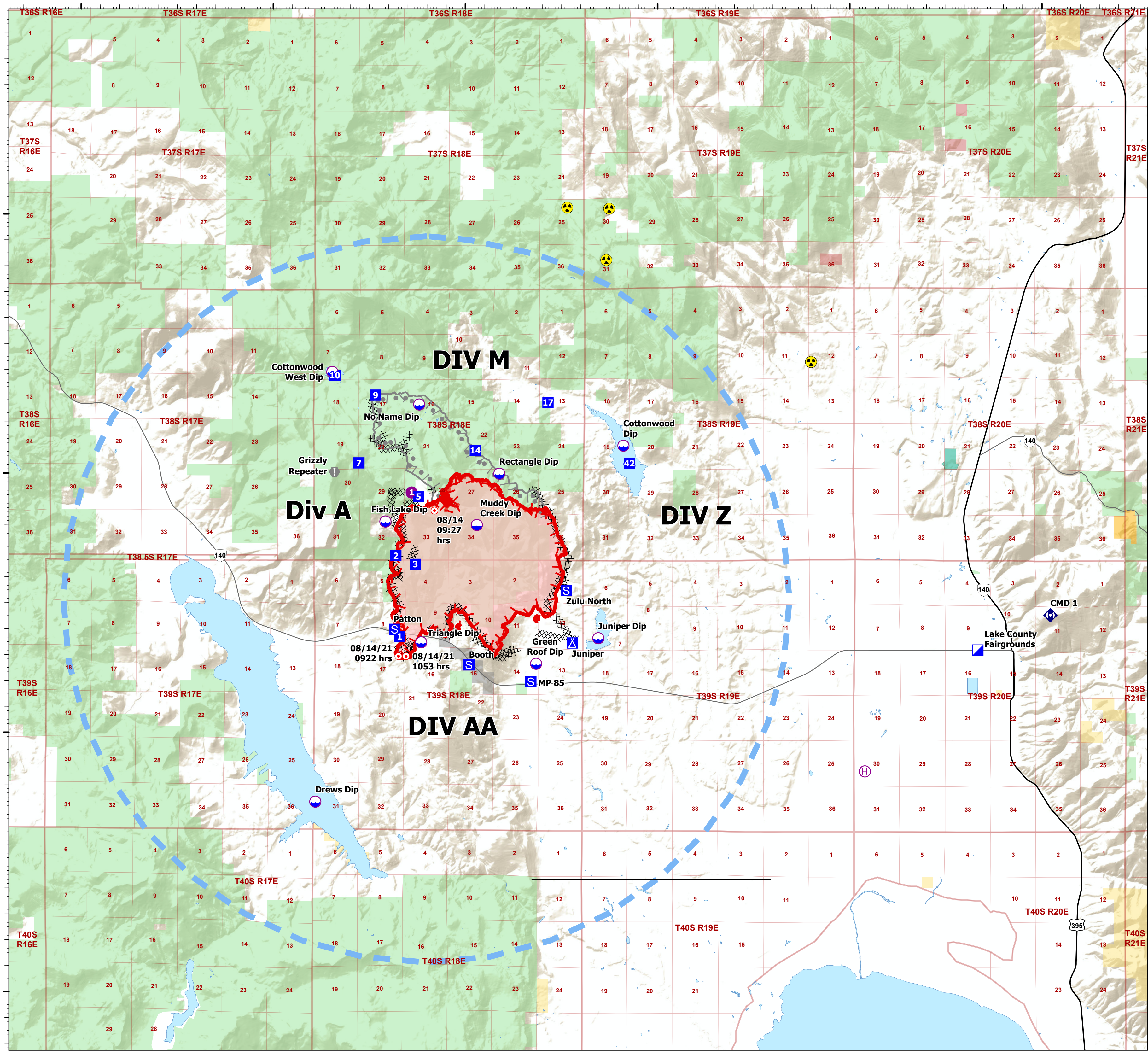
Air Operations Vicinity



North American 1983 Datum, Lat/Long Grid

1 Nautical Miles

ODF IMT 3
08/17/2021 2:12
Acres from IR



DIV M

Div A

DIV Z

DIV AA

08/14/21 09:22 hrs

08/14/21 09:27 hrs

08/14/21 1053 hrs

42°20.00 N'

42°10.00 N'

